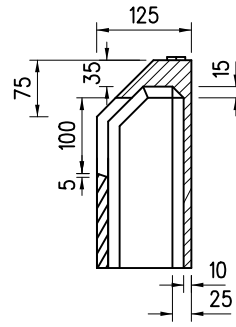
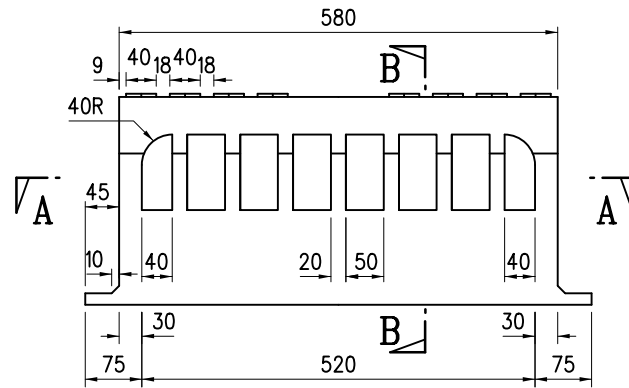


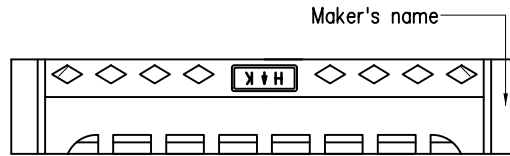
SIDE VIEW



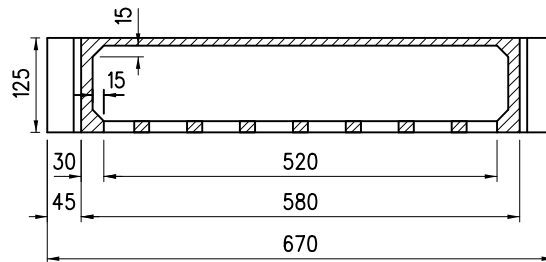
SECTION B-B



FRONT ELEVATION



PLAN



SECTION A-A

Notes :

1. Dimensions are in millimetres.
2. All corners are to be rounded to approximately 2 mm radius.
3. Material is to be cast iron grade EN-GJL-150 of BS EN 1561.

B	Note 3 Revised	Original signed	Nov 21
A	Width of inlet slots revised	-	Nov 11
	New issue	-	Jun 94
REF.	REVISION	SIGNATURE	DATE

KERB OVERFLOW WEIRS
TYPE K2-450V

HIGHWAYS DEPARTMENT

REFERENCE

DRAWING No.

CAD

SCALE

1 : 10

H 3126B