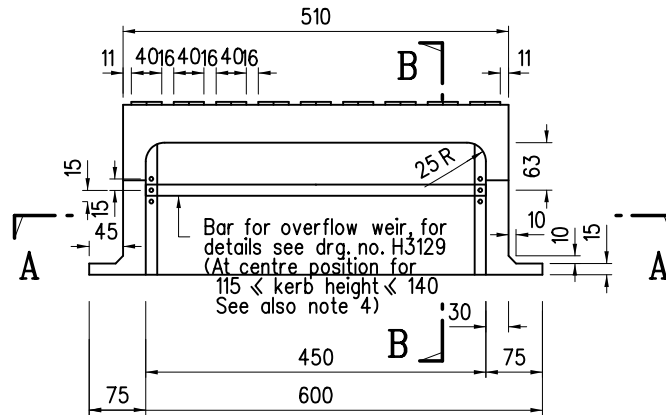
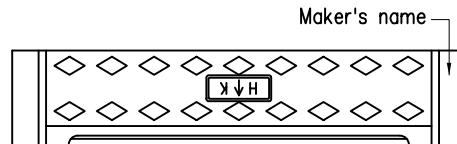


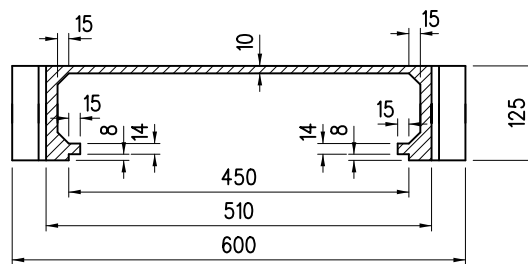
SIDE VIEW SECTION B-B



FRONT ELEVATION



PLAN



SECTION A-A

Notes:

1. Dimensions are in millimetres.
2. All corners are to be rounded to approximately 2 mm radius.
3. Other than bolts and nuts, material is to be cast iron grade EN-GJL-150 of BS EN 1561.
4. Kerb height < 115 - 1 top bar
Kerb height > 140 - 2 bars at top & bottoms.

| | | | |
|------|---|-----------------|--------|
| A | Note 3 Revised | Original signed | Nov 21 |
| | Former Drg. No. H3015/3 with general revision | - | Jun 94 |
| REF. | REVISION | SIGNATURE | DATE |

KERB OVERFLOW WEIRS
TYPE K3-325H

HIGHWAYS DEPARTMENT

REFERENCE

DRAWING No.

CAD

SCALE

1 : 10

H 3122A