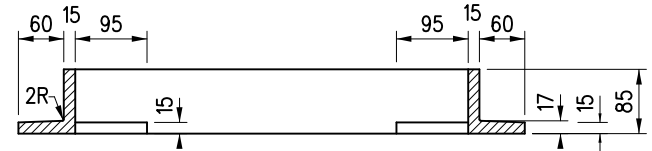
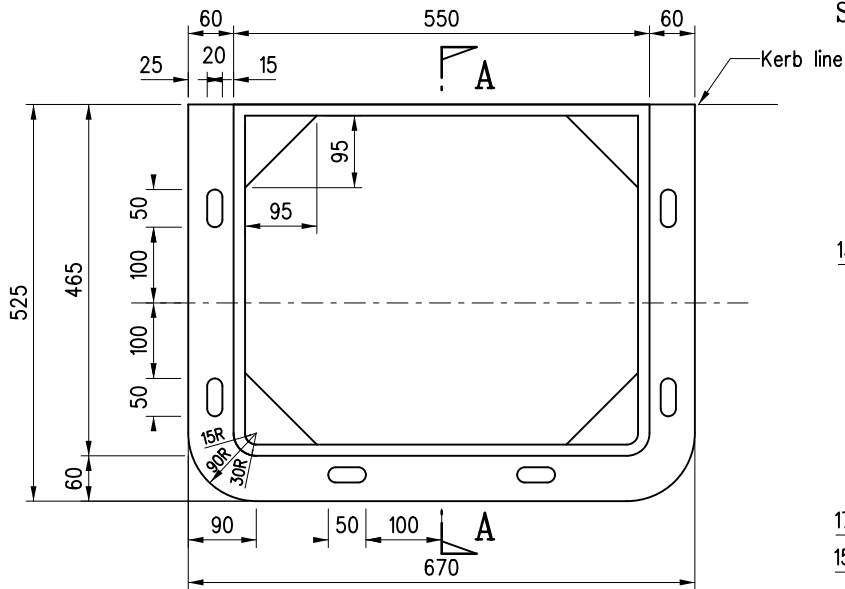


SLOT FOR ANCHOR BOLT
1 : 2

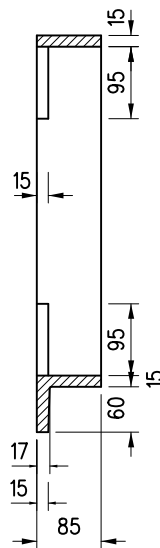


SECTION B-B

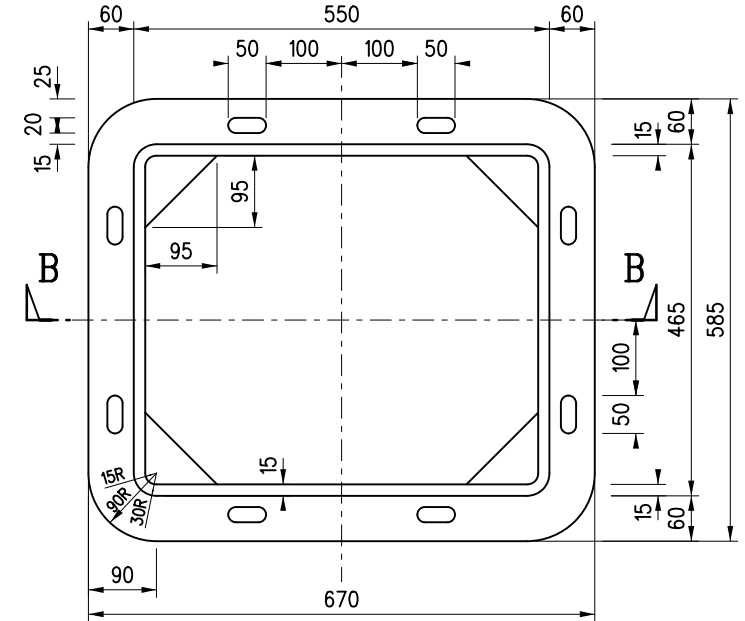


FRAME

(For Gully Grating Adjacent to Kerb)



SECTION A-A



FRAME

(For Gully Grating Away from Kerb)

Notes :

1. Dimensions are in millimetres.
2. All corners are to be rounded to approximately 2mm radius.
3. Cast Iron for frames and gratings is to conform with grade EN-GJL-150 of BS EN 1561.

A	Note 3 Revised	Original signed	Nov 21
	Former Drg. No.H3011/1 with general revision	-	Jun 94
REF.	REVISION	SIGNATURE	DATE

HIGHWAYS DEPARTMENT

GULLY GRATING TYPE GA1-450 -
517x432 DOUBLE TRIANGULAR SHALLOW FRAME

REFERENCE H.O. 7/1/6	DRAWING No. H 3116A	CAD
SCALE 1 : 10 or As Shown		