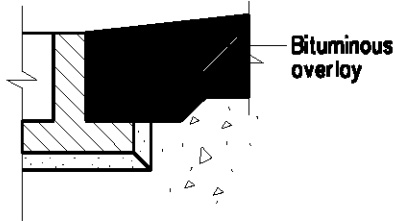
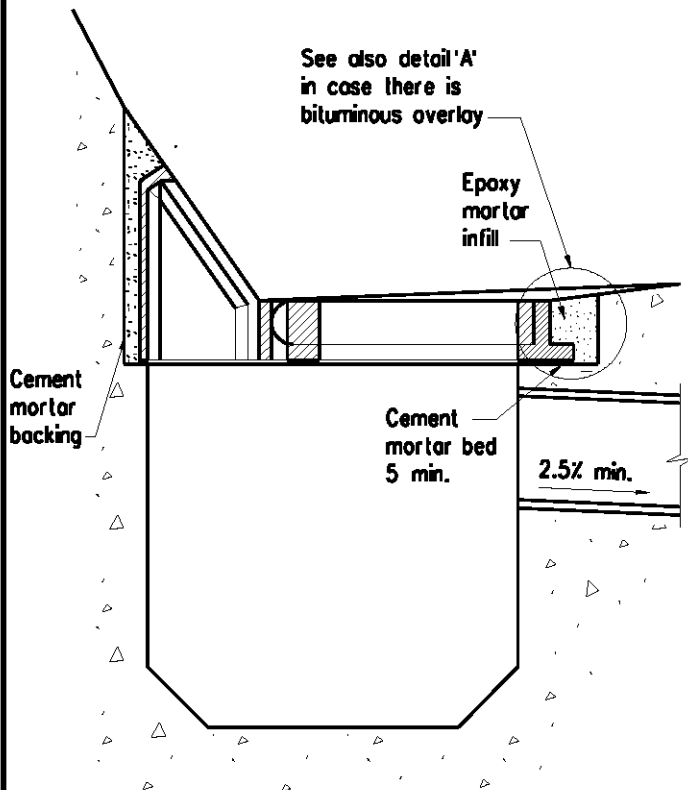
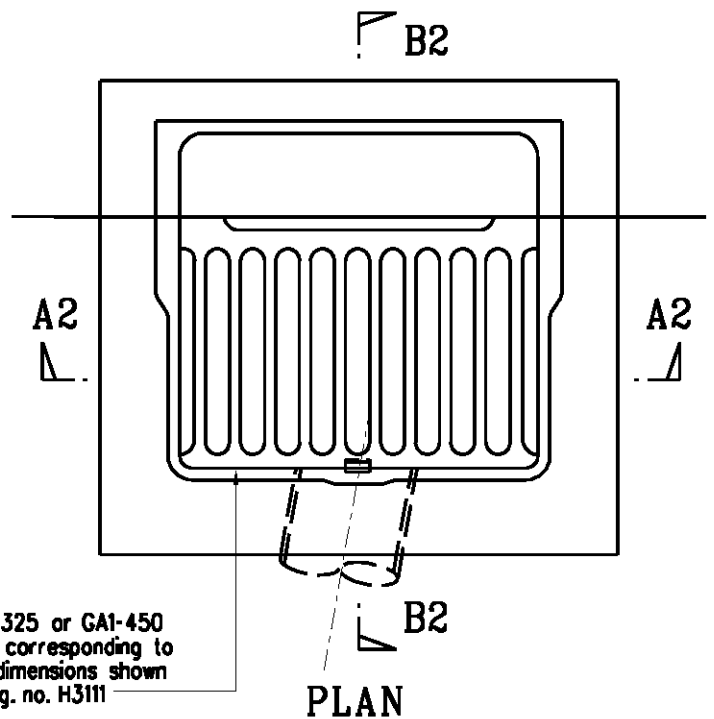


FINAL STAGE

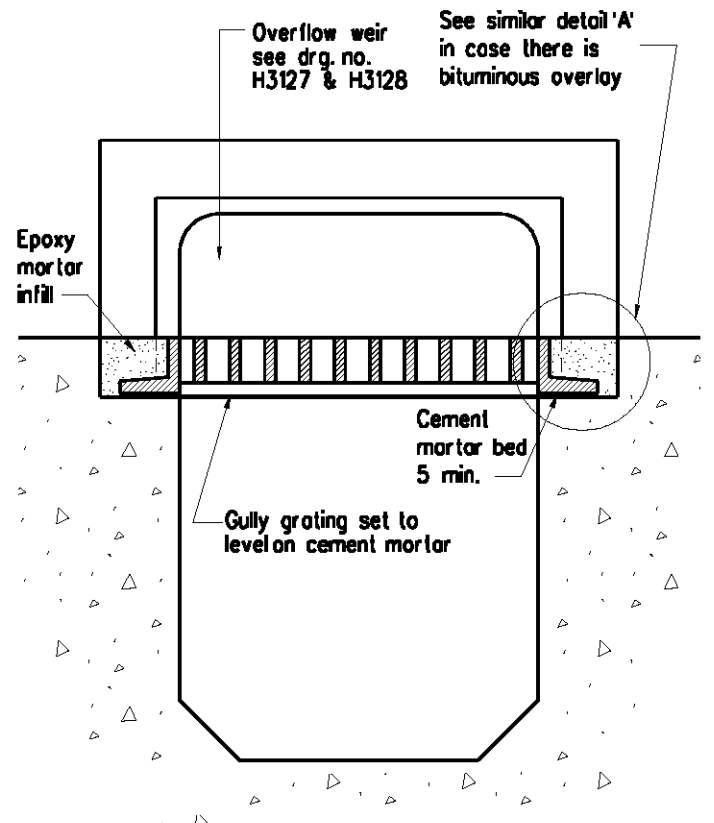


DETAIL 'A'

(if there is bituminous overlay)



SEC B2 - B2



SEC A2 - A2

Notes :

1. For paving with a friction course, grating installation arrangement shall also follow H3106
2. Dimensions are in millimetres.

	Former drg. no. H3007A with general revision		June 94
REF.	REVISION	SIGNATURE	DATE

**TYPICAL GULLY
INSTALLATION FOR
HIGHWAY STRUCTURES
(SHEET 2 OF 2)**

HIGHWAYS DEPARTMENT		
REFERENCE	DRAWING No.	CAD
SCALE	H 3112	
1 : 10		