

SECTION A-A

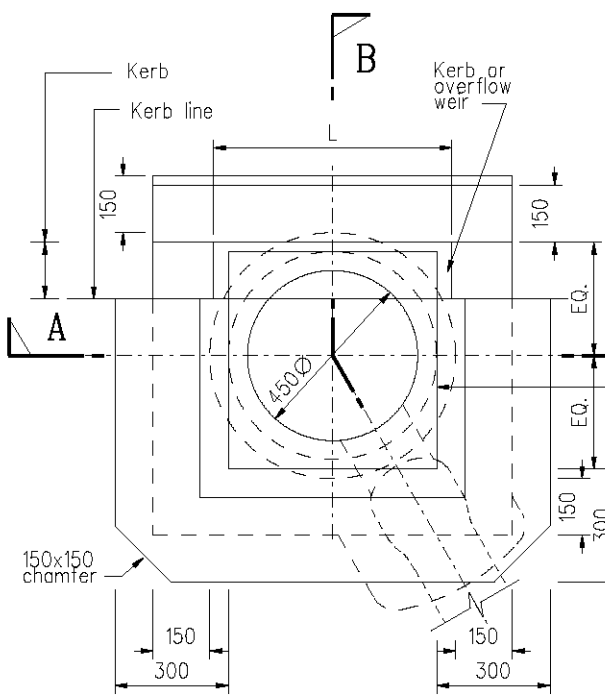
Note :

1. Trapped gullies are only necessary if stormwater carrier drain is likely to be contaminated by sewage e.g. when carrier drain is a combined drain
2. Plug chain shall be min. 3mm stainless steel (S.S.), securely fixed to the plug and wall by S.S. anchor.

Appropriate type of kerb overflow weir

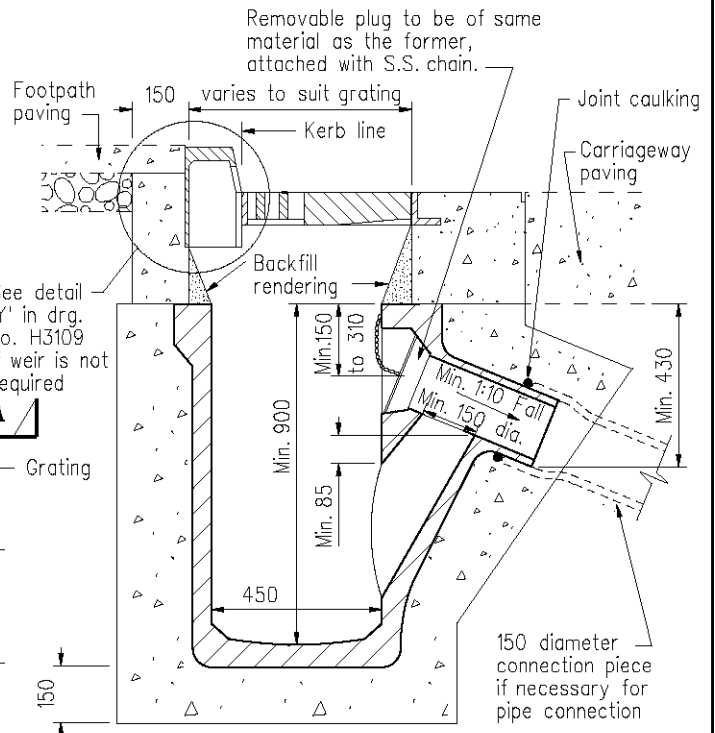
Isolation joint drg. no. H1107

Gully former to approved design, e.g. Precast conc. (BS 5911 Part 2)
Vitrified clay (BS 65)
UPVC or other approved plastic material



PLAN

(Only outlines of weir and grating are shown for clarity)



SECTION B-B

A	Trapped outlet details revised, plug chain specified.		Mar 11
	Former drg. no H3006 with general revision		June 94
REF.	REVISION	SIGNATURE	DATE

TRAPPED GULLY WITH GULLY FORMER

HIGHWAYS DEPARTMENT

REFERENCE

DRAWING No.

CAD

SCALE

1:20

H 3110A