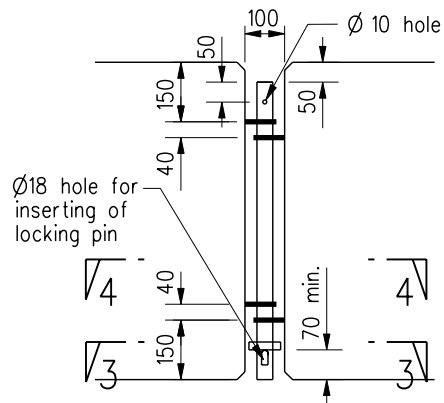


**ELEVATION VIEW**

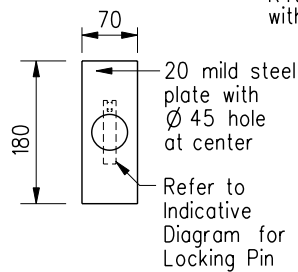
( 1 : 20 )

The offset of the tangent points from the concrete surface shall be located in such a manner that the R40 bar can be inserted without difficulty

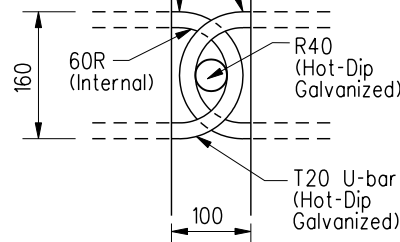


**DETAIL OF PIN CONNECTION**

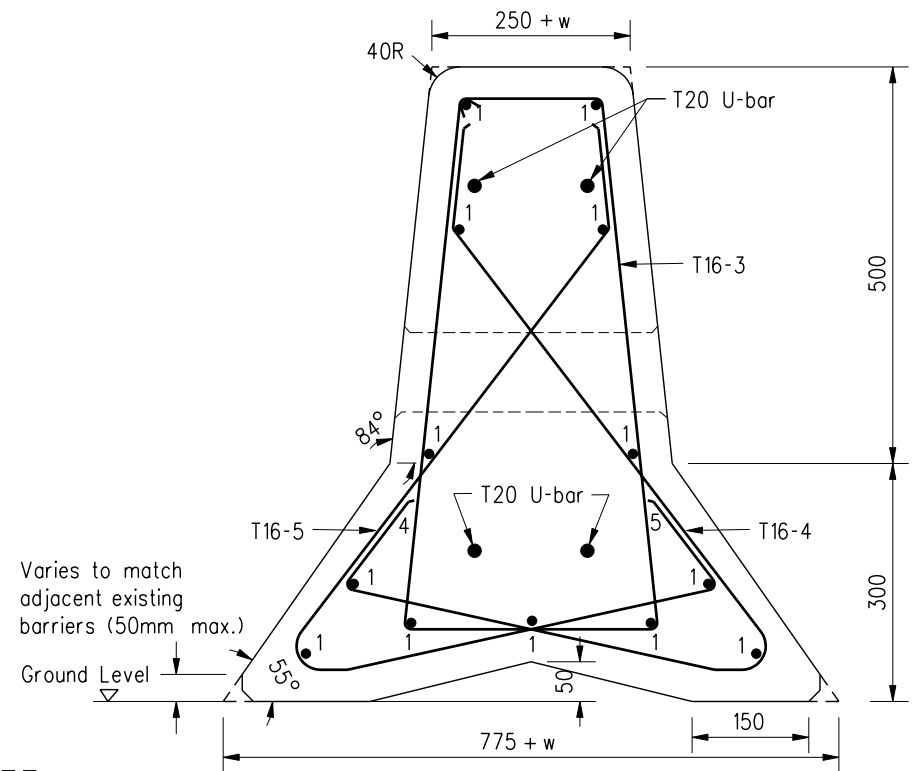
( 1 : 20 )



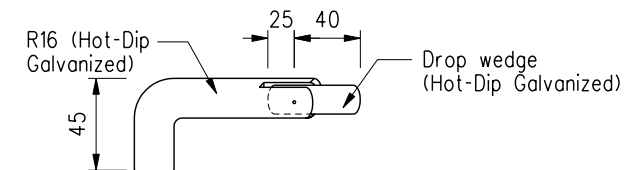
**SECTION 3-3**



**SECTION 4-4**



**SECTION 1-1**



**INDICATIVE DIAGRAM FOR LOCKING PIN**

(Exact detail to be proposed by the contractor for approval by the engineer)  
( Not to Scale )

Notes:

- 25x25 chamfers should be provided for all exposed edges having an internal angle of 90 or less unless otherwise specified.
- The value 'w' shall be decided by the Engineer, but shall not exceed 525.

	New Issue		Jan 07
REF.	REVISION	SIGNATURE	DATE

**HIGHWAYS DEPARTMENT**

REFERENCE	DRAWING No.	CAD
SCALE 1 : 10 or as shown	H 2256	

**REMOVABLE CONCRETE BARRIER  
FOR FACILITATING TRAFFIC DIVERSION -  
TYPICAL REMOVABLE BARRIER UNIT**