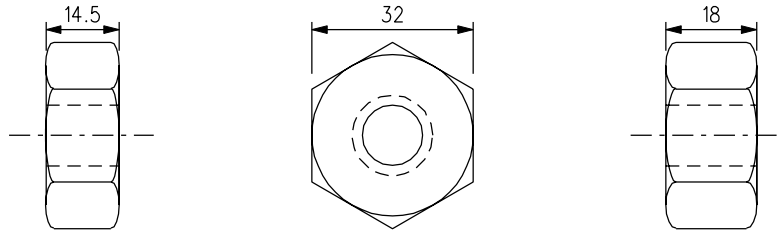


DETAILS OF SHOULDER

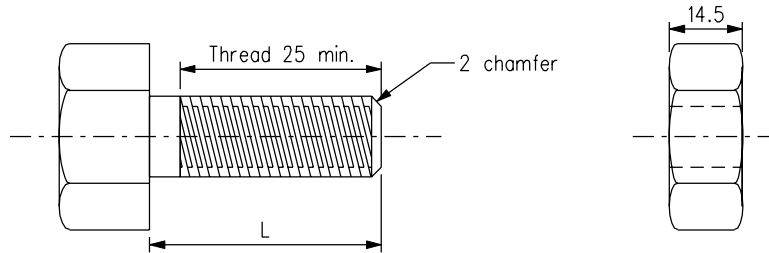
HEAD



HEXAGON NUT  
TYPE 1

HEXAGON NUT  
TYPE 2

M16 MUSHROOM HEAD BOLT AND NUT



HEXAGON NUT TYPE 1

M16 HEX HEAD BOLT AND NUT

Bolt dimension				
Position	Type of head	Recommended shank length (L)	Recommended threaded length	Recommended nut type
Splice Beam / Beam	Mushroom	32	22	hexagon Type 2
Beam / Blockout	Mushroom	50	40	hexagon Type 1
Beam / Stiffening piece / Blockout	Mushroom	50	40	hexagon Type 1
Blockout / Post	Hexagonal	30	min. 25	hexagon Type 1

Notes:

- Dimensions are in millimetres.
- Splicing of thrie-beams shall be grade 8.8 M16 mushroom head bolts. Connection of thrie-beam to blockout shall be grade 4.6 M16 mushroom head bolts. Connection of blockout to post shall be grade 4.6 M16 hex head bolts.
- Nuts shall be tapped 0.4mm oversize to accommodate the galvanized coating.
- Bolts and nuts shall be hot dip galvanized in accordance with Part 4, Section 11 of the General Specification of Civil Engineering Works.
- Bolts and nuts shall be in accordance with Section 18 of the General Specification of Civil Engineering Works.

	New issue		Nov. 02
REF.	REVISION	SIGNATURE	DATE

THRIE-BEAM - SPLICE  
BOLTS AND NUTS

HIGHWAYS DEPARTMENT

REFERENCE	DRAWING No.	CAD
SCALE 1 : 1.5 or diagrammatic	H 2197	