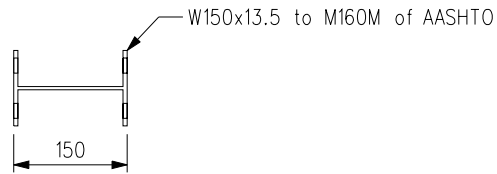
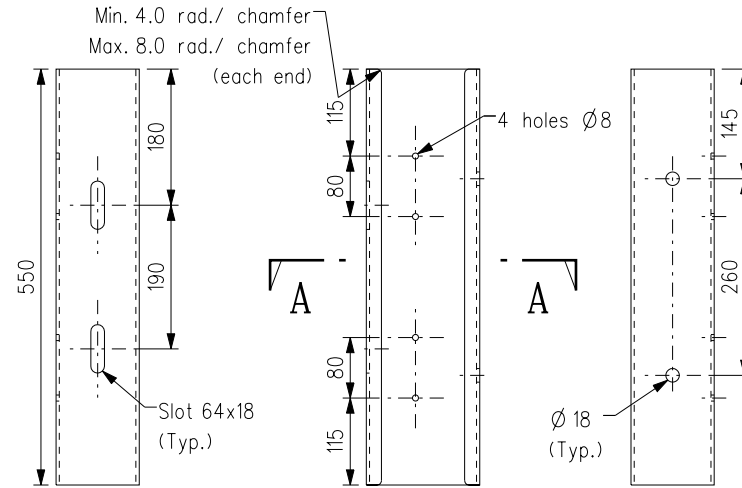


ELEVATIONS

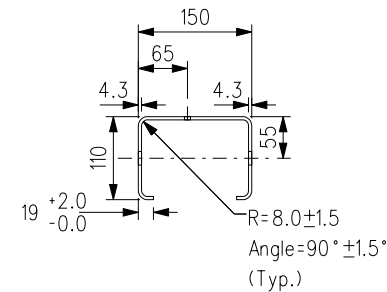


SECTION B - B

STANDARD BLOCKOUT FOR I-POST



ELEVATIONS



SECTION A - A

STANDARD BLOCKOUT FOR C-POST

Notes:

1. See drawing H 2190 and H 2193 for notes.
2. See drawing H 2195 for capping requirements.

A	Note 2 added		Mar 11
	New issue		Nov 02
REF.	REVISION	SIGNATURE	DATE

THREE-BEAM -
TYPICAL DETAILS FOR
STANDARD BLOCKOUT

HIGHWAYS DEPARTMENT

REFERENCE	DRAWING No.	CAD
SCALE	H 2194A	
1 : 10		