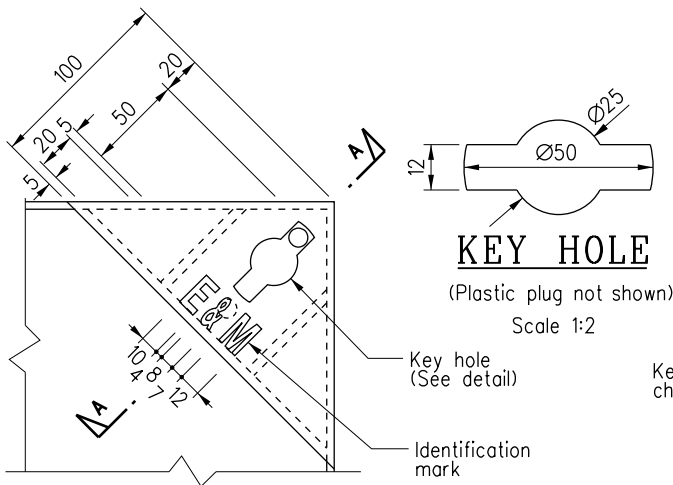


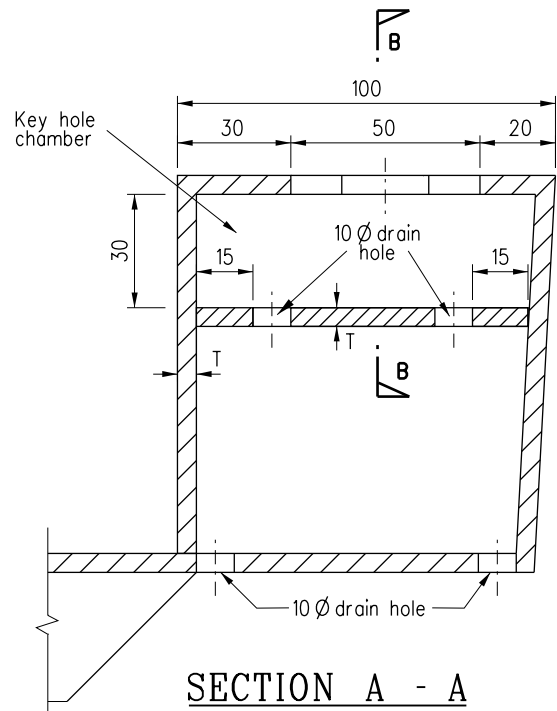
DETAIL 'X' (FOR ATC DRAWPIT)

Scale 1:5



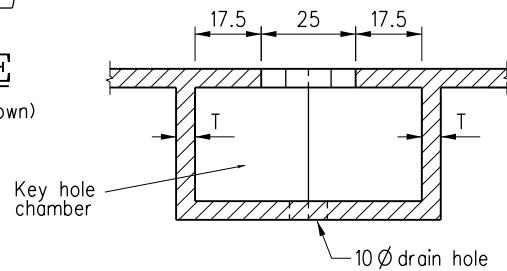
DETAIL 'X' (FOR E&M DRAWPIT)

Scale 1:5



SECTION A - A

Scale 1:2



SECTION B - B

Scale 1:2

Notes :

1. All dimensions in millimetres.
2. Cover and frame shall be produced in accordance with BS EN124.
3. All steel members shall be fabricated with grade 43 steel to BS4360.
4. Cover and frame shall be hot-dipped galvanized to BS EN1461.
5. 4mm continuous fillet weld complying with BS4872 shall be used.
6. The external edges of the cover and internal faces of the frame shall be coated with a non-setting, thick lubricant, such as petroleum jelly, in order to prevent jamming the cover and frame due to sand grains entering into the gap after final fixing.
7. The recessed cover is designed to accommodate paving block up to a maximum thickness of 80mm or to infill with wearing course at cycle track of bituminous pavement.
8. The paving blocks within the recessed cover shall be bedded on cement mortar. Jointing sand shall be applied to the whole cover with compaction.
9. The identification mark should be engraved on the cover.

10. Classes of manhole covers are designed to BS EN124 as follows:-

Class	Manhole cover
A15	For area only used by pedestrians and pedal cyclists.
B125	For run-ins, footways, pedestrian areas, car parks and areas where slow-moving emergency vehicles, service and delivery vehicles and refuse collection vehicles, etc. have access.

11. For cover of drawpits at cycle track of bituminous pavement, the infill of the recess cover shall be bituminous wearing course of nominal aggregate size 10.
12. Plastic plugs should be installed on key holes, with relevant details agreed by the Engineer.

REF.	REVISION	SIGNATURE	DATE
C	Note 12 added	Original Signed	May 16
B	Note 7 revised and note 11 added	-	Jul 10
A	Detail 'X' revised.	-	Dec 04
	New Issue	-	Aug 01

FABRICATED STEEL RECESSED COVER AND FRAME FOR ATC/E&M DRAWPIT OPENING FROM 400X400 TO 600X600 (SHEET 3 OF 3)

HIGHWAYS DEPARTMENT

REFERENCE

DRAWING No.

CAD

SCALE

AS SHOWN

H 2186C