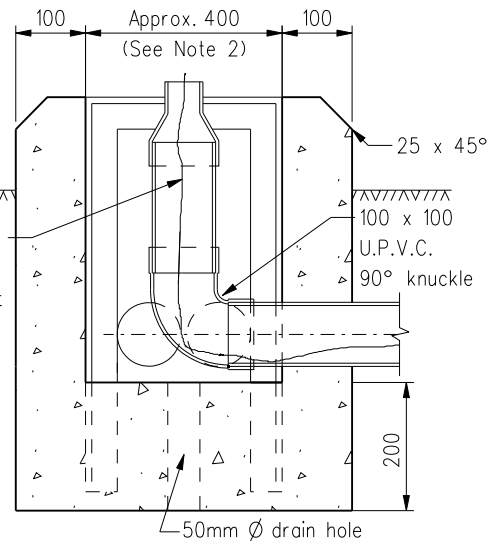
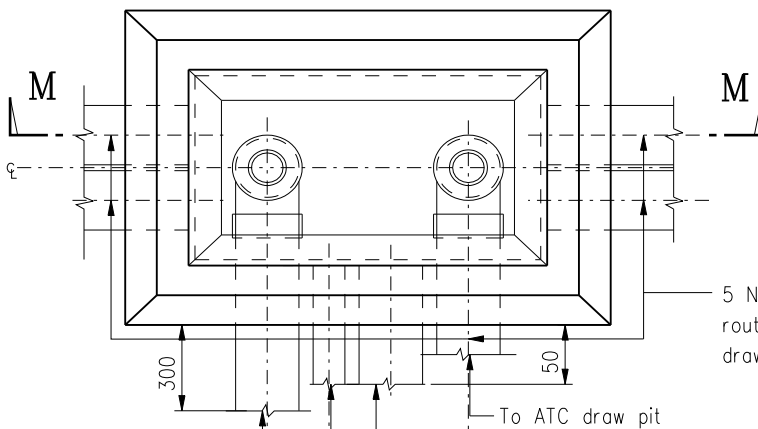


SECTION M - M



SECTION N - N



5 Nos. 100mm U.P.V.C. cable ducts routing to suit site conditions and draw pit locations.

(1) **For telephone company connection**
 100mm ϕ lead-in pipe with 6mm ϕ nylon draw wire, temporarily plug-sealed for telephone company connection or

(2) **For ATC comm. line connection**
 100mm ϕ U.P.V.C. duct to ATC draw pit

PLAN

Note :

1. See H2157 for general notes.
2. Internal dimensions of controller plinth to suit size of iron root.

C	Typo in Section M-M amended		Oct 13
B	1. Details of duct to ATC draw pit added 2. Drawing title amended		Dec 05
A	Details of Type C 3000 drawpit replaced by Type Delta 4		Nov. 03
	Former Drg. No. H2036/10A with general revision		June 94
REF.	REVISION	SIGNATURE	DATE

DETAILS OF PLINTH FOR
 TRAFFIC CONTROLLER
 (TYPE DELTA 4)

HIGHWAYS DEPARTMENT

REFERENCE
 DRG NO. ATC 1092

DRAWING No.

CAD

SCALE
 Diagrammatic

H 2164C