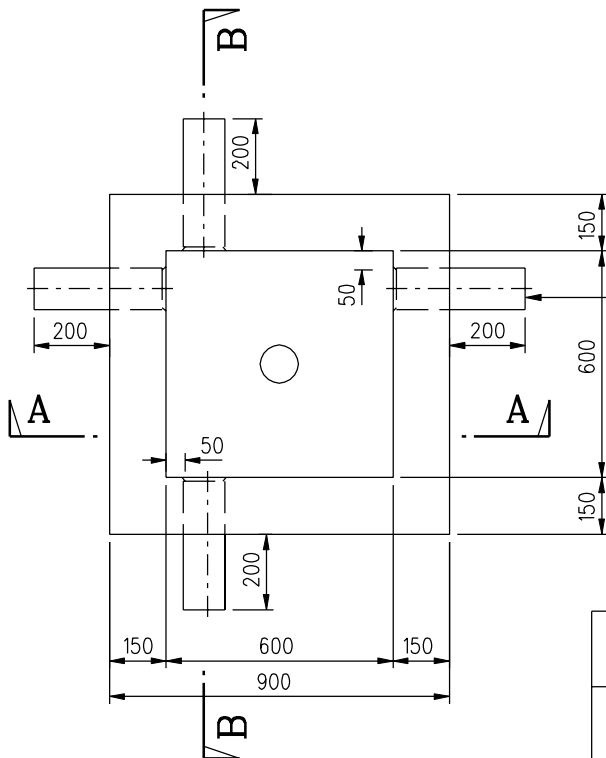


SECTION A - A

SECTION B - B



PLAN

(C.I. cover and frame omitted)

Number of UPVC /G.I. pipe (max. 8 Nos.) of 100 I.D. to be built according to site requirement

Note :

1. See H2157 for general notes.

\* See typical Trench Section in H2158 for minimum depth.

B	General revision		Nov. 02
A	Reference Drg.No. of the description for section A-A & B-B revised		May 99
	Former Drg. No. H2036/4A with general revision		June 94
REF.	REVISION	SIGNATURE	DATE

**ATC DRAW PIT - SINGLE CONCRETE DRAW/JOINTING CHAMBER (FOR DEPTH OF DRAW PIT NOT EXCEEDING 850mm)**

**HIGHWAYS DEPARTMENT**

REFERENCE Drg. No. ATC/HK/60

DRAWING No.

CAD

SCALE 1 : 20

**H 2159B**