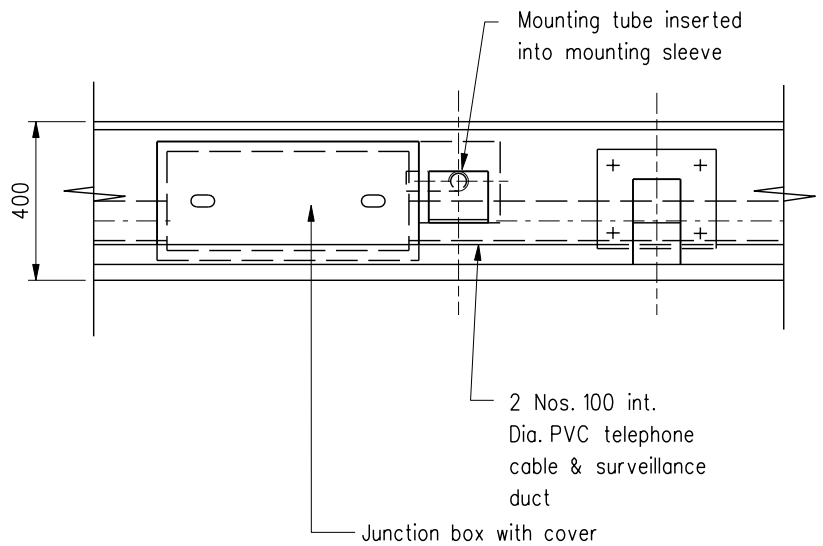


SECTION A - A

ELEVATION

Notes :

1. All dimensions are in millimetres.
2. Longitudinal location of emergency telephones to be determined by CE/TCS.
3. For details of junction box, mounting tube & sleeve etc. see Drg. Nos. H2155 & H2156
4. Changes in details subject to approval by CE/TCS & DEMS.



PLAN

	Former Drg. No. H2035/4 with general revision		June 94
REF.	REVISION	SIGNATURE	DATE

EMERGENCY TELEPHONE  
MOUNTING DETAILS - BRIDGE  
WITH STEEL PARAPET

HIGHWAYS DEPARTMENT

REFERENCE  
ATC 265<sup>A</sup>

DRAWING No.

CAD

SCALE  
1 : 20

H 2153