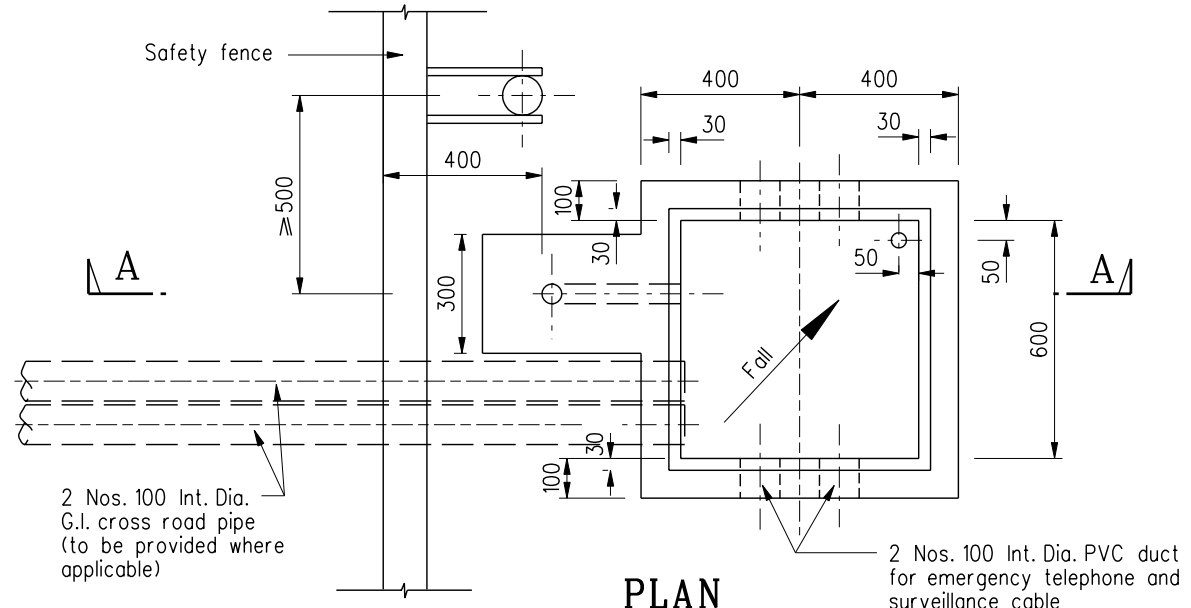


**SECTION A - A**



**PLAN**

(Cover removed)

**Notes:**

1. Where the concrete footing is located in block paved footpath, the footing should be lowered to allow for the paving blocks and the sand course.
2. Cable ducts shall be sealed by using plugs for blank ducts and sealing material for ducts containing cables as shown on Drg. Nos. H 2244 to H 2245. If the cables are abandoned, the cable ducts shall be sealed by using plugs as shown on Drg. No. H 2244.

B	Note 2 added.		Apr 05
A	Note 1 added.		Nov 99
	Former Drg. No. H2035/1 with general revision		June 94
REF.	REVISION	SIGNATURE	DATE

**EMERGENCY TELEPHONE  
MOUNTING DETAILS  
- ROADSIDE  
(SHEET 1 OF 2)**

**HIGHWAYS DEPARTMENT**

REFERENCE ATC 261 <sup>A</sup>	DRAWING No. <b>H 2150B</b>	CAD
SCALE 1:20		