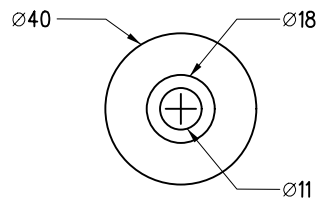
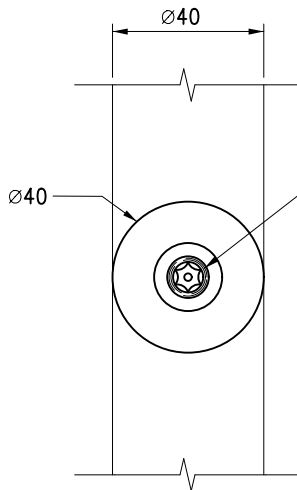


ELEVATION



PLAN

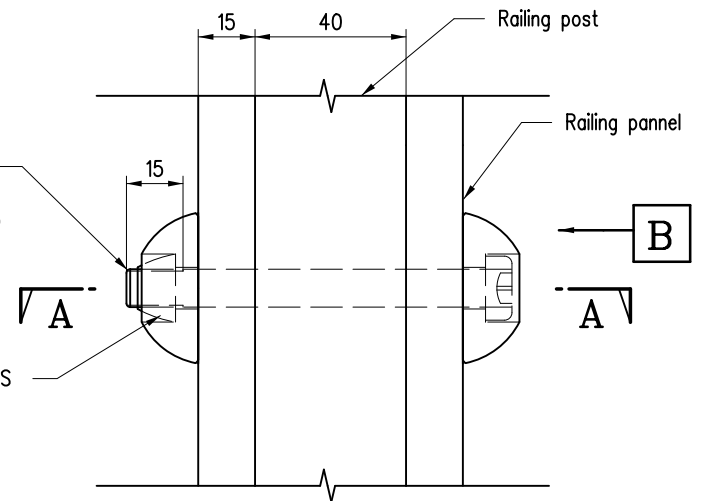
**GRADE 304 STAINLESS STEEL
DOME SHAPE STIFFENER**



VIEW B

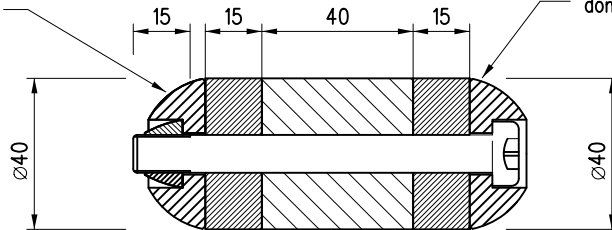
A2-70 STAINLESS
STEEL TORX BOLT
(M10 X 95mm LONG,
15mm THREAD AT END)

ANTI-THEFT SHEAR NUTS



ELEVATION

Grade 304 stainless steel
dome shape stiffener



SECTION A-A

Grade 304 stainless steel
dome shape stiffener

Notes:

1. All dimensions are in millimetres.
2. The thread and anti-theft shear nuts shall be deformed after installation.

D	Details of bolts and nuts revised	Original signed	Jun 20
C	Drawing title updated	-	Jan 18
B	DETAIL 'X' and 'Y' revised	-	Nov 03
A	DETAIL 'X' revised	-	Sept 96
	Former Drg. No. H2019/1 with general revision	-	June 94
REF.	REVISION	SIGNATURE	DATE

TYPE 2 AND TYPE 4 RAILINGS - DETAILS

HIGHWAYS DEPARTMENT

REFERENCE

DRAWING No.

CAD

SCALE

1:2

H 2131D