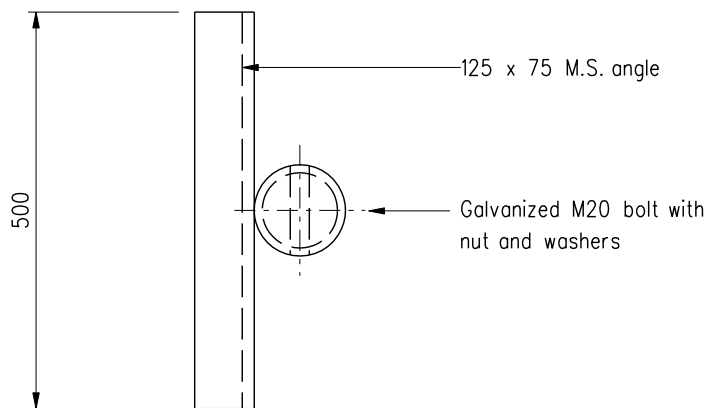


ELEVATION

END ELEVATION



PLAN

Notes:

1. Dimensions are in millimetres.
2. 100x50x5 R.H.S. or 150x75 channel may be used for post as alternatives see Drg. No. H2123 & H2124.
3. Components are to be hot dip galvanized to BS EN ISO 1461:1999.
4. Anchor posts are to be used with compacted earth footings.
5. Steel is to be Grade 43A B.S. 4360

A	Note 3 updated		Sep 07
	Former Drg. No. H2009 with general revision		Jun 94
REF.	REVISION	SIGNATURE	DATE

**ANCHOR FOR END
BEAM SECTION OF
BEAM BARRIER**

HIGHWAYS DEPARTMENT

REFERENCE

DRAWING No.

CAD

SCALE

1 : 10

H 2116A