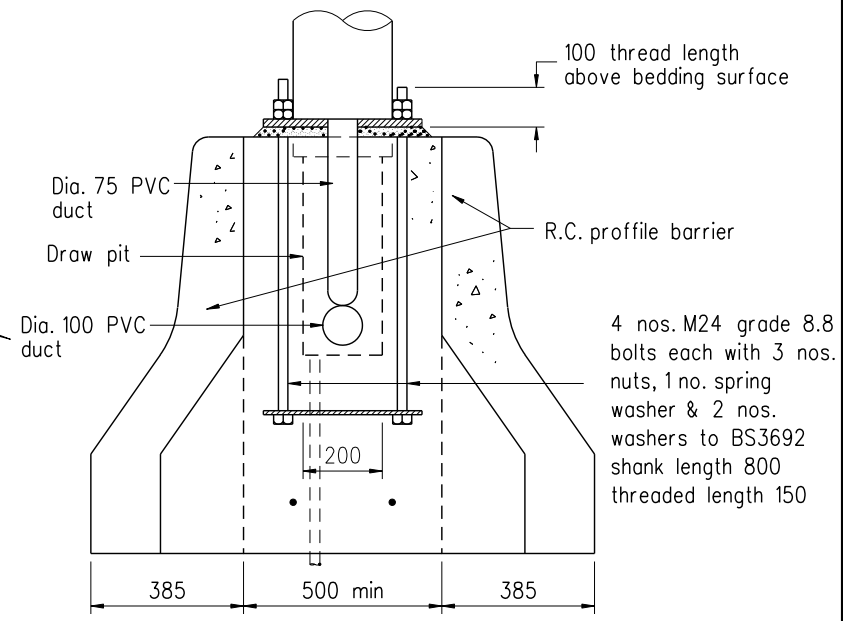
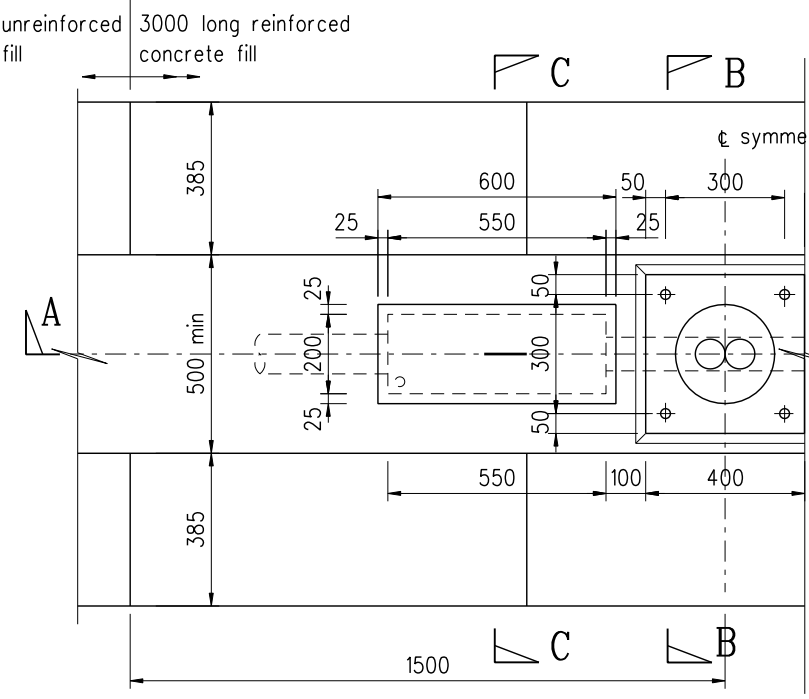


SECTION A-A

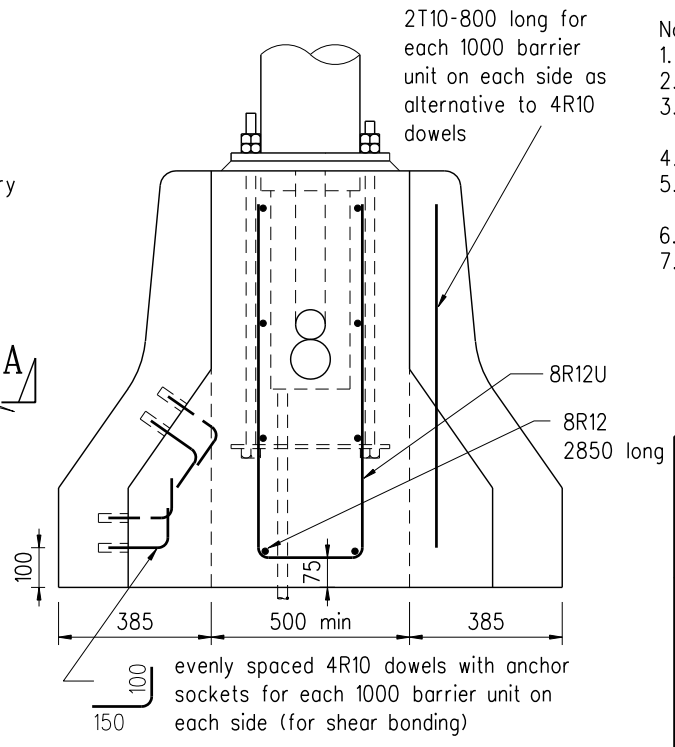


SECTION B-B (U-bars not shown for clarity)

- Notes:
1. All dimensions are in millimetres.
 2. The bolts shall be fixed using suitable template.
 3. The anchor bolts & nuts shall be stainless steel or hot dip galvanised to BS EN ISO 1461 : 1999.
 4. All ducts shall be provided with draw wires.
 5. The thread & nuts shall be protected with bitumen after the column is fixed.
 6. Washers shall have a minimum dia. of 60mm & be 6mm thick.
 7. The Contractor may proposed shear bonding other than 4R10 dowels or 2T10 as shown for the Engineer's approval.



PLAN (PART)



SECTION C-C

A	Note 3 updated		Sep 07
	Former Drg. no. H2001/7 with general revision		Jun 94
REF.	REVISION	SIGNATURE	DATE

**MOUNTING DETAILS OF
FLANGED LIGHTING COLUMN
ON CONCRETE PROFILE BARRIER**

HIGHWAYS DEPARTMENT

REFERENCE	DRAWING No.	CAD
SCALE	H 2106A	
1:20		