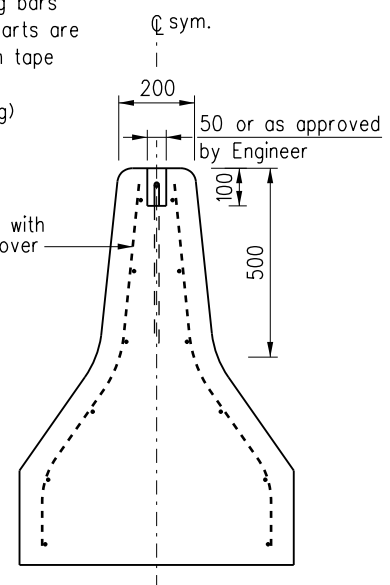
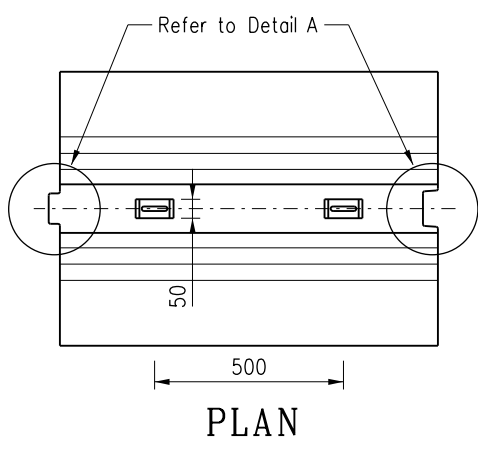


ELEVATION

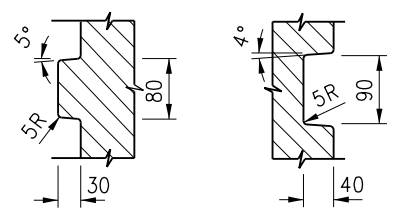
2.Nos. 12Ø M.S. Permanent lifting bars for each precast unit (exposed parts are to be wrapped with anticorrosion tape after installing the unit but prior to placing insitu concrete topping)



SECTION A - A
(Refer to H2101C for other dimensions)



PLAN



DETAIL A
Note: All rad 5
Scale: 1:10

Notes:

1. Dimensions are in millimetres.
2. Concrete grade 30/20.
3. Concrete finish shall be Class F3 on surfaces for transverse joints and F5 on exposed surfaces.
4. Steel fabric shall be welded steel fabric to B.S. 4483 type A 393.
5. Precast concrete profile barrier should be embedded below the carriageway by 250.
6. See Drg. No. H2101C for other typical details of concrete profile barrier.
7. Hook recesses shall be patched up with 1:5 cement/sand mortar after installation.
8. The gap formed between two installed adjoining precast concrete profile barriers shall be filled up with joint sealant to a depth at least 20mm.

A	Note 8 added	Original Signed	Sep 16
	New issue		Sept 13
REF.	REVISION	SIGNATURE	DATE

**STANDARD PRECAST
CONCRETE PROFILE
BARRIER-DOUBLE FACED**

HIGHWAYS DEPARTMENT		
REFERENCE	DRAWING No.	CAD
SCALE 1:20 or As shown	H 2104/2A	