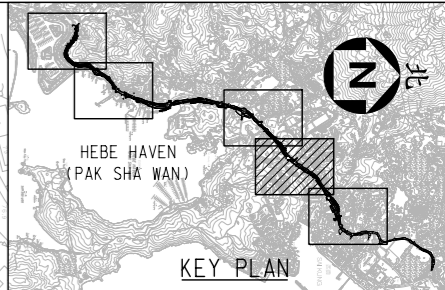
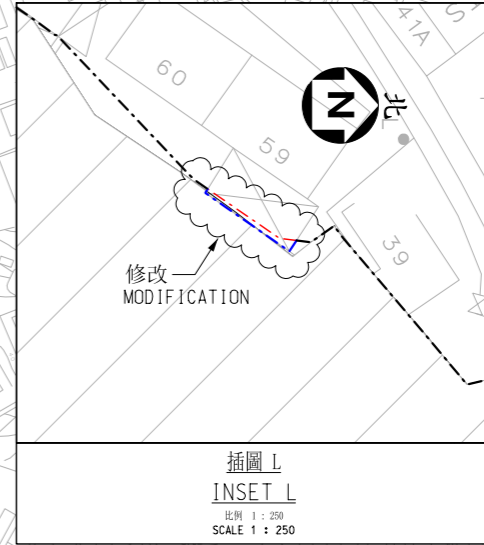
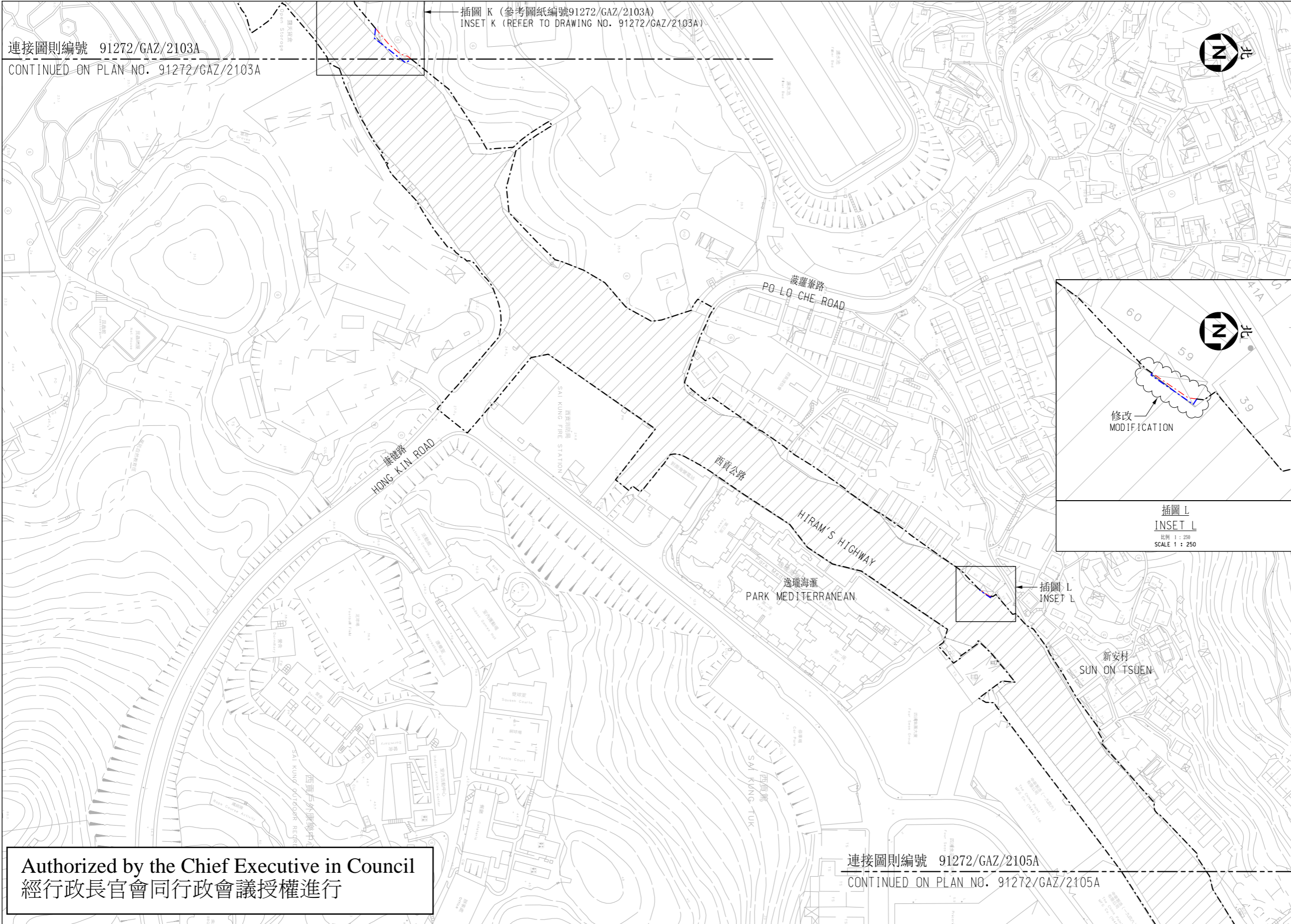


連接圖則編號 91272/GAZ/2103A
CONTINUED ON PLAN NO. 91272/GAZ/2103A

插圖 K (參考圖紙編號91272/GAZ/2103A)
INSET K (REFER TO DRAWING NO. 91272/GAZ/2103A)



註釋 NOTES :
1. 除在其他方面指定外, 所有量度以米為單位。
ALL DIMENSIONS ARE IN METRES UNLESS OTHERWISE STATED.
2. 所有水平均為約數, 以米為單位, 並在香港主水平基準上。
ALL LEVELS ARE APPROXIMATE VALUES AND IN METRES ABOVE HONG KONG PRINCIPAL DATUM.



Authorized by the Chief Executive in Council
經行政長官會同行政會議授權進行

連接圖則編號 91272/GAZ/2105A
CONTINUED ON PLAN NO. 91272/GAZ/2105A

工程名稱 PROJECT TITLE
工務計劃項目第6806TH號
匡湖居至西貢市之間的西貢公路分隔車道工程
PWP ITEM NO. 6806TH
DUALLING OF HIRAM'S HIGHWAY
FROM MARINA COVE TO SAI KUNG TOWN

圖則名稱 PLAN TITLE
根據《道路(工程、使用及補償)條例》(第370章)而在憲報公布之修改圖則
MODIFICATION PLAN FOR
GAZETTING UNDER ROADS
(WORKS, USE AND COMPENSATION)
ORDINANCE (CHAPTER 370)

LEGEND 圖例 :
ORIGINAL 原有部分
--- 原有施工區界限
ORIGINAL LIMIT OF WORKS AREA

MODIFICATION 修改部分
--- 經修改的施工區界限
MODIFIED LIMIT OF WORKS AREA
--- 原有施工區界限將予取消
ORIGINAL LIMIT OF WORKS AREA TO BE DELETED

道路工程原載於圖則第91272/GAZ/1000至1007, 並經修訂圖則第91272/GAZ/2100至2106修訂, 圖則第91272/GAZ/1000至1007及修訂圖則第91272/GAZ/2100至2106已按《道路(工程、使用及補償)條例》(第370章)第8(2)條的規定, 分別在2020年1月3日和2020年1月10日刊登的憲報政府公報以及2020年11月27日刊登的憲報政府公報提及。
ROADWORKS ARE SHOWN ON PLANS NOS. 91272/GAZ/1000 TO 1007 AND AS AMENDED BY AMENDMENT PLANS NOS. 91272/GAZ/2100 TO 2106. THE PLANS NOS. 91272/GAZ/1000 TO 1007 REFERRED TO IN G.N. 43 AND AMENDMENT PLANS NOS. 91272/GAZ/2100 TO 2106 REFERRED TO IN G.N. 6680 WERE PUBLISHED UNDER SECTION 8(2) OF THE ROADS (WORKS, USE AND COMPENSATION) ORDINANCE (CHAPTER 370) RESPECTIVELY ON 3 JANUARY 2020 AND 10 JANUARY 2020 AND ON 20 NOVEMBER 2020 AND 27 NOVEMBER 2020.

圖則編號 PLAN NO.
91272/GAZ/2104A
(五張中的第四張)
(SHEET 4 OF 5)
比例 SCALE
1 : 1000 @ A1
或如圖示
OR AS SHOWN

主要工程管理處
Major Works
Project Management Office



CAD File: 91272_GAZ_2104A.dgn