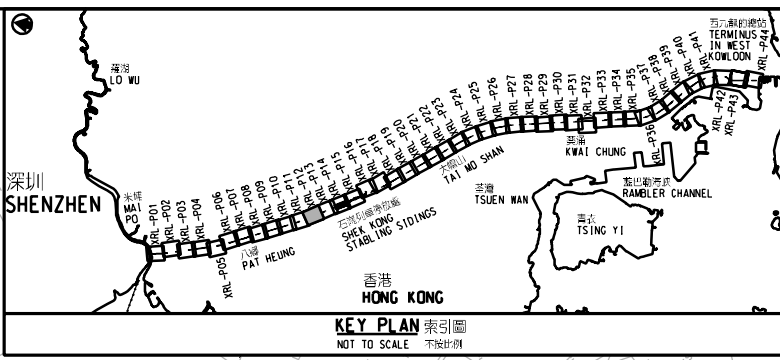
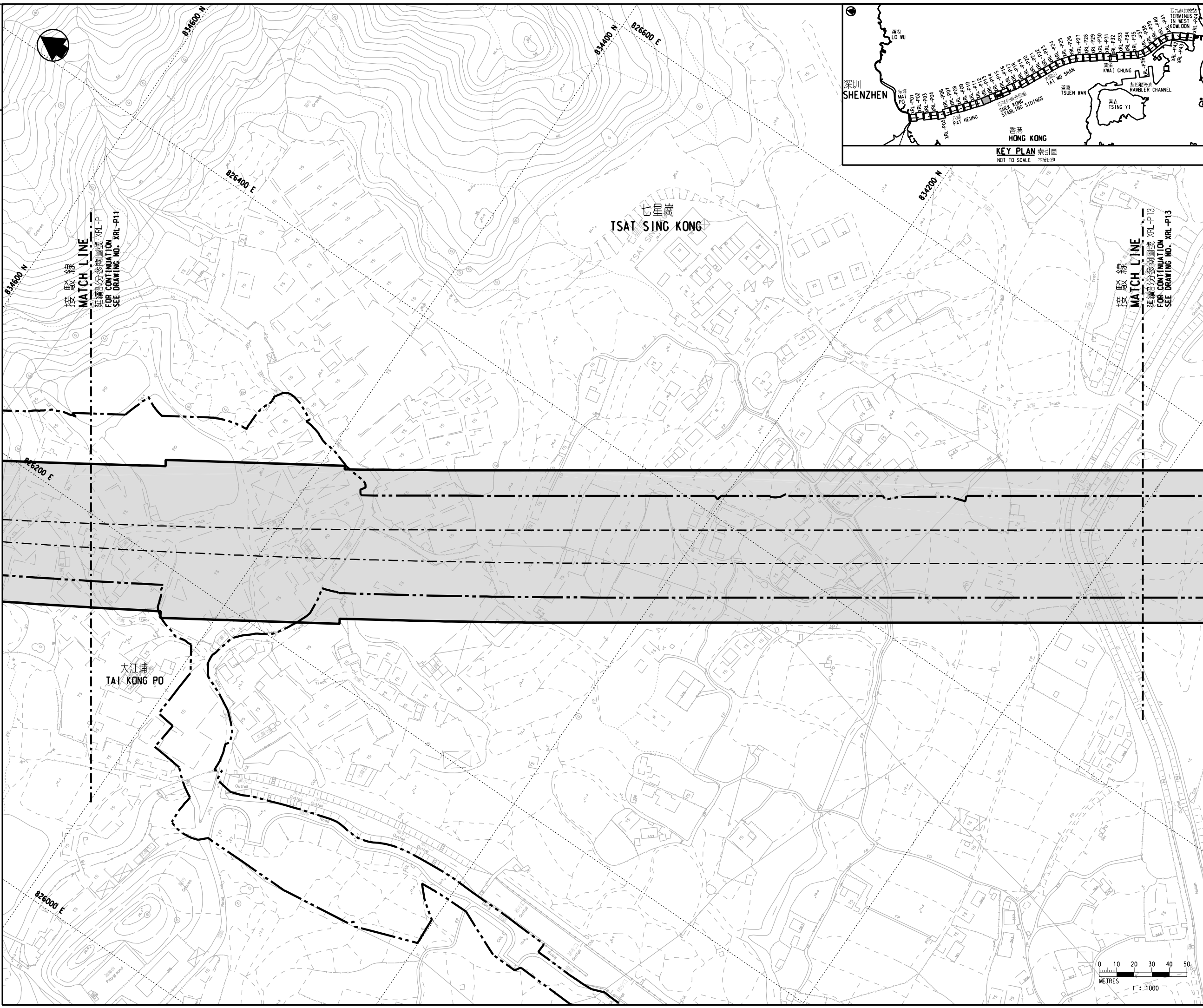


DRAWING NO. XRL - P12



- 圖例 LEGEND**
- 方案界線
BOUNDARY OF THE SCHEME
 - 擬建的鐵路中線
PROPOSED RAILWAY TRACK CENTRE LINE
 - 擬建的鐵路車站
PROPOSED RAILWAY STATION
 - 就建築工程（包括在方案界線以外進行的建築工程）與方案或鐵路的營運或維修不相容，可行使建築圖則或建築工程展開的控制的土地範圍
AREA OF LAND ON WHICH CONTROL OF BUILDING PLANS OR COMMENCEMENT OF BUILDING WORKS (INCLUDING BUILDING WORKS OUTSIDE THE BOUNDARIES OF THE SCHEME) WHICH ARE INCOMPATIBLE WITH THE SCHEME OR THE OPERATION OR MAINTENANCE OF THE RAILWAY MAY BE REQUIRED

修訂表
TABLE OF AMENDMENTS

修訂 REV	日期 DATE	繪圖 BY	核對 SUB	批准 APP	說明 DESCRIPTION

獲准發出
APPROVED FOR ISSUE

路政署
鐵路拓展處處長(2)
GOVERNMENT ENGINEER/
RAILWAY DEVELOPMENT (2)
HIGHWAYS DEPARTMENT

發出日期 DATE OF ISSUE

圖則名稱 DRAWING TITLE
 廣深港高速鐵路香港段
 鐵路條例(第519章)
 控制建築圖則及工程展開圖則
 44頁的第12頁
 HONG KONG SECTION OF
 GUANGZHOU - SHENZHEN - HONG KONG
 EXPRESS RAIL LINK
 RAILWAYS ORDINANCE (CHAPTER 519)
 CONTROL OF BUILDING PLANS AND
 COMMENCEMENT OF WORK PLAN SHEET 12 OF 44

圖號 DRAWING NO.
XRL - P12

比例 SCALE
1:1000 (A1)
或如顯示
OR
AS SHOWN

香港特別行政區政府
THE GOVERNMENT OF THE HONG KONG
SPECIAL ADMINISTRATIVE REGION

路政署
HIGHWAYS DEPARTMENT

鐵路拓展處
RAILWAY DEVELOPMENT OFFICE

