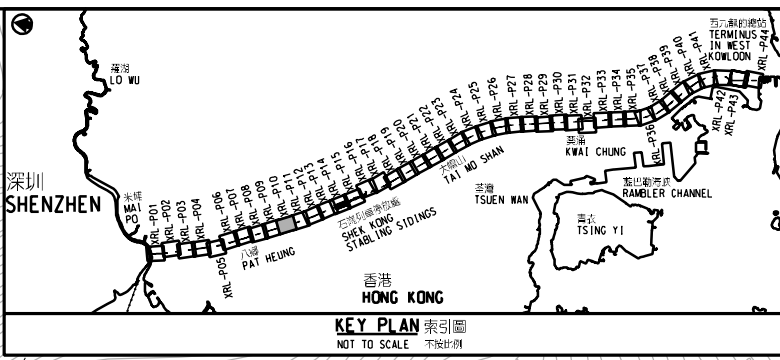
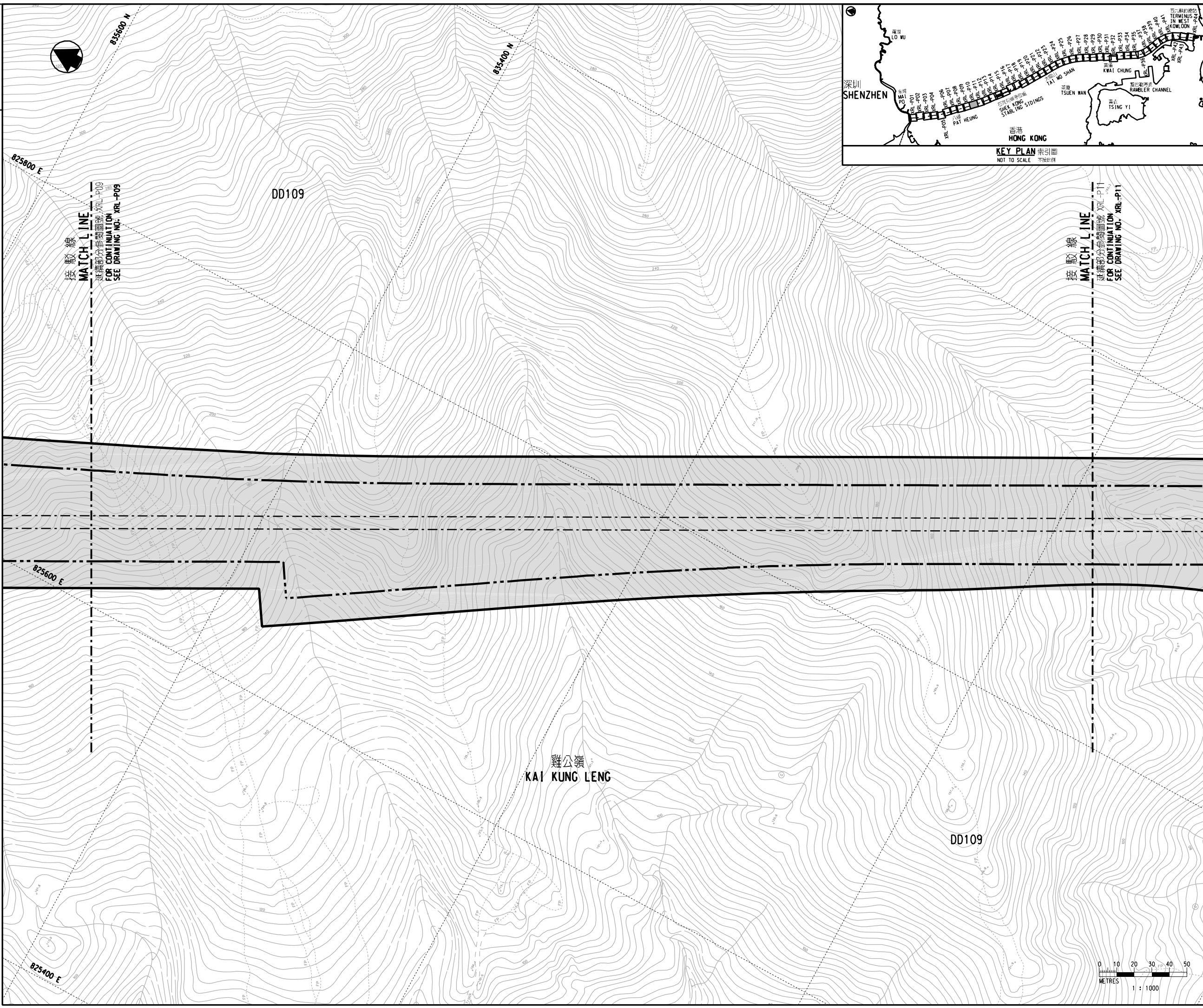


DRAWING NO. XRL - P10



圖例 LEGEND

- 方案界線
BOUNDARY OF THE SCHEME
- 擬建的路軌中線
PROPOSED RAILWAY TRACK CENTRE LINE
- 擬建的鐵路車站
PROPOSED RAILWAY STATION
- 就建築工程（包括在方案界線以外進行的建築工程）與方案或鐵路的管理或維修不相容，可行使建築圖則或建築工程展開的控制的土地範圍
AREA OF LAND ON WHICH CONTROL OF BUILDING PLANS OR COMMENCEMENT OF BUILDING WORKS (INCLUDING BUILDING WORKS OUTSIDE THE BOUNDARIES OF THE SCHEME) WHICH ARE INCOMPATIBLE WITH THE SCHEME OR THE OPERATION OR MAINTENANCE OF THE RAILWAY MAY BE REQUIRED

修改表 TABLE OF AMENDMENTS

修改 REV	日期 DATE	繪圖 BY	核對 SUB	負責 APP	說明 DESCRIPTION

獲准發出 APPROVED FOR ISSUE
 路政署
 鐵路拓展處處長(2)
 GOVERNMENT ENGINEER/
 RAILWAY DEVELOPMENT (2)
 HIGHWAYS DEPARTMENT

發出日期 DATE OF ISSUE

圖則名稱 DRAWING TITLE
 廣深港高速鐵路香港段
 鐵路條例(第519章)
 控制建築圖則及工程展開圖則
 44頁的第10頁
 HONG KONG SECTION OF
 GUANGZHOU - SHENZHEN - HONG KONG
 EXPRESS RAIL LINK
 RAILWAYS ORDINANCE (CHAPTER 519)
 CONTROL OF BUILDING PLANS AND
 COMMENCEMENT OF WORK PLAN SHEET 10 OF 44

圖號 DRAWING NO. XRL - P10
 比例 SCALE 1:1000 (A1)
 或如顯示
 OR
 AS SHOWN

香港特別行政區政府
 THE GOVERNMENT OF THE HONG KONG
 SPECIAL ADMINISTRATIVE REGION
 路政署
 HIGHWAYS DEPARTMENT
 鐵路拓展處
 RAILWAY DEVELOPMENT OFFICE

