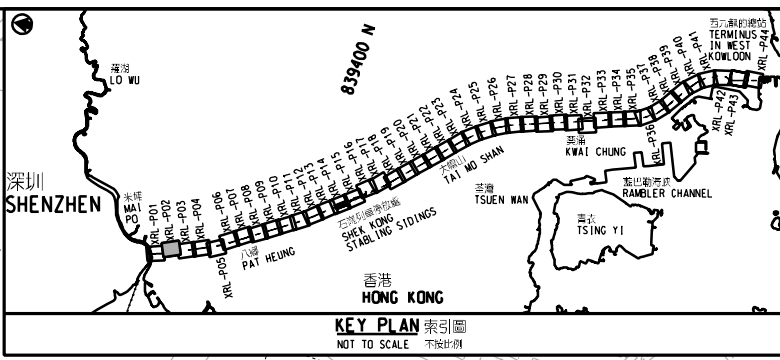
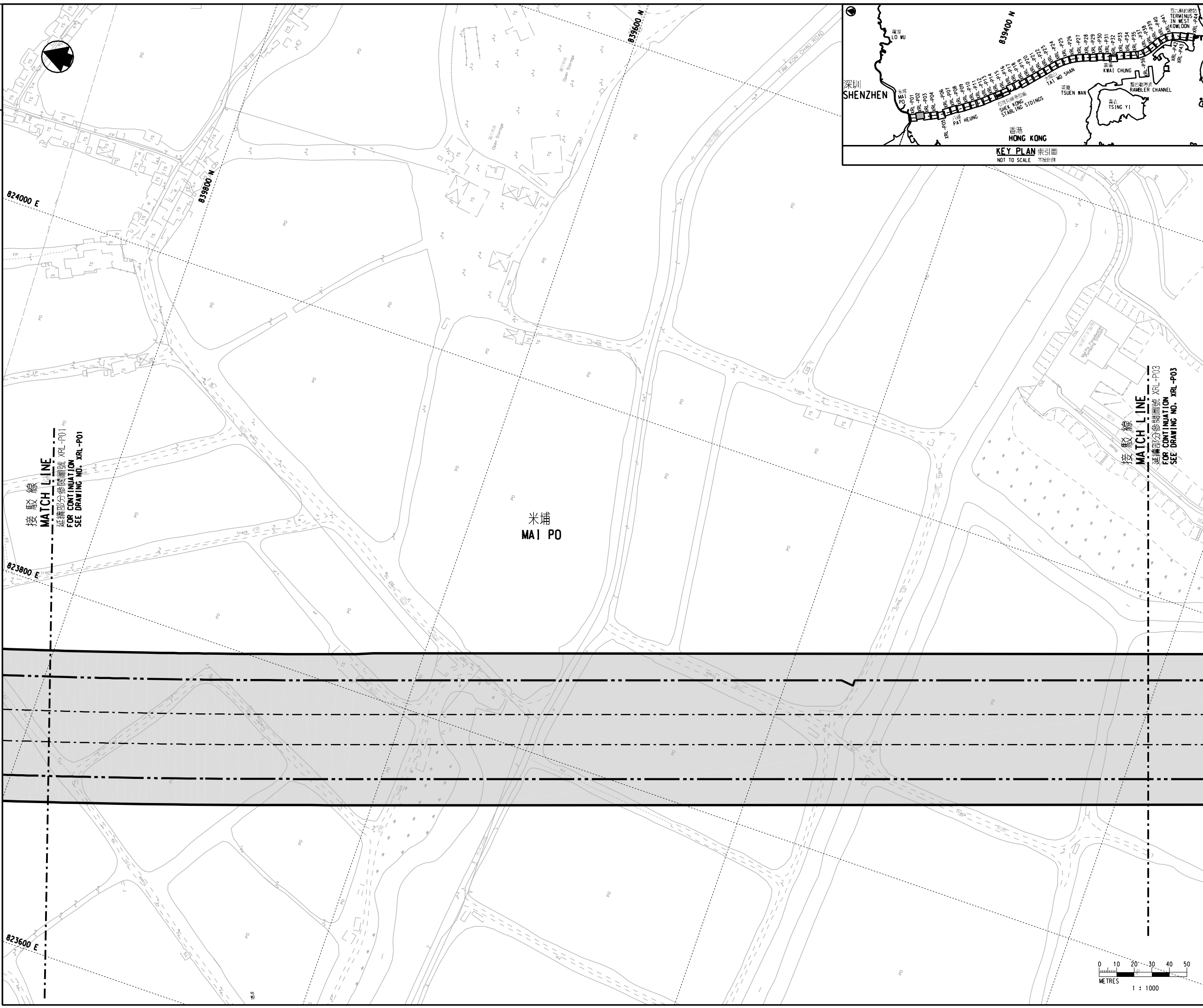


DRAWING NO. XRL - P02



- 圖例 LEGEND**
- 方案界線  
BOUNDARY OF THE SCHEME
  - 擬建的路軌中線  
PROPOSED RAILWAY TRACK CENTRE LINE
  - 擬建的鐵路車站  
PROPOSED RAILWAY STATION
  - 就建築工程（包括在方案界線以外進行的建築工程）與方案或鐵路的營運或維修不相容，可行使建築圖則或建築工程展開的控制的土地範圍  
AREA OF LAND ON WHICH CONTROL OF BUILDING PLANS OR COMMENCEMENT OF BUILDING WORKS (INCLUDING BUILDING WORKS OUTSIDE THE BOUNDARIES OF THE SCHEME) WHICH ARE INCOMPATIBLE WITH THE SCHEME OR THE OPERATION OR MAINTENANCE OF THE RAILWAY MAY BE REQUIRED

接駁線  
MATCH LINE  
FOR CONTINUATION  
SEE DRAWING NO. XRL-P01

米埔  
MAI PO

接駁線  
MATCH LINE  
FOR CONTINUATION  
SEE DRAWING NO. XRL-P03

修訂表  
TABLE OF AMENDMENTS

修訂	日期	繪圖	核對	負責	說明
REV	DATE	BY	SUB	APP	DESCRIPTION

獲准發出  
APPROVED FOR ISSUE

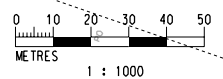
路政署  
鐵路拓展處處長(2)  
GOVERNMENT ENGINEER/  
RAILWAY DEVELOPMENT (2)  
HIGHWAYS DEPARTMENT

發出日期 DATE OF ISSUE

圖則名稱 DRAWING TITLE  
廣深港高速鐵路香港段  
鐵路條例(第519章)  
控制建築圖則及工程展開圖則  
44頁的第2頁  
HONG KONG SECTION OF  
GUANGZHOU - SHENZHEN - HONG KONG  
EXPRESS RAIL LINK  
RAILWAYS ORDINANCE (CHAPTER 519)  
CONTROL OF BUILDING PLANS AND  
COMMENCEMENT OF WORK PLAN SHEET 2 OF 44

圖號 DRAWING NO. XRL - P02

比例 SCALE  
1:1000 (A1)  
或如顯示  
OR  
AS SHOWN



香港特別行政區政府  
THE GOVERNMENT OF THE HONG KONG  
SPECIAL ADMINISTRATIVE REGION

路政署  
HIGHWAYS DEPARTMENT

鐵路拓展處  
RAILWAY DEVELOPMENT OFFICE