

DRAWING NO. XRL/G44/0016/2

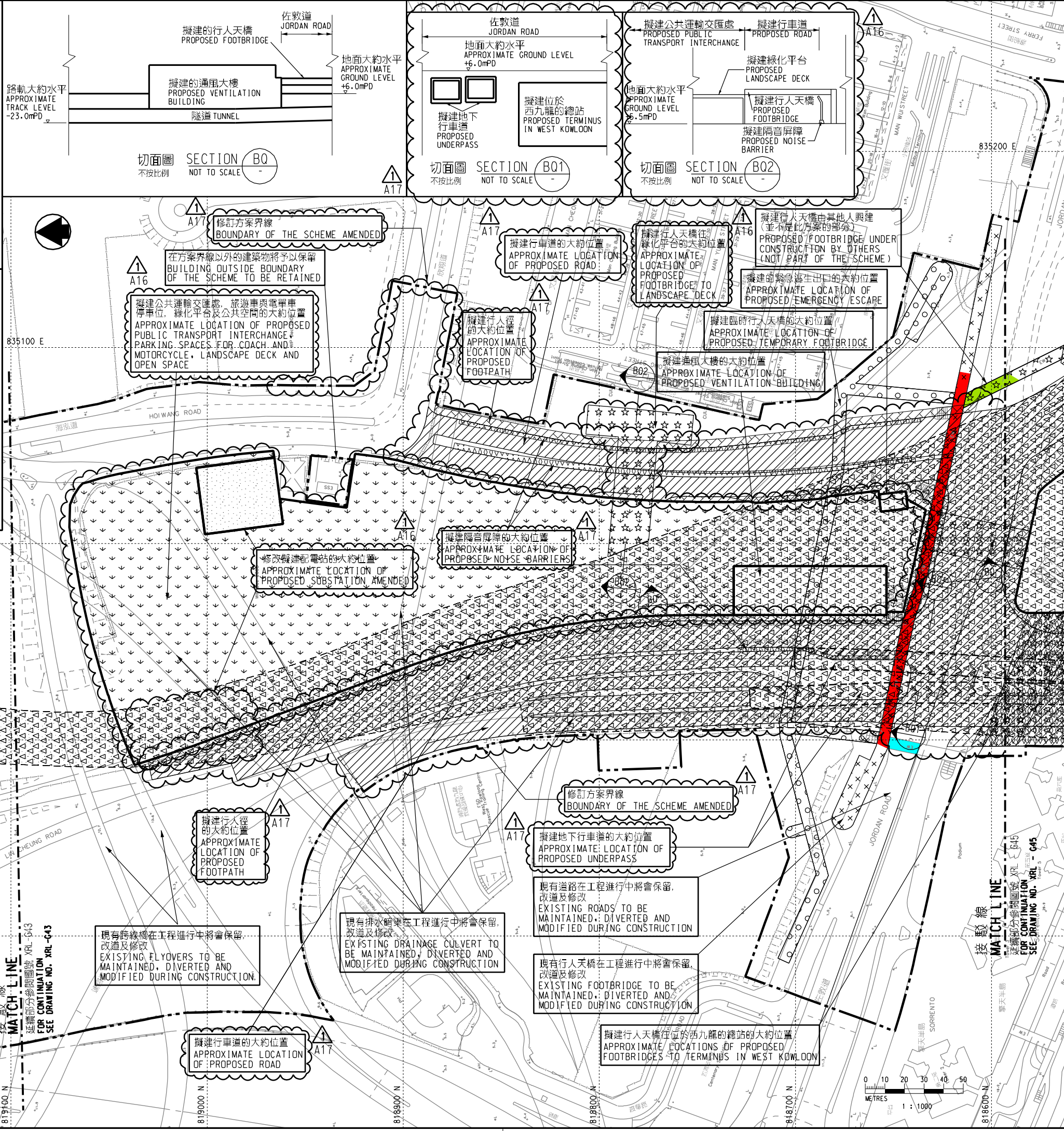
### 一般說明 GENERAL NOTES

1. 剖面圖所示鐵路設施的形狀和輪廓均屬示意性質。 GEOMETRY AND CONFIGURATION OF RAILWAY FACILITIES SHOWN IN SECTIONS ARE SCHEMATIC.
2. 所有在方案界線內的道路(包括行車道、行人徑及露天地方), 無論有否在圖則中顯示, 都有可能永久或暫時封閉或大幅改動。 ALL ROADS INCLUDING CARRIAGEWAYS, FOOTPATHS AND OPEN PLACES WITHIN THE BOUNDARY OF THE SCHEME, WHETHER OR NOT SHOWN ON THE DRAWINGS, MAY BE CLOSED OR ALTERED SUBSTANTIALLY ON A PERMANENT OR TEMPORARY BASIS.
3. 除非圖則中特別註明, 否則在方案界線內, 或與方案界線毗鄰的所有建築物的汽車通道及行人通道, 包括逃生路徑, 將會保留。 UNLESS NOTED OTHERWISE ON THE DRAWINGS, VEHICULAR AND PEDESTRIAN ACCESSES INCLUDING MEANS OF ESCAPE TO AND FROM ALL BUILDINGS WITHIN OR ADJACENT TO THE BOUNDARY OF THE SCHEME ARE TO BE MAINTAINED.
4. 所有水平均為約數, 以米為單位, 並高於香港的主水平基準。 ALL LEVELS ARE APPROXIMATE AND IN METRES ABOVE HONG KONG PRINCIPAL DATUM (MPD).
5. 圖則顯示的建造方法分界線只是大致位置, 有關界線可因應當時的地盤情況而作出改動。 BOUNDARIES SHOWN ON DRAWINGS FOR THE CONSTRUCTION METHODS TO BE CARRIED OUT ARE APPROXIMATE ONLY. THESE BOUNDARIES MAY BE ALTERED ON SITE TO SUIT PREVAILING SITE CONDITIONS.

### 說明 NOTES

此圖根據第XRL-G44號(修改1)圖則制訂, 以紅色標明將暫時封閉的佐敦道北面介乎港鐵柯士甸站與港鐵九龍站之間的行人天橋橋面, 及分別以綠色和藍色標明將暫時封閉的橫跨佐敦道並連接至港鐵柯士甸站和橫跨佐敦道並連接至港鐵九龍站的部分行人天橋橋面。

THIS DRAWING IS PREPARED BASED ON DRAWING NO. XRL-G44 (REVISION 1) AND IS INTENDED TO SHOW THE FOOTBRIDGE ON THE NORTHERN SIDE OF JORDAN ROAD BETWEEN MTR AUSTIN STATION AND MTR KOWLOON STATION (HIGHLIGHTED IN RED) OF WHICH THE FOOTBRIDGE DECK IS TO BE TEMPORARILY CLOSED, AND THE FOOTBRIDGE ACROSS JORDAN ROAD CONNECTING TO MTR AUSTIN STATION AND THE FOOTBRIDGE ACROSS JORDAN ROAD CONNECTING TO MTR KOWLOON STATION (HIGHLIGHTED IN GREEN AND BLUE RESPECTIVELY) OF WHICH PARTS OF THE FOOTBRIDGE DECK ARE TO BE TEMPORARILY CLOSED.



### 圖例 LEGEND

- 方案界線: BOUNDARY OF THE SCHEME
- 擬建的車站及其他鐵路設施: PROPOSED STATION AND OTHER RAILWAY FACILITIES
- 擬建的車站及其他鐵路設施(地下): PROPOSED STATION AND OTHER RAILWAY FACILITIES (UNDERGROUND)
- 擬建的鑽孔或挖掘或鑽爆隧道: PROPOSED BORED / MINED / DRILL AND BLAST TUNNEL
- 擬採用明挖回填法興建的鐵路設施或隧道: PROPOSED RAILWAY FACILITIES/TUNNEL BY CUT-AND-COVER METHOD
- 擬建的地下臨時建築通道: PROPOSED TEMPORARY UNDERGROUND CONSTRUCTION ACCESS
- 可能永久封閉的道路(包括行車道和行人徑): ROADS (INCLUDING CARRIAGEWAY AND FOOTPATH) WHICH MAY BE CLOSED PERMANENTLY
- 擬建的緊急車輛通道及行車道: PROPOSED EMERGENCY VEHICULAR ACCESS AND CARRIAGEWAY
- 擬建的行人徑: PROPOSED FOOTPATH
- 現有的行人天橋將受影響: EXISTING FOOTBRIDGE TO BE AFFECTED
- 擬建的臨時行人天橋/地面行人過路處: PROPOSED TEMPORARY FOOTBRIDGE / AT-GRADE PEDESTRIAN CROSSING
- 擬建的行人天橋: PROPOSED FOOTBRIDGE
- 可能在其上進行填海工程或其他工程的政府前濱或海床: GOVERNMENT FORESHORE OR SEA BED OVER OR UPON WHICH RECLAMATION OR OTHER WORKS MAY BE CARRIED OUT
- 擬建的隔音屏障/隔音罩: PROPOSED NOISE BARRIER / NOISE ENCLOSURE
- 擬建的地下行車道: PROPOSED UNDERPASS
- 擬建的公共運輸交匯處/旅遊車與電車停車位/綠化平台/公共空間: PROPOSED PUBLIC TRANSPORT INTERCHANGE / PARKING SPACES FOR COACH AND MOTORCYCLE / LANDSCAPE DECK / OPEN SPACE
- 圖則修改: DRAWING REVISION
- 修訂參考編號(參考憲報公告): AMENDMENT REFERENCE NUMBER (SEE GAZETTE NOTICE)
- 修訂範圍: AMENDMENT AREA

修訂	日期	繪圖	核對	繪圖	說明
REV	DATE	BY	SUB	APP	DESCRIPTION

**SIGNED** 陳彰華 CHAN CHOI WAI  
 獲准發出 APPROVED FOR ISSUE  
 05/03/2014  
 發出日期 DATE OF ISSUE

圖則名稱 DRAWING TITLE  
**鐵路條例(第519章)**  
**廣深港高速鐵路香港段**  
**暫時封閉佐敦道三段行人天橋**  
 RAILWAYS ORDINANCE (CHAPTER 519)  
 HONG KONG SECTION OF  
 GUANGZHOU - SHENZHEN - HONG KONG  
 EXPRESS RAIL LINK  
 TEMPORARY CLOSURE OF THREE SECTIONS  
 OF A FOOTBRIDGE AT JORDAN ROAD

圖號 DRAWING NO. **XRL/G44/0016/2** 比例 SCALE **1:1000 (A1)**  
 或如顯示 OR AS SHOWN

**香港特別行政區政府**  
 THE GOVERNMENT OF THE HONG KONG  
 SPECIAL ADMINISTRATIVE REGION

**路政署**  
 HIGHWAYS DEPARTMENT

**鐵路拓展處**  
 RAILWAY DEVELOPMENT OFFICE

I:\Program Files\Bentley\BES\Workspace\Users\XRL\_lord-ro-2009Apr-Amendments\_Map.ucf\UserRef\ C:\Program Files\Bentley\BES\Workspace\Projects\unified\pc\3d\XRL\active\005-0095\XRL\G44\_0016\_2\_Signed.dgn