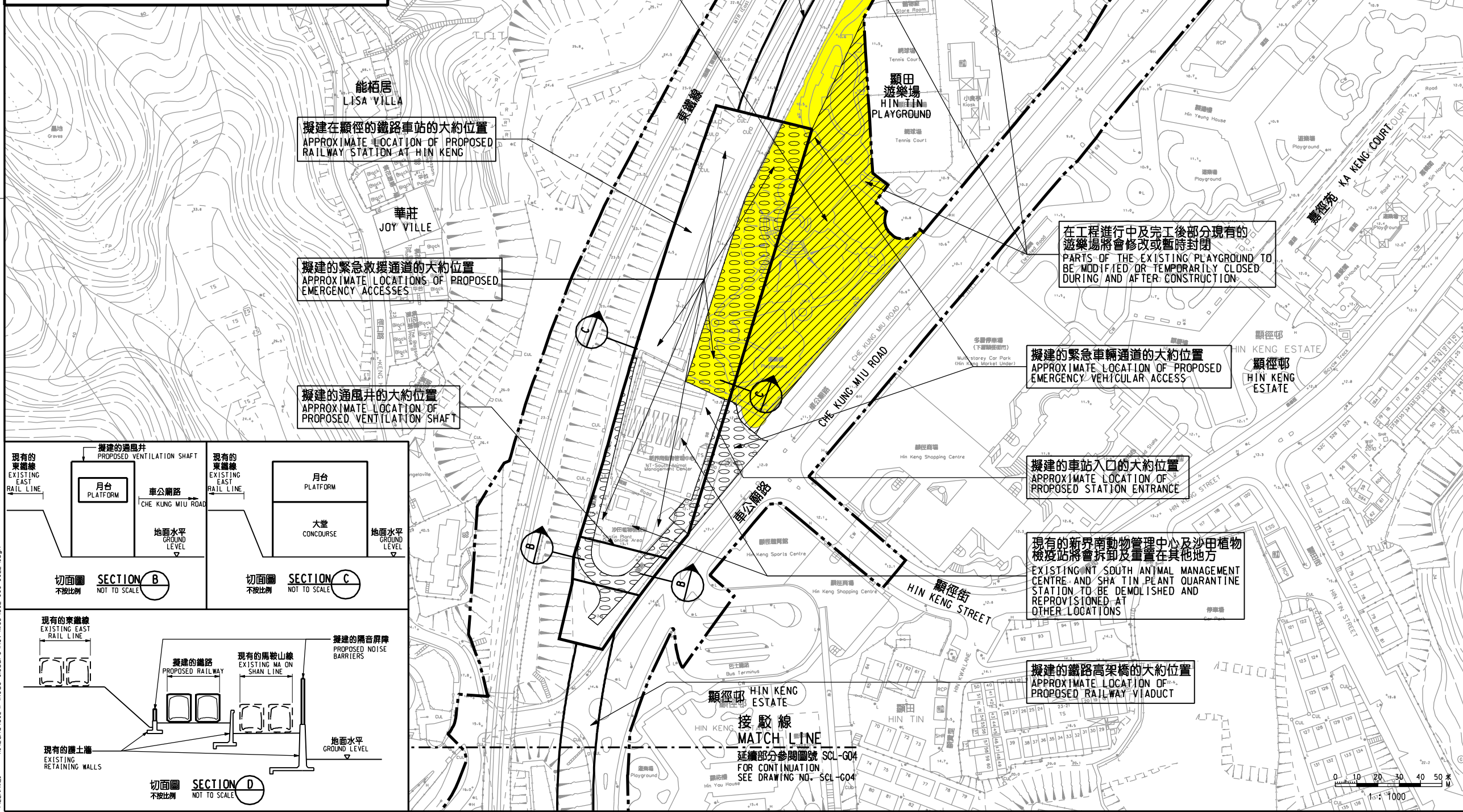


說明 NOTES
 此圖根據第 SCL-G03 號圖則訂制，以黃色標明將暫時封閉的顯田遊樂場部分休憩用地。
 THIS DRAWING IS PREPARED BASED ON DRAWING NO. SCL-G03 AND IS INTENDED TO SHOW PART OF THE OPEN SPACE IN HIN TIN PLAYGROUND (HIGHLIGHTED IN YELLOW) TO BE TEMPORARILY CLOSED.

擬建的隔音屏障的大約位置
 APPROXIMATE LOCATIONS OF PROPOSED NOISE BARRIERS

在工程進行中部分現有顯田遊樂場的設施將會拆卸及完工後重置
 PART OF THE EXISTING FACILITIES AT HIN TIN PLAYGROUND TO BE DEMOLISHED DURING CONSTRUCTION AND REPROVISIONED AFTER CONSTRUCTION.



擬建在顯徑的鐵路車站的大約位置
 APPROXIMATE LOCATION OF PROPOSED RAILWAY STATION AT HIN KENG

擬建的緊急救援通道的大約位置
 APPROXIMATE LOCATIONS OF PROPOSED EMERGENCY ACCESSES

擬建的通風井的大約位置
 APPROXIMATE LOCATION OF PROPOSED VENTILATION SHAFT

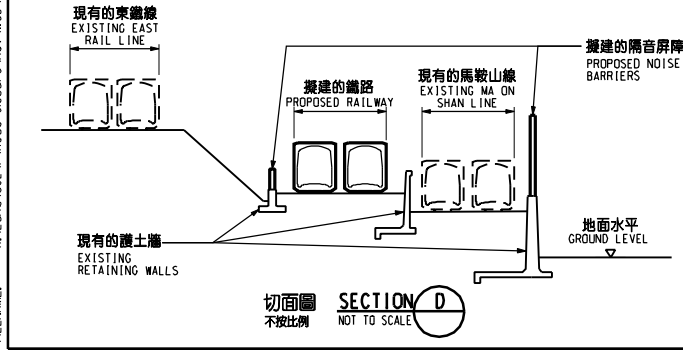
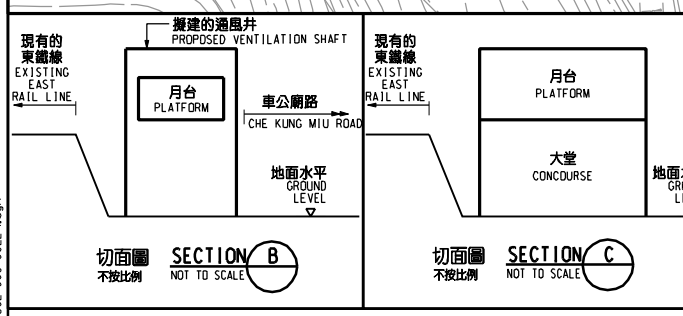
在工程進行中及完工後部分現有的遊樂場將會修改或暫時封閉
 PARTS OF THE EXISTING PLAYGROUND TO BE MODIFIED OR TEMPORARILY CLOSED DURING AND AFTER CONSTRUCTION.

擬建的緊急車輛通道的大約位置
 APPROXIMATE LOCATION OF PROPOSED EMERGENCY VEHICULAR ACCESS

擬建的車站入口的大約位置
 APPROXIMATE LOCATION OF PROPOSED STATION ENTRANCE

現有的新界動物管理中心及沙田植物檢疫站將會拆卸及重置在其他地方
 EXISTING NT SOUTH ANIMAL MANAGEMENT CENTRE AND SHA TIN PLANT QUARANTINE STATION TO BE DEMOLISHED AND REPROVISIONED AT OTHER LOCATIONS

擬建的鐵路高架橋的大約位置
 APPROXIMATE LOCATION OF PROPOSED RAILWAY VIADUCT



接駁線
 MATCH LINE
 延續部分參閱圖號 SCL-G02
 FOR CONTINUATION
 SEE DRAWING NO. SCL-G02

接駁線
 MATCH LINE
 延續部分參閱圖號 SCL-G04
 FOR CONTINUATION
 SEE DRAWING NO. SCL-G04

圖例 LEGEND

- 方案界線 (BOUNDARY OF THE SCHEME)
- 擬建的鐵路車站及其他鐵路設施(地下) (PROPOSED RAILWAY STATION AND OTHER RAILWAY FACILITIES (UNDERGROUND))
- 擬建的車站/車站入口/邊風大樓/邊風井/其他鐵路設施或永久建築物 (PROPOSED RAILWAY STATION/STATION ENTRANCES/VENTILATION BUILDINGS/VENTILATION SHAFTS/OTHER RAILWAY FACILITIES OR PERMANENT STRUCTURES)
- 現有的車站及其他鐵路設施 (EXISTING STATION AND OTHER RAILWAY FACILITIES)
- 擬採用掘地或鑽孔或鑿孔的鐵路設施或隧道(地下) (PROPOSED RAILWAY FACILITIES/TUNNEL BY BORED/MINED/DRILL AND BLAST METHOD (UNDERGROUND))
- 擬採用明挖回填法興建的鐵路設施或隧道(地下) (PROPOSED RAILWAY FACILITIES/TUNNEL BY CUT-AND-COVER METHOD (UNDERGROUND))
- 可能永久封閉的道路(包括行人徑及露天地方) WHICH MAY BE CLOSED PERMANENTLY (INCLUDING CARRIAGEWAYS, FOOTPATHS AND OPEN PLACE)
- 擬設置地盤設施的臨時施工區 (PROPOSED TEMPORARY WORKS AREA FOR SITE FACILITIES)
- 擬於政府前濱或海岸採用掘地或鑿孔的臨時施工區 (可能在其上進行填海工程(非為形成土地)或其他工程) (PROPOSED TEMPORARY WORKS AREA FOR SITE FACILITIES ON GOVERNMENT FORESHORE OR SEABED (OVER OR UPON WHICH RECLAMATION (NOT FOR THE PURPOSE OF FORMING LAND) OR OTHER WORKS MAY BE CARRIED OUT))
- 擬建的行人天橋/扶手電梯/升降機/樓梯 (PROPOSED FOOTBRIDGE/ESCALATOR/LIFT/STAIRCASE)
- 擬建的有蓋行人通道 (PROPOSED COVERED WALKWAY)
- 擬於政府前濱或海岸採用明挖回填法興建的鐵路設施或隧道 (可能在其上進行填海工程(非為形成土地)或其他工程) (PROPOSED RAILWAY FACILITIES/TUNNEL BY CUT-AND-COVER METHOD ON GOVERNMENT FORESHORE OR SEABED (OVER OR UPON WHICH TEMPORARY RECLAMATION FOR THE PURPOSE OF FORMING TEMPORARY LAND) OR OTHER WORKS MAY BE CARRIED OUT))
- 擬於政府前濱或海岸採用掘地或鑿孔的鐵路設施或隧道(包括保土層/護面或石) (PROPOSED RAILWAY FACILITIES/TUNNELS (INCLUDING PROTECTION LAYER/ROCK ARMOUR) BY IMMERSED TUBE METHOD ON GOVERNMENT FORESHORE OR SEABED (OVER OR UPON WHICH RECLAMATION (NOT FOR THE PURPOSE OF FORMING LAND) OR OTHER WORKS MAY BE CARRIED OUT))
- 擬建於保護結構的鐵路設施/隧道(地下) (PROPOSED RAILWAY FACILITIES/TUNNELS (UNDERGROUND) AT PROTECTION STRUCTURES)
- 擬建於沙田至中環線及另一項正在策劃的鐵路項目(下稱「另一項鐵路項目」)使用的隧道(地下)/車站/車站大堂/車站入口/邊風大樓/邊風井/其他鐵路設施或永久建築物(下稱「設施」)及設施的永久封閉(包括另一項鐵路項目) (PROPOSED RAILWAY TUNNEL (UNDERGROUND)/RAILWAY STATION/STATION CONCOURSE/STATION ENTRANCES/VENTILATION BUILDINGS/VENTILATION SHAFTS/OTHER RAILWAY FACILITIES OR PERMANENT STRUCTURES (HEREAFTER REFERRED TO AS "FACILITIES") FOR SHATTIN CENTRAL LINK AND ANOTHER RAILWAY PROJECT UNDER PLANNING (HEREAFTER REFERRED TO AS "ANOTHER RAILWAY PROJECT"). THE LAYOUT OF THE FACILITIES IS GAZETTED UNDER ANOTHER RAILWAY PROJECT
- 受影響的政府前濱或海岸的大約範圍 (APPROXIMATE EXTENT OF AFFECTED GOVERNMENT FORESHORE OR SEABED)

一般說明 GENERAL NOTES
 1. 有關一般說明參閱圖號 SCL-G01.
 FOR GENERAL NOTES, REFER TO DRAWING NO. SCL-G01.

修訂表
 TABLE OF AMENDMENTS

修訂號	日期	繪圖員	核對員	批准人	說明
REV	DATE	BY	SUB	APP	DESCRIPTION

SIGNED

核准發出
 APPROVED FOR ISSUE

19/6/2013

發出日期 DATE OF ISSUE

楊港生 YEUNG KONG SANG
 總工程師/鐵路發展(1-3)
 CHIEF ENGINEER/
 RAILWAY DEVELOPMENT (1-3)
 HIGHWAYS DEPARTMENT

圖則名稱 DRAWING TITLE
鐵路條例(第519章)
沙田至中環線
暫時封閉顯田遊樂場的部分休憩用地

RAILWAYS ORDINANCE (CHAPTER 519)
 SHATTIN TO CENTRAL LINK
 TEMPORARY CLOSURE OF PART OF THE OPEN SPACE IN HIN TIN PLAYGROUND

圖號 DRAWING NO. SCL/G03/0022/1 比例 SCALE 1:1000 (A1) 或如顯示 OR AS SHOWN

香港特別行政區政府
 THE GOVERNMENT OF THE HONG KONG
 SPECIAL ADMINISTRATIVE REGION

路政署
 HIGHWAYS DEPARTMENT

鐵路拓展處
 RAILWAY DEVELOPMENT OFFICE

Plot: 19/06/2013 13:57:06
 File: X:\Lands\SC\LA\Road Closure\Rev\Map\SCL-G03-0022-1.dgn