

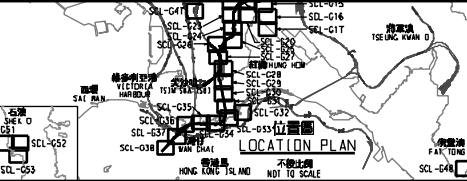
說明 NOTES

此圖根據第 SCL-G11 號(修改)圖則訂訂, 以深紫色標明將暫時封閉連接彩虹道和龍翔道的部分樓梯及行人路, 以及綠色標明將暫時封閉的部分龍翔道路段。

THIS DRAWING IS PREPARED BASED ON DRAWING NO. SCL-G11 (REVISION 1) AND IS INTENDED TO SHOW THE TEMPORARY PARTIAL CLOSURE OF THE STAIRCASE AND FOOTPATH CONNECTING CHOI HUNG ROAD AND LUNG CHEUNG ROAD (HIGHLIGHTED IN DARK PURPLE), AND THE TEMPORARY PARTIAL CLOSURE OF THE SECTION OF LUNG CHEUNG ROAD (HIGHLIGHTED IN GREEN).

修訂現有的鐵路車站入口、通風井及緊急救援通道的佈局及方案界線
LAYOUT AND APPROXIMATE LOCATION OF PROPOSED RAILWAY STATION ENTRANCE, VENTILATION SHAFT, LIFT AND EMERGENCY ACCESS

修訂擬採用的鑽控或挖掘或鑽爆與鑽路隧道的佈局及方案界線
LAYOUT AND APPROXIMATE LOCATION OF PROPOSED RAILWAY TUNNEL BY BORED/MINED/DRILL AND BLAST METHOD AND BOUNDARY OF THE SCHEME AMENDED



擬建的通風井及緊急救援通道的大約位置
現有的車站入口將會保留及修改
APPROXIMATE LOCATION OF PROPOSED VENTILATION SHAFT AND EMERGENCY ACCESS EXISTING STATION ENTRANCE TO BE MAINTAINED AND MODIFIED

擬建的升降機的大約位置
APPROXIMATE LOCATION OF PROPOSED LIFT

修訂擬採用的鑽控或挖掘或鑽爆與鑽路隧道的佈局及方案界線
LAYOUT OF PROPOSED RAILWAY TUNNEL BY BORED/MINED/DRILL AND BLAST METHOD AND BOUNDARY OF THE SCHEME AMENDED

在工程進行中現有的行人徑將會修改或改道並在完工後重置
EXISTING FOOTPATH TO BE MODIFIED OR DIVERTED DURING CONSTRUCTION AND REPROVISIONED AFTER CONSTRUCTION

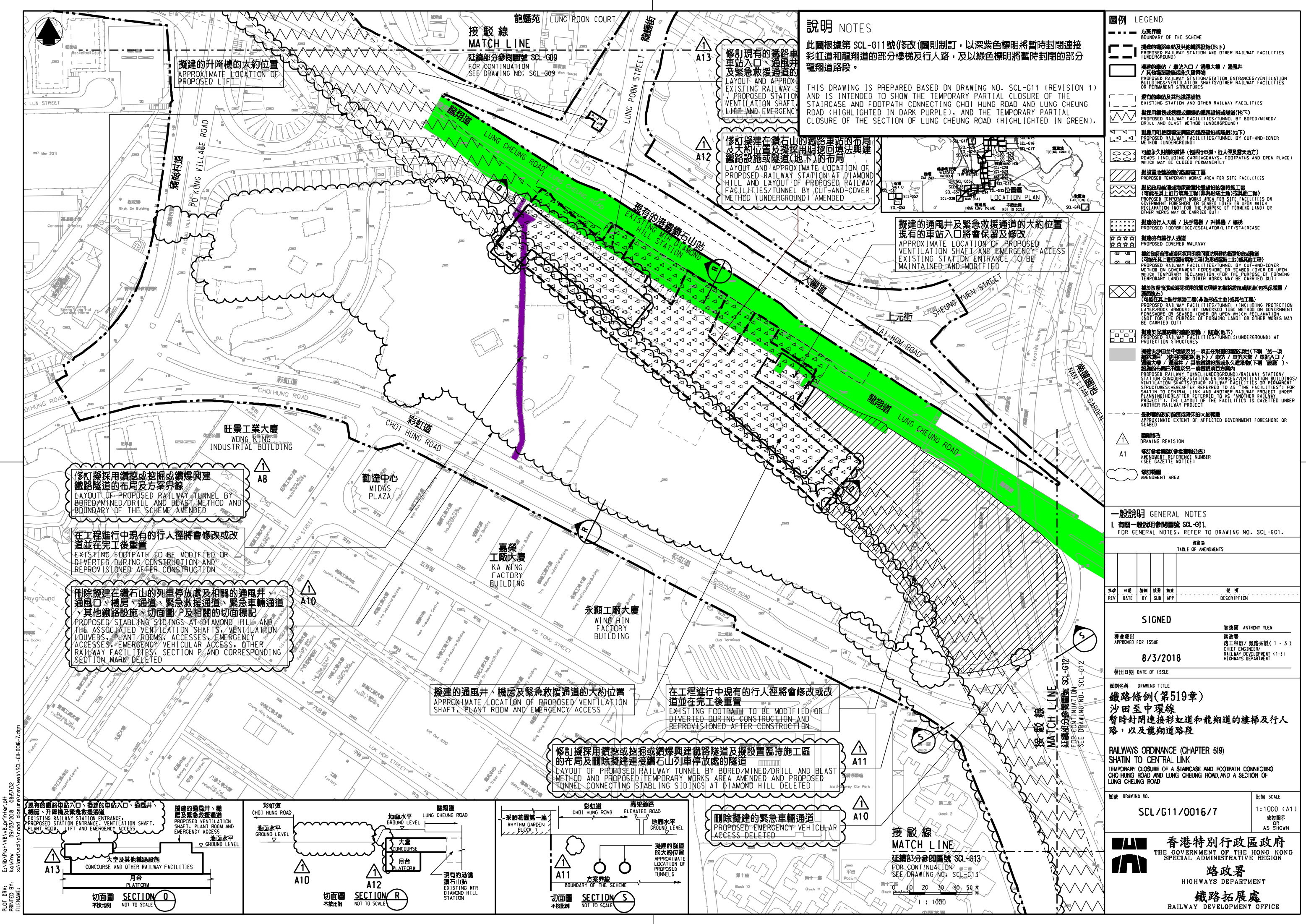
刪除擬採用的鑽控或挖掘或鑽爆與鑽路隧道的佈局及方案界線
PROPOSED STABLING SIDINGS AT DIAMOND HILL AND THE ASSOCIATED VENTILATION SHAFTS, VENTILATION LOUVERS, PLANT ROOMS, ACCESSES, EMERGENCY ACCESSES, EMERGENCY VEHICULAR ACCESS, OTHER RAILWAY FACILITIES, SECTION P AND CORRESPONDING SECTION MARK DELETED

擬建的通風井、機房及緊急救援通道的大約位置
APPROXIMATE LOCATION OF PROPOSED VENTILATION SHAFT, PLANT ROOM AND EMERGENCY ACCESS

在工程進行中現有的行人徑將會修改或改道並在完工後重置
EXISTING FOOTPATH TO BE MODIFIED OR DIVERTED DURING CONSTRUCTION AND REPROVISIONED AFTER CONSTRUCTION

修訂擬採用的鑽控或挖掘或鑽爆與鑽路隧道的佈局及方案界線
LAYOUT OF PROPOSED RAILWAY TUNNEL BY BORED/MINED/DRILL AND BLAST METHOD AND PROPOSED TEMPORARY WORKS AREA AMENDED AND PROPOSED TUNNEL CONNECTING STABLING SIDINGS AT DIAMOND HILL DELETED

刪除擬建的緊急車輛通道
PROPOSED EMERGENCY VEHICULAR ACCESS DELETED



Plot No. 100...
Printed by: KALVIN...
Date: 08/3/2018

圖例 LEGEND

- 方案界線 BOUNDARY OF THE SCHEME
- 擬建的鐵路車站及其他鐵路設施(地下) PROPOSED RAILWAY STATION AND OTHER RAILWAY FACILITIES (UNDERGROUND)
- 擬建的車站/車站入口/通風井/機房/其他鐵路設施或永久建築物 PROPOSED RAILWAY STATION/STATION ENTRANCES/VENTILATION BUILDINGS/VENTILATION SHAFTS/OTHER RAILWAY FACILITIES OR PERMANENT STRUCTURES
- 現有的車站及其他鐵路設施 EXISTING STATION AND OTHER RAILWAY FACILITIES
- 擬採用鑽控或挖掘或鑽爆與鑽路隧道的佈局(地下) PROPOSED RAILWAY TUNNEL BY BORED/MINED/DRILL AND BLAST METHOD (UNDERGROUND)
- 擬採用明挖或鑽控或挖掘或鑽爆與鑽路隧道的佈局(地下) PROPOSED RAILWAY FACILITIES/TUNNEL BY CUT-AND-COVER METHOD (UNDERGROUND)
- 可能永久封閉的樓梯(包括行人徑及露天地方) WHICH MAY BE CLOSED PERMANENTLY
- 擬設置地盤的臨時工程區 PROPOSED TEMPORARY WORKS AREA FOR SITE FACILITIES
- 擬採用的鑽控或挖掘或鑽爆與鑽路隧道的佈局(地下) PROPOSED RAILWAY TUNNEL BY BORED/MINED/DRILL AND BLAST METHOD (UNDERGROUND)
- 擬採用的明挖或鑽控或挖掘或鑽爆與鑽路隧道的佈局(地下) PROPOSED RAILWAY FACILITIES/TUNNEL BY CUT-AND-COVER METHOD (UNDERGROUND)
- 擬採用的行人天橋/扶手电梯/升降機/樓梯 PROPOSED FOOTBRIDGE/ESCALATOR/LIFT/STAIRCASE
- 擬採用的行人徑 PROPOSED COVERED WALKWAY
- 擬採用的明挖或鑽控或挖掘或鑽爆與鑽路隧道的佈局(地下) PROPOSED RAILWAY FACILITIES/TUNNEL BY CUT-AND-COVER METHOD (UNDERGROUND)
- 擬採用的鑽控或挖掘或鑽爆與鑽路隧道的佈局(地下) PROPOSED RAILWAY TUNNEL BY BORED/MINED/DRILL AND BLAST METHOD (UNDERGROUND)
- 擬採用的明挖或鑽控或挖掘或鑽爆與鑽路隧道的佈局(地下) PROPOSED RAILWAY FACILITIES/TUNNEL BY CUT-AND-COVER METHOD (UNDERGROUND)
- 擬採用的鑽控或挖掘或鑽爆與鑽路隧道的佈局(地下) PROPOSED RAILWAY TUNNEL BY BORED/MINED/DRILL AND BLAST METHOD (UNDERGROUND)
- 擬採用的明挖或鑽控或挖掘或鑽爆與鑽路隧道的佈局(地下) PROPOSED RAILWAY FACILITIES/TUNNEL BY CUT-AND-COVER METHOD (UNDERGROUND)
- 擬採用的鑽控或挖掘或鑽爆與鑽路隧道的佈局(地下) PROPOSED RAILWAY TUNNEL BY BORED/MINED/DRILL AND BLAST METHOD (UNDERGROUND)
- 擬採用的明挖或鑽控或挖掘或鑽爆與鑽路隧道的佈局(地下) PROPOSED RAILWAY FACILITIES/TUNNEL BY CUT-AND-COVER METHOD (UNDERGROUND)
- 擬採用的鑽控或挖掘或鑽爆與鑽路隧道的佈局(地下) PROPOSED RAILWAY TUNNEL BY BORED/MINED/DRILL AND BLAST METHOD (UNDERGROUND)
- 擬採用的明挖或鑽控或挖掘或鑽爆與鑽路隧道的佈局(地下) PROPOSED RAILWAY FACILITIES/TUNNEL BY CUT-AND-COVER METHOD (UNDERGROUND)

一般說明 GENERAL NOTES

1. 有關一般說明參閱圖號 SCL-G01 FOR GENERAL NOTES, REFER TO DRAWING NO. SCL-G01.

修訂 REV	日期 DATE	修訂 BY	修訂 SUB	修訂 APP	說明 DESCRIPTION

SIGNED
發行人 APPROVED FOR ISSUE: 麥傑華 ANTHONY YUEN
日期 DATE OF ISSUE: 8/3/2018
職銜 POSITION: 總工程師/鐵路拓展(1-3) CHIEF ENGINEER/RAILWAY DEVELOPMENT (1-3)
部門 DEPARTMENT: 鐵路發展處(1-3) HIGHWAYS DEPARTMENT

圖別名稱 DRAWING TITLE
鐵路條例(第519章)
沙田至中環線
暫時封閉連接彩虹道和龍翔道的樓梯及行人路, 以及龍翔道路段
RAILWAYS ORDINANCE (CHAPTER 519)
TEMPORARY CLOSURE OF A STAIRCASE AND FOOTPATH CONNECTING CHOI HUNG ROAD AND LUNG CHEUNG ROAD, AND A SECTION OF LUNG CHEUNG ROAD

圖號 DRAWING NO. SCL/G11/0016/7 比例 SCALE 1:1000 (A1)
香港特別行政區政府 THE GOVERNMENT OF THE HONG KONG SPECIAL ADMINISTRATIVE REGION
路政署 HIGHWAYS DEPARTMENT
鐵路拓展處 RAILWAY DEVELOPMENT OFFICE

