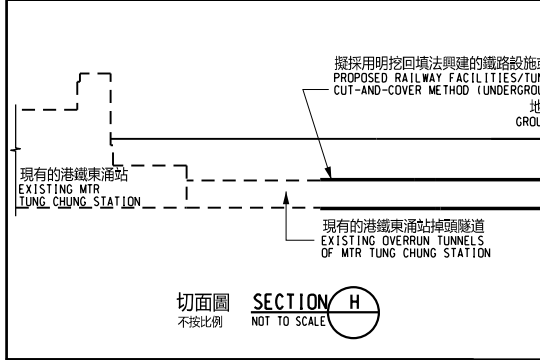
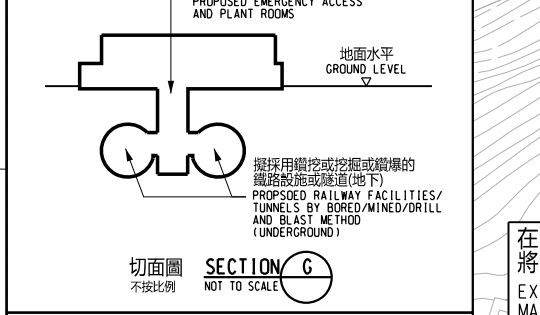


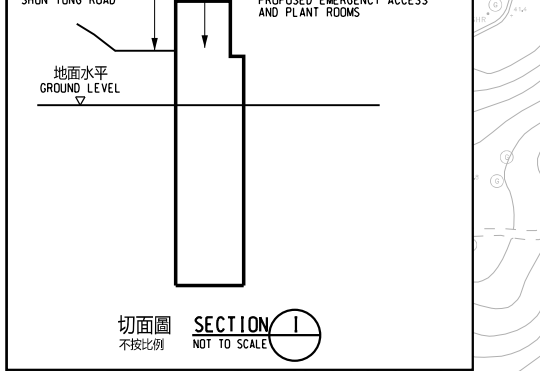
位置圖 LOCATION PLAN
不按比例 NOT TO SCALE



切面圖 SECTION H
不按比例 NOT TO SCALE



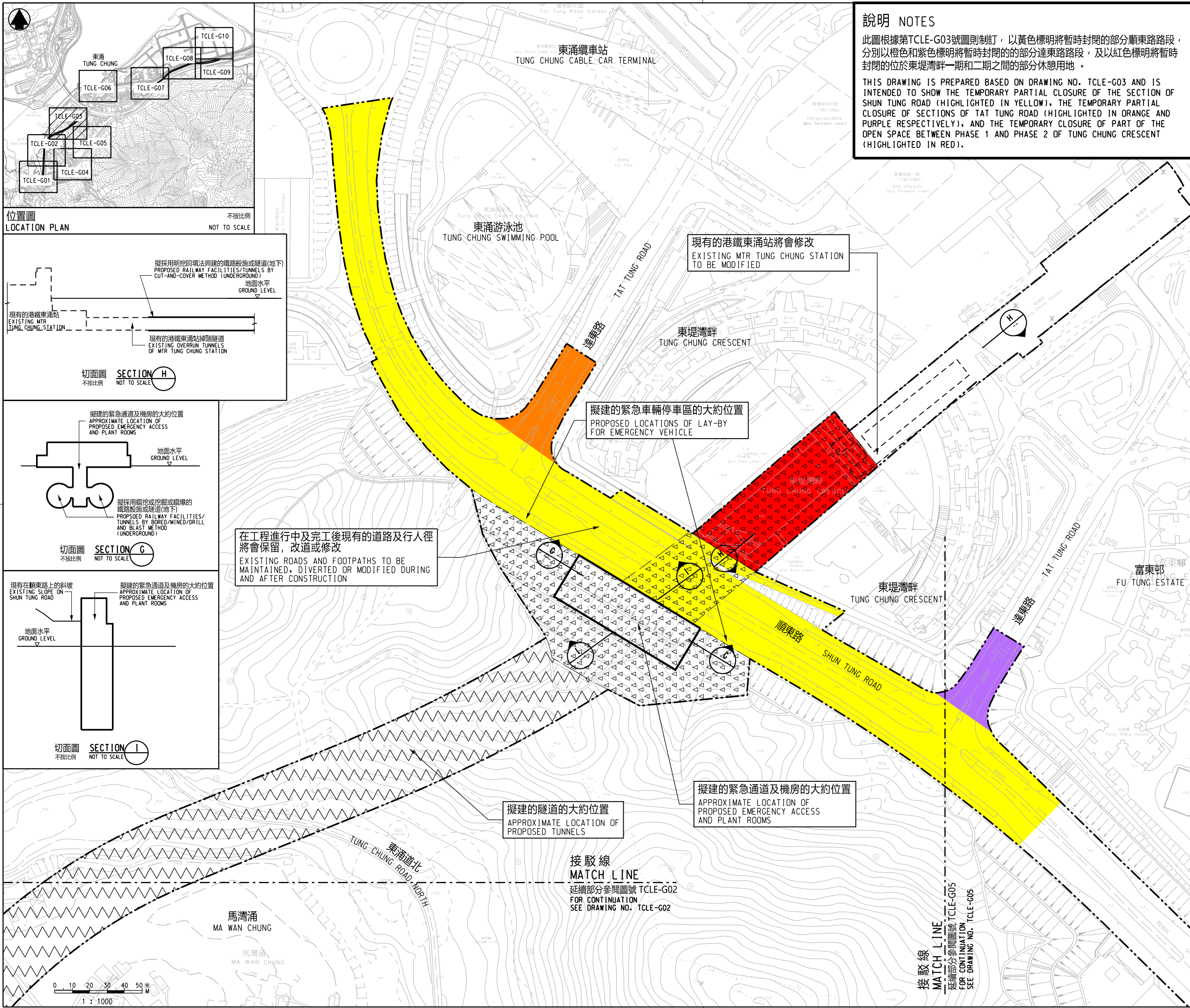
切面圖 SECTION G
不按比例 NOT TO SCALE



切面圖 SECTION I
不按比例 NOT TO SCALE

說明 NOTES
此圖根據第TCLE-G03號圖則訂，以黃色標明將暫時封閉的部分順東路路段，分別以橙色和紫色標明將暫時封閉的部分達東路路段，及以紅色標明將暫時封閉的位於東堤灣畔一期和二期之間的部分休憩用地。
THIS DRAWING IS PREPARED BASED ON DRAWING NO. TCLE-G03 AND IS INTENDED TO SHOW THE TEMPORARY PARTIAL CLOSURE OF THE SECTION OF SHUN TUNG ROAD (HIGHLIGHTED IN YELLOW), THE TEMPORARY PARTIAL CLOSURE OF SECTIONS OF TAT TUNG ROAD (HIGHLIGHTED IN ORANGE AND PURPLE RESPECTIVELY), AND THE TEMPORARY CLOSURE OF PART OF THE OPEN SPACE BETWEEN PHASE 1 AND PHASE 2 OF TUNG CHUNG CRESCENT (HIGHLIGHTED IN RED).

- 圖例 LEGEND :**
- 方案界線 BOUNDARY OF THE SCHEME
 - 擬建的鐵路車站及其他鐵路設施(地下) PROPOSED RAILWAY STATION AND OTHER RAILWAY FACILITIES (UNDERGROUND)
 - 擬建的車站/車站入口/通風大樓/通風井/其他鐵路設施或永久建築物 PROPOSED RAILWAY STATION/STATION ENTRANCES/VENTILATION BUILDINGS/VENTILATION SHAFTS/OTHER RAILWAY FACILITIES OR PERMANENT STRUCTURES
 - 現有的車站及其他鐵路設施 EXISTING STATION AND OTHER RAILWAY FACILITIES
 - 擬採用鑽挖或掘鑽的鐵路設施或隧道(地下) PROPOSED RAILWAY FACILITIES/TUNNELS BY BORED/MINED/DRILL AND BLAST METHOD (UNDERGROUND)
 - 擬採用明挖回填法興建的鐵路設施或隧道(地下) PROPOSED RAILWAY FACILITIES/TUNNELS BY CUT-AND-COVER METHOD (UNDERGROUND)
 - 擬設置地盤設施的臨時施工區 PROPOSED TEMPORARY WORKS AREA FOR SITE FACILITIES
 - 可能在其上進行填海工程或其他工程的政府前濱或海床 RECLAMATION OR OTHER WORKS MAY BE CARRIED OUT
 - 擬進行修改的現有東涌線 PROPOSED MODIFICATION WORKS OF THE EXISTING TUNG CHUNG LINE
 - 現有的行人天橋斜道將被拆除 EXISTING FOOTBRIDGE RAMP TO BE DEMOLISHED



現有的港鐵東涌站將會修改
EXISTING MTR TUNG CHUNG STATION TO BE MODIFIED

擬建的緊急車輛停車區的大約位置
PROPOSED LOCATIONS OF LAY-BY FOR EMERGENCY VEHICLE

在工程進行中及完工後現有的道路及行人徑將會保留，改道或修改
EXISTING ROADS AND FOOTPATHS TO BE MAINTAINED, DIVERTED OR MODIFIED DURING AND AFTER CONSTRUCTION

擬建的隧道的大約位置
APPROXIMATE LOCATION OF PROPOSED TUNNELS

擬建的緊急通道及機房的大約位置
APPROXIMATE LOCATION OF PROPOSED EMERGENCY ACCESS AND PLANT ROOMS

接駁線
MATCH LINE
延續部分參閱圖號 TCLE-G02
FOR CONTINUATION
SEE DRAWING NO. TCLE-G02

接駁線
MATCH LINE
延續部分參閱圖號 TCLE-G05
FOR CONTINUATION
SEE DRAWING NO. TCLE-G05

一般說明 GENERAL NOTES :
1. 有關一般說明參閱圖號TCLE-G01.
FOR GENERAL NOTES, REFER TO DRAWING NO. TCLE-G01.

修訂表
TABLE OF AMENDMENTS

| 修改 REV | 日期 DATE | 繪圖 BY | 核對 SUB | 負責 APP | 說明 DESCRIPTION |
|-----------|------------|----------|-----------|-----------|-------------------|
| | | | | | |

SIGNED
溫健雄 MAN KIN HUNG
21/4/2023
發出日期 DATE OF ISSUE

圖則名稱 DRAWING TITLE
**鐵路條例(第519章)
東涌線延線**
暫時封閉順東路和達東路路段，以及位於東堤灣畔一期和二期之間的部分休憩用地
RAILWAYS ORDINANCE (CHAPTER 519)
TUNG CHUNG LINE EXTENSION
TEMPORARY CLOSURE OF SECTIONS OF SHUN TUNG ROAD AND TAT TUNG ROAD, AND PART OF THE OPEN SPACE BETWEEN PHASE 1 AND PHASE 2 OF TUNG CHUNG CRESCENT

圖號 DRAWING NO.
TCLE/G03/0001/1
比例 SCALE
1:1000 (A1)
或如圖示
AS SHOWN

