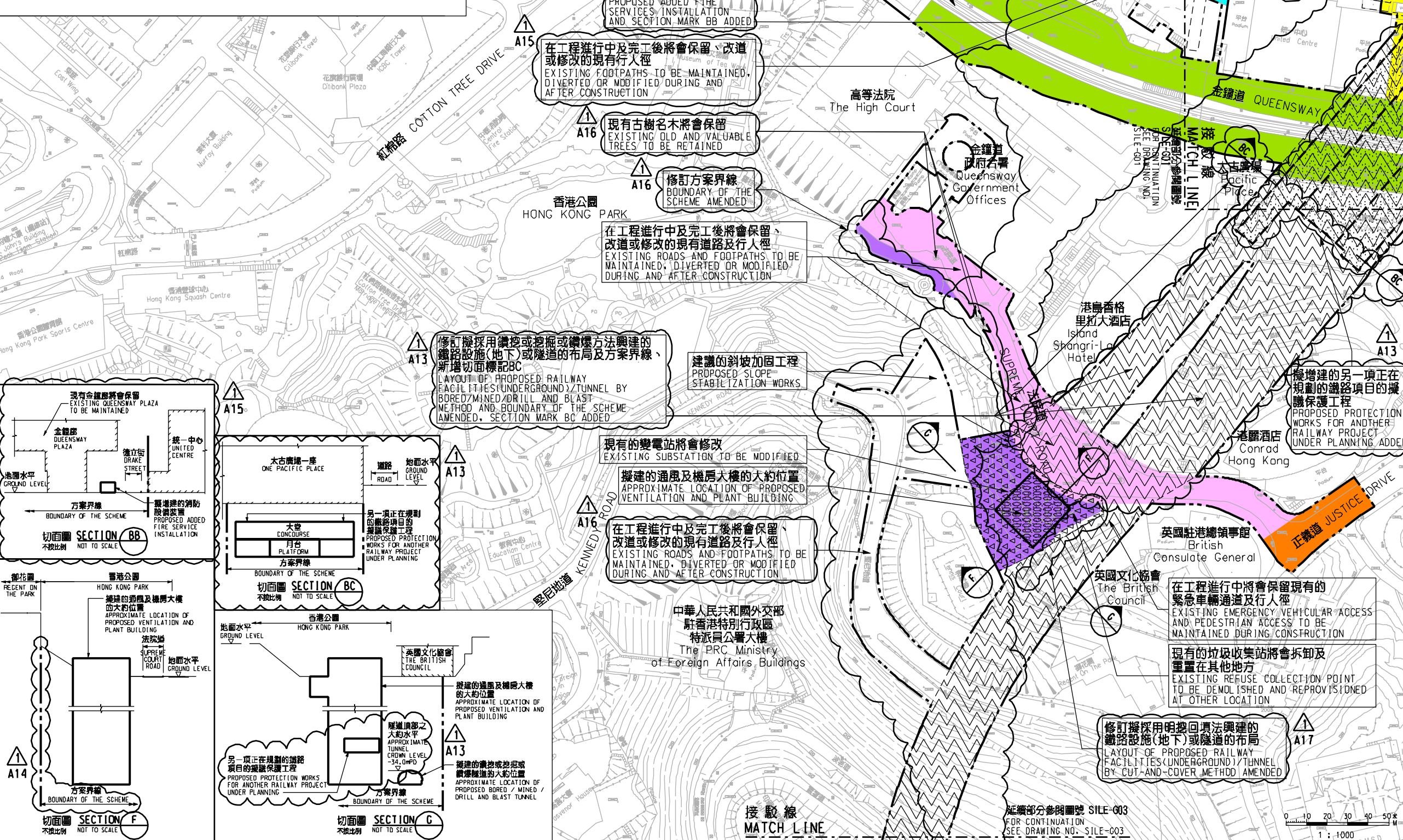


圖例 LEGEND

- 方案界線
BOUNDARY OF THE SCHEME
- 擬建的車站及其他鐵路設施
PROPOSED STATION AND OTHER RAILWAY FACILITIES
- 擬建的車站及其他鐵路設施(地下)
PROPOSED STATION AND OTHER RAILWAY FACILITIES (UNDERGROUND)
- 擬採用鑽挖或掘掘或鑽爆的鐵路設施或隧道(地下)
PROPOSED RAILWAY FACILITIES/TUNNEL BY BORED / MINED / DRILL AND BLAST METHOD (UNDERGROUND)
- 擬採用明挖回填法興建的鐵路設施或隧道(地下)
PROPOSED RAILWAY FACILITIES/TUNNEL BY CUT-AND-COVER METHOD (UNDERGROUND)
- 可能永久封閉的道路(包括行車道和行人徑)
ROADS (INCLUDING CARRIAGEWAY AND FOOTPATH) WHICH MAY BE CLOSED PERMANENTLY
- 擬建的鐵路橋樑
PROPOSED RAILWAY VIADUCT
- 現有的行人天橋將受影響
EXISTING FOOTBRIDGE TO BE AFFECTED
- 擬建的臨時行人天橋/地面行人過路處
PROPOSED TEMPORARY FOOTBRIDGE / AT-GRADE PEDESTRIAN CROSSING
- 擬建的行人天橋
PROPOSED FOOTBRIDGE

- 可能在其上進行填海工程或其他工程的政府前灘或海床
GOVERNMENT FORE SHORE OR SEABED OVER OR UPON WHICH RECLAMATION OR OTHER WORKS MAY BE CARRIED OUT
- 現有的車站及其他鐵路設施
EXISTING STATION AND OTHER RAILWAY FACILITIES
- 擬建的臨時架空輸送帶系統
PROPOSED TEMPORARY OVERHEAD CONVEYANCE SYSTEM
- 擬建的鐵路隧道入口
PROPOSED RAILWAY TUNNEL APPROACH
- 以主水平基準為依據之擬建鐵路軌道水平(米)
PROPOSED APPROXIMATE TRACK LEVEL IN m P.D.
- 圖則修改
DRAWING REVISION
- 修訂參考編號(參考憲報公告)
AMENDMENT REFERENCE NUMBER (SEE GAZETTE NOTICE)
- 修訂範圍
AMENDMENT AREA



說明 NOTES

此圖根據第 SILE-G02 號 (修改) 圖則制訂, 以紫色標明香港公園將暫時封閉的部分休憩用地和毗鄰的行人徑, 及分別以黃色、藍色、綠色、粉紅色和橙色標明樂禮街、德立街、金鐘道、法院道和正義道將暫時封閉的部分行車道及行人路路段的路面。

THIS DRAWING IS PREPARED BASED ON DRAWING NO. SILE-G02 (REVISION 1) AND IS INTENDED TO SHOW PARTS OF THE OPEN SPACE IN HONG KONG PARK AND THE ADJACENT FOOTPATH (HIGHLIGHTED IN PURPLE) TO BE TEMPORARILY CLOSED, AND THE SECTIONS OF RODNEY STREET, DRAKE STREET, QUEENSWAY, SUPREME COURT ROAD AND JUSTICE DRIVE (HIGHLIGHTED IN YELLOW, BLUE, GREEN, PINK AND ORANGE RESPECTIVELY) OF WHICH PARTS OF THE CARRIAGEWAY AND FOOTPATH WIDTHS ARE TO BE TEMPORARILY CLOSED.

一般說明 GENERAL NOTES

1. 有關一般說明參閱圖號 SILE - G01.
FOR GENERAL NOTES, REFER TO DRAWING NO. SILE - G01.

修訂表
TABLE OF AMENDMENTS

修訂號	日期	修訂	修訂	修訂	說明
REV	DATE	BY	SUB	APP	DESCRIPTION

SIGNED

核准發出 APPROVED FOR ISSUE	伍德榮 NG TAK WING
17/5/2011	总工程师 / 鐵路拓展處 1-1 發行者 CHIEF ENGINEER / RAILWAY DEVELOPMENT 1-1 HIGHWAYS DEPARTMENT
發出日期 DATE OF ISSUE	

鐵路條例 (第519章)
南港島綫 (東段)
暫時封閉部分香港公園的休憩用地和毗鄰的行人徑, 及部分樂禮街、德立街、金鐘道、法院道和正義道

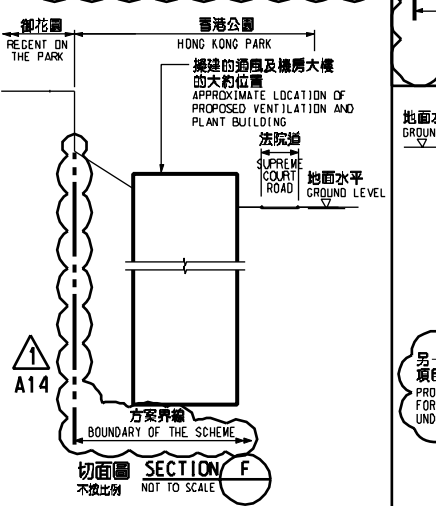
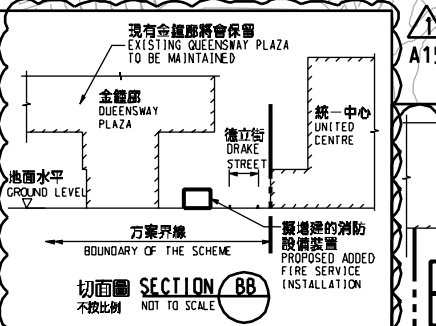
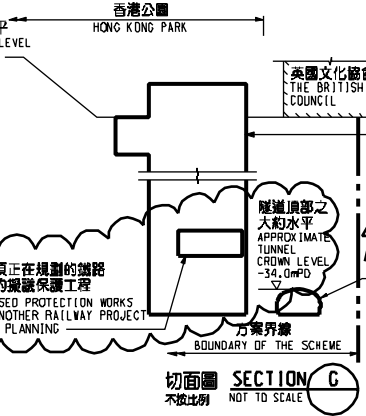
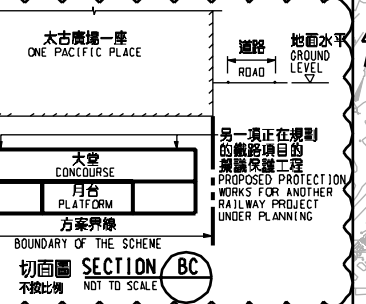
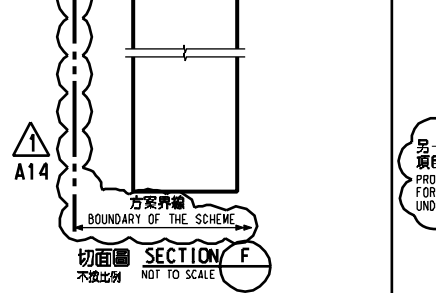
RAILWAYS ORDINANCE (CHAPTER 519)
SOUTH ISLAND LINE (EAST)
TEMPORARY CLOSURE OF PARTS OF THE OPEN SPACE IN HONG KONG PARK AND THE ADJACENT FOOTPATH AND SECTIONS OF RODNEY STREET, DRAKE STREET, QUEENSWAY, SUPREME COURT ROAD AND JUSTICE DRIVE

圖號 DRAWING NO. SILE/G02/0001/1
比例 SCALE 1:1000 (A1)
縮印顯示 DR AS SHOWN

香港特別行政區政府
THE GOVERNMENT OF THE HONG KONG SPECIAL ADMINISTRATIVE REGION

路政署
HIGHWAYS DEPARTMENT

鐵路拓展處
RAILWAY DEVELOPMENT OFFICE



Plot No: SILE-G02-0001-1
Date: 17/05/2011
Printed by: [Name]
Scale: 1:1000 (A1)