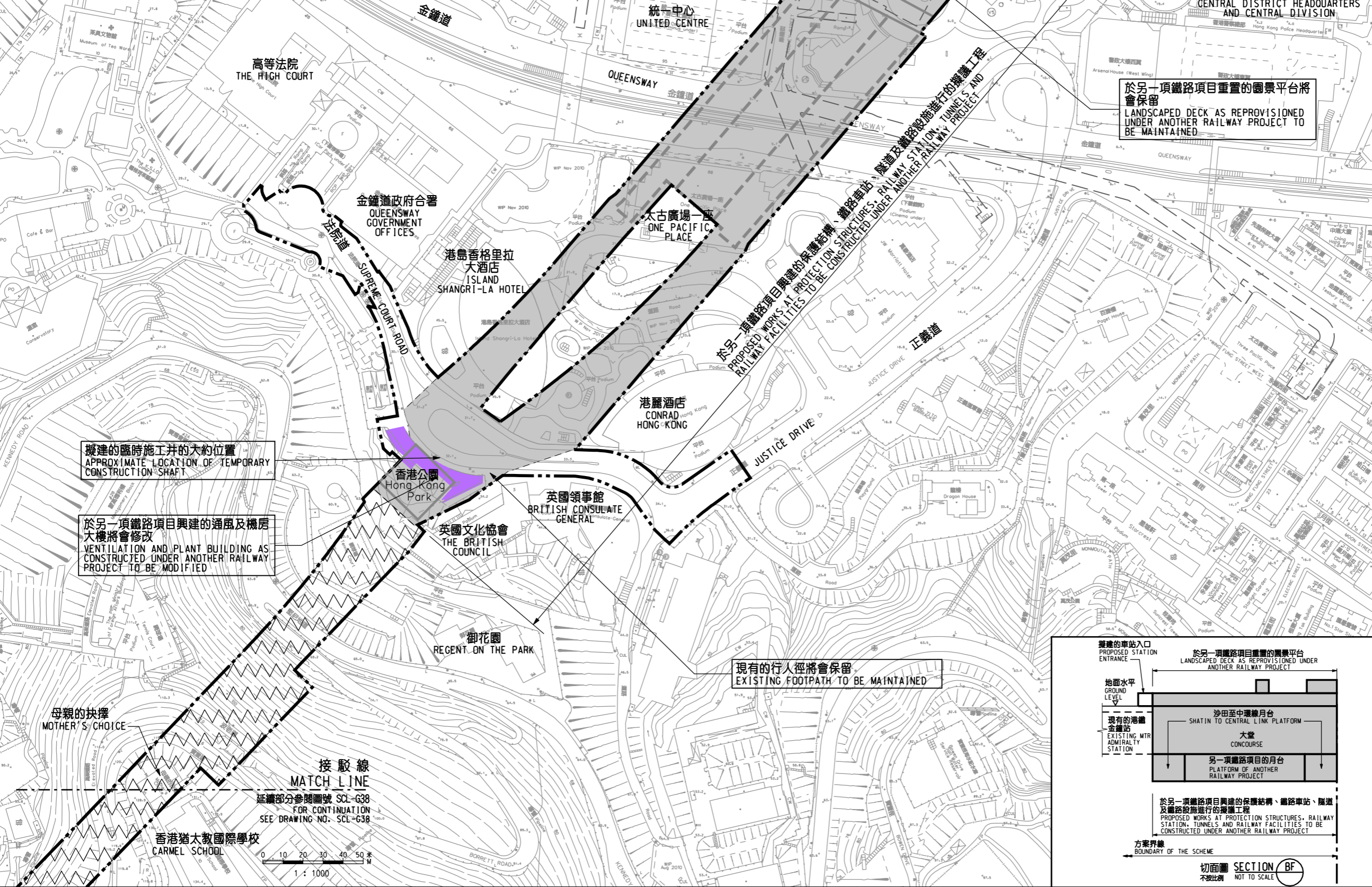
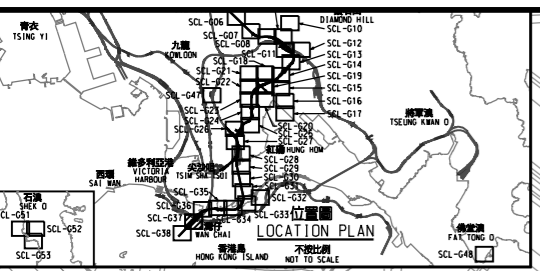


說明 NOTES

此圖根據第 SCL-G37 號 (修改1) 圖則訂制, 以紫色標明將暫時封閉的部分香港公園。
 THIS DRAWING IS PREPARED BASED ON DRAWING NO. SCL-G37 (REVISION 1) AND IS INTENDED TO SHOW THE TEMPORARY CLOSURE OF PART OF HONG KONG PARK (HIGHLIGHTED IN PURPLE).



修訂擬建鐵路隧道的布局及方案界線
 LAYOUT OF PROPOSED RAILWAY TUNNEL AND BOUNDARY OF THE SCHEME AMENDED

現有的鐵路設施將會拆卸
 EXISTING RAILWAY FACILITIES TO BE DEMOLISHED

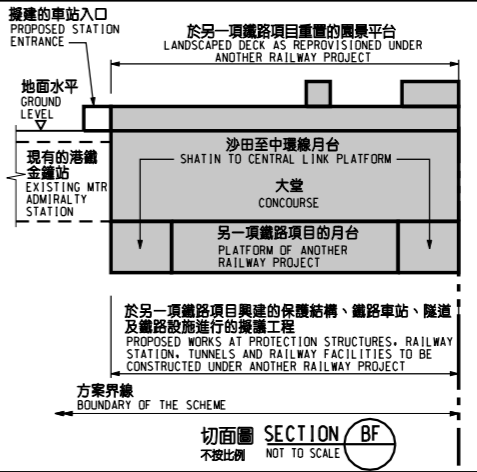
擬建的車站入口的大約位置
 APPROXIMATE LOCATION OF PROPOSED STATION ENTRANCE

於另一項鐵路項目重置的園景平台將會保留
 LANDSCAPED DECK AS REPROVISIONED UNDER ANOTHER RAILWAY PROJECT TO BE MAINTAINED

擬建的臨時施工井的大約位置
 APPROXIMATE LOCATION OF TEMPORARY CONSTRUCTION SHAFT

於另一項鐵路項目興建的通風及機房大樓將會修改
 VENTILATION AND PLANT BUILDING AS CONSTRUCTED UNDER ANOTHER RAILWAY PROJECT TO BE MODIFIED

現有的行人徑將會保留
 EXISTING FOOTPATH TO BE MAINTAINED



一般說明 GENERAL NOTES
 1. 有關一般說明參閱圖號 SCL-G01.
 FOR GENERAL NOTES, REFER TO DRAWING NO. SCL-G01.

修改表
 TABLE OF AMENDMENTS

修改 REV	日期 DATE	種類 BY	類別 SUB	負責 APP	說明 DESCRIPTION

SIGNED

李季為 LI TSZ MAI
 路政署
 CHIEF ENGINEER/
 RAILWAY DEVELOPMENT (1-1)
 HIGHWAYS DEPARTMENT

2/6/2020
 發出日期 DATE OF ISSUE

圖則名稱 DRAWING TITLE
**鐵路條例(第519章)
 沙田至中環線
 暫時封閉部分香港公園**

RAILWAYS ORDINANCE (CHAPTER 519)
 SHATIN TO CENTRAL LINK
 TEMPORARY CLOSURE OF PART OF HONG KONG PARK

圖號 DRAWING NO.
SCL/G37/0056/2

比例 SCALE
 1:1000 (A1)
 或如顯示
 OR
 AS SHOWN

香港特別行政區政府
 THE GOVERNMENT OF THE HONG KONG
 SPECIAL ADMINISTRATIVE REGION

路政署
 HIGHWAYS DEPARTMENT

鐵路拓展處
 RAILWAY DEVELOPMENT OFFICE

PLOT DRW: X:\CAAD_Library\MicroStation\Workspace\p01drw.v\PDF_Color_300dpi_080923.pdf
 PRINTED BY: kelvinnw 03/06/2020 10:41:08
 FILENAME: X:\Land\SCL_V\Road Closure Rev Web\SCL-G37-0056-2.dgn