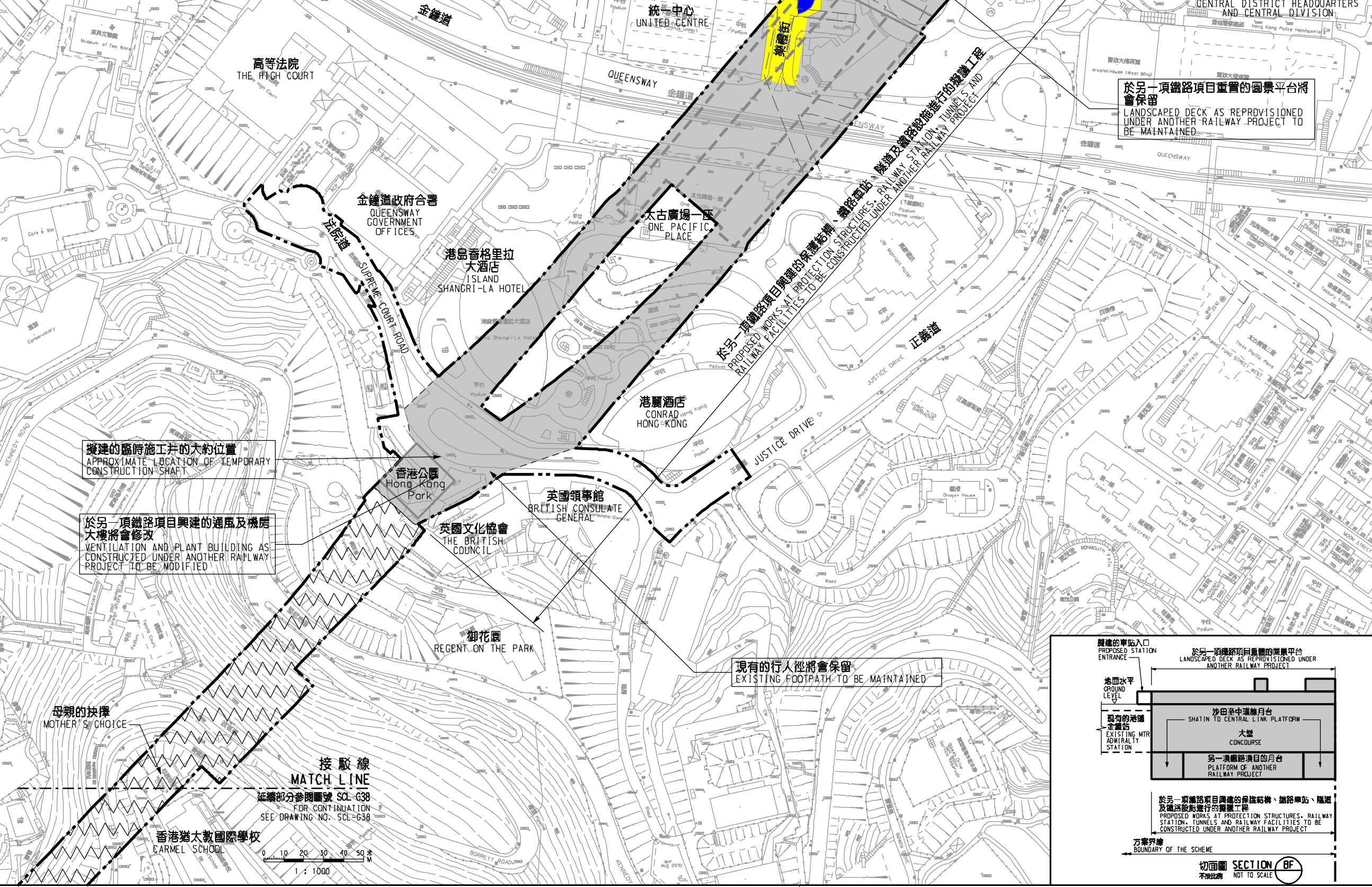
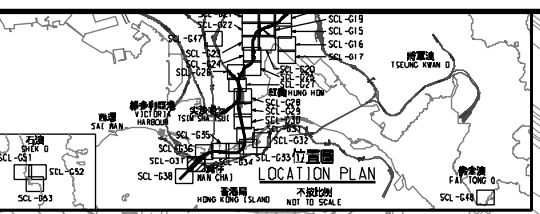


說明 NOTES

此圖根據第 SCL-G37 號 (修改) 圖則制訂, 以藍色標明將暫時封閉的樂禮街路段, 及分別以黃色和粉紅色標明將暫時封閉的部分樂禮街和夏愨道路段。



接駁線 MATCH LINE 延續部分參閱圖號 SCL-G38 FOR CONTINUATION SEE DRAWING NO. SCL-G38

香港猶太教國際學校 CARMEL SCHOOL

修訂擬建鐵路隧道的布局及方案界線 LAYOUT OF PROPOSED RAILWAY TUNNEL AND BOUNDARY OF THE SCHEME AMENDED

現有的鐵路設施將會拆卸 EXISTING RAILWAY FACILITIES TO BE DEMOLISHED

擬建的車站入口的大約位置 APPROXIMATE LOCATION OF PROPOSED STATION ENTRANCE

現有的行人徑將會保留 EXISTING FOOTPATH TO BE MAINTAINED

擬建的臨時施工井的大約位置 APPROXIMATE LOCATION OF TEMPORARY CONSTRUCTION SHAFT

於另一項鐵路項目興建的通風及機房大樓將會修改 VENTILATION AND PLANT BUILDING AS CONSTRUCTED UNDER ANOTHER RAILWAY PROJECT TO BE MODIFIED

於另一項鐵路項目重疊的園景平台將會保留 LANDSCAPED DECK AS REPROVISIONED UNDER ANOTHER RAILWAY PROJECT TO BE MAINTAINED

圖例 LEGEND table with various symbols and their corresponding descriptions for railway facilities, construction areas, and site boundaries.

一般說明 GENERAL NOTES 1. 有關一般說明參閱圖號 SCL-G01. FOR GENERAL NOTES, REFER TO DRAWING NO. SCL-G01.

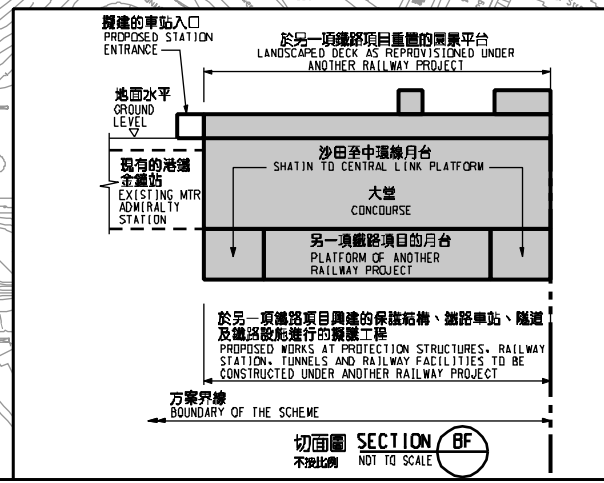
TABLE OF AMENDMENTS table with columns for REV, DATE, BY, SUB, APP, and DESCRIPTION.

SIGNED 李卓人 LI Tsz-yan, 7/3/2019, CHIEF ENGINEER, RAILWAY DEVELOPMENT OFFICE

鐵路條例(第519章) 沙田至中環線 暫時封閉樂禮街和夏愨道路段

RAILWAYS ORDINANCE (CHAPTER 519) SHATIN TO CENTRAL LINK TEMPORARY CLOSURE OF SECTIONS OF RODNEY STREET AND HARCOURT ROAD

香港特別行政區政府 THE GOVERNMENT OF THE HONG KONG SPECIAL ADMINISTRATIVE REGION 路政署 HIGHWAYS DEPARTMENT 鐵路拓展處 RAILWAY DEVELOPMENT OFFICE



Plot and print file names and dates: EX:\Plot\1811\1811_v8_printer.plt, PRINTED BY: AA59225, FILENAME: M:\Land\SCL\VP Road Closure\Rev Web\SCL-G37-0064-4.dgn