

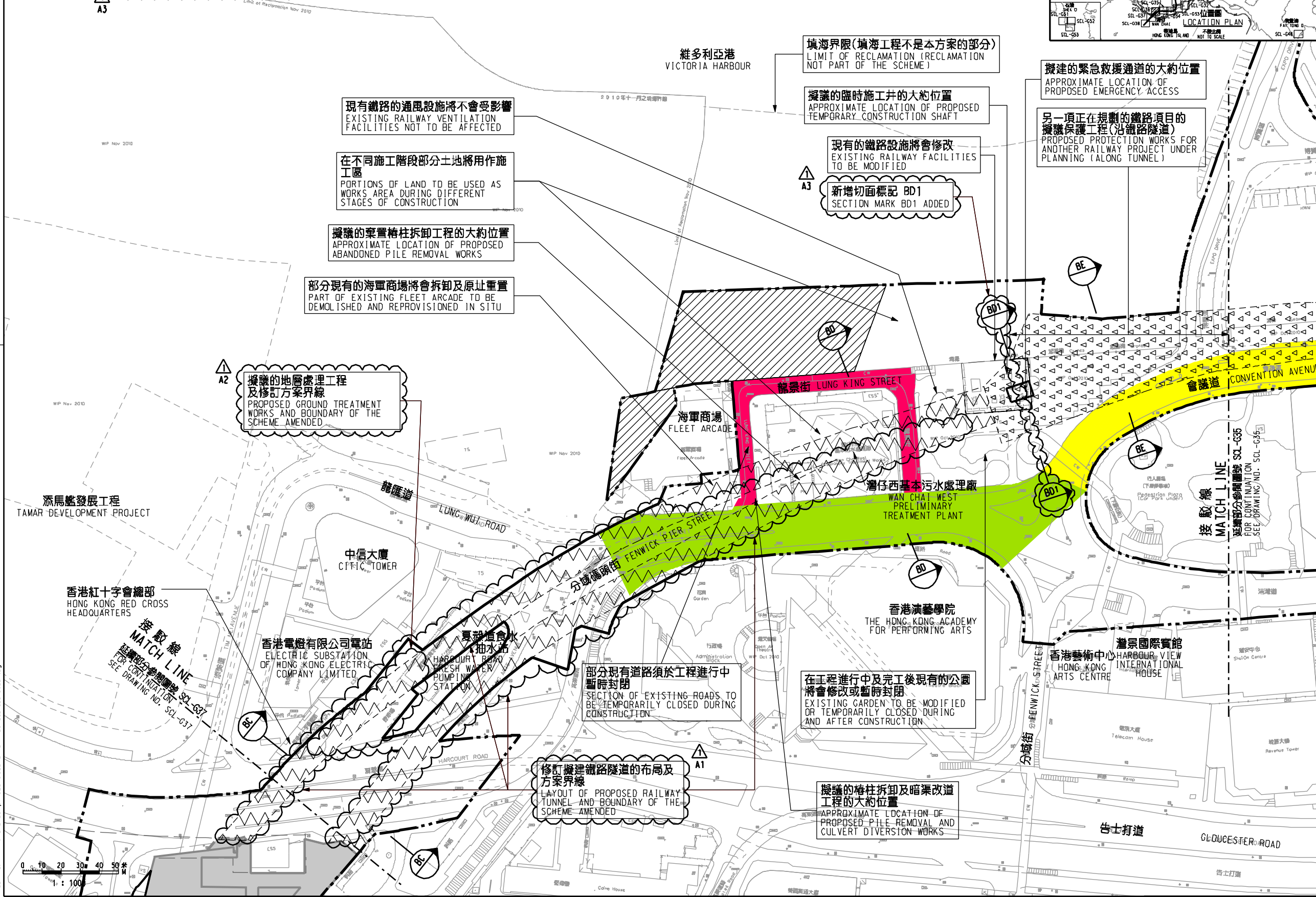
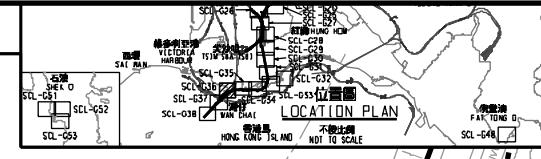
**說明 NOTES**

此圖根據第 SCL-G36 號(修改)圖則制訂, 分別以黃色和綠色標明將暫時封閉的部分會議道和分域碼頭街路段, 以及以紅色標明將暫時封閉的部分龍景街。

THIS DRAWING IS PREPARED BASED ON DRAWING NO. SCL-G36 (REVISION 1) AND IS INTENDED TO SHOW THE TEMPORARY PARTIAL CLOSURE OF CONVENTION AVENUE AND FENWICK PIER STREET (HIGHLIGHTED IN YELLOW AND GREEN RESPECTIVELY), AND THE TEMPORARY PARTIAL CLOSURE OF LUNG KING STREET (HIGHLIGHTED IN RED).

**圖例 LEGEND**

- 方案界線 BOUNDARY OF THE SCHEME
- 擬建的鐵路車站及其他鐵路設施(地下) PROPOSED RAILWAY STATION AND OTHER RAILWAY FACILITIES (UNDERGROUND)
- 擬建的車站/車站入口/過橋大樓/通風井/其他鐵路設施或永久建築物 PROPOSED RAILWAY STATION/STATION ENTRANCES/VENTILATION BUILDINGS/VENTILATION SHAFTS/OTHER RAILWAY FACILITIES OR PERMANENT STRUCTURES
- 現有的車站及其他鐵路設施 EXISTING STATION AND OTHER RAILWAY FACILITIES
- 擬建用鑽孔或掘地或掘地或掘地或掘地(地下) PROPOSED RAILWAY FACILITIES/TUNNEL BY BORED/WINED/DRILL AND BLAST METHOD (UNDERGROUND)
- 擬建用明挖或掘地或掘地或掘地(地下) PROPOSED RAILWAY FACILITIES/TUNNEL BY CUT-AND-COVER METHOD (UNDERGROUND)
- 可能永久封閉的道路(包括行車道、行人徑及露天地方) WHICH MAY BE CLOSED PERMANENTLY
- 擬設置地盤的臨時工程 PROPOSED TEMPORARY WORKS AREA FOR SITE FACILITIES
- 擬於政府前濱或海床或填海地或填海地(填海工程) PROPOSED TEMPORARY WORKS AREA FOR SITE FACILITIES ON GOVERNMENT FORESHORE OR SEABED (OVER OR UPON WHICH RECLAMATION (NOT FOR THE PURPOSE OF FORMING LAND) OR OTHER WORKS MAY BE CARRIED OUT)
- 擬建的行人天橋/扶手電梯/升降機/樓梯 PROPOSED FOOTBRIDGE/ESCALATOR/LIFT/STAIRCASE
- 擬建的有蓋行人通道 PROPOSED COVERED WALKWAY
- 擬於政府前濱或海床或填海地或填海地(填海工程) PROPOSED RAILWAY FACILITIES/TUNNEL (INCLUDING PROTECTION LAYER/PROTECTIVE ARMOUR) BY (IMMERSED TUBE METHOD ON GOVERNMENT FORESHORE OR SEABED (OVER OR UPON WHICH RECLAMATION (NOT FOR THE PURPOSE OF FORMING LAND) OR OTHER WORKS MAY BE CARRIED OUT)
- 擬於政府前濱或海床或填海地或填海地(填海工程) PROPOSED RAILWAY FACILITIES/TUNNEL (INCLUDING PROTECTION LAYER/PROTECTIVE ARMOUR) BY (IMMERSED TUBE METHOD ON GOVERNMENT FORESHORE OR SEABED (OVER OR UPON WHICH RECLAMATION (NOT FOR THE PURPOSE OF FORMING LAND) OR OTHER WORKS MAY BE CARRIED OUT)
- 擬建於保護結構的鐵路設施/隧道(地下) PROPOSED RAILWAY FACILITIES/TUNNEL(S) UNDER PROTECTION STRUCTURES
- 擬建於沙中或中環及另一項正在規劃的鐵路項目(另一項鐵路項目) PROPOSED RAILWAY FACILITIES/TUNNEL(S) (INCLUDING PROTECTION LAYER/PROTECTIVE ARMOUR) BY (IMMERSED TUBE METHOD ON GOVERNMENT FORESHORE OR SEABED (OVER OR UPON WHICH RECLAMATION (NOT FOR THE PURPOSE OF FORMING LAND) OR OTHER WORKS MAY BE CARRIED OUT)
- 擬建於沙中或中環及另一項正在規劃的鐵路項目(另一項鐵路項目) PROPOSED RAILWAY FACILITIES/TUNNEL(S) (INCLUDING PROTECTION LAYER/PROTECTIVE ARMOUR) BY (IMMERSED TUBE METHOD ON GOVERNMENT FORESHORE OR SEABED (OVER OR UPON WHICH RECLAMATION (NOT FOR THE PURPOSE OF FORMING LAND) OR OTHER WORKS MAY BE CARRIED OUT)
- 受影響的政府前濱或海床的大約範圍 APPROXIMATE EXTENT OF AFFECTED GOVERNMENT FORESHORE OR SEABED
- 圖則修改 DRAWING REVISION
- 修訂參考編號(參閱憲報公告) AMENDMENT REFERENCE NUMBER (SEE GAZETTE NOTICE)
- 修訂範圍 AMENDMENT AREA



**一般說明 GENERAL NOTES**

1. 有關一般說明參閱圖號 SCL-G01.  
FOR GENERAL NOTES, REFER TO DRAWING NO. SCL-G01.

修訂號	日期	修訂	修訂	修訂	說明
REV	DATE	BY	SUB	APP	DESCRIPTION

**SIGNED**

蕭榮平 CHOU WING PING, FRANKIE

16/3/2016

發出日期 DATE OF ISSUE

**圖則名稱 DRAWING TITLE**

鐵路條例(第519章)  
沙田至中環線  
暫時封閉會議道和分域碼頭街路段;  
以及龍景街  
RAILWAYS ORDINANCE (CHAPTER 519)  
SHATIN TO CENTRAL LINK  
TEMPORARY CLOSURE OF SECTIONS OF CONVENTION AVENUE AND FENWICK PIER STREET; AND LUNG KING STREET

圖號 DRAWING NO. SCL/G36/0053/1

比例 SCALE 1:1000 (A1)  
或前顯示 OR AS SHOWN

**香港特別行政區政府**  
THE GOVERNMENT OF THE HONG KONG  
SPECIAL ADMINISTRATIVE REGION

**路政署**  
HIGHWAYS DEPARTMENT

**鐵路拓展處**  
RAILWAY DEVELOPMENT OFFICE

PLOT DRW: E:\lib\Plot\118\vb\p\inter.plt  
 PRINTED BY: ka\m\y 27/03/2016 10:34:49  
 FILENAME: x:\hono\ad\p\road closure\rev\web\scl-g36-0053-1.dgn