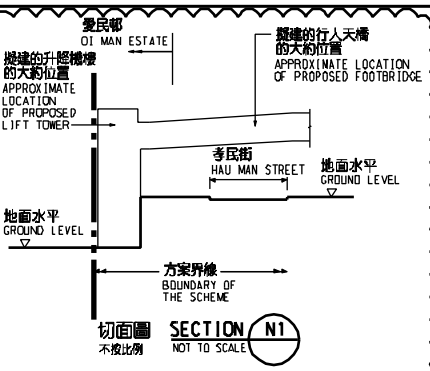
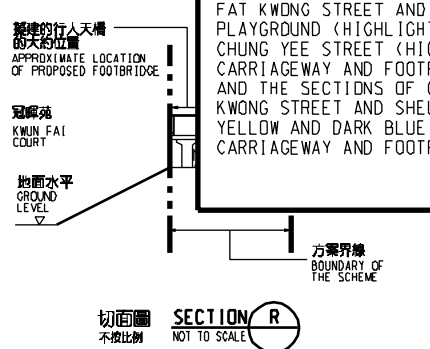
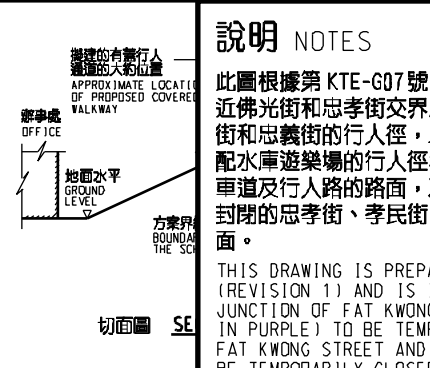
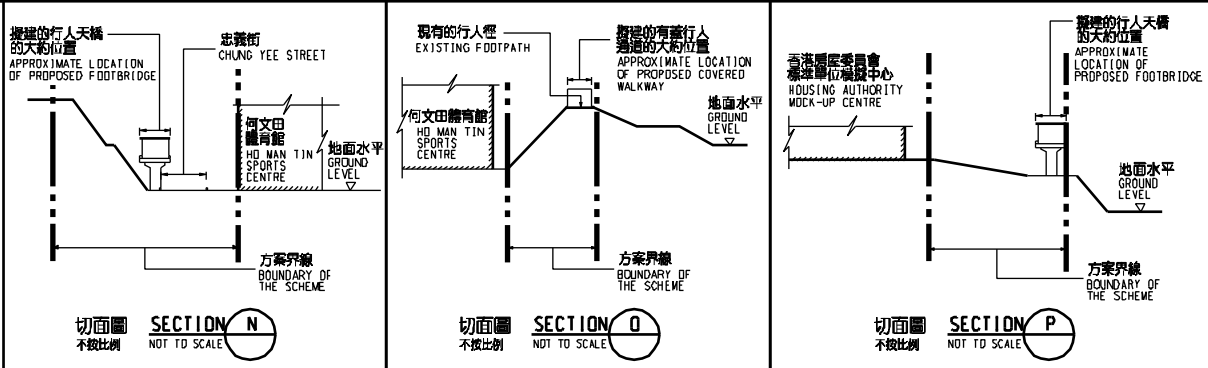


圖例 LEGEND

- 方案界線
BOUNDARY OF THE SCHEME
- 擬建的鐵路車站及其他鐵路設施
PROPOSED RAILWAY STATION AND OTHER RAILWAY FACILITIES
- 擬建的鐵路車站及其他鐵路設施(地下)
PROPOSED RAILWAY STATION AND OTHER RAILWAY FACILITIES (UNDERGROUND)
- 擬建的鑽挖或鑽掘或鑽掘(地下)
PROPOSED BORED / MINED / DRILL AND BLAST TUNNEL (UNDERGROUND)
- 擬採用明挖或填法興建的鐵路設施(地下)
PROPOSED RAILWAY FACILITIES BY CUT-AND-COVER METHOD (UNDERGROUND)
- 現有的車站及其他鐵路設施
EXISTING STATION AND OTHER RAILWAY FACILITIES
- 圖則修改
DRAWING REVISION
- 修訂參考編號(參考憲報公告)
AMENDMENT REFERENCE NUMBER (SEE GAZETTE NOTICE)
- 擬建的行人天橋/有蓋行人通道
PROPOSED FOOTBRIDGE / COVERED WALKWAY
- 擬建的地下臨時建築通道
PROPOSED TEMPORARY UNDERGROUND CONSTRUCTION ACCESS
- 擬設置地盤設施的臨時施工區
PROPOSED TEMPORARY WORKS AREA FOR SITE FACILITIES
- 擬用作興建鐵路設施的臨時工地
PROPOSED TEMPORARY WORKS SITES FOR CONSTRUCTION OF RAILWAY FACILITIES
- 可能永久封閉的道路
ROADS WHICH MAY BE CLOSED PERMANENTLY
- 可能在工程期間封閉的道路和行人徑
ROADS AND FOOTPATHS PROPOSED TO BE CLOSED DURING CONSTRUCTION
- 修訂範圍
AMENDMENT AREA

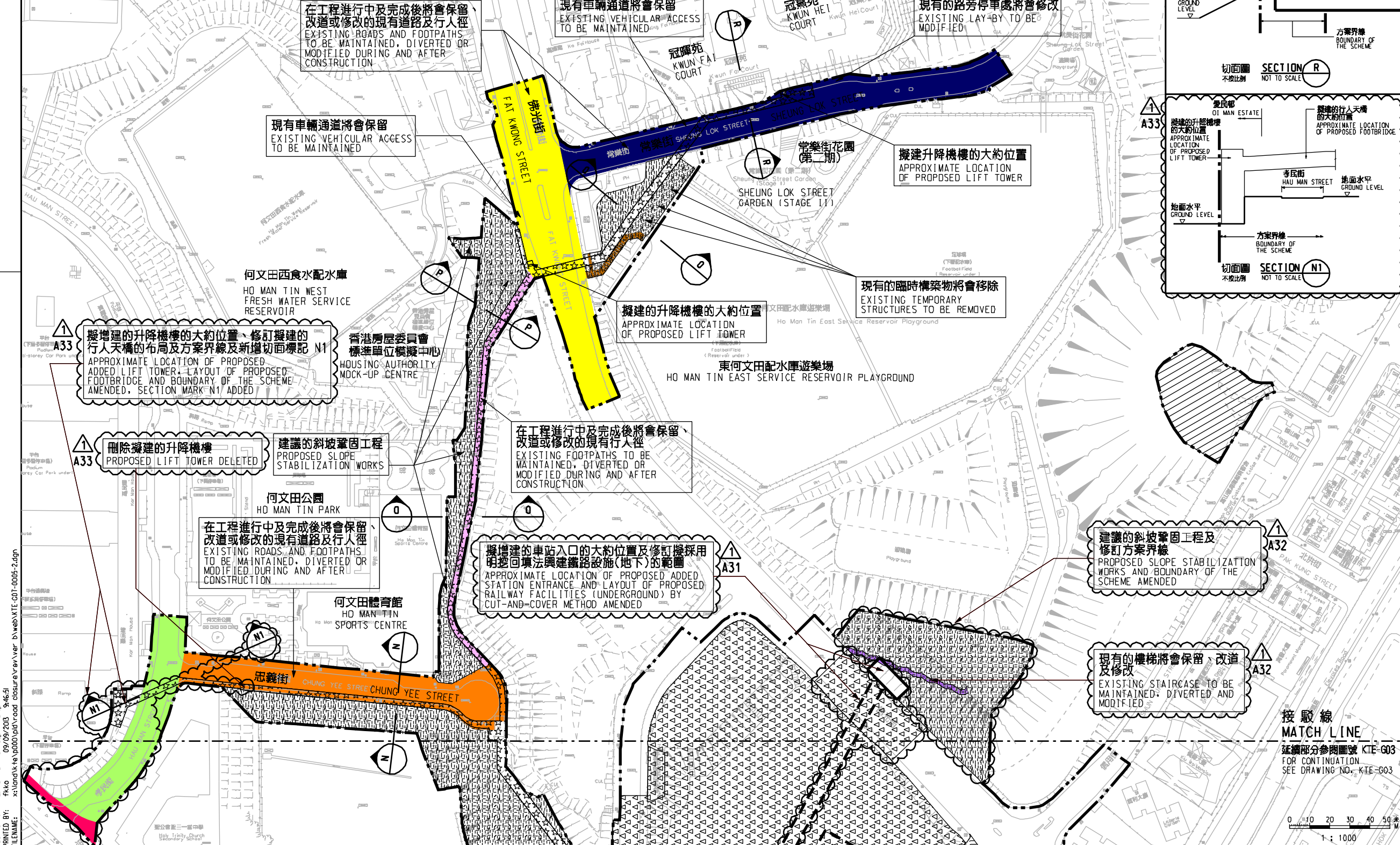


說明 NOTES

此圖根據第 KTE-G07 號 (修改) 圖則訂制, 以紫色標明將暫時封閉的鄰近佛光街和忠義街交界處的樓梯, 以粉紅色標明將暫時封閉的连接佛光街和忠義街的行人徑, 以啡色標明將暫時封閉的连接佛光街和東何文田配水庫遊樂場的行人徑和樓梯, 以橙色標明將暫時封閉的忠義街部分行車道及行人路的路面, 及分別以紅色、綠色、黃色和深藍色標明將暫時封閉的忠義街、孝民街、佛光街和常樂街部分行車道及行人路路段的路面。

THIS DRAWING IS PREPARED BASED ON DRAWING NO. KTE-G07 (REVISION 1) AND IS INTENDED TO SHOW THE STAIRCASE NEAR THE JUNCTION OF FAT KWONG STREET AND CHUNG HAU STREET (HIGHLIGHTED IN PURPLE) TO BE TEMPORARILY CLOSED, THE FOOTPATH CONNECTING FAT KWONG STREET AND CHUNG YEE STREET (HIGHLIGHTED IN PINK) TO BE TEMPORARILY CLOSED, THE FOOTPATH AND STAIRCASE CONNECTING FAT KWONG STREET AND HO MAN TIN EAST SERVICE RESERVOIR PLAYGROUND (HIGHLIGHTED IN BROWN) TO BE TEMPORARILY CLOSED, CHUNG YEE STREET (HIGHLIGHTED IN ORANGE) OF WHICH PARTS OF THE CARRIAGEWAY AND FOOTPATH WIDTHS ARE TO BE TEMPORARILY CLOSED, AND THE SECTIONS OF CHUNG HAU STREET, HAU MAN STREET, FAT KWONG STREET AND SHEUNG LOK STREET (HIGHLIGHTED IN RED, GREEN, YELLOW AND DARK BLUE RESPECTIVELY) OF WHICH PARTS OF THE CARRIAGEWAY AND FOOTPATH WIDTHS ARE TO BE TEMPORARILY CLOSED.

- 除非圖則中特別註明, 否則在方案界線內, 或與方案界線毗鄰的所有建築物、汽車通道及行人通道, 包括逃生路徑, 將會保留。
- 所有水平均為約數, 以米為單位, 並高於香港的主水平基準。
- 圖則顯示的建造方法分界線只是大體位置, 有關界線可因應當時的地盤情況而作出改動。



一般說明 GENERAL NOTES

- 有關一般說明參閱圖號 KTE - G01。

修訂號 REV	日期 DATE	修訂人 BY	核對人 SUB	負責人 APP	說明 DESCRIPTION
A33					擬增建的升降機的大約位置、修訂擬建的行人天橋的布局及方案界線及新增切面標記 N1
A32					建議的斜坡鞏固工程及修訂方案界線

SIGNED
 批准發出 APPROVED FOR ISSUE
 6/9/2013
 發出日期 DATE OF ISSUE

王澤光 WONG MAI KWONG
 總工程師 / 高級技師 I-3
 CHIEF ENGINEER / SENIOR ENGINEER I-3
 HIGHWAYS DEPARTMENT

圖則名稱 DRAWING TITLE
鐵路條例 (第519章) 觀塘線延伸
KWUN TONG LINE EXTENSION
 暫時封閉鄰近佛光街和忠義街交界處的樓梯, 連接佛光街和忠義街的行人徑, 連接佛光街和東何文田配水庫遊樂場的行人徑和樓梯, 忠義街及忠義街、孝民街、佛光街和常樂街路段 RAILWAYS ORDINANCE (CHAPTER 519)
 臨時封閉鄰近佛光街和忠義街交界處的樓梯, 連接佛光街和忠義街的行人徑, 連接佛光街和東何文田配水庫遊樂場的行人徑和樓梯, 忠義街及忠義街、孝民街、佛光街和常樂街路段

圖號 DRAWING NO.
KTE/G07/0005/2

比例 SCALE
 1:1000 (A1)
 或顯示 AS SHOWN

香港特別行政區政府
 THE GOVERNMENT OF THE HONG KONG
 SPECIAL ADMINISTRATIVE REGION

路政署
 HIGHWAYS DEPARTMENT

鐵路拓展處
 RAILWAY DEVELOPMENT OFFICE

PLOT DRW: E:\lib\p101\18\p101\inter.plt
 PRINTED BY: ftkk 09/09/2003 9:46:51
 FILENAME: x:\lcm\k-rs\p000\pdr\ood closure\rev\er D:\web\KTE-G07-0005-2.dgn