



Central – Wan Chai Bypass & Island Eastern Corridor Link

Consultation with HKCA

19 Nov 2009

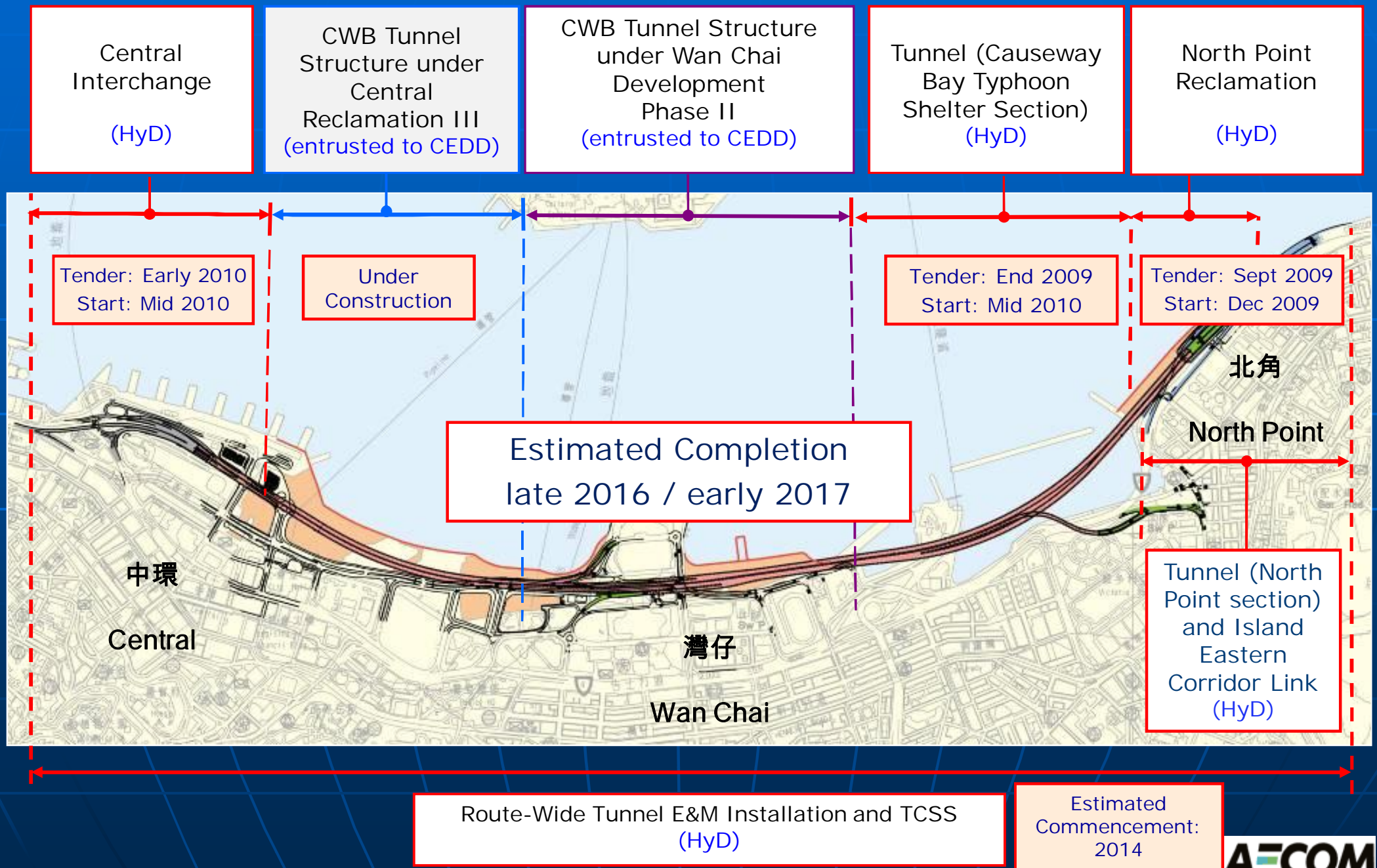


AECOM



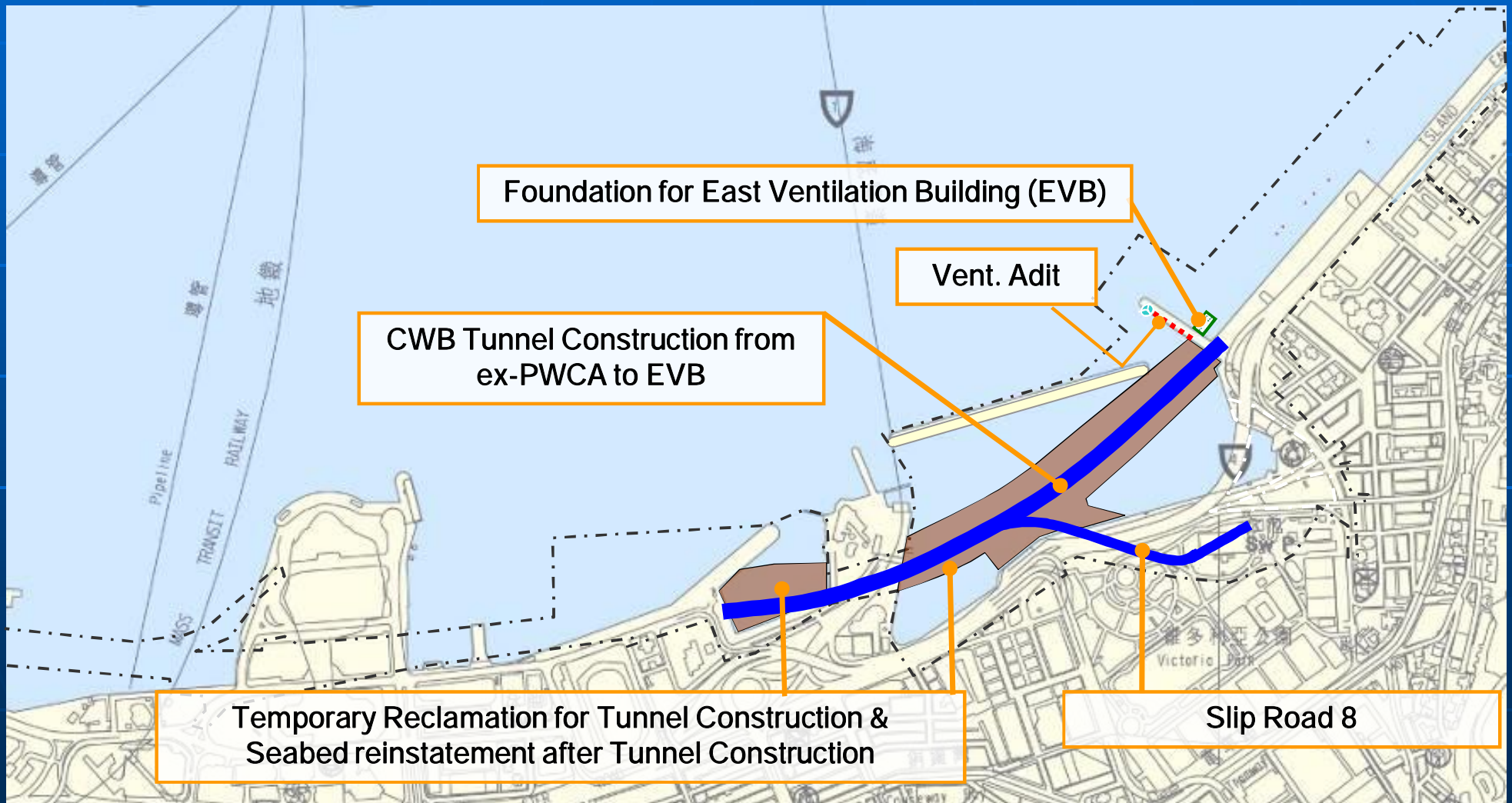


Project Overview



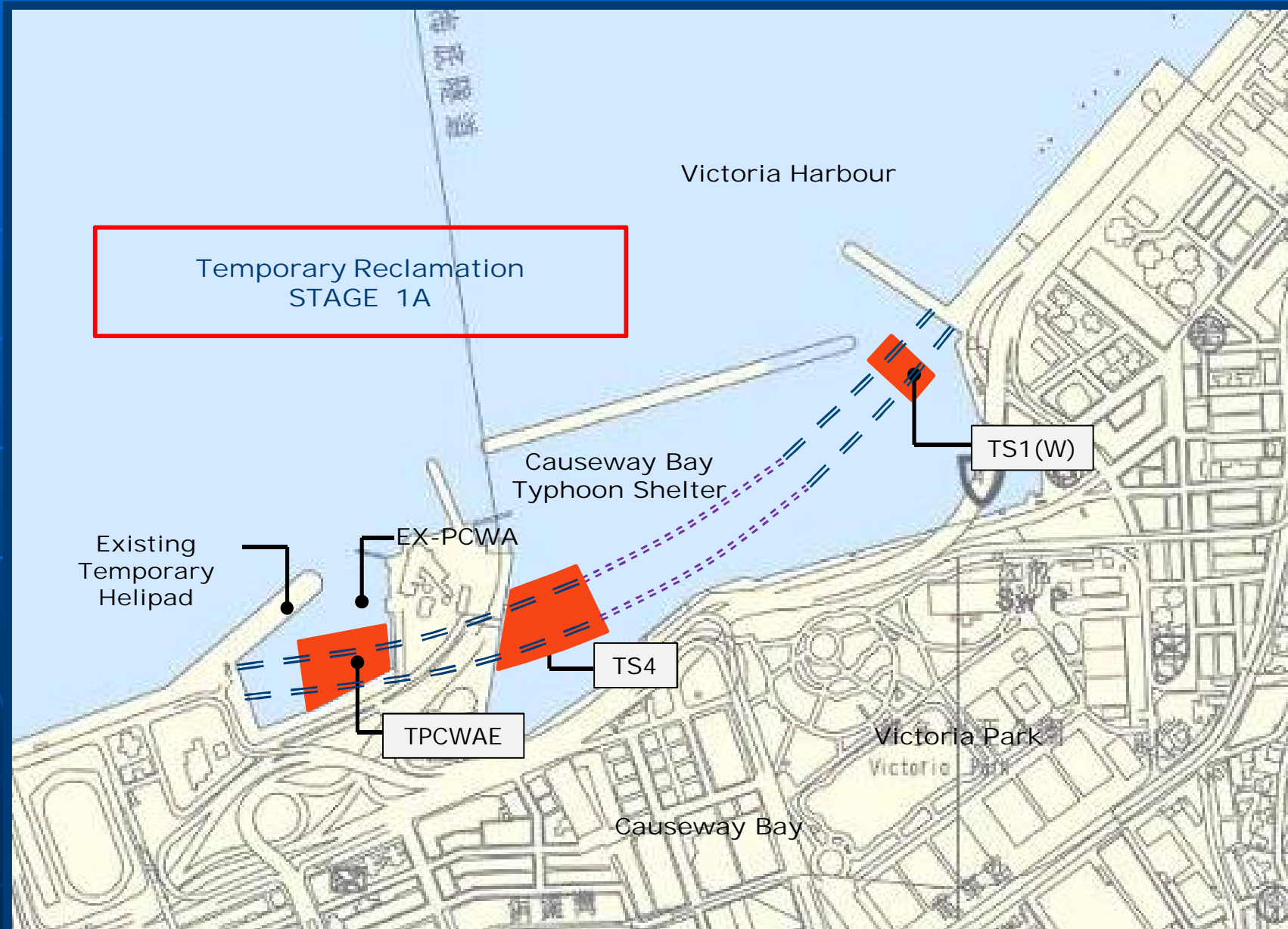


CWB Tunnel (from ex-PCWA to EVB)



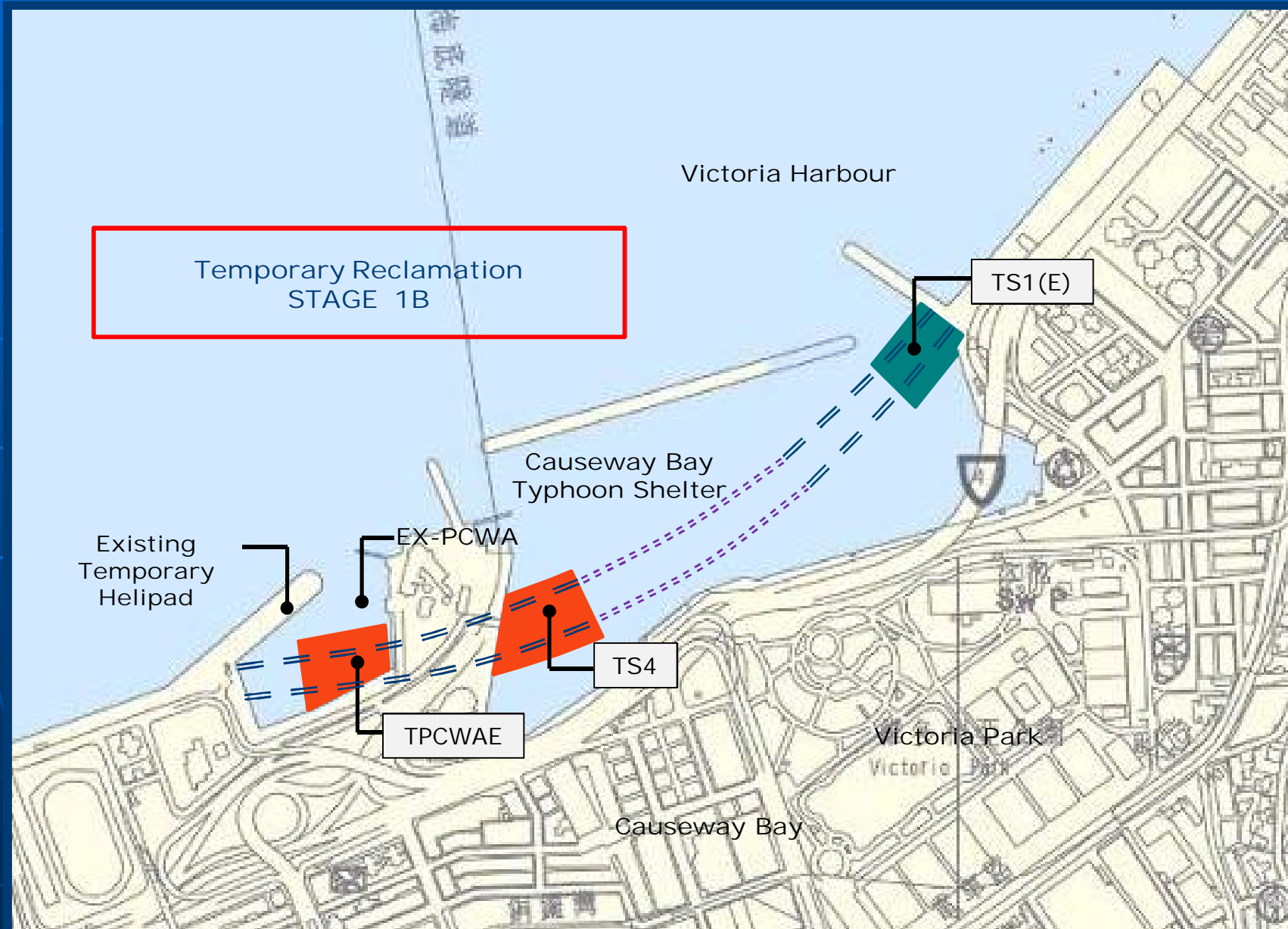


Contract No. HY/2009/15 Central-Wan Chai Bypass - Tunnel (CBTS Section)



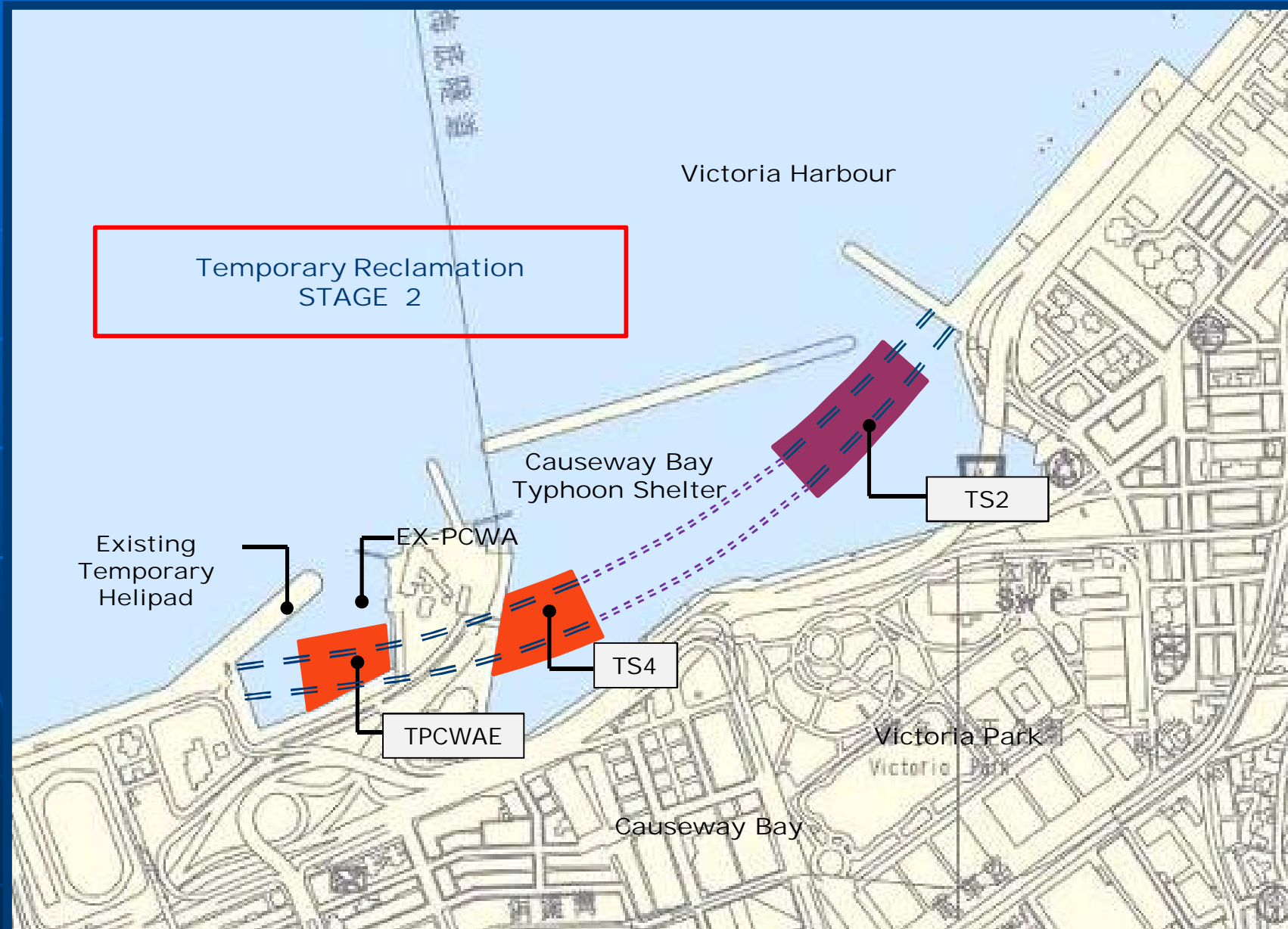


Contract No. HY/2009/15 Central-Wan Chai Bypass - Tunnel (CBTS Section)



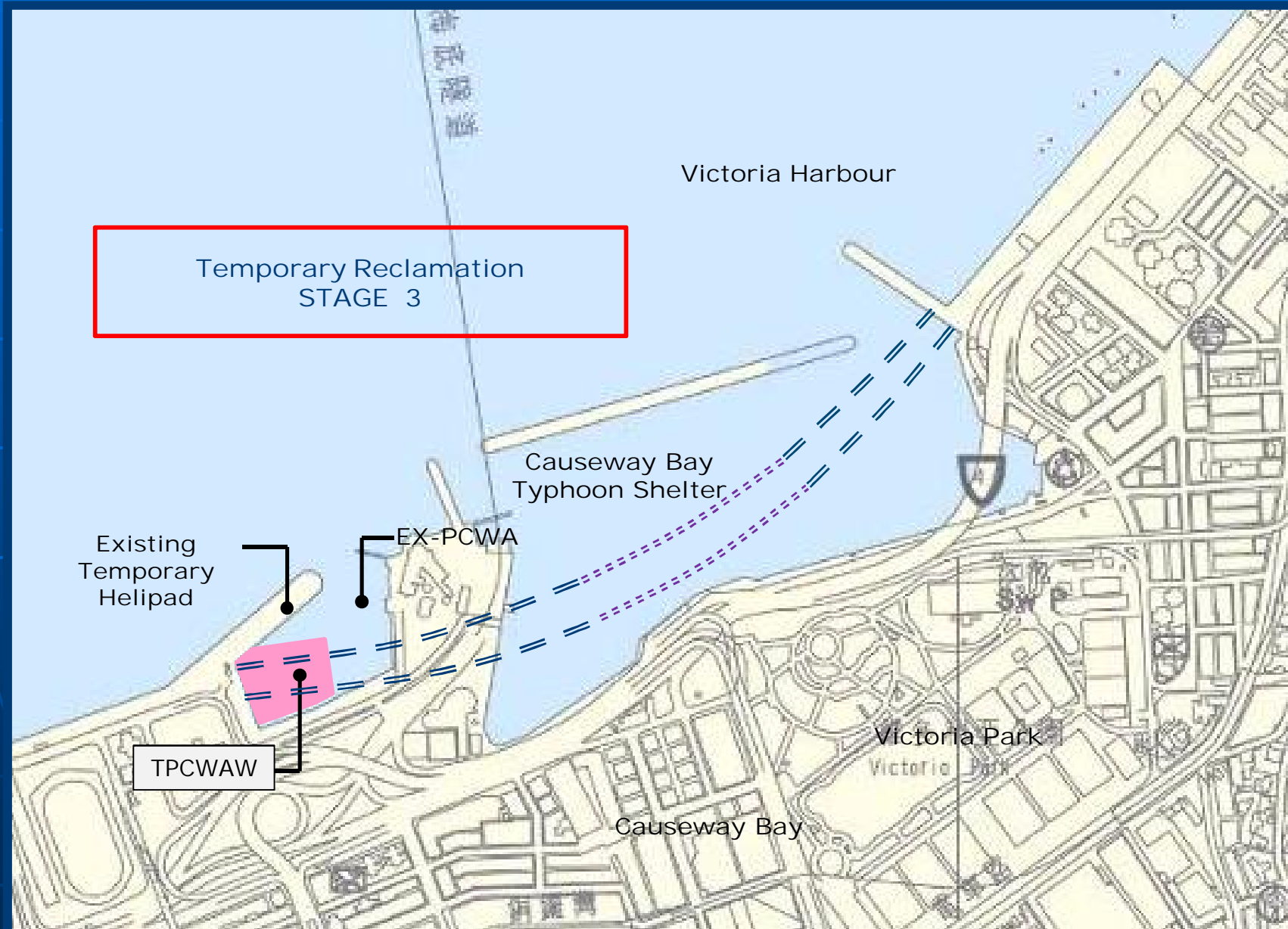


Contract No. HY/2009/15 Central-Wan Chai Bypass - Tunnel (CBTS Section)





Contract No. HY/2009/15 Central-Wan Chai Bypass - Tunnel (CBTS Section)

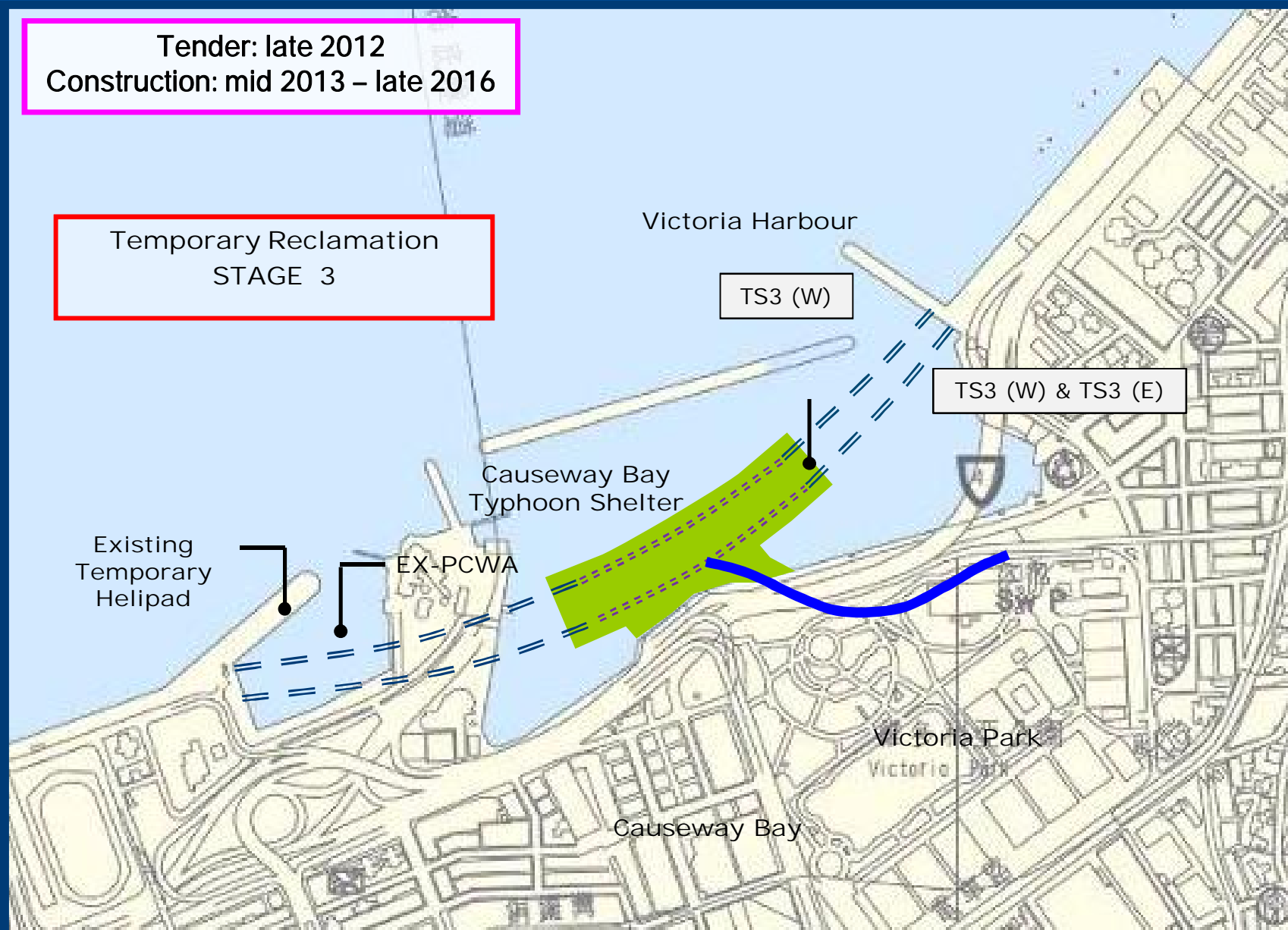




Central-Wan Chai Bypass – Tunnel (Slip Road 8 section)

Tender: late 2012
Construction: mid 2013 – late 2016

Temporary Reclamation
STAGE 3

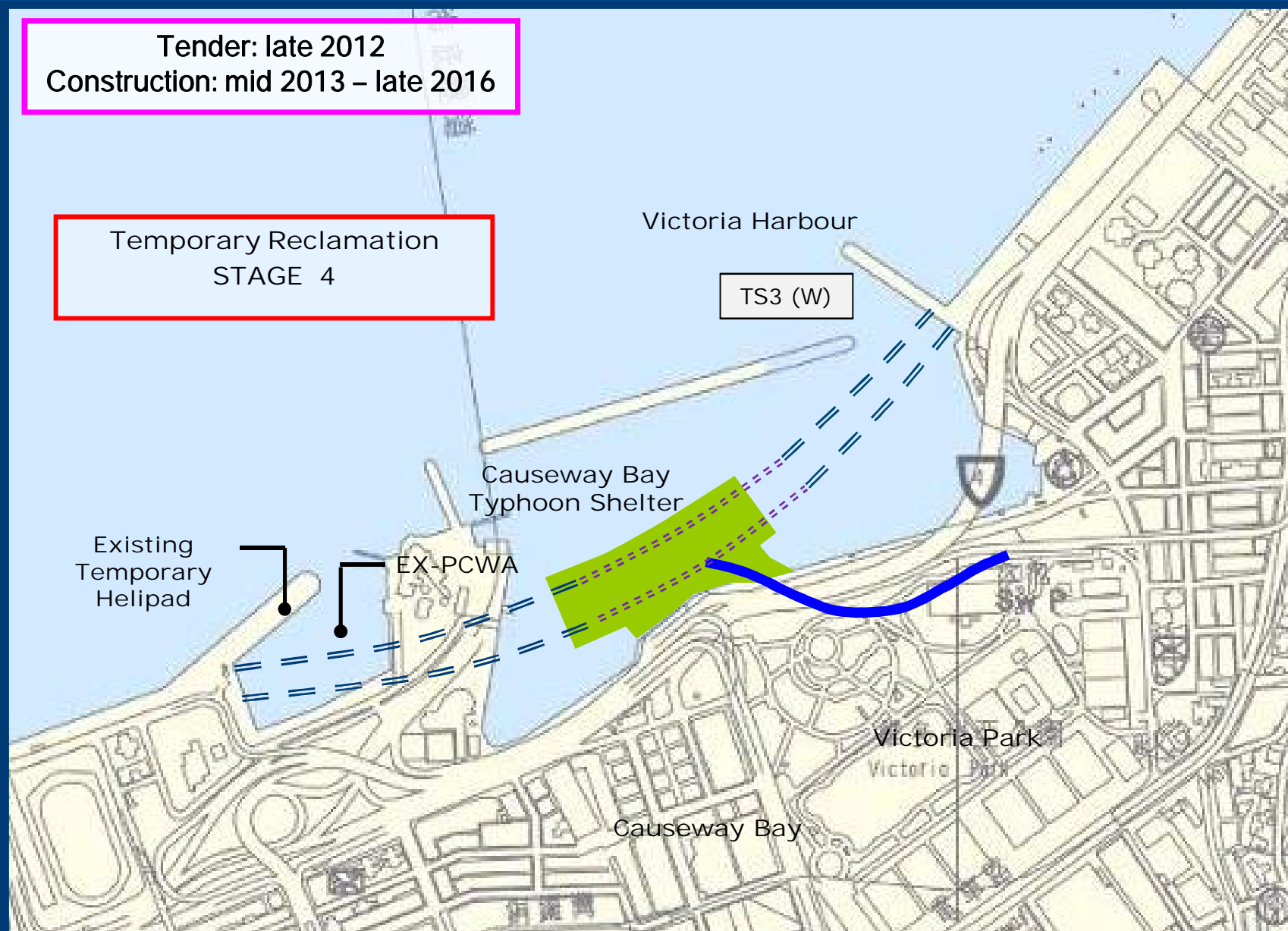




Central-Wan Chai Bypass – Tunnel (Slip Road 8 section)

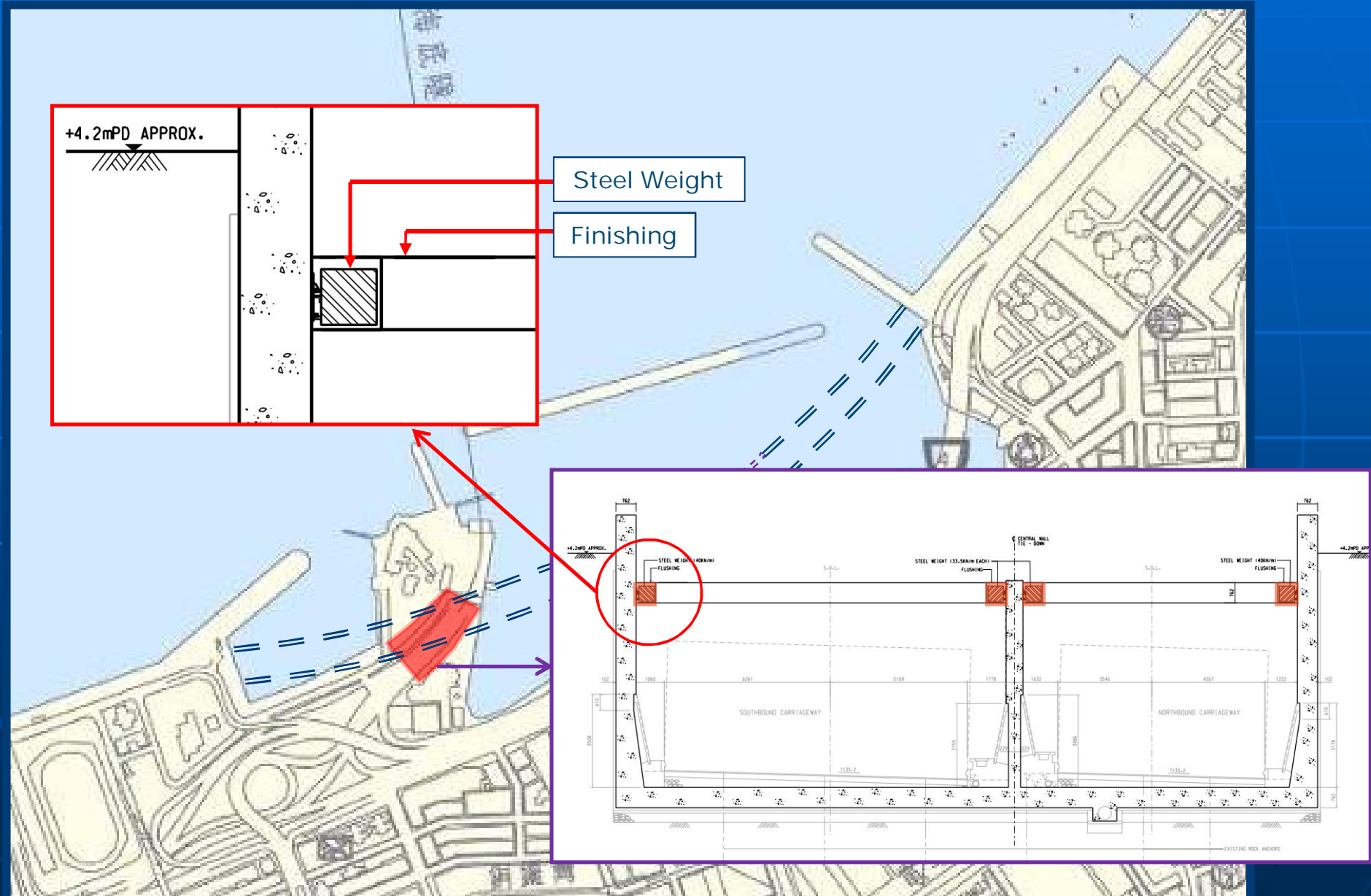
Tender: late 2012
Construction: mid 2013 – late 2016

Temporary Reclamation
STAGE 4





Cross Harbor Tunnel Protection Works





Important Issues to be addressed in Tender

- Compliance with PHO and CCM
- Site constraints and programme
- Marine as major construction access
- Relocation of existing marine vessels at CBTS
- High standard requirement on environmental aspects including aesthetic of site hoarding and office
- Acceptance of alternative tender on cut and cover tunnel
- Tenderer may be required to present their tender submission



Construction Model Control Plan

■ Purpose

- To assist Tenderers to appreciate project constraints
- To enable 3D visualization of major construction activities
- To demonstrate the Tenders comply with the requirements and programme stated in the CCM report
- For monitoring of works programme during construction
- To demonstrate the technical feasibility of Contractor's method of construction
- To identify potential clashes between different construction work elements / activities
- To be used for public consultation / presentation



Construction Model Control Pan

■ Tender Submission

- 3D CAD Model of the permanent works and background information will be provided to tenderers
- Short term license of software "UC-win/Road" will be provided to tenderers
- Tenderers are required to submit a 4D CAD Model in association with their master programme for the Works
- Tenderers are required to submit 3D CAD Models to demonstrate their proposed construction methods, construction plant arrangement, construction sequence for tunnel construction
- Tenderers may be required to attend presentation



Thank You



Q&A