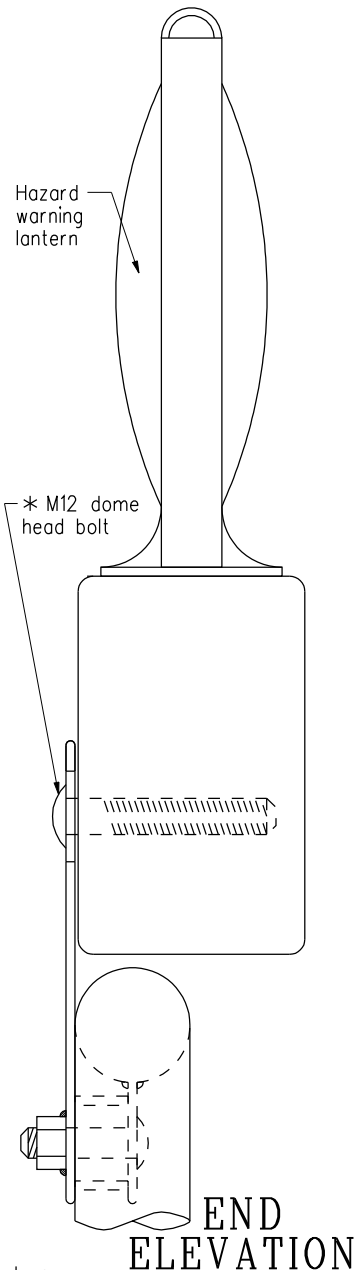
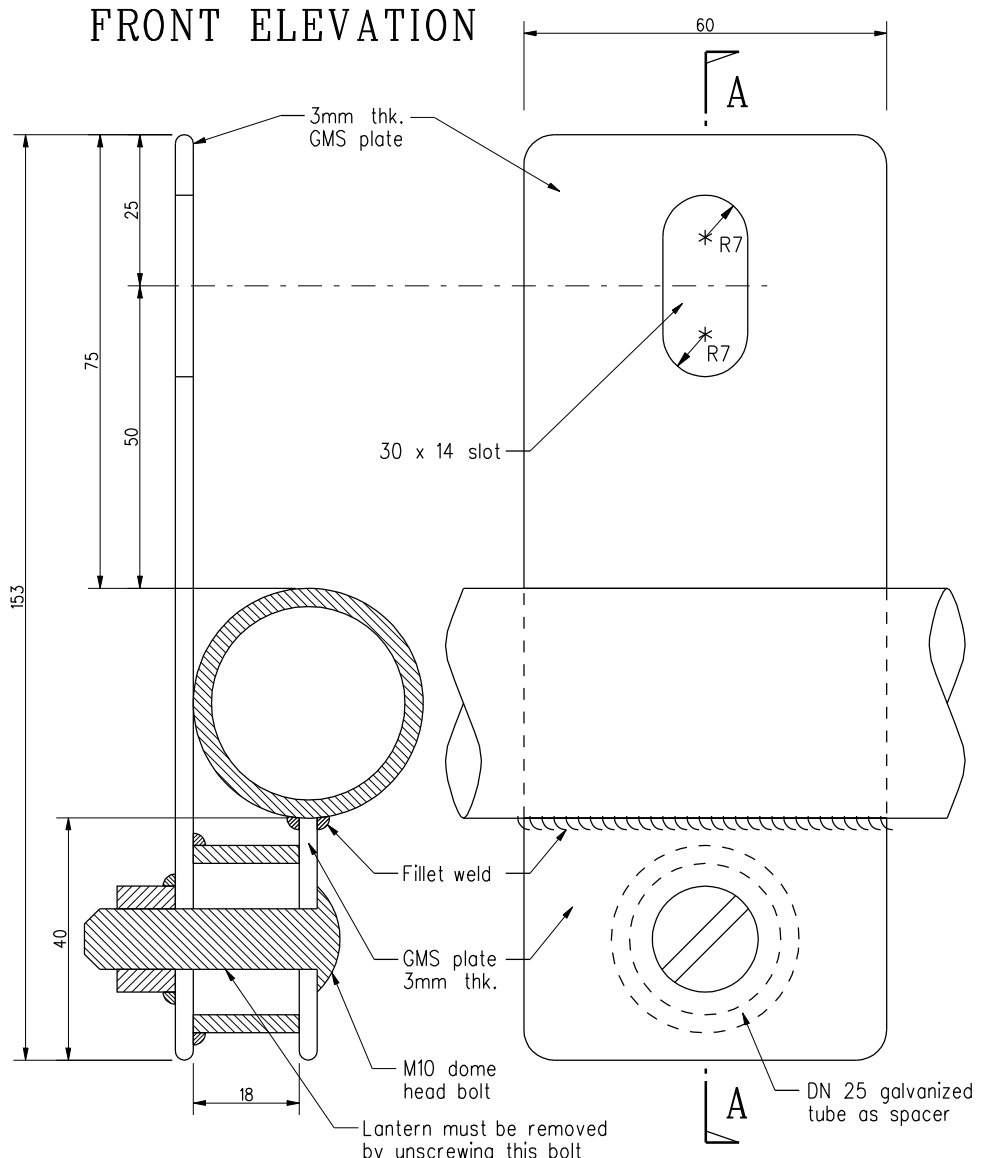


**FRONT ELEVATION**



**END ELEVATION**



**SECTION A - A**

**DETAIL 'X'**

**ELEVATION**

**Notes:**

1. All dimensions are in millimetres.
2. Bolt for fixing hazard warning lantern shall be hot-dip galvanized.
3. GMS plate must not protrude above top rail after removal of lantern.
4. For plastic barrier, no part of the mounting mechanism shall protrude above the top rail after removal of the lantern.

\*Bolt size shall suit lantern.

A	Note 4 added.		Jul 08
	New Issue		Mar 03
REF.	REVISION	SIGNATURE	DATE

**FIXING DETAIL FOR  
HAZARD WARNING  
LANTERN ON RAIL OF  
TEMPORARY BARRIER**

<b>HIGHWAYS DEPARTMENT</b>		
REFERENCE	DRAWING No.	CAD
SCALE	<b>H 6151A</b>	
Diagrammatic		