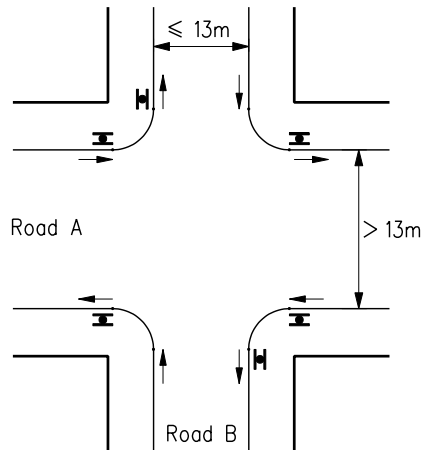
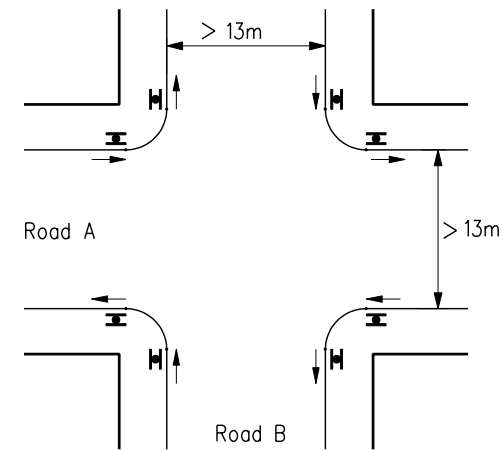


JUNCTION OF TWO NARROW STREETS



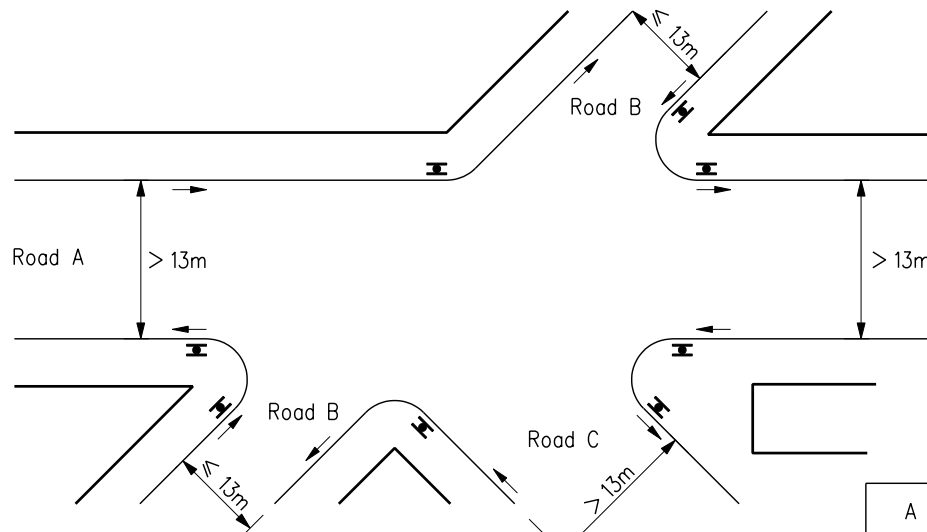
JUNCTION OF A WIDE STREET AND A NARROW STREET



JUNCTION OF TWO WIDE STREETS

LEGEND:

- Traffic direction
- ▬ Position of street name plates



COMPLICATED JUNCTION

Note:

1. Refer to HyD Standard Drawing No. H6153 for recommended layout at a corner of road junction.

A	Cantilever-mounted option for street name plates deleted.		Oct 04
	New Issue		Mar 04
REF.	REVISION	SIGNATURE	DATE

# LAYOUTS OF STREET NAME PLATES WITH BUILDING NUMBERS AT ROAD JUNCTION

HIGHWAYS DEPARTMENT			
REFERENCE	DRAWING No.		CAD
SCALE	DIAGRAMMATIC		H 6154A