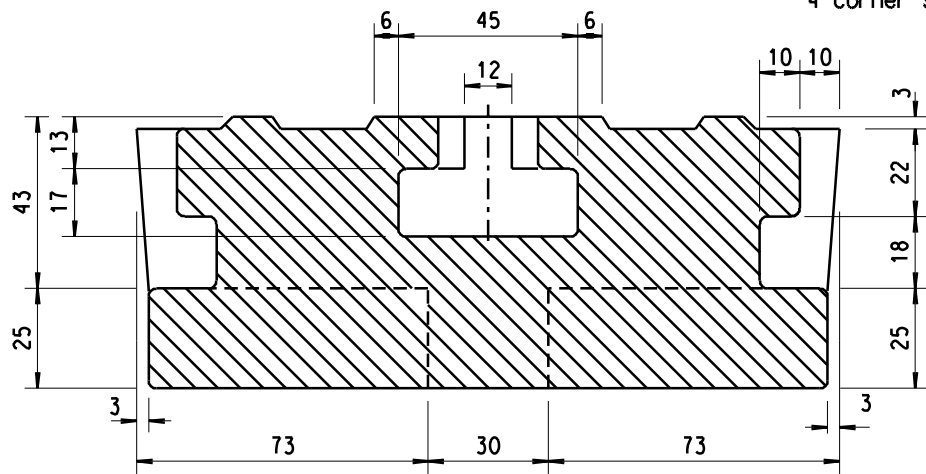
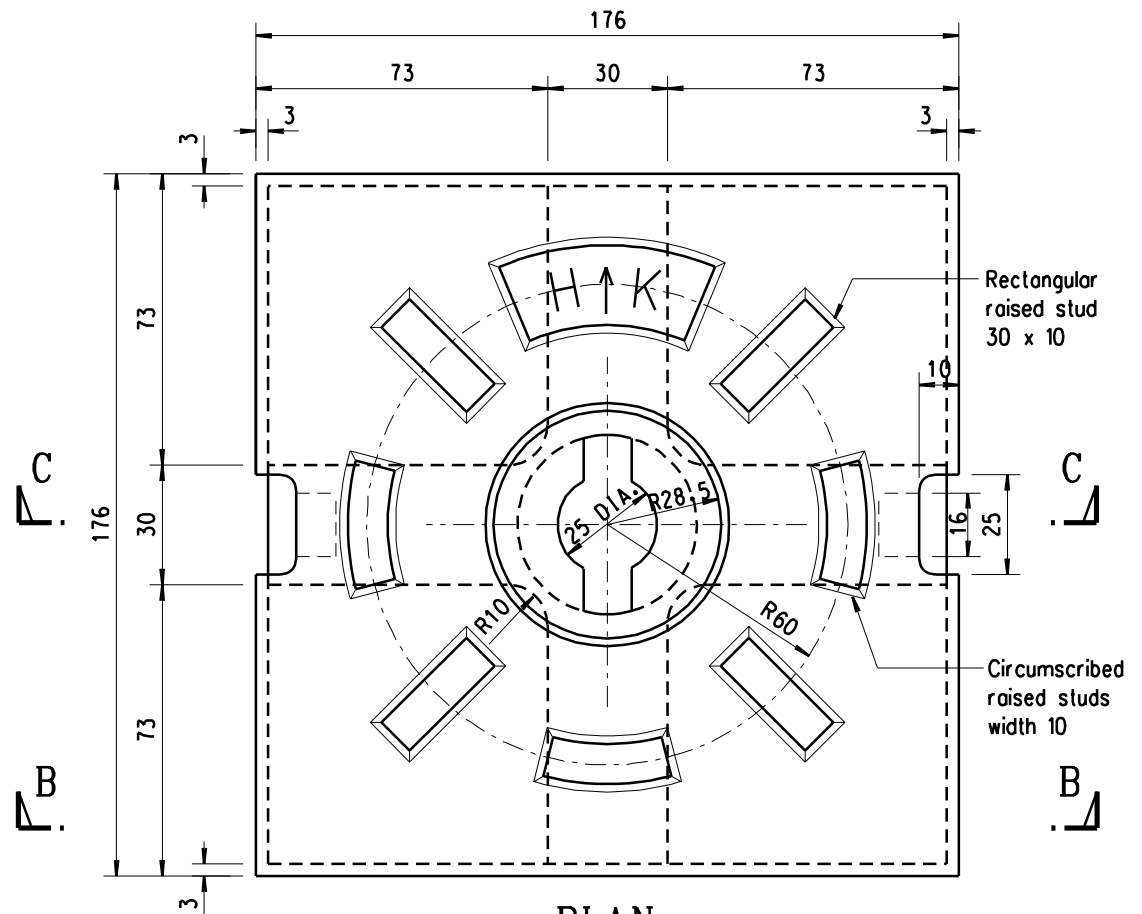


SECTION B-B

Machined at 4 corner supports



SECTION C-C



PLAN
C. I. COVER

Notes:

1. Dimensions are in millimetres.
2. All corners are to be rounded to approximately 2 radius.
3. Cast iron for cover and frame is to conform to grade 150 of BS 1452.
4. Machined where marked "M" and allowance should be made for machine where applicable.

A	General revisions to follow drg.no. SW085(2) of HyD/Str.		Mar 00
	Former drg. no. H3009/2 with general revision		June 94
REF.	REVISION	SIGNATURE	DATE

HIGHWAYS DEPARTMENT

REFERENCE	DRAWING No.	CAD
SCALE 1:2	H 3115A	

RODDING EYE COVER FOR HIGHWAY STRUCTURES
(SHEET 2 OF 2)