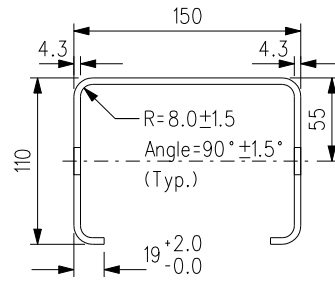
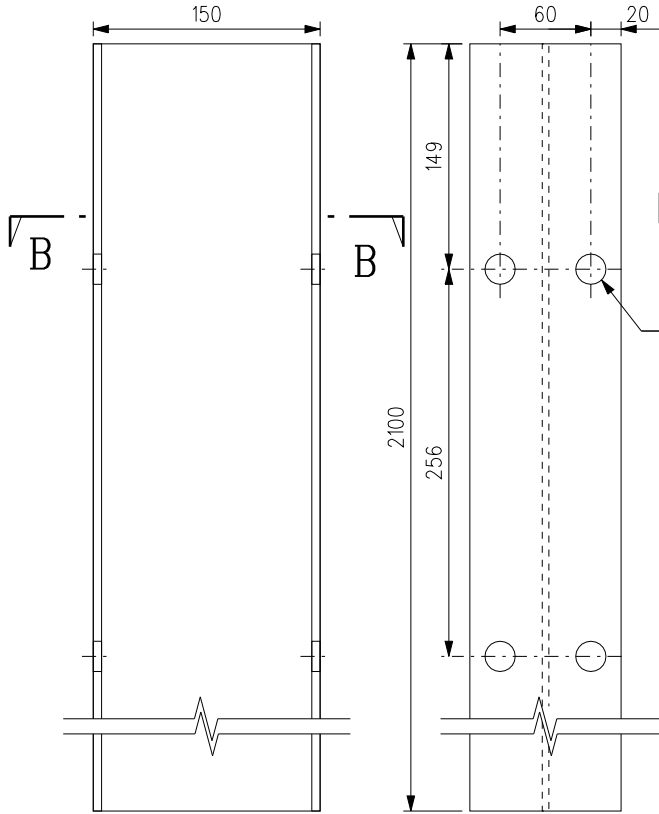


SECTION B - B



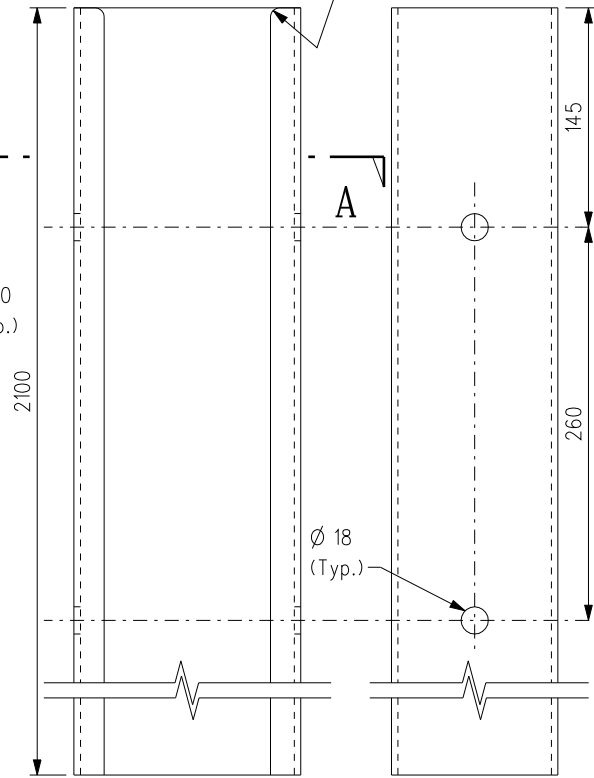
SECTION A - A

Min. 4.0 rad./ chamfer  
Max. 8.0 rad./ chamfer  
(top only)



ELEVATIONS

I-POST 2100 LONG

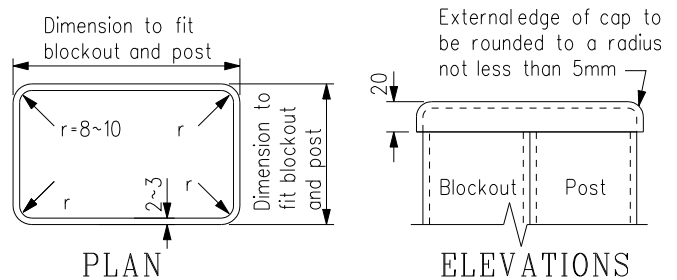


ELEVATIONS

C-POST 2100 LONG

Notes:

1. See drawing H2190 for notes.
2. The base metal for C-post shall be HA300 in accordance with AS/NZS 1594 or the equivalent approved by the Engineer.
3. The base metal for I-post shall be Grade 250 in accordance with AASHTO M 270M/M 270-07 or ASTM A 709/A 709M-06a or the equivalent approved by the Engineer.
4. Capping shall be applied to thrie-beams along footway.
5. Top end of blockout and post to be capped with steel. The steel cap shall be firmly fixed to the post and blockout by not less than 10 spot welds evenly spaced.
6. The steel cap shall be weldable structural steel complying with B.S. 4360 grade 43A.
7. Steel Cap shall be hot dip galvanized to BS EN ISO 1461:1999.
8. All spot weld if applied after hot dip galvanizing shall be covered with zinc rich painting.



PLAN

ELEVATIONS

STEEL CAP

B	Capping details for blockout and post angles and Notes 4 to 8 added.		Mar 11
A	Notes 2 & 3 updated.		Nov 07
	New Issue		Nov 02
REF.	REVISION	SIGNATURE	DATE

THRIE-BEAM -  
TYPICAL DETAILS  
FOR POST

HIGHWAYS DEPARTMENT

REFERENCE

DRAWING No.

CAD

SCALE

1 : 5

H 2195B