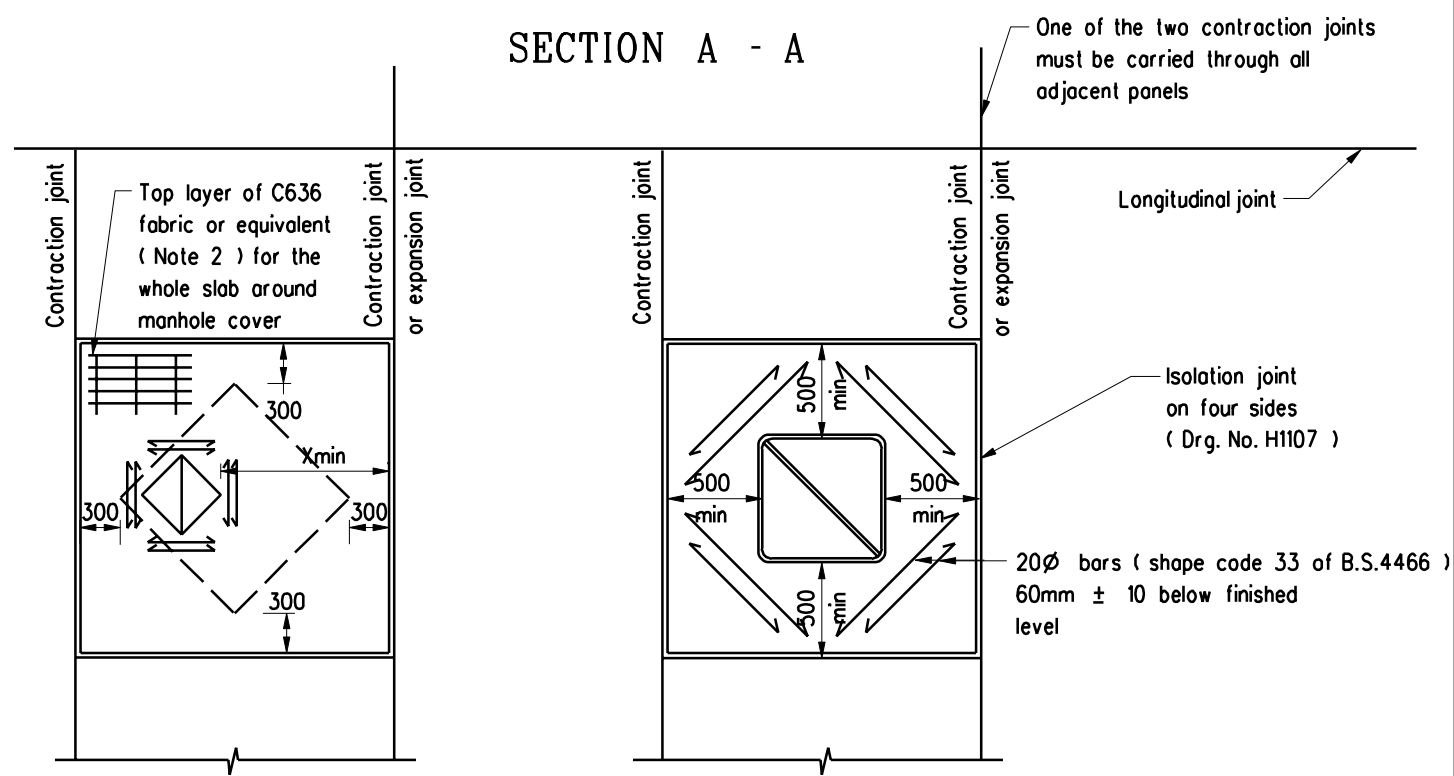


SECTION A - A



PLAN - FOR NON-ORTHOGONAL LAYOUT

PLAN - FOR ORTHOGONAL LAYOUT

Notes:

1. Case 1: Where only manhole shaft protrudes above formation level, Xmin. =500.
Case 2: Where manhole chamber protrudes above formation level, Xmin. = 300 extended beyond edge of underground chamber.
2. Fabric reinforcement shall be required for non-orthogonal box-out slabs only.

	Former Drg. No. H1006A with general revision		June 94
REF.	REVISION	SIGNATURE	DATE

DETAILS OF CONC. ROAD SLAB
AROUND MANHOLES OR UTILITY
PITS (SHEET 2 OF 2)

HIGHWAYS DEPARTMENT

REFERENCE	DRAWING No.	CAD
SCALE Diagrammatic	H 1112	