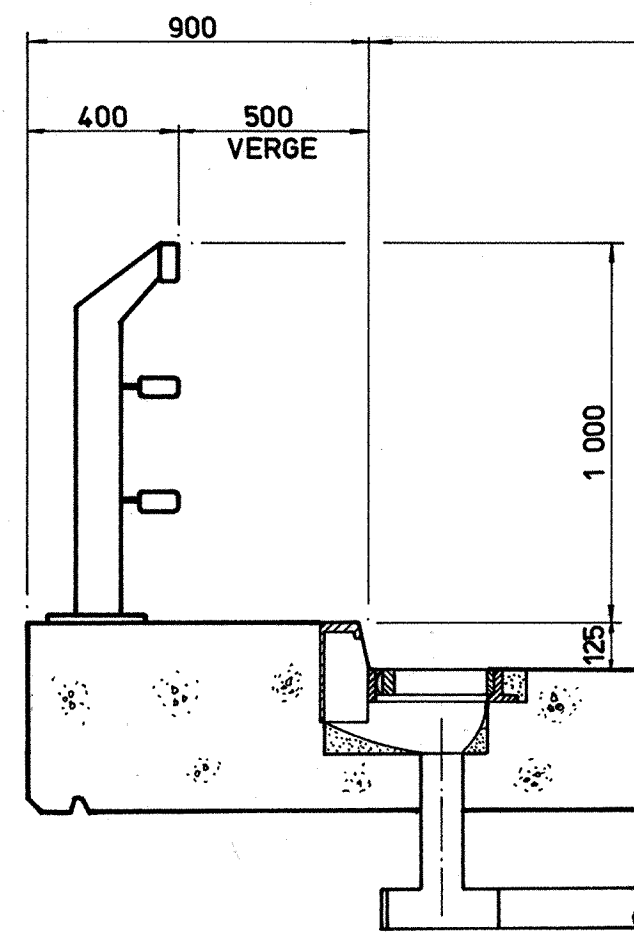
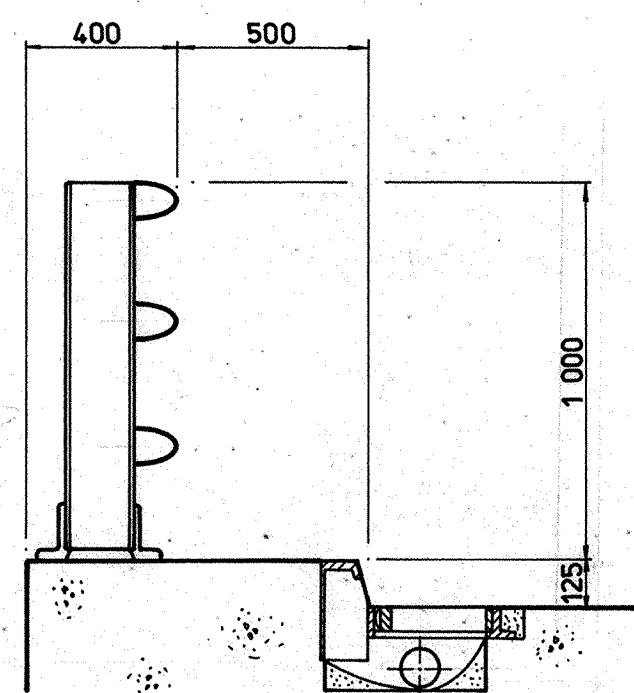


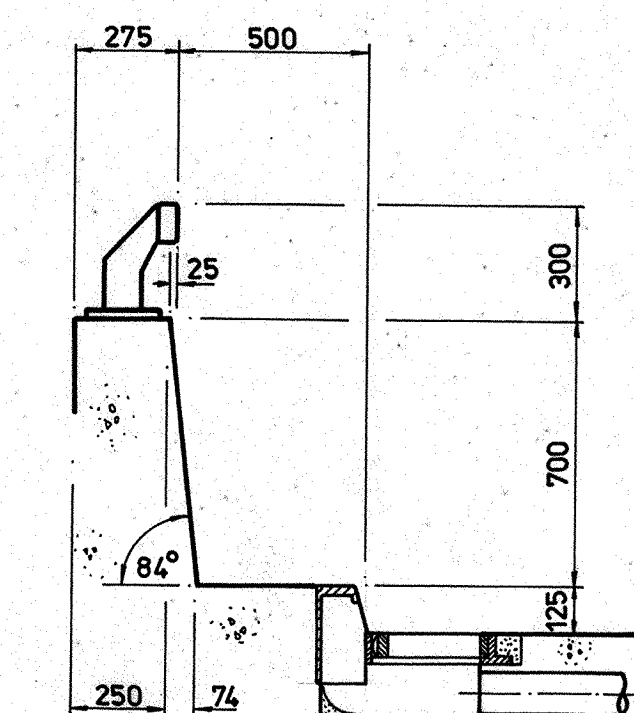
1. STEEL VEHICLE PARAPET WITH RAISED VERGE



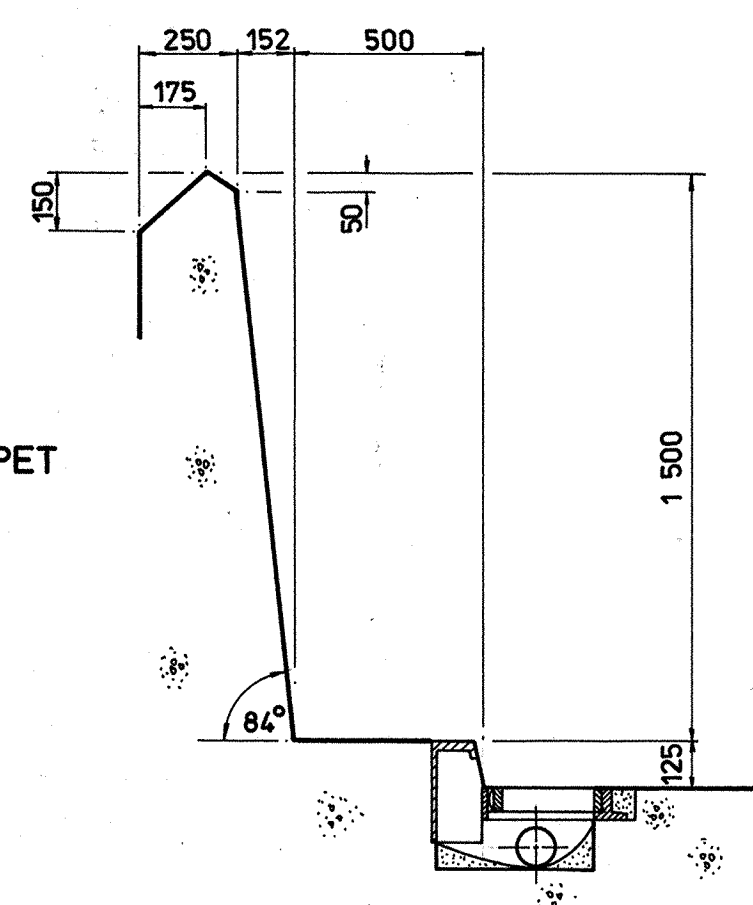
3. ALUMINIUM VEHICLE PARAPET WITH RAISED VERGE



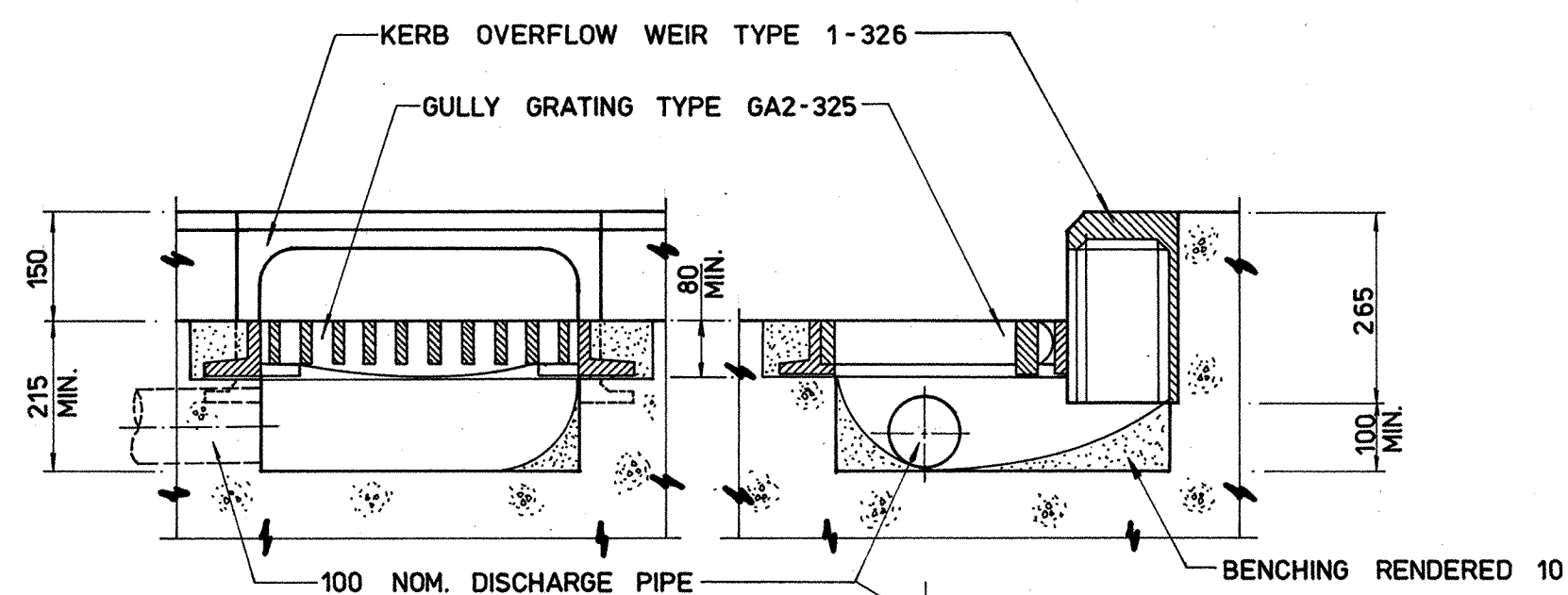
5. PLINTH WITH RAIL AND RAISED VERGE



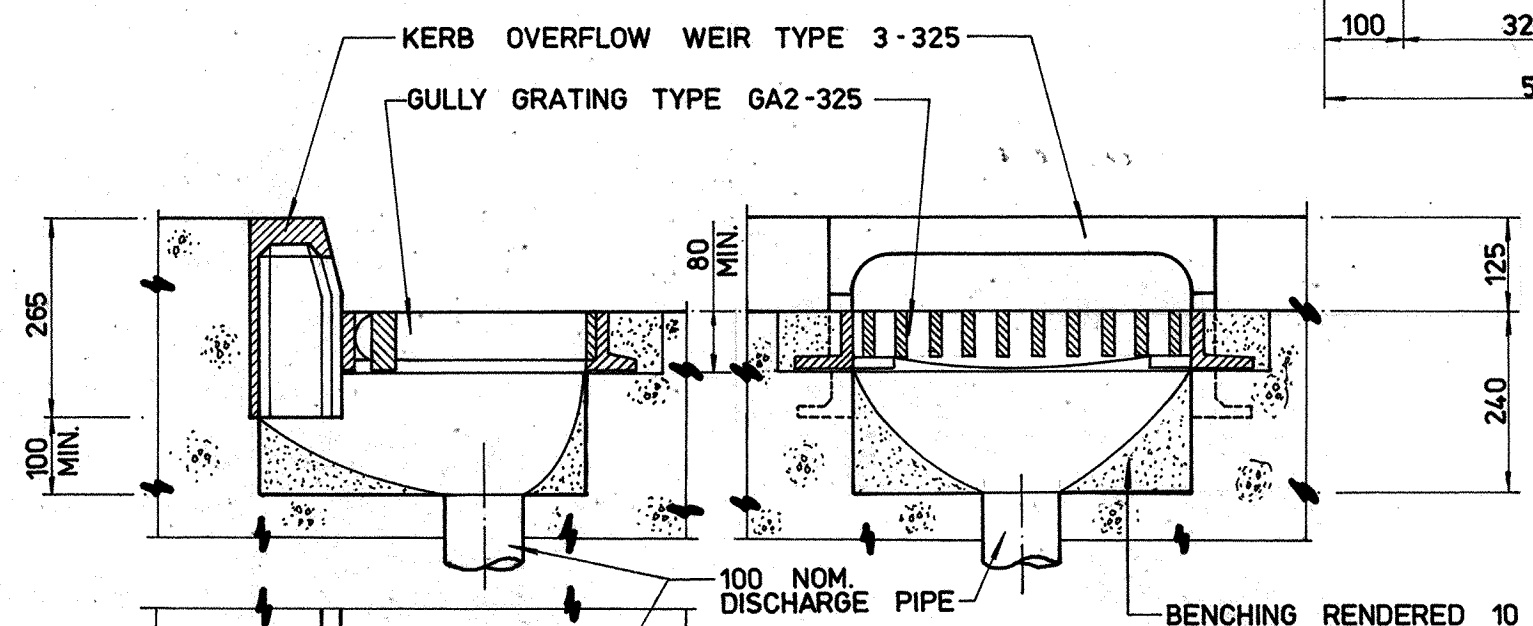
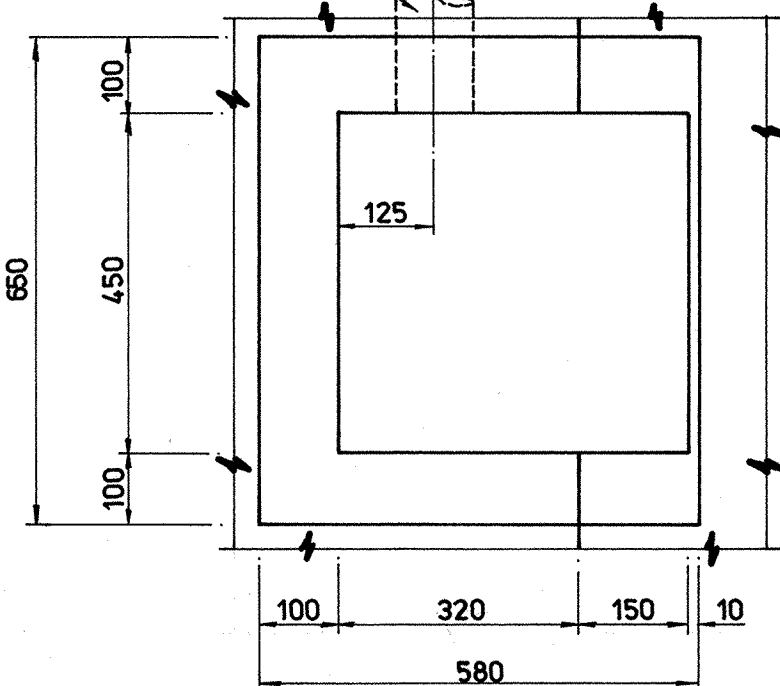
7. HIGH CONTAINMENT PARAPET WITH RAISED VERGE



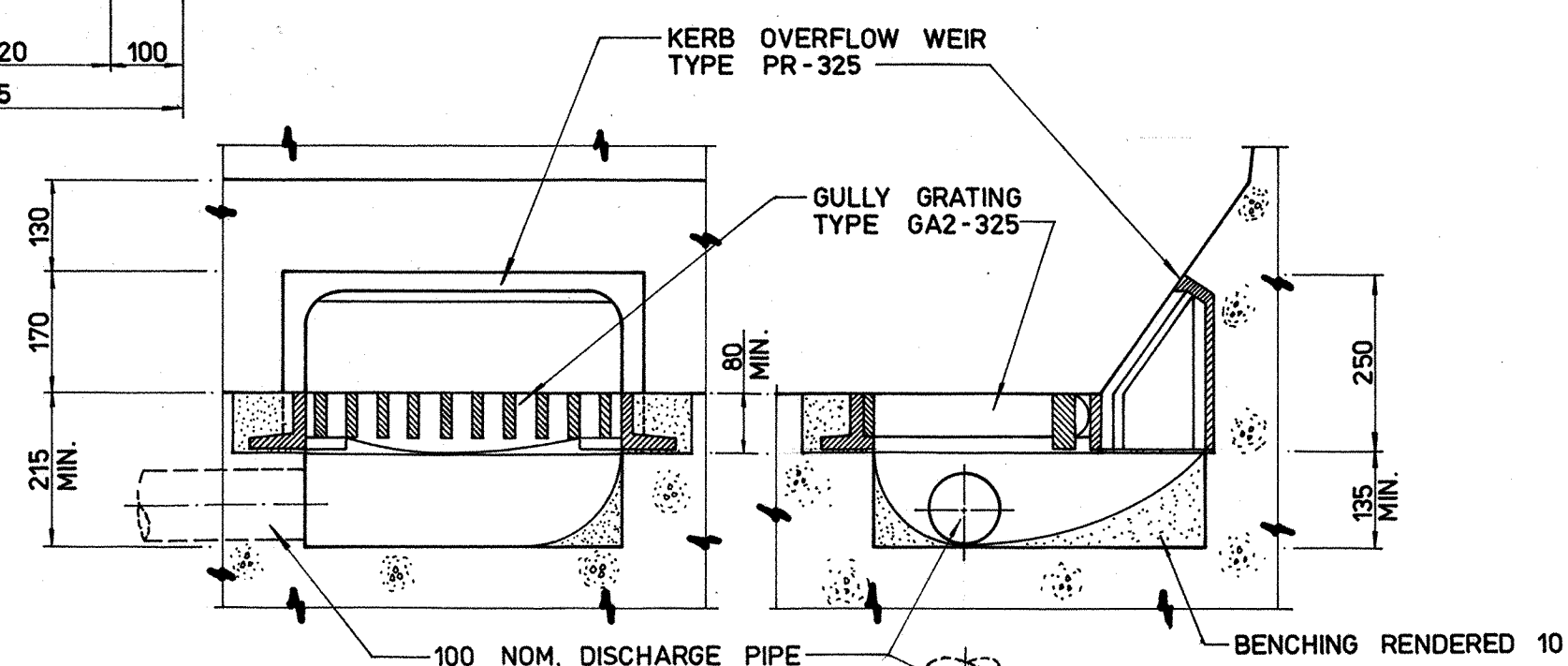
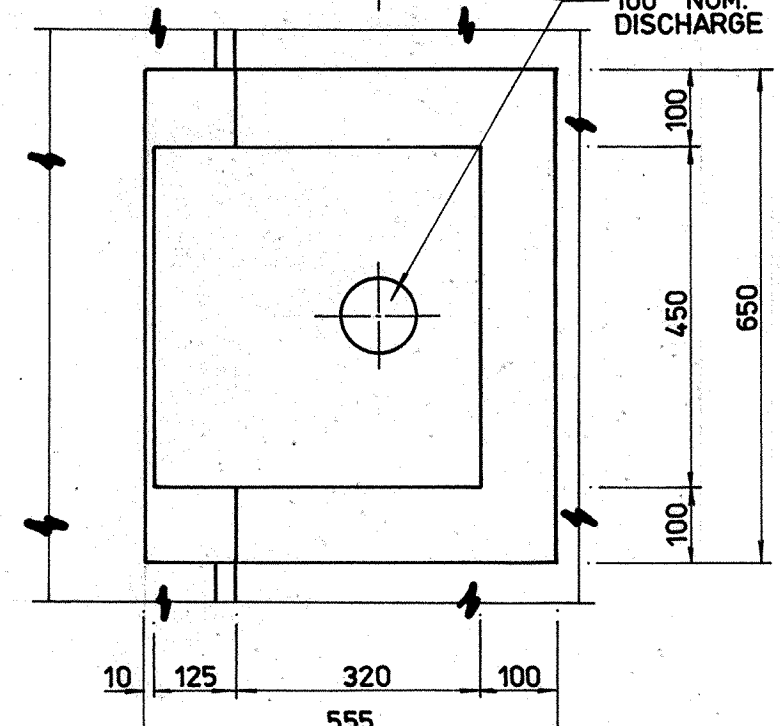
CARRIAGEWAY



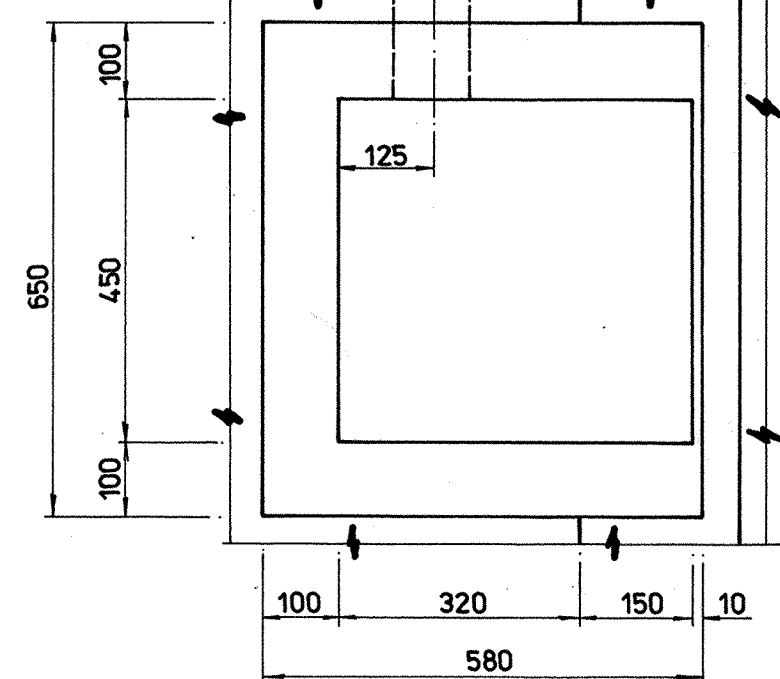
GULLY FOR USE WITH TYPE 2 AND 4 EDGE DETAILS ( PLAN BEFORE INSTALLATION OF GRATING AND WEIR )  
SCALE - 1 : 10



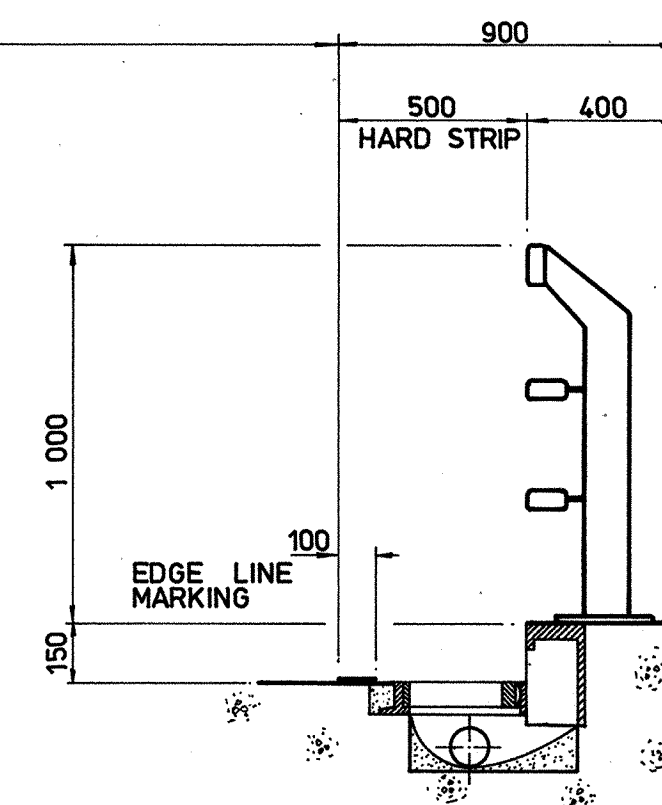
GULLY FOR USE WITH TYPE 1, 3, 5 AND 7 EDGE DETAILS ( PLAN BEFORE INSTALLATION OF GRATING AND WEIR )  
SCALE - 1 : 10



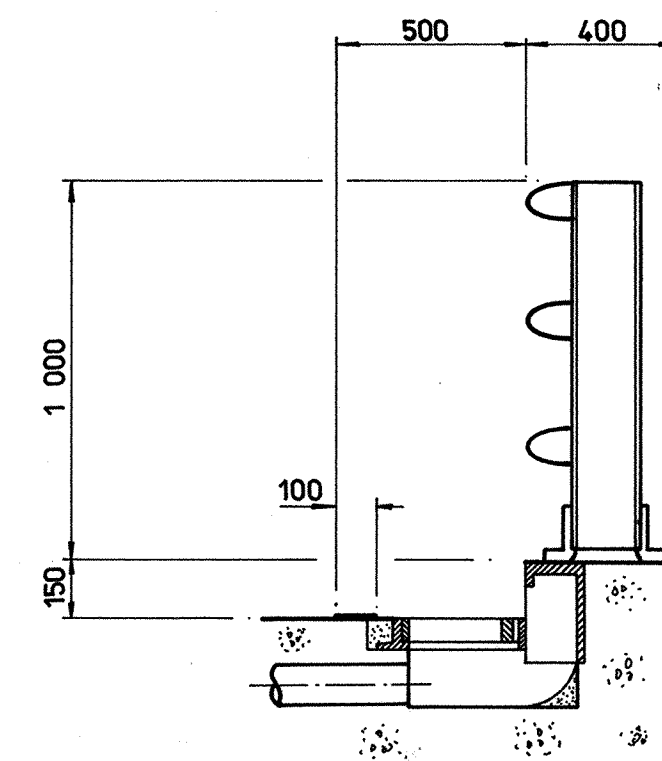
GULLY FOR USE WITH TYPE 6 AND TYPE 8 EDGE DETAILS ( PLAN BEFORE INSTALLATION OF GRATING AND WEIR )  
SCALE - 1 : 10



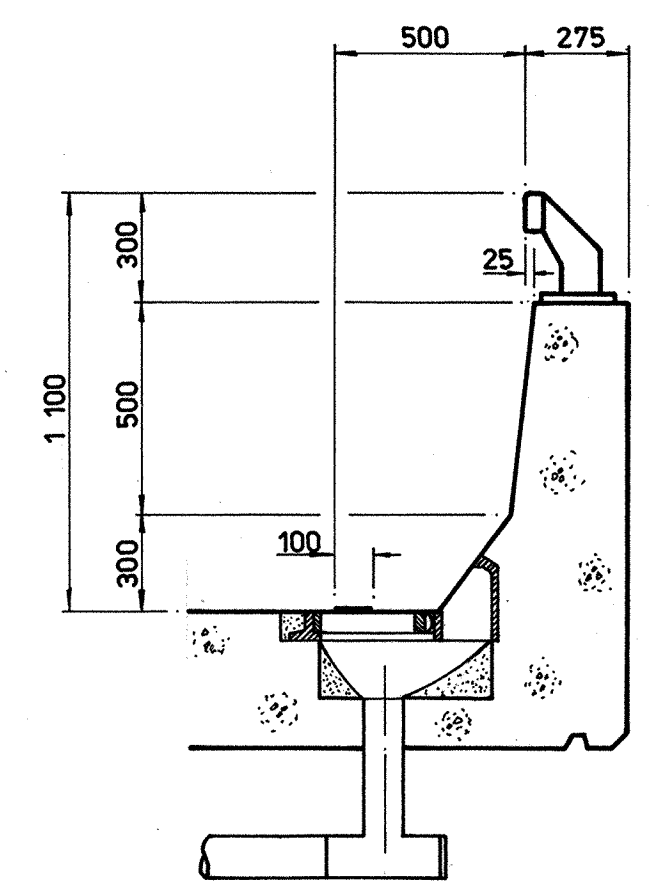
2. STEEL VEHICLE PARAPET WITH FLUSH HARD STRIP



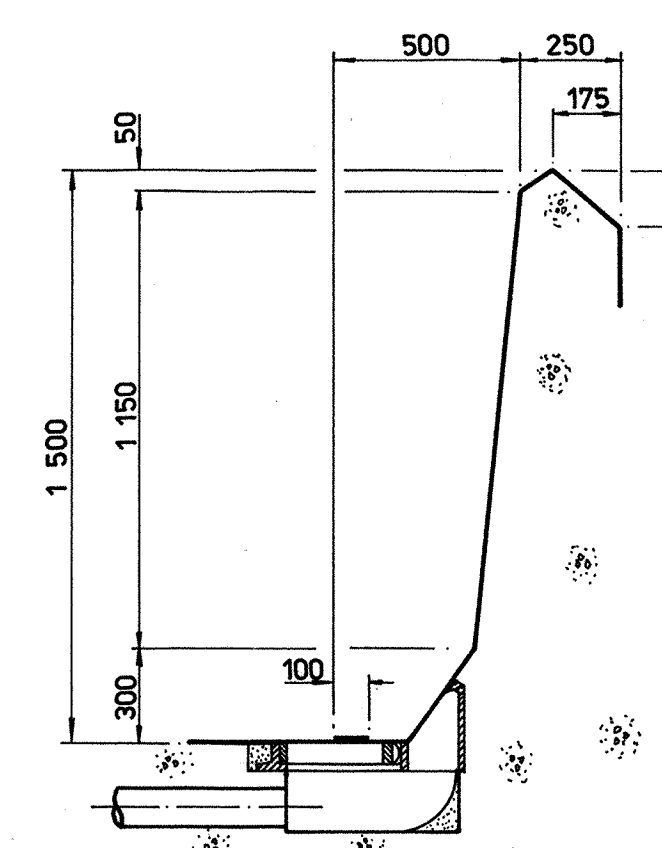
4. ALUMINIUM VEHICLE PARAPET WITH FLUSH HARD STRIP



6. PROFILED PLINTH WITH RAIL AND FLUSH HARD STRIP



8. HIGH CONTAINMENT PROFILED PARAPET WITH FLUSH HARD STRIP



- NOTES:
1. DIMENSIONS ARE IN MILLIMETRES.
  2. EDGE DETAILS ARE TAKEN FROM DRG. No. S SD 63.
  3. UPSTAND FOR STEEL AND ALUMINIUM VEHICLE PARAPETS IS GIVEN AS 100 ON DRG No. S SD 63 BUT FOR 1' WITH KERB OVERFLOW WEIRS ILLUSTRATED HERE AN UPSTAND OF ABOUT 150 IS REQUIRED.
  4. DETAILS ARE GIVEN AS A GUIDE TO ACCEPTABLE PRACTICE AND ARE NOT MANDATORY.
  5. DISCHARGE PIPES SHOULD BE ANGLED IN MOST CONVENIENT DIRECTION AND BENCHING ADJUSTED TO SUIT.

no.	date	description	initial
REVISION			
		name	date
surveyed			
designed			
drawn			
traced		S. K. Chu	7.10.81
checked			

approved  
*S. K. Chu*  
9-10-81

contract no.  
file no.  
project no.

contract  
**STORMWATER DRAINAGE FOR HIGHWAY STRUCTURES**

drawing title  
**TYPICAL INTAKES**

drawing no. **S SD 83**  
scale **1:20 OR AS SHOWN**

office  
**STRUCTURES DIVISION**

**HIGHWAYS DEPARTMENT**  
HONG KONG  
路政署