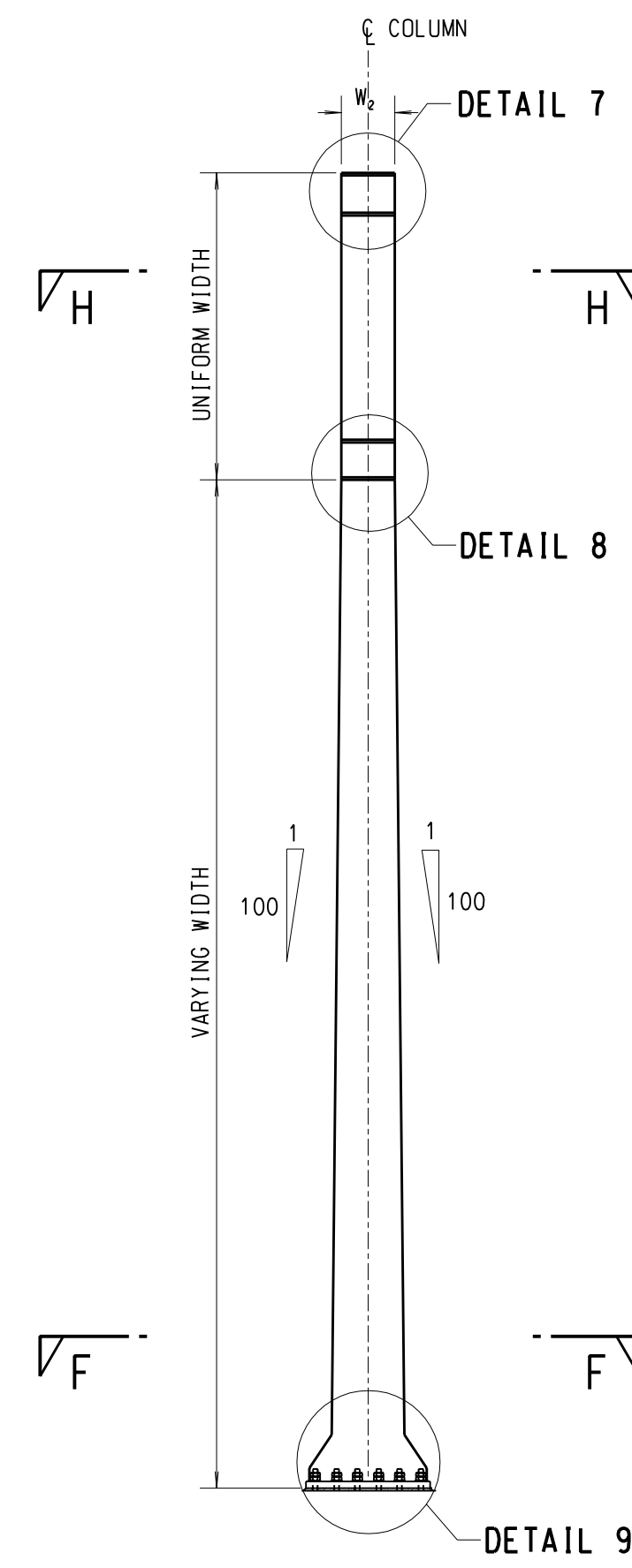
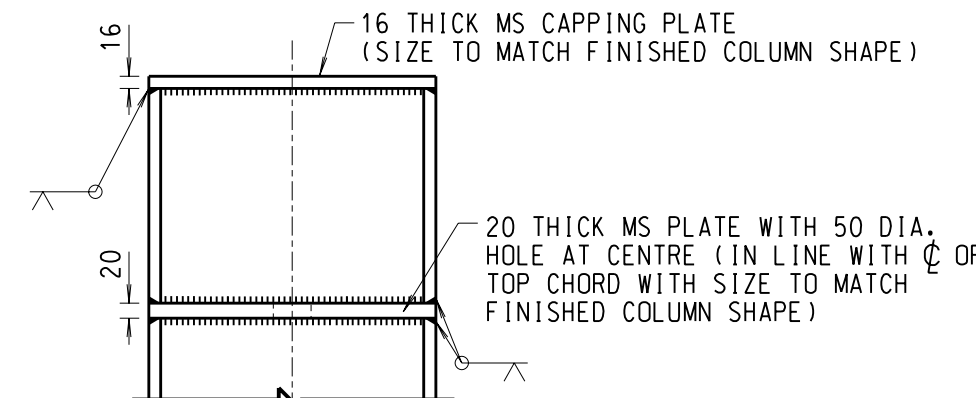


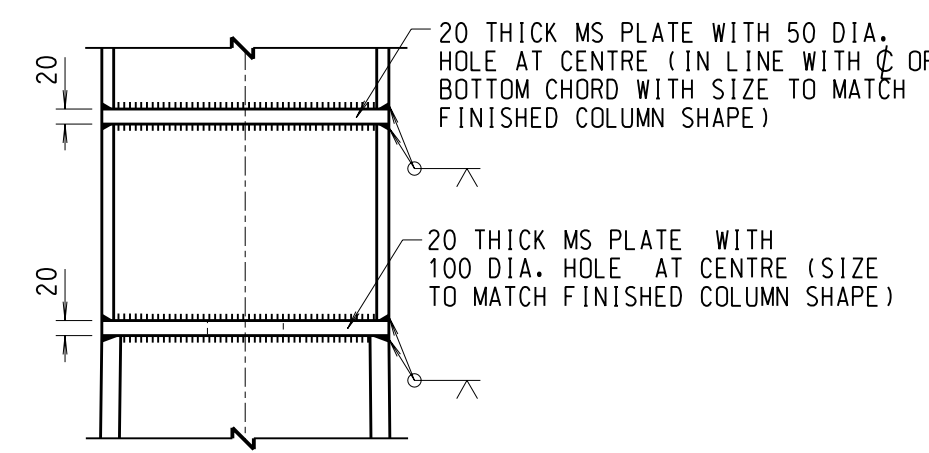
ELEVATION OF GANTRY COLUMN
SCALE 1:50



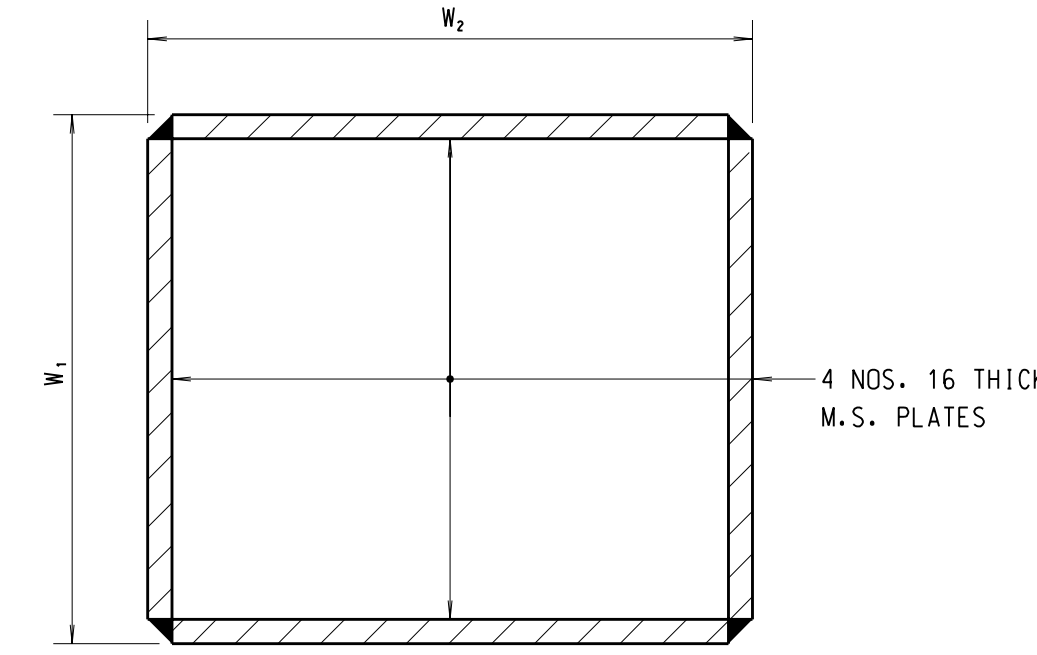
VIEW B
SCALE 1:50



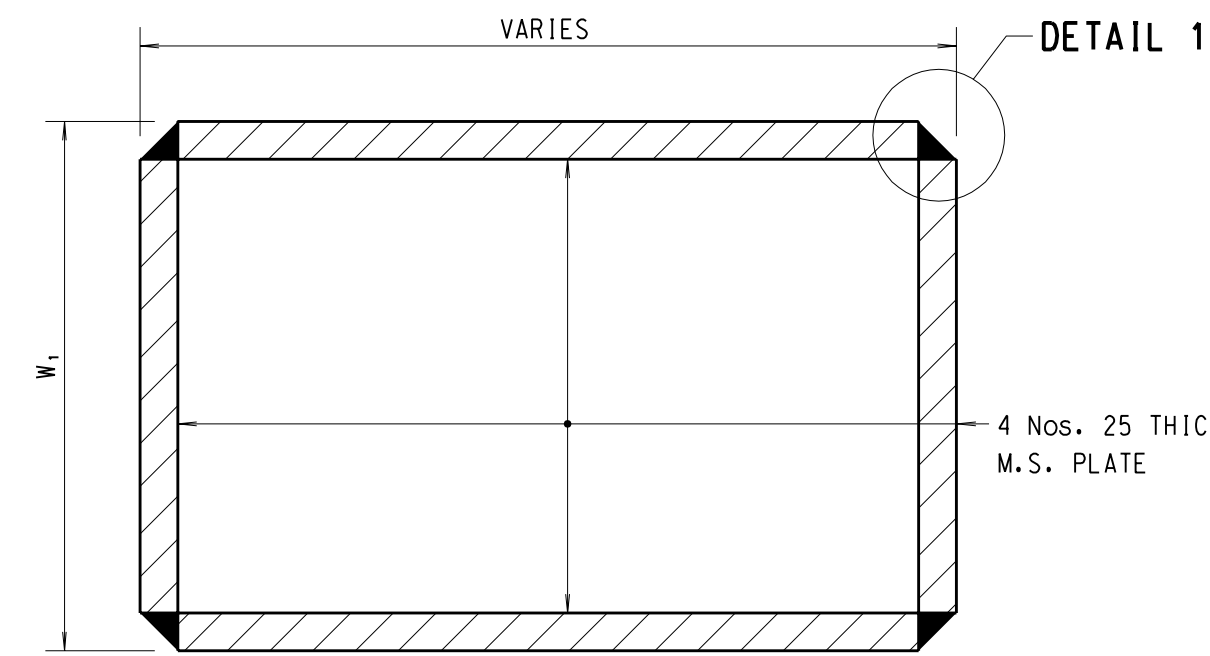
DETAIL 7
SCALE 1:10



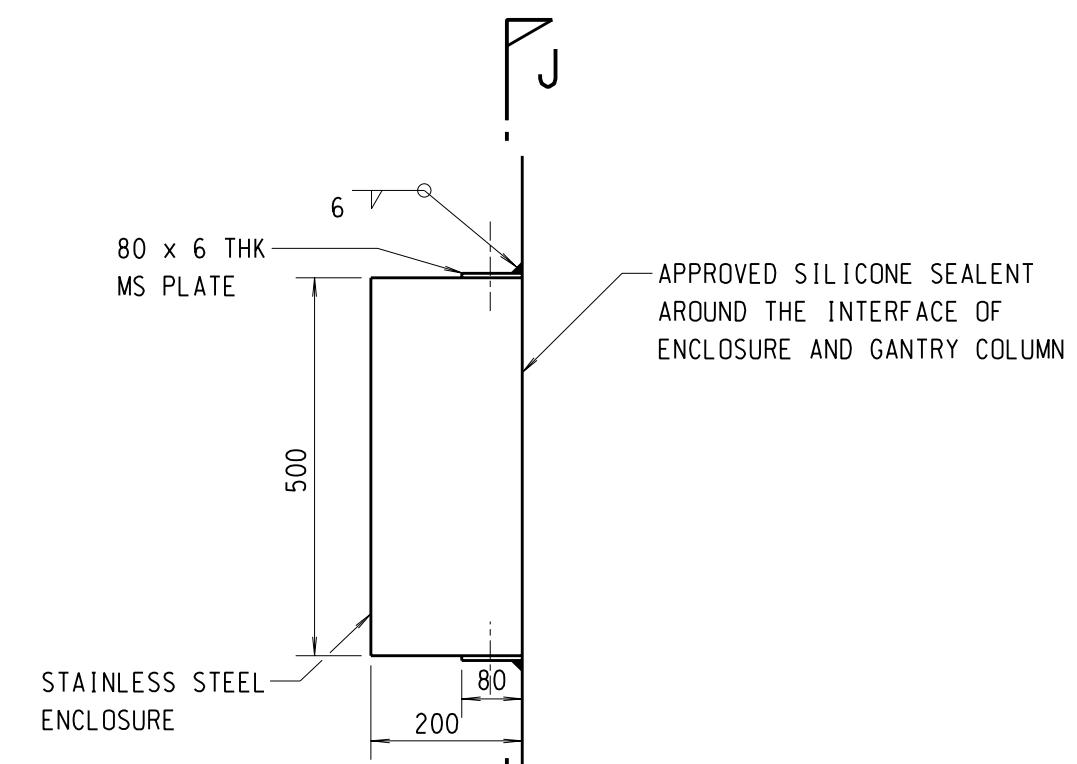
DETAIL 8
SCALE 1:10



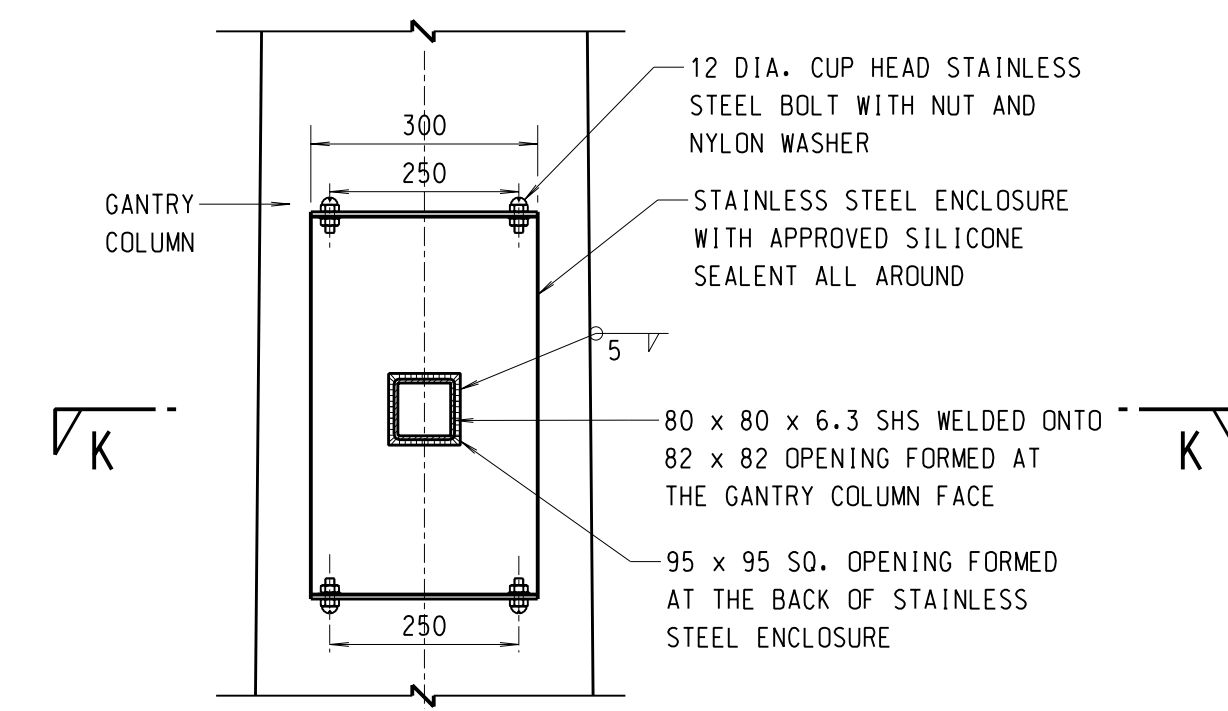
SECTION H-H
SCALE 1:5



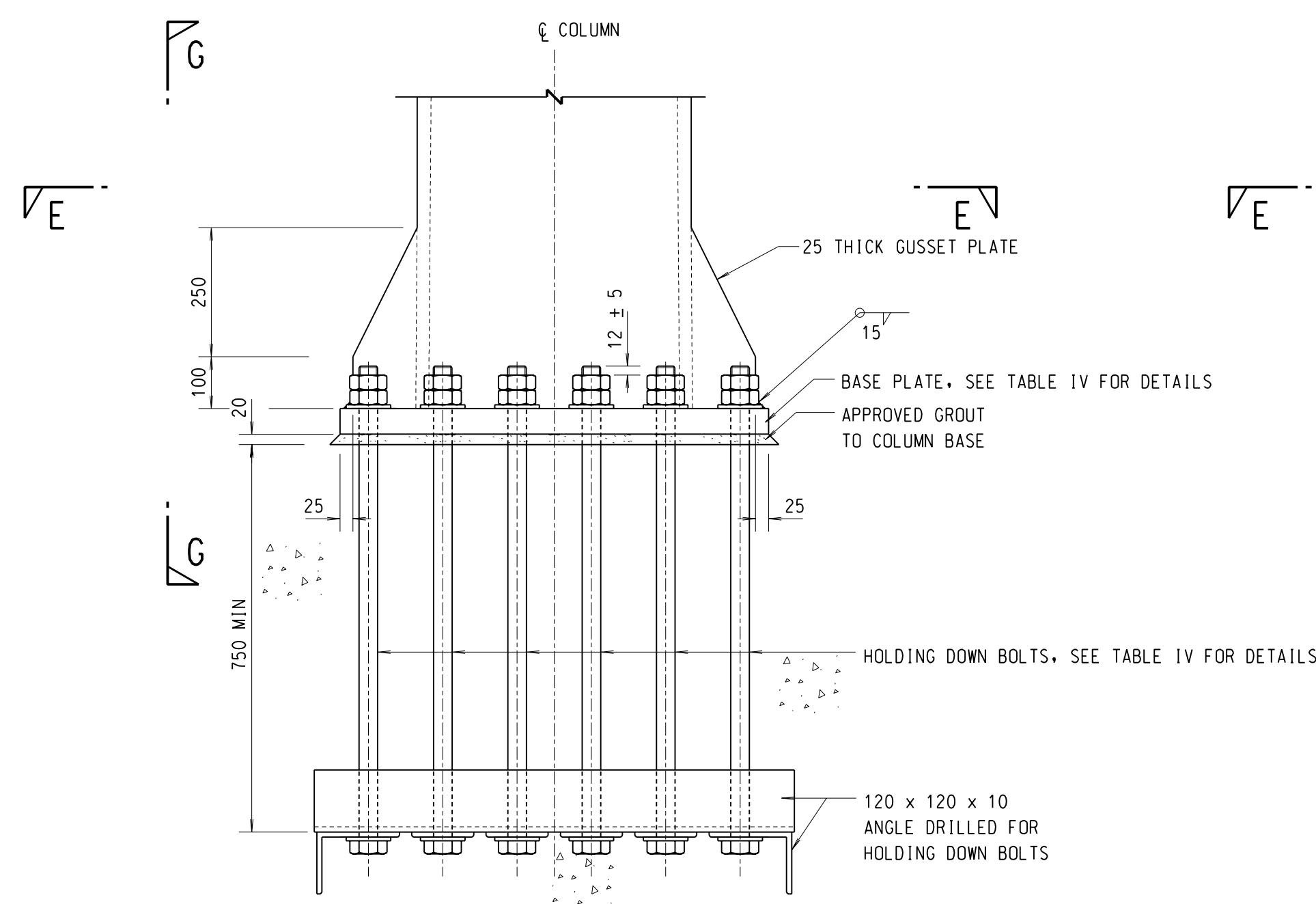
SECTION F-F
SCALE 1:5



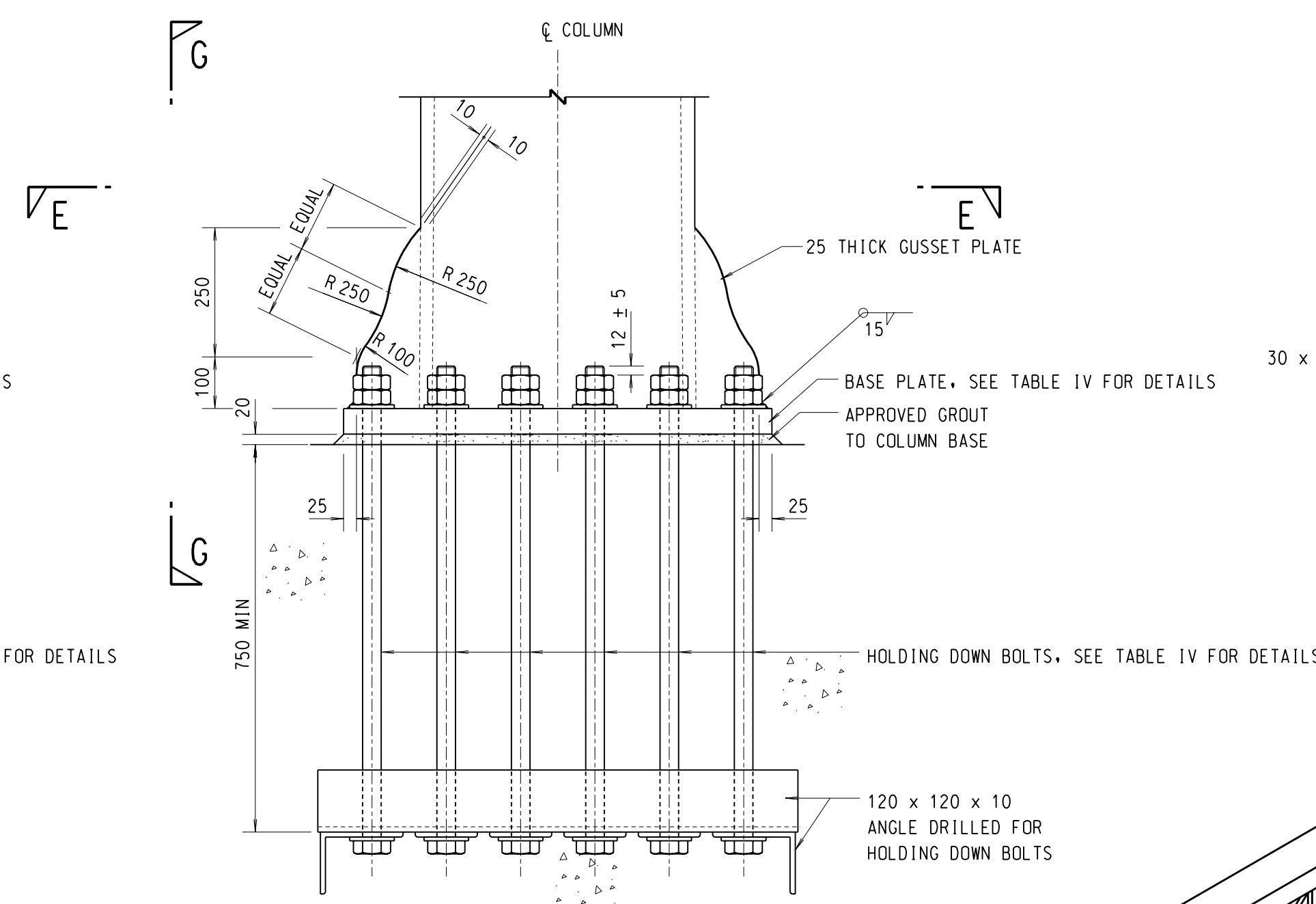
DETAIL 10
SCALE 1:10



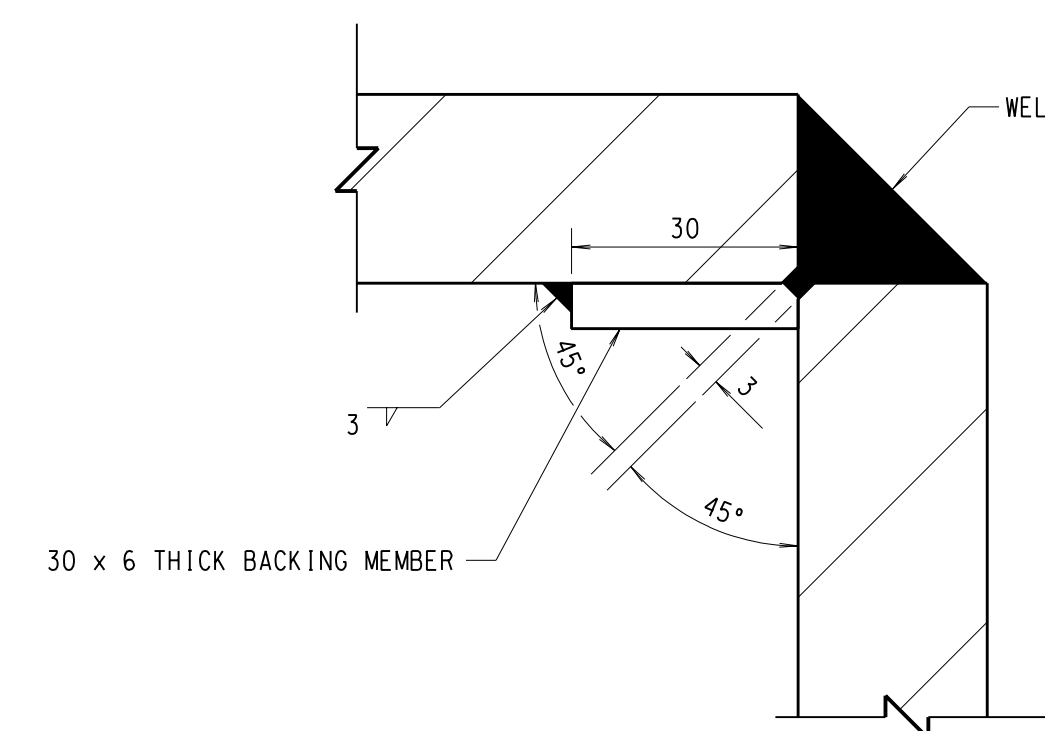
SECTION J-J
SCALE 1:10



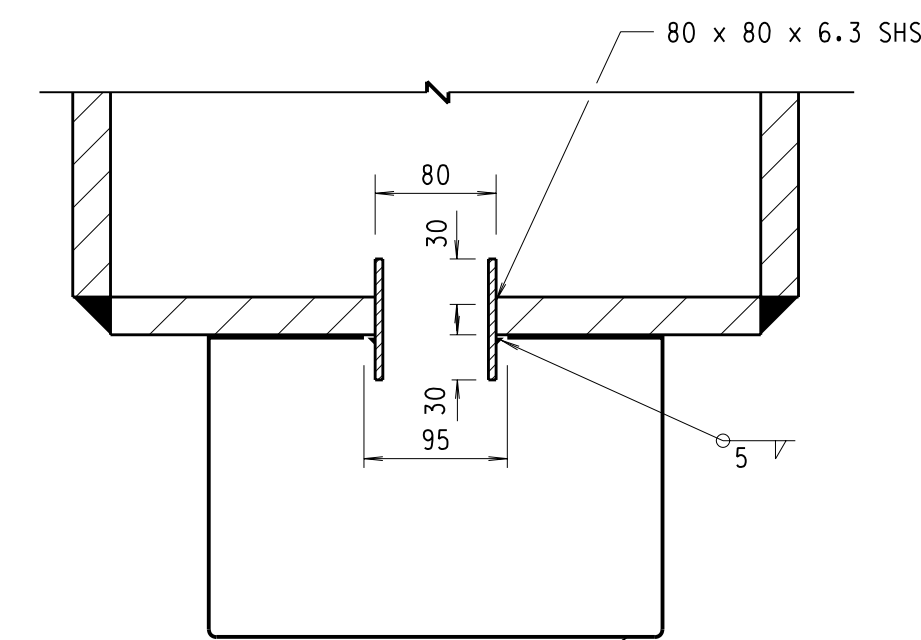
DETAIL 9
TYPICAL ANCHORAGE DETAILS
(GUSSET PLATE BURIED)
SCALE 1:10



DETAIL 9
TYPICAL ANCHORAGE DETAILS
(GUSSET PLATE EXPOSED)
SCALE 1:10



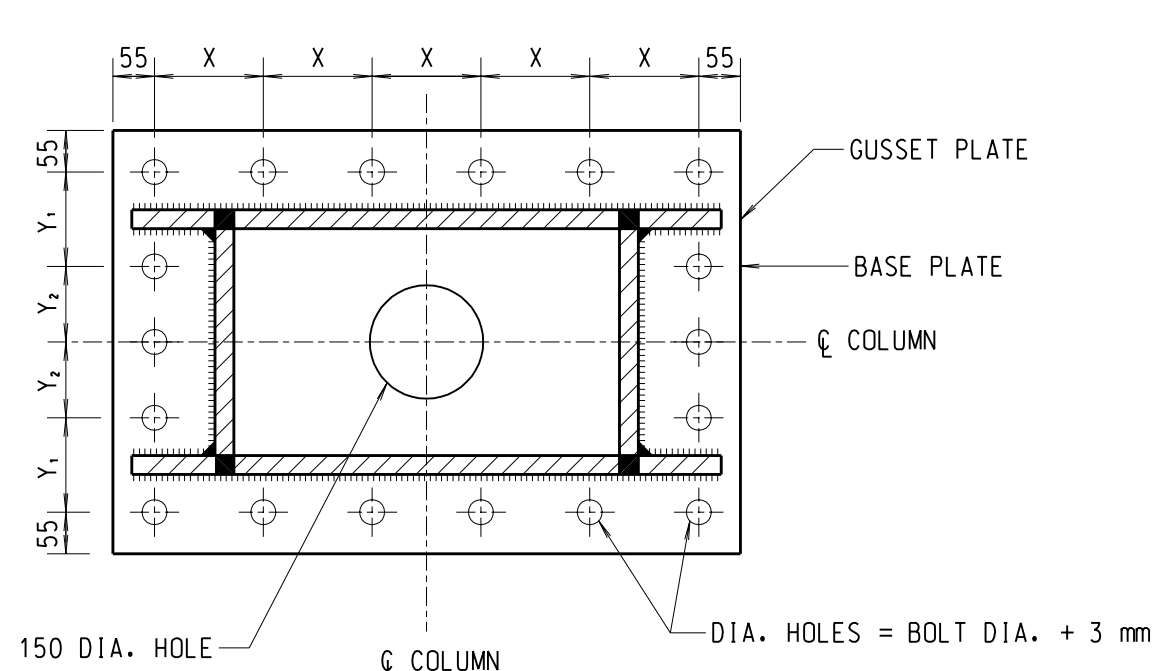
DETAIL 11
SCALE 1:1



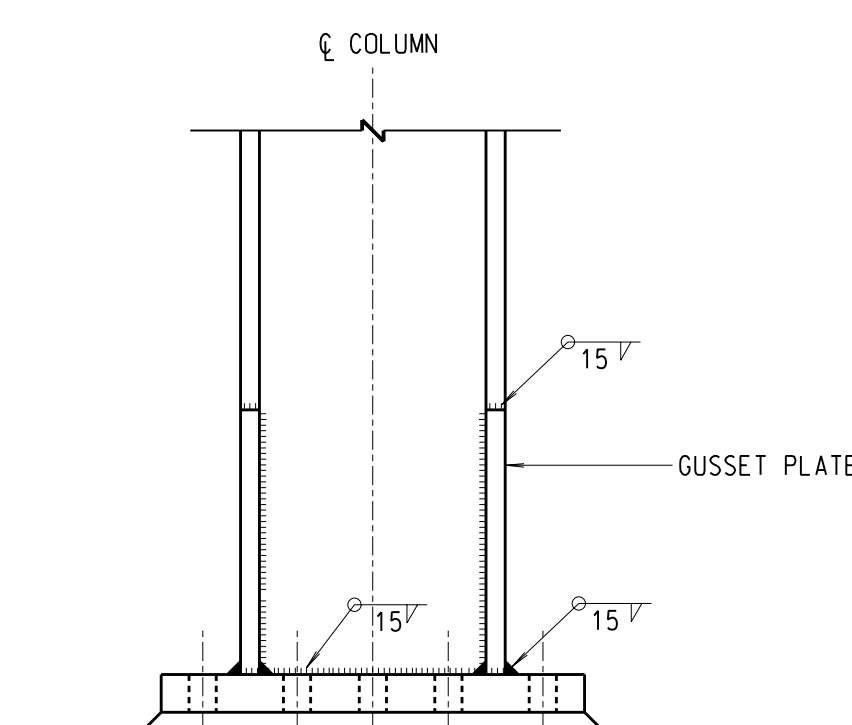
SECTION K-K
SCALE 1:5

GANTRY TYPE	GANTRY COLUMN		BASE PLATE (mm)	HOLDING DOWN BOLTS				
	W ₁ (mm)	W ₂ (mm)		DIA.	No.	X (mm)	Y ₁ (mm)	Y ₂ (mm)
A	300	320	780 x 500 x 40 THICK	M30	18	134	115	80
B	300	350	780 x 500 x 40 THICK	M30	18	134	115	80
C	350	370	830 x 560 x 40 THICK	M36	18	144	125	100
D	350	400	830 x 560 x 50 THICK	M36	18	144	125	100

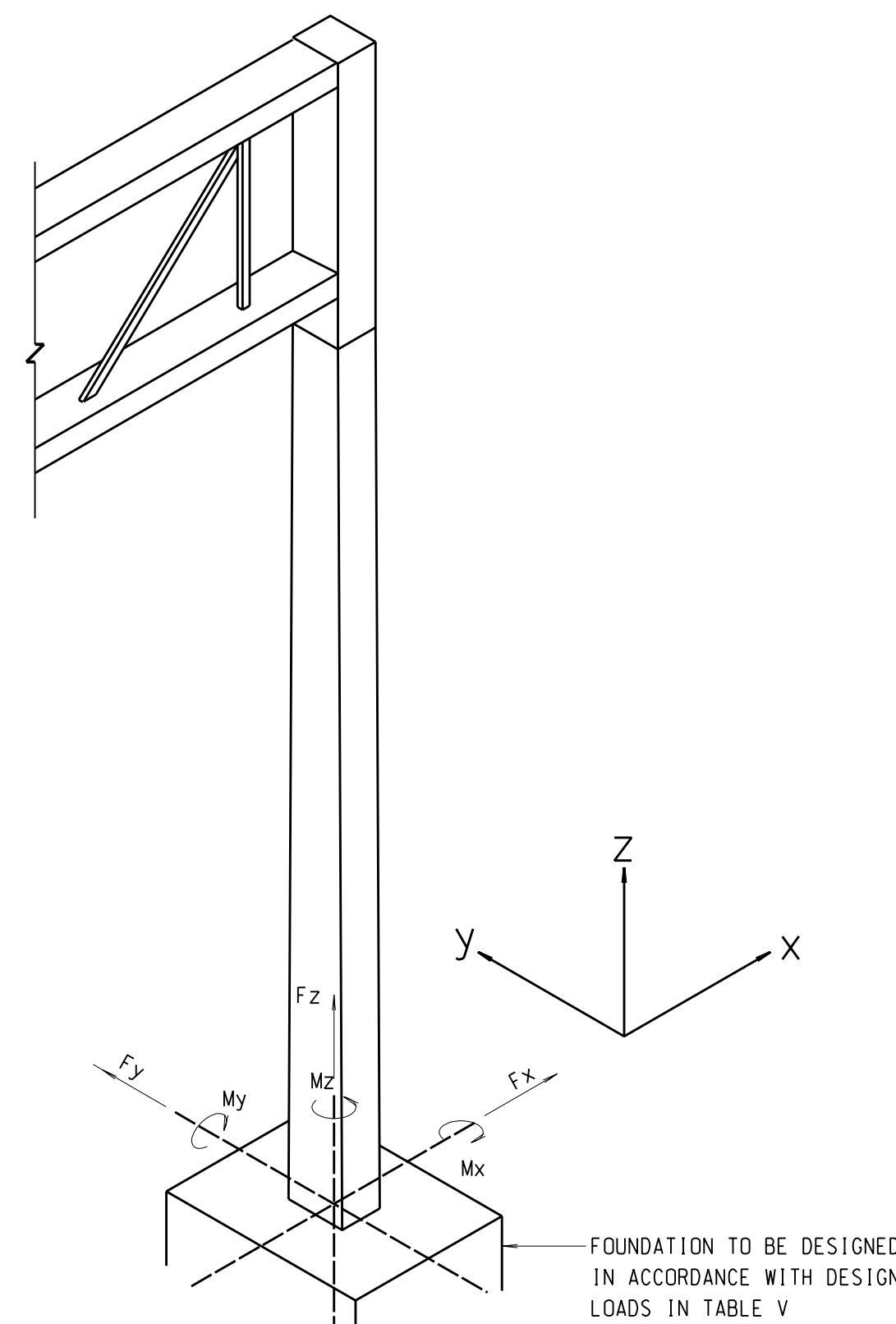
TABLE IV - GANTRY COLUMN AND ANCHORAGE DETAILS



SECTION E-E
(BOLTS NOT SHOWN)
SCALE 1:10



SECTION G-G
(BOLTS NOT SHOWN)
SCALE 1:10



ISOMETRIC VIEW
N.T.S

GANTRY TYPE	LOAD CASE	FORCE (kN)			MOMENT (kNm)		
		F _x	F _y	F _z	M _x	M _y	M _z
A	1	5	70	-70	-600	5	80
	2	25	35	-80	-300	80	40
	3	50	0	-70	0	130	0
B	1	5	80	-80	-700	10	120
	2	25	40	-90	-350	100	60
	3	50	0	-80	0	130	0
C	1	5	90	-100	-800	15	150
	2	30	45	-110	-400	110	75
	3	50	0	-100	0	130	0
D	1	5	120	-120	-1000	20	220
	2	35	60	-130	-500	130	110
	3	50	0	-120	0	130	0

TABLE V - UNFACTORED DESIGN LOADS AT BASE OF GANTRY COLUMNS

- NOTES : 1. LOAD CASE 1 CORRESPONDS TO WIND LOAD ON SIGN FACE AT 'y' DIRECTION PLUS PERMANENT LOADS.
LOAD CASE 2 CORRESPONDS TO COMBINED EFFECT OF WIND LOAD ON SIGN FACE AT 'x' AND 'y' DIRECTIONS PLUS PERMANENT LOADS.
LOAD CASE 3 CORRESPONDS TO VEHICLE COLLISION LOAD ON GANTRY COLUMN AT 'x' DIRECTION PLUS PERMANENT LOADS.
2. FOUNDATION SHALL BE DESIGNED FOR ALL LOAD CASES. EFFECTS OF WIND AND COLLISION LOADS ACTING AT OPPOSITE DIRECTIONS SHALL ALSO BE CONSIDERED FOR EACH LOAD CASE.
3. WIND PRESSURE OF 2.8 kN/m² IS ADOPTED IN THE DESIGN.

NOTES:
1. THIS DRAWING SHALL BE READ IN CONJUNCTION WITH DRG. NO. SSD151(1)

no.	date	description	initial
REVISION			
		name	signature
designed	K.K. LEE	SIGNED	NOV 01
drawn	T.M. LEE	SIGNED	NOV 01
senior technical officer	P.S. CHAN	SIGNED	SEP 02
project engineer	K.K. LEE	SIGNED	SEP 02
senior engineer	W.C. CHAN	SIGNED	SEP 02
approved	SIGNED R.K.W. WONG		SEP 2002
		Chief Highway Engineer	date

contract no.
file no.
project no.
contract

drawing title
SIGN GANTRY

SHEET 3 OF 4
drawing no. SSD 151(3)
scale AS SHOWN

office
STRUCTURES DIVISION

