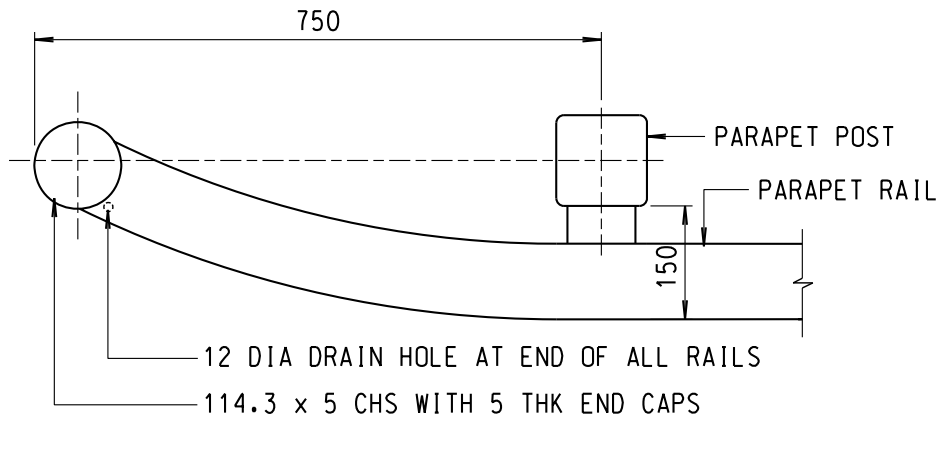
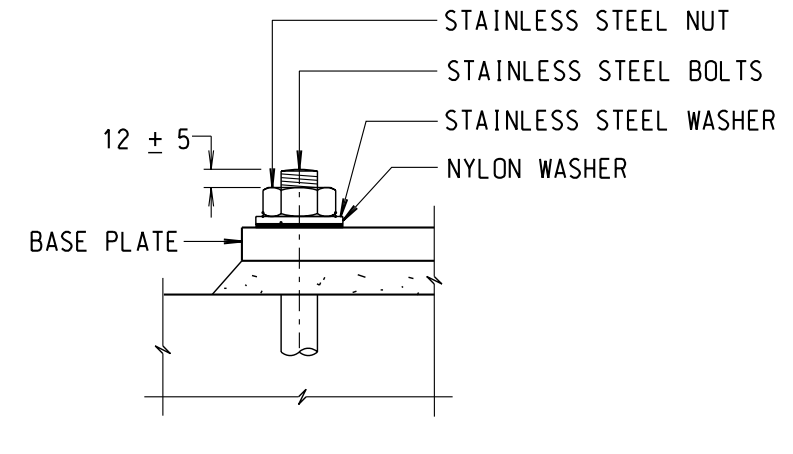


FRONT ELEVATION
SCALE 1:25



PLAN OF END DETAIL
SCALE 1:10



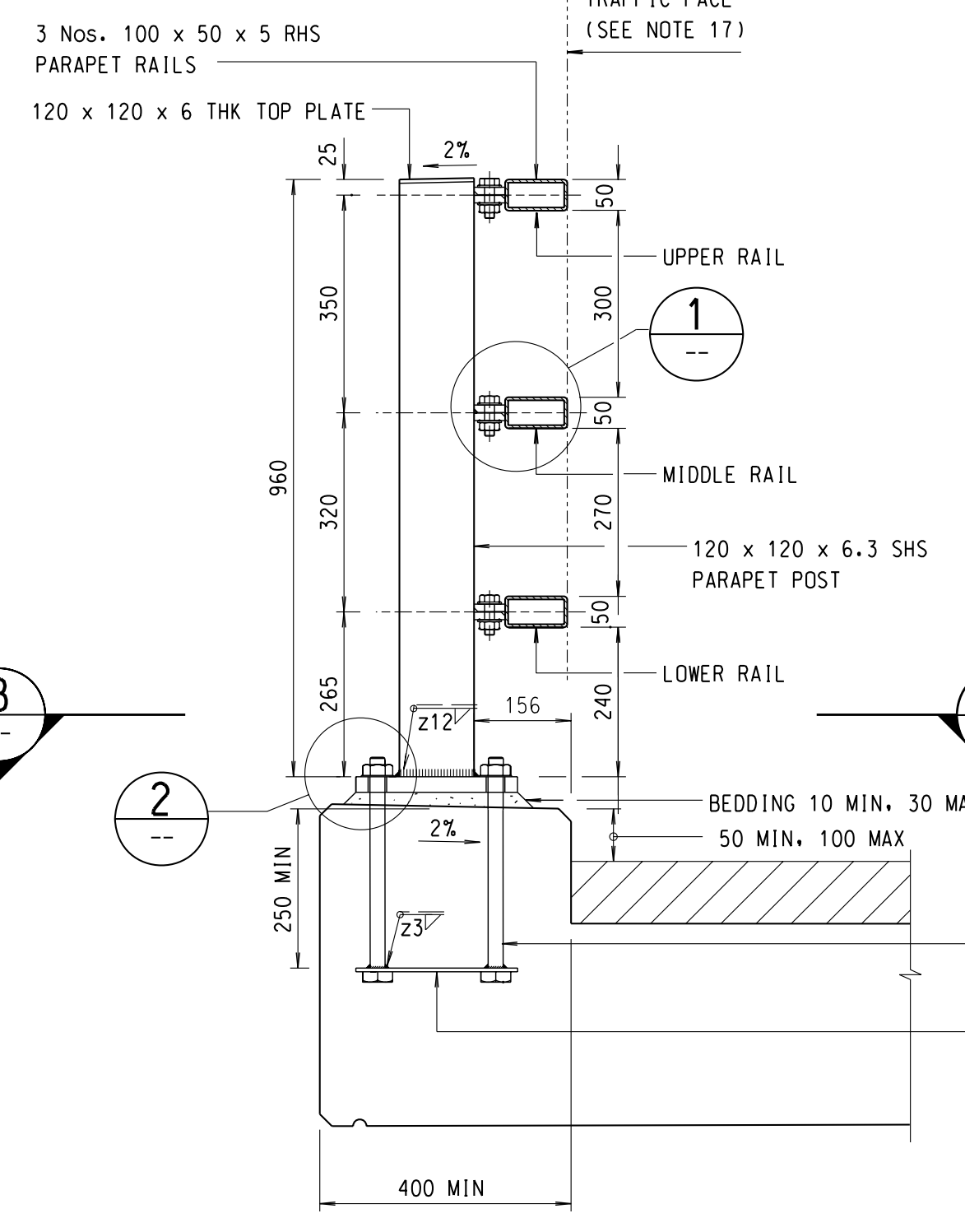
DETAIL
SCALE 1:5

16. AFTER FABRICATION, ALL STEELWORK SHALL BE PAINTED WITH THE FOLLOWING PAINT SYSTEM:
LIFE TO FIRST MAINTENANCE : 5 - 10 YEARS.
PRETREATMENT : TWO-PACK ETCH PRIMER: OR BRITISH RAIL "T-WASH" AS SPECIFIED IN BS5493, SECTION 2, CLAUSE 11.3.2
PRIMER : CHLORINATED RUBBER ZINC PHOSPHATE PRIMER, 70um MINIMUM TOTAL DRY-FILM THICKNESS.
UNDERCOAT : MICACEOUS IRON OXIDE CHLORINATED RUBBER UNDERCOAT, 100um MINIMUM TOTAL DRY-FILM THICKNESS.
FINISH : CHLORINATED RUBBER FINISH COAT THAT IS RESISTANT TO FISH OIL AND OTHER ANIMAL AND VEGETABLE OILS, 60um MINIMUM TOTAL DRY-FILM THICKNESS.

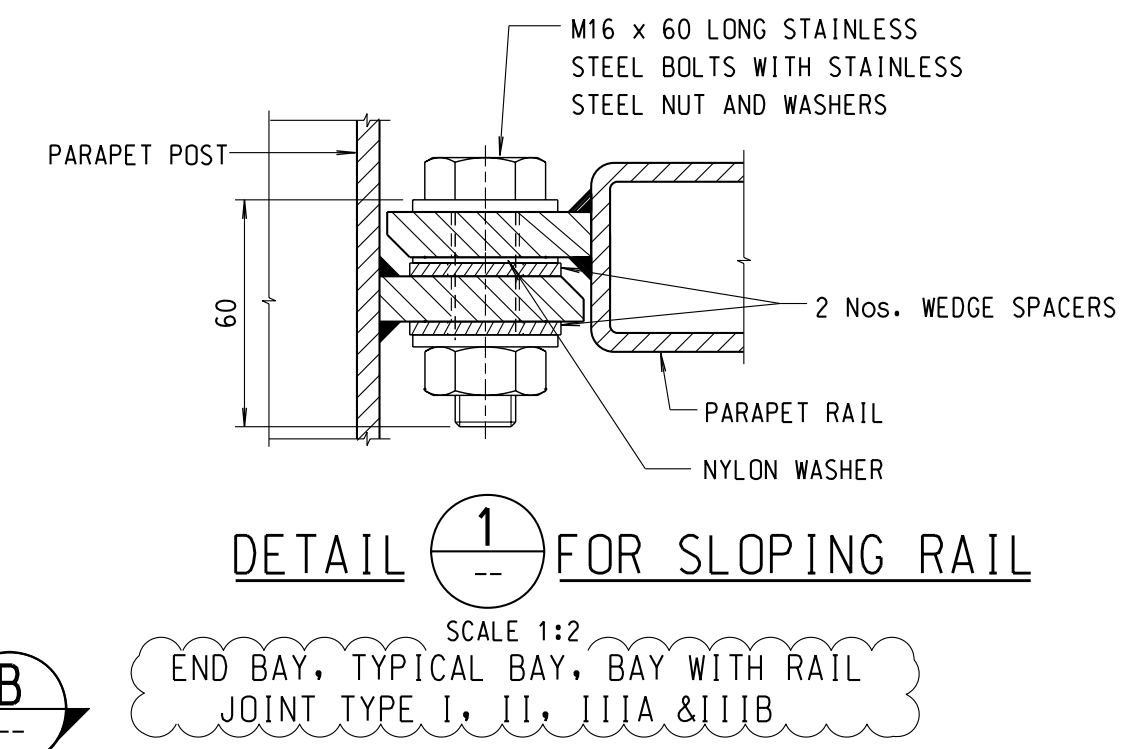
17. THE TRAFFIC FACE OF RAILS SHALL BE SET IN LINE WITH THE EDGE OF PLINTH WITHIN THE FOLLOWING TOLERANCES:
(i) UPPER RAIL ± 25 mm
(ii) MIDDLE RAIL ± 3 mm
(iii) LOWER RAIL $- 25$ mm
(+VE TOWARDS TRAFFIC; -VE AWAY FROM TRAFFIC)

18. CONNECTION DETAILS OF STEEL PARAPET TO ROADSIDE BARRIER SHALL BE IN ACCORDANCE WITH HYD GUIDELINES NO-HO/GN/10.

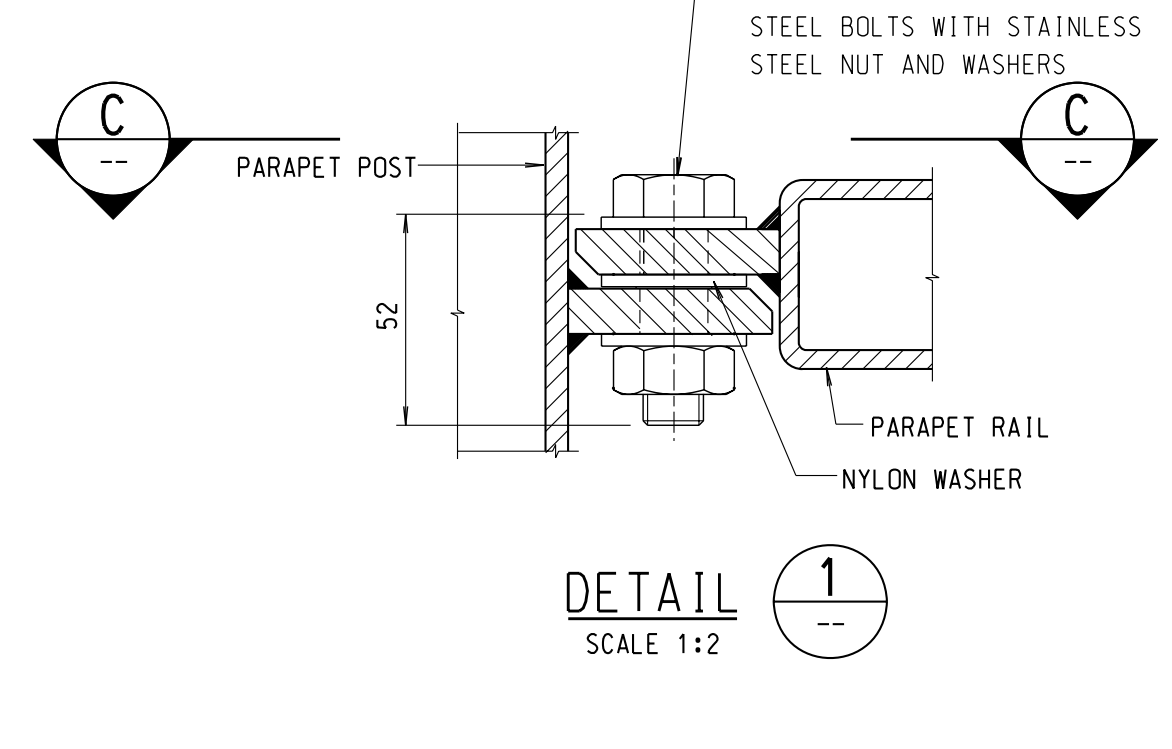
- NOTES:
- DIMENSIONS ARE GIVEN IN MILLIMETRES.
 - ALL STEELWORK SHALL BE HOT ROLLED OR COLD FORMED SECTIONS COMPLYING WITH BS4.
 - ALL STEELWORK SHALL BE GRADE S275J2H OR S275J2 TO BS EN 10210-1 OR BS EN 10219-1 OR EQUIVALENT.
 - ALL STEELWORK SHALL BE HOT DIP GALVANIZED TO BS EN ISO 1461 OR EQUIVALENT.
 - WELDING OF STEEL SHALL BE IN ACCORDANCE WITH BS EN 1011-1 AND BS EN 1011-2 AND ELECTRODES SHALL BE IN ACCORDANCE WITH BS EN 499.
 - WELDING SYMBOLS ARE IN ACCORDANCE WITH BS499.
 - WELDS ARE 6mm CONTINUOUS FILLET WELDS UNLESS OTHERWISE SPECIFIED.
 - STAINLESS STEEL HOLDING DOWN BOLTS AND NUTS SHALL BE GRADE A4-80 TO BS EN ISO 3506-1 AND BS EN ISO 3506-2 WITH COMPATIBLE STAINLESS STEEL WASHERS. GRADE A2-70 MAY BE USED IN NON-MARINE ENVIRONMENT WHERE SPECIFIED IN THE CONTRACT.
 - STAINLESS STEEL BOLTS AND NUTS USED AT THE RAIL BOLTED JOINTS SHALL BE GRADE A2-70 TO BS EN ISO 3506-1 AND BS EN ISO 3506-2 WITH COMPATIBLE STAINLESS STEEL WASHER.
 - A NYLON OR OTHER APPROVED PLASTIC WASHER SHALL BE PROVIDED AT EVERY INTERFACE BETWEEN STAINLESS STEEL AND GALVANIZED STEEL.
 - FASTENERS OTHER THAN STAINLESS STEEL MATERIALS SHALL BE CADMIUM OR ZINC ELECTROPLATED, HOT-DIP GALVANIZED, OR SHERARDISED TO THE APPROPRIATE BRITISH STANDARDS.
 - PARAPET POSTS SHALL BE FIXED VERTICALLY AND BASE PLATES SHALL BE BOLTED DOWN TIGHTLY WITH LEVELS ADJUSTED BY STEEL SHIMS PRIOR TO GROUTING.
 - RAIL EXPANSION JOINTS SHALL BE PROVIDED AT ALL STRUCTURE MOVEMENT JOINTS.
 - PARAPET RAILS SHALL BE CONTINUOUS OVER AT LEAST TWO POSTS. MAXIMUM RAIL LENGTH SHALL BE 12000. MAXIMUM POST SPACING SHALL BE 3000.
 - BEDDING SHALL BE CEMENT / SAND GROUT WITH MIN. COMPRESSIVE STRENGTH OF 40N/mm².



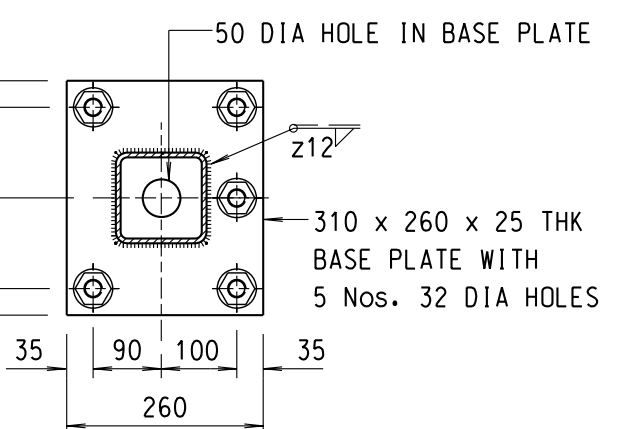
SECTION A
SCALE 1:10



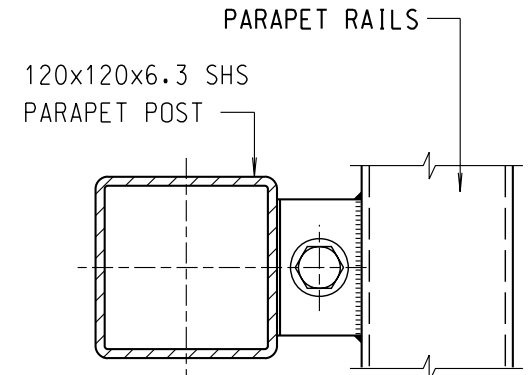
DETAIL 1 FOR SLOPING RAIL
SCALE 1:2
END BAY, TYPICAL BAY, BAY WITH RAIL JOINT TYPE I, II, IIIA & IIIB



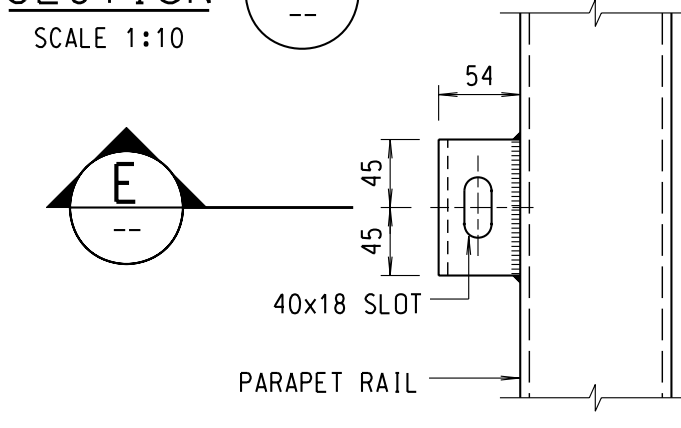
DETAIL 1
SCALE 1:2



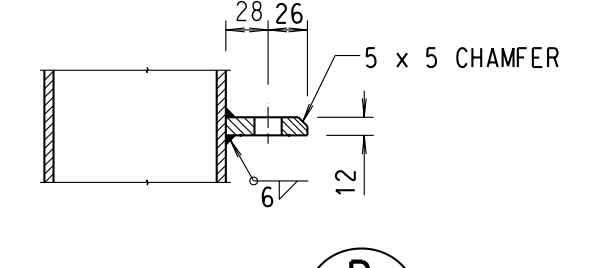
SECTION B
SCALE 1:10



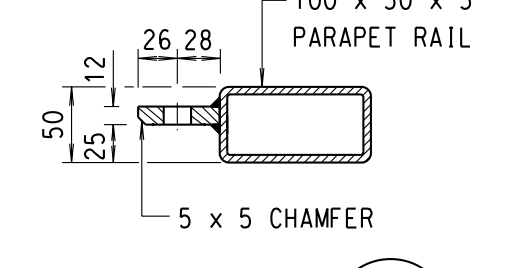
SECTION C
SCALE 1:5



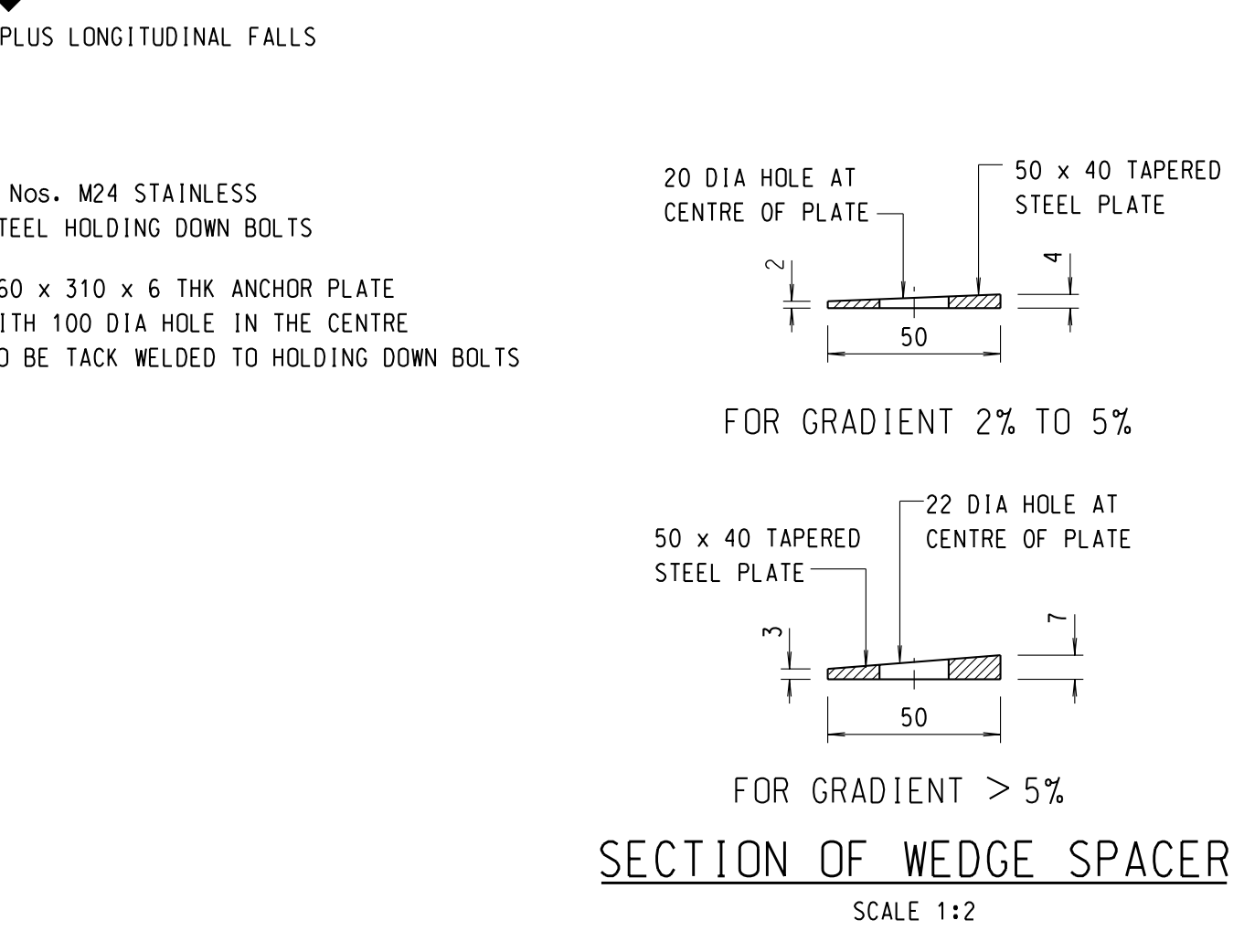
DETAILS OF RAIL IN SECTION C
SCALE 1:5



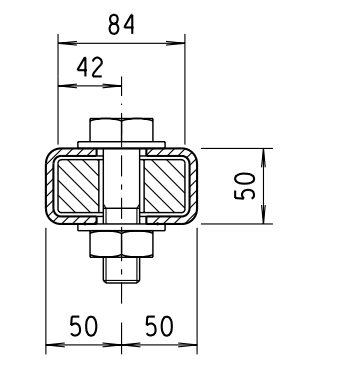
SECTION D
SCALE 1:5



SECTION E
SCALE 1:5

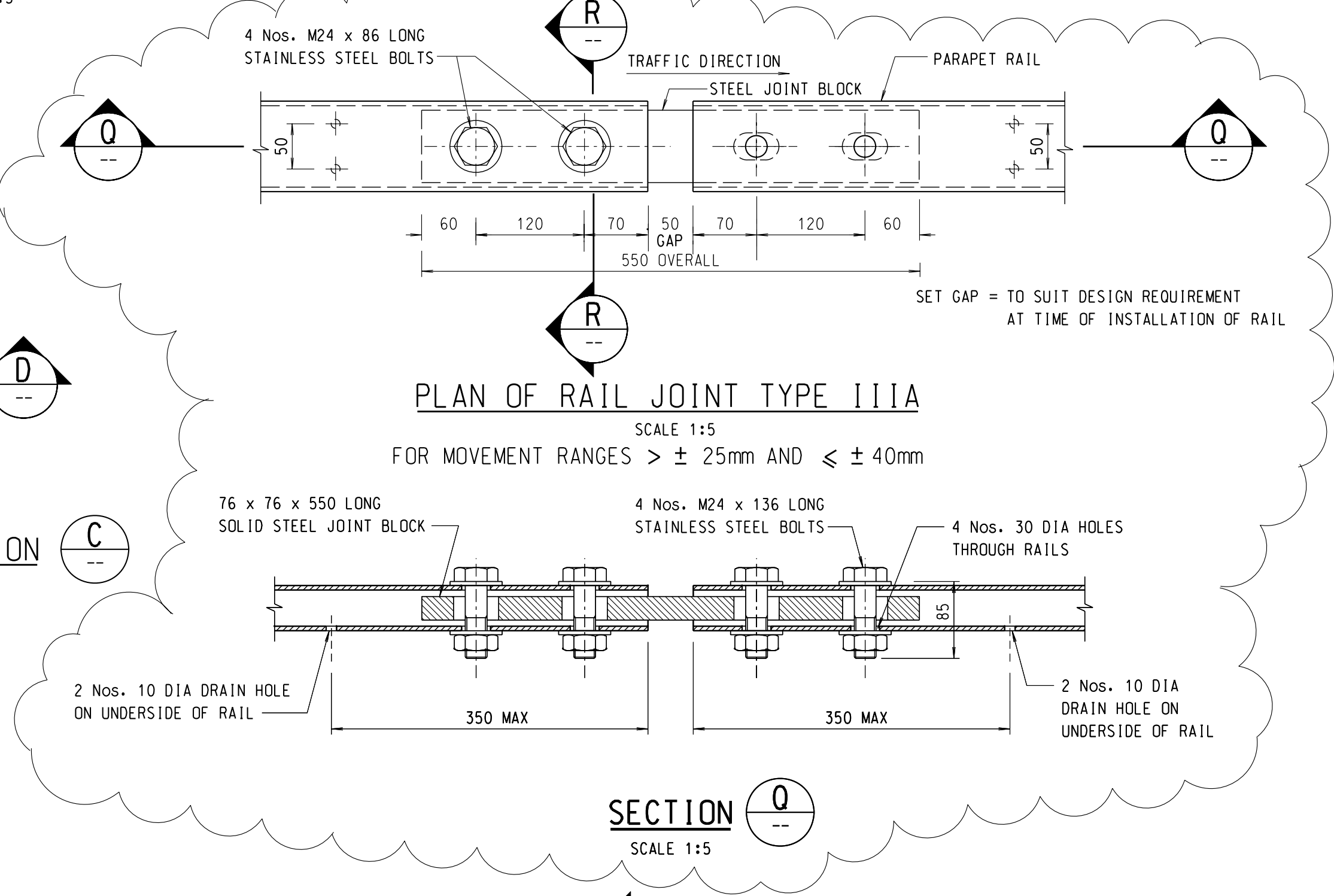


SECTION OF WEDGE SPACER
SCALE 1:2

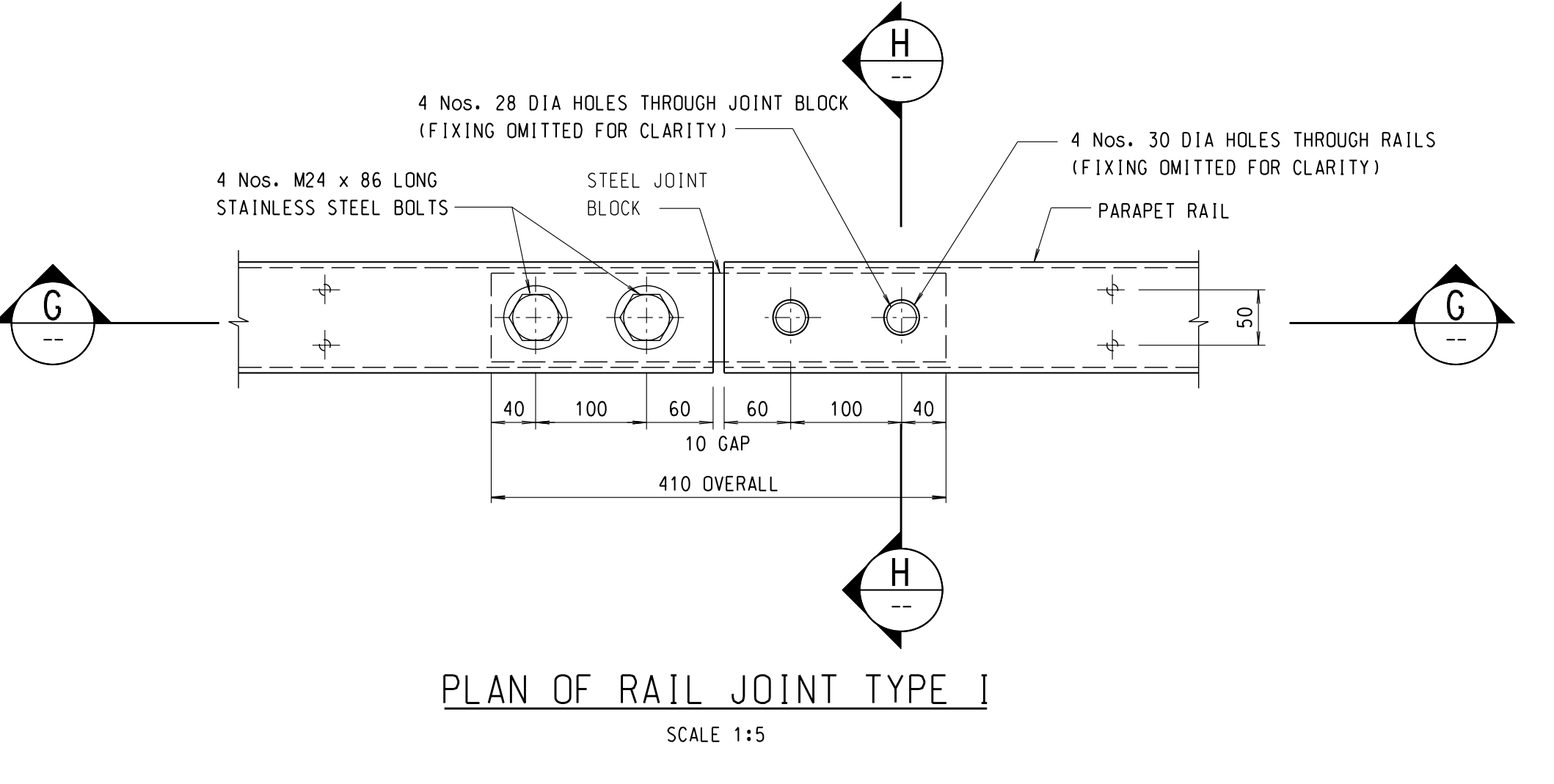


SECTION D
SCALE 1:5

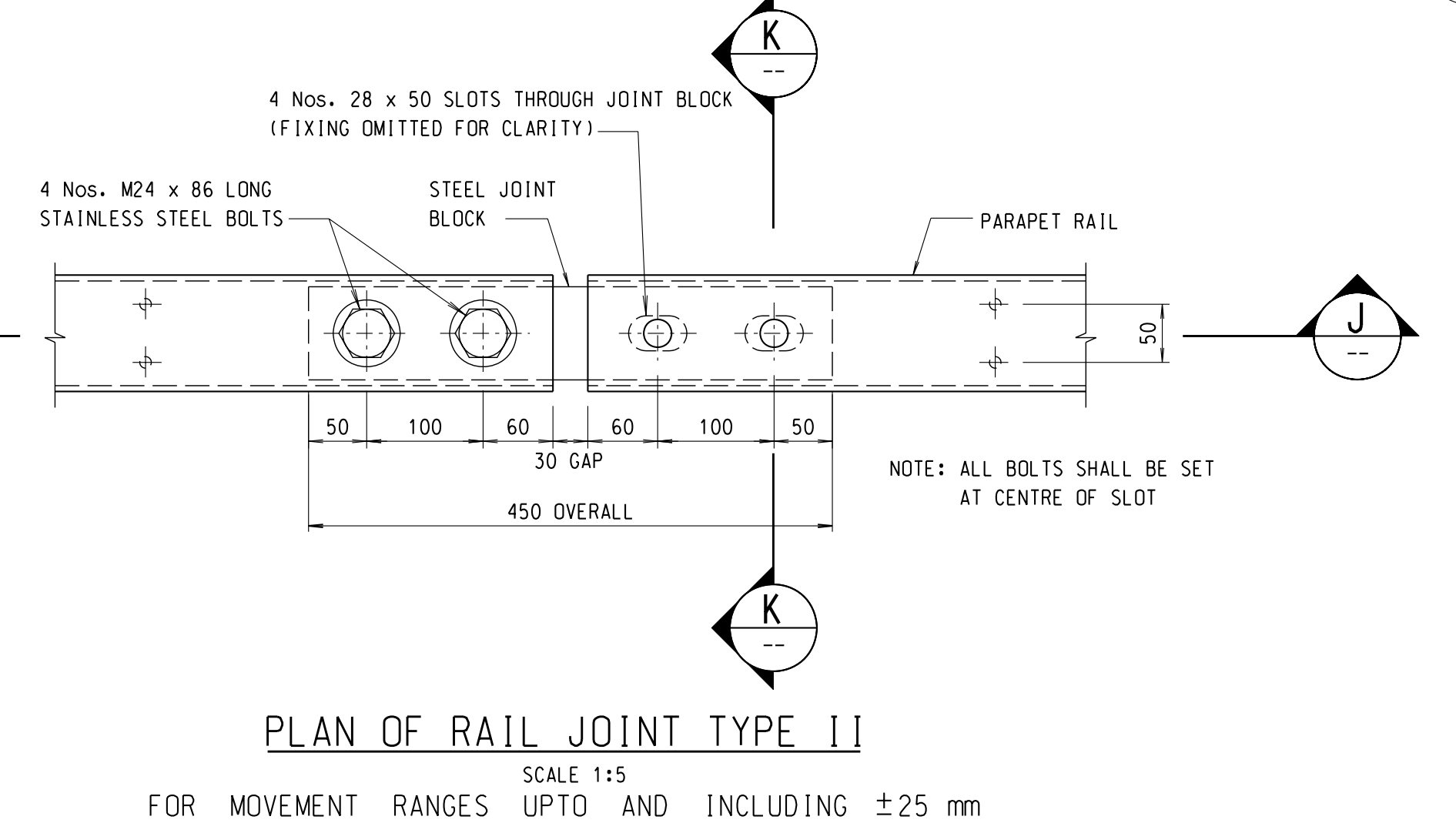
DETAILS OF POST IN SECTION C
SCALE 1:5



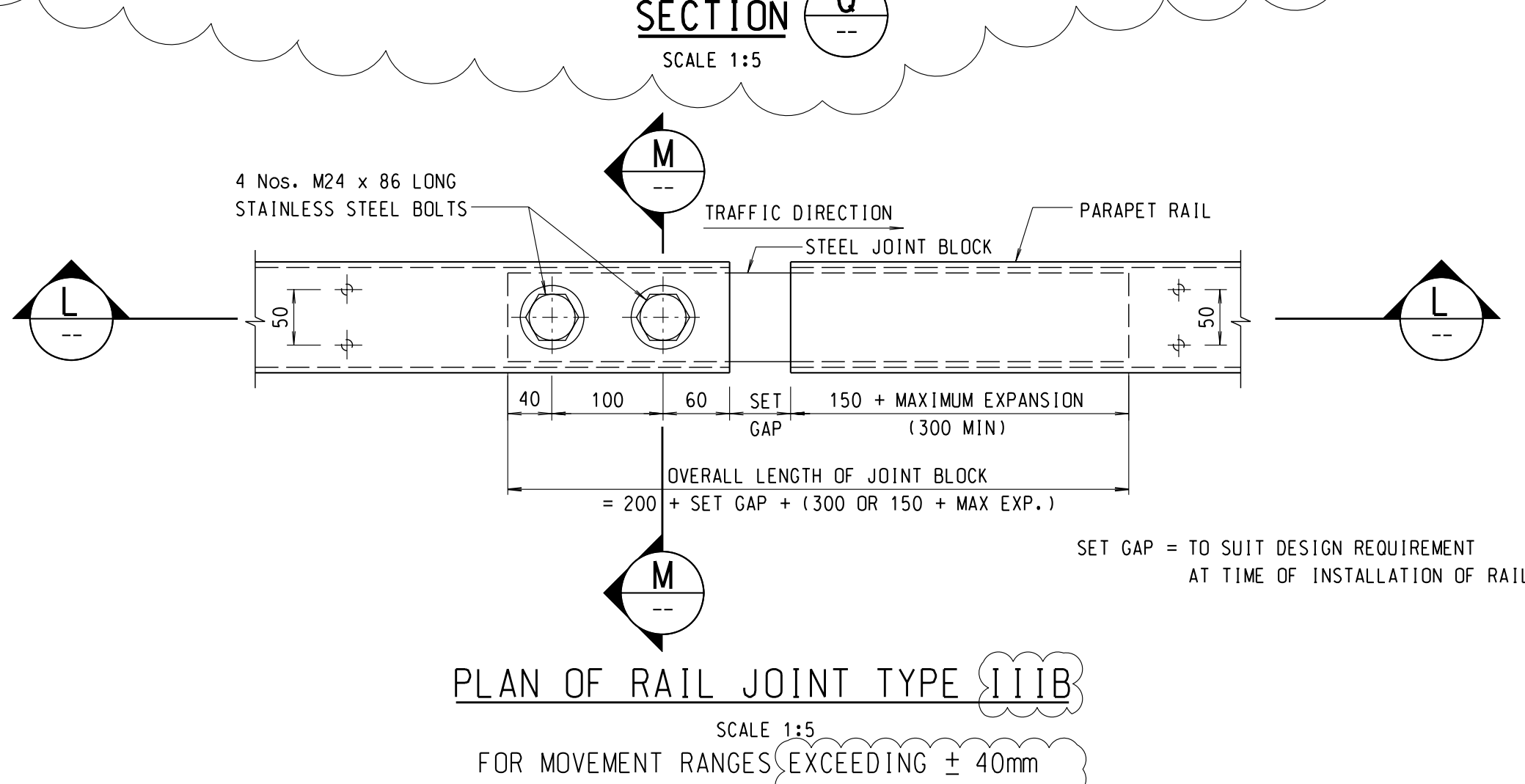
PLAN OF RAIL JOINT TYPE IIIA
SCALE 1:5
FOR MOVEMENT RANGES $> \pm 25$ mm AND $\leq \pm 40$ mm



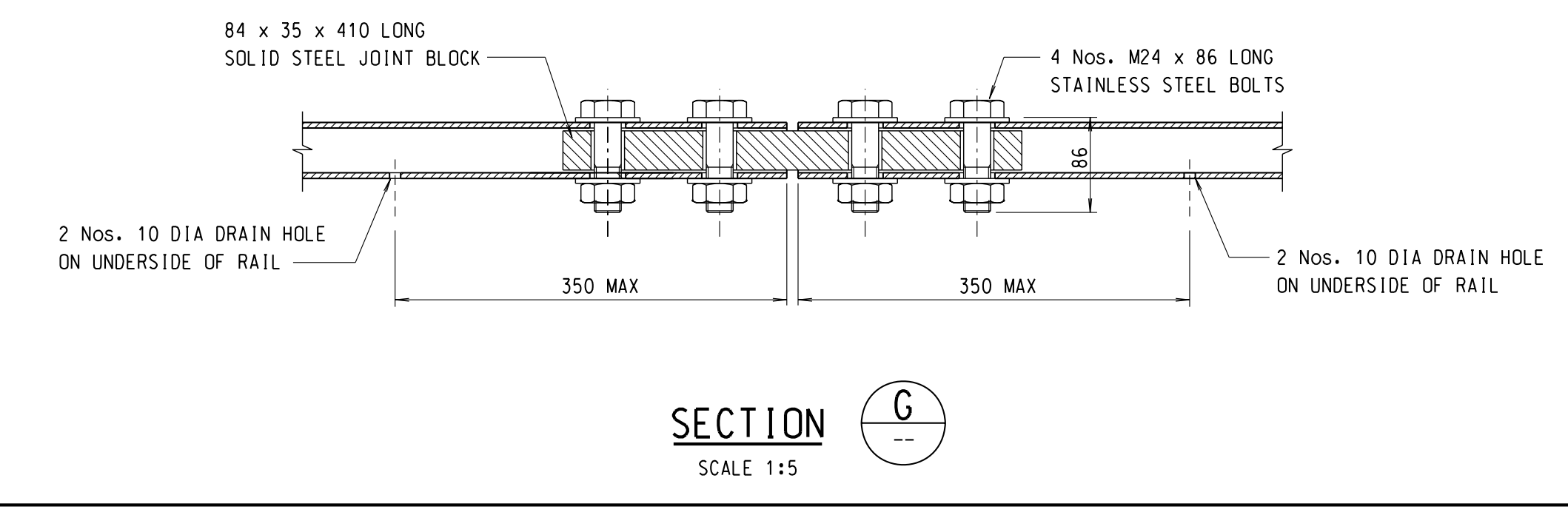
PLAN OF RAIL JOINT TYPE I
SCALE 1:5



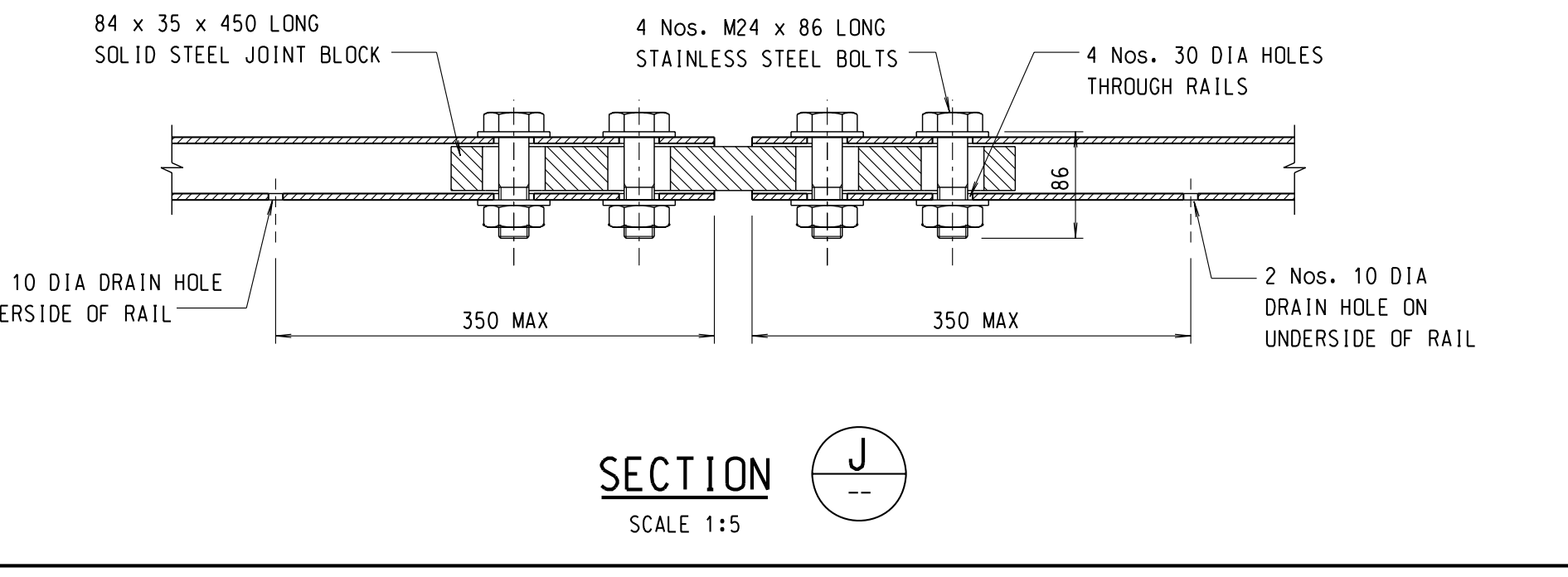
PLAN OF RAIL JOINT TYPE II
SCALE 1:5
FOR MOVEMENT RANGES UPTO AND INCLUDING ± 25 mm



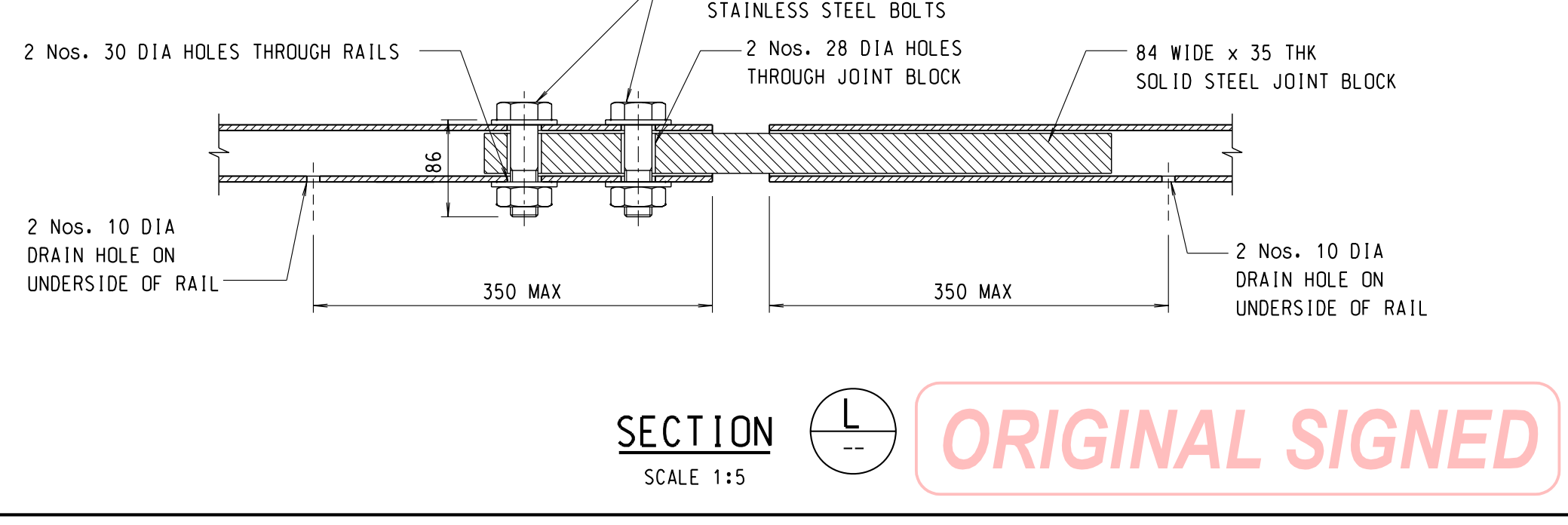
PLAN OF RAIL JOINT TYPE IIIB
SCALE 1:5
FOR MOVEMENT RANGES EXCEEDING ± 40 mm



SECTION C
SCALE 1:5



SECTION J
SCALE 1:5



SECTION L
SCALE 1:5

ORIGINAL SIGNED

no.	date	description	initial
B	08/07	CONNECTION DETAILS WITH W-BEAM DELETED. RAIL JOINT TYPE III CHANGED TO TYPES IIIA & IIIB. EXTRA END POST ADDED.	SIGNED K.W. MO (E/P2-4) SIGNED C.K. CHAN (SE/P2)
A	10/05	1. GENERAL AMENDMENTS 2. SAFETY FENCE CONNECTION REVISED	SIGNED M.H. TAM (E/P2-4) SIGNED C.K. CHAN (SE/P2)

REVISION			
designed	name	signature	date
M.H. TAM	M.H. TAM	SIGNED	AUG 01
drawn	T.M. LEE	SIGNED	AUG 01
senior technical officer	K.K. LUK	SIGNED	AUG 01
project engineer	M.H. TAM	SIGNED	JAN 02
senior engineer	W.C. CHAN	SIGNED	FEB 02
approved	SIGNED P. C. WONG Chief Highway Engineer		FEB 02

contract no.	
file no.	
project no.	
contract	

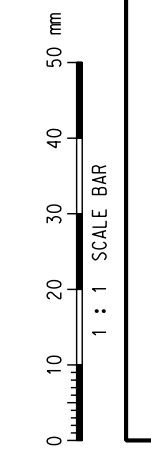
drawing title

STEEL VEHICLE PARAPET

drawing no. **SSD141-B** scale **AS SHOWN**

office **BRIDGES AND STRUCTURES DIVISION** 結構橋樑部

HIGHWAYS DEPARTMENT 路政署
HONG KONG 香港



1:1 SCALE BAR