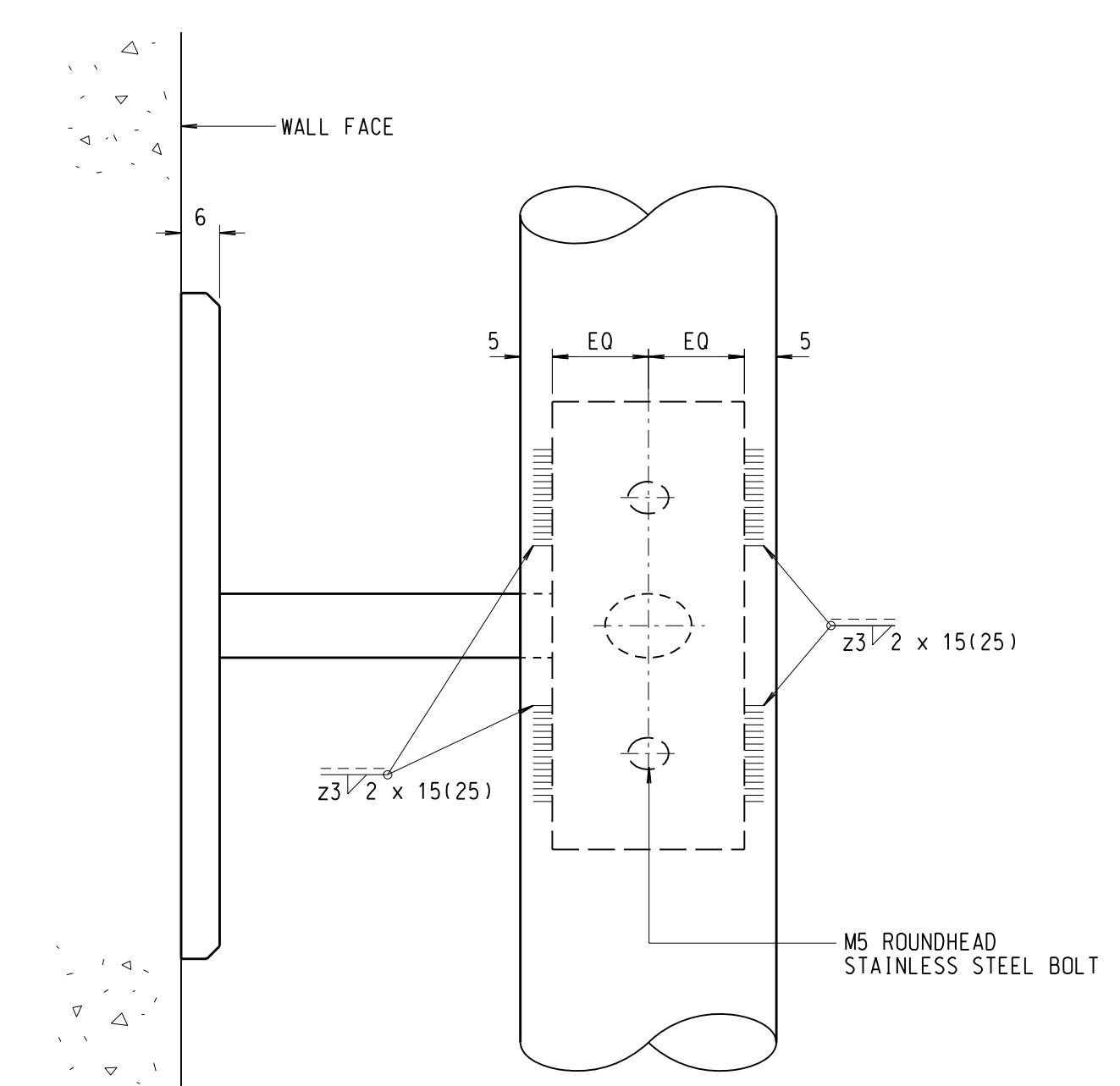
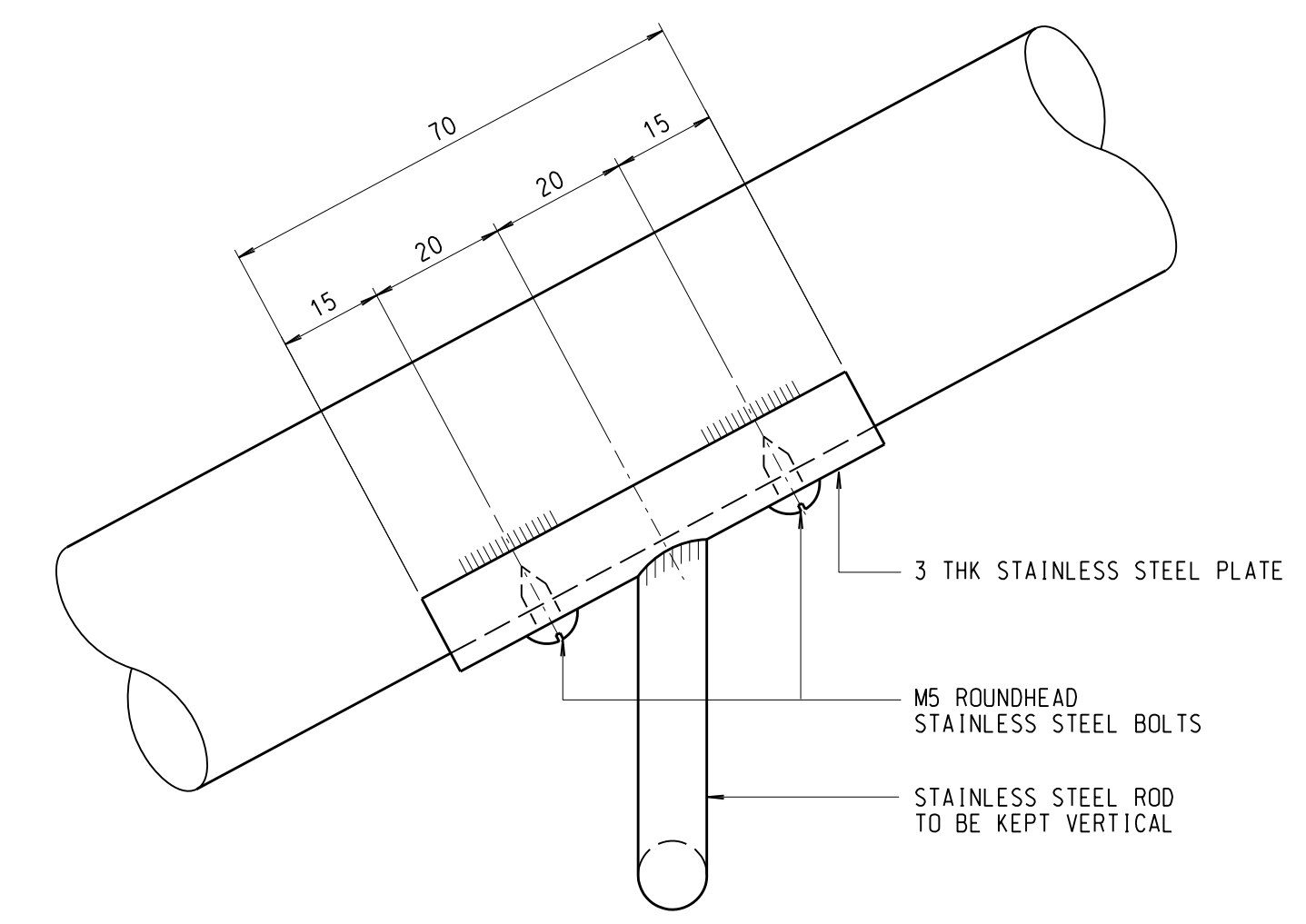


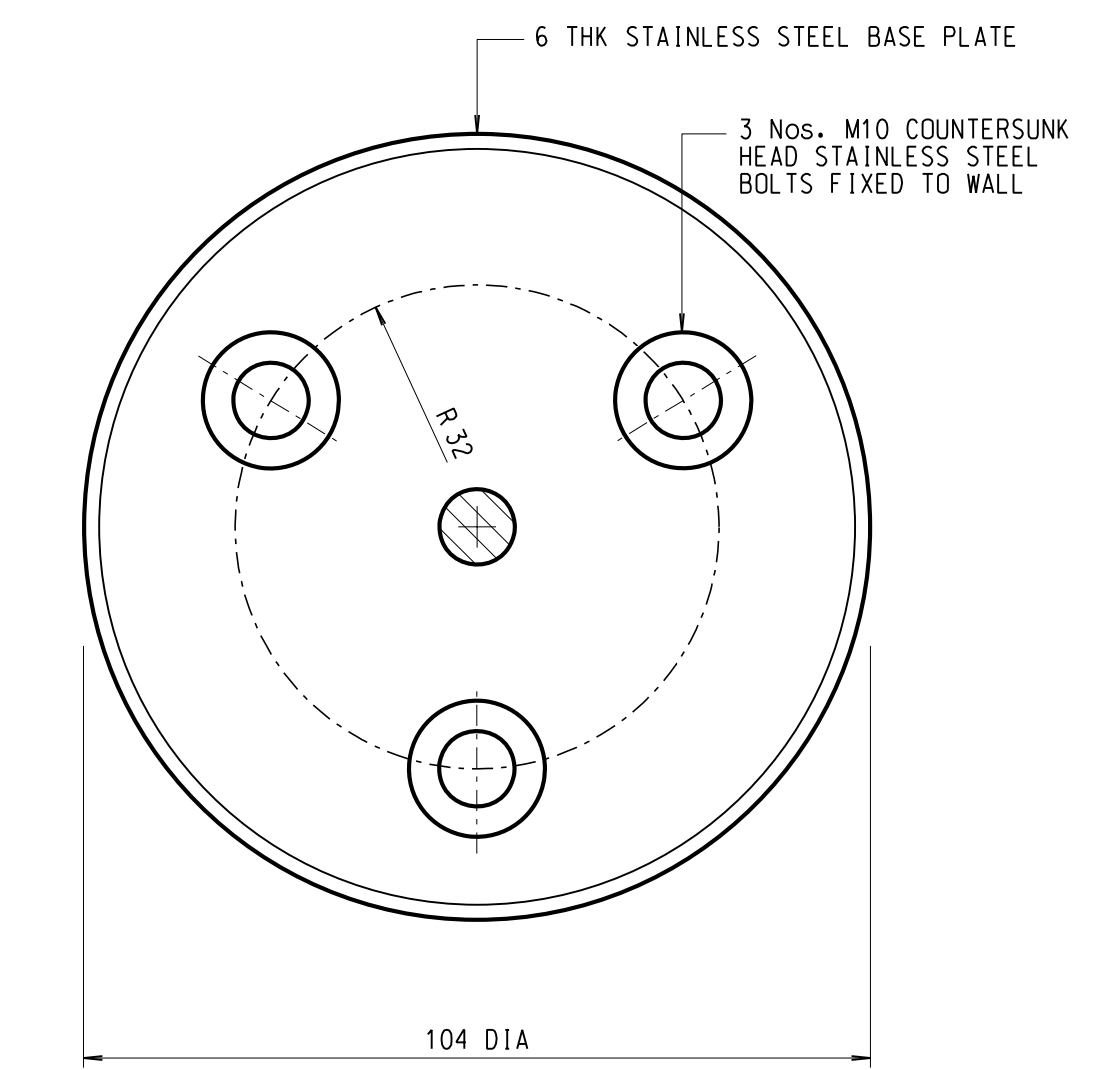
TYPICAL SECTION OF HANDRAIL TO WALL STRUCTURE
SCALE 1:1



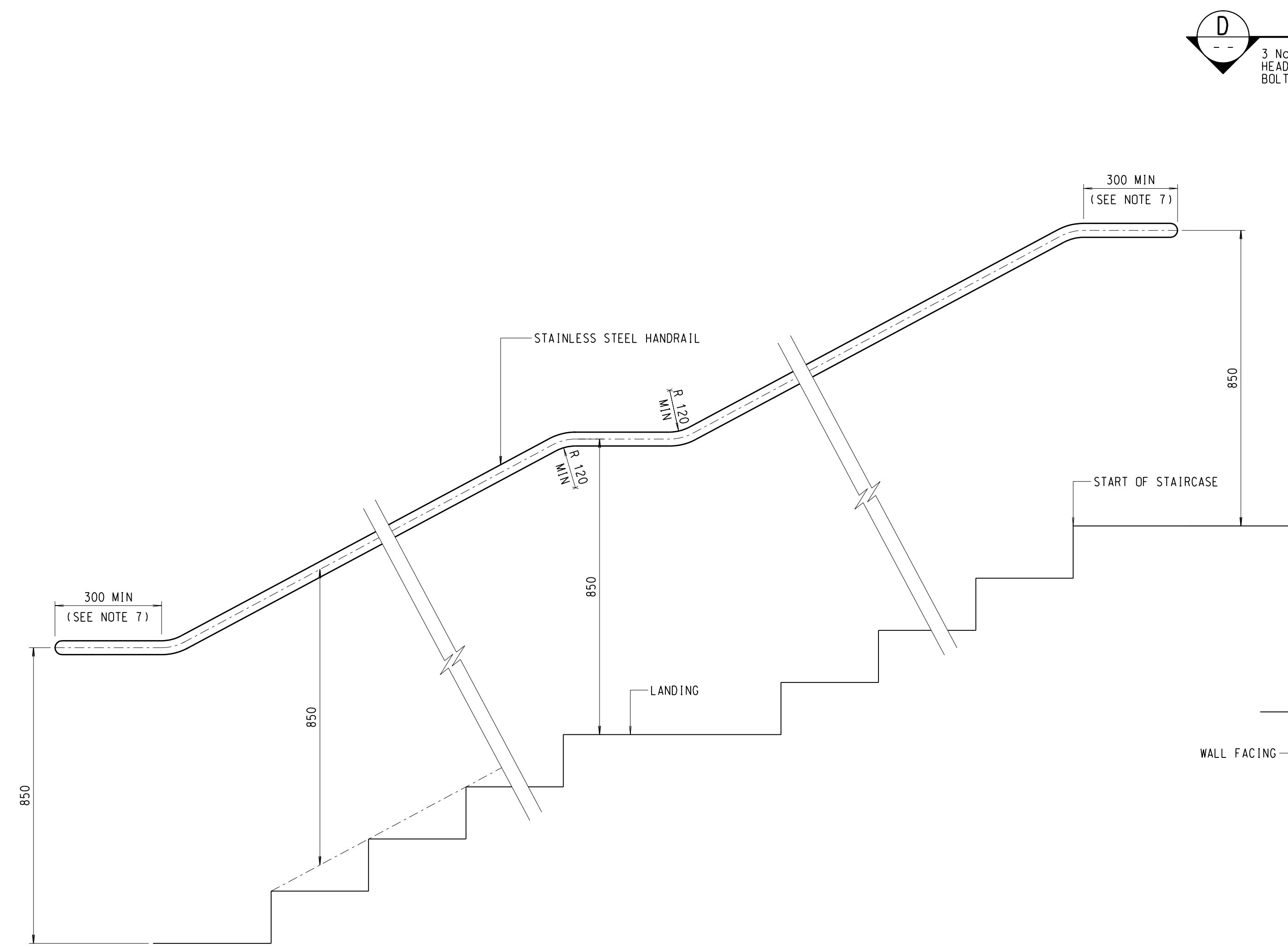
PLAN A
SCALE 1:1



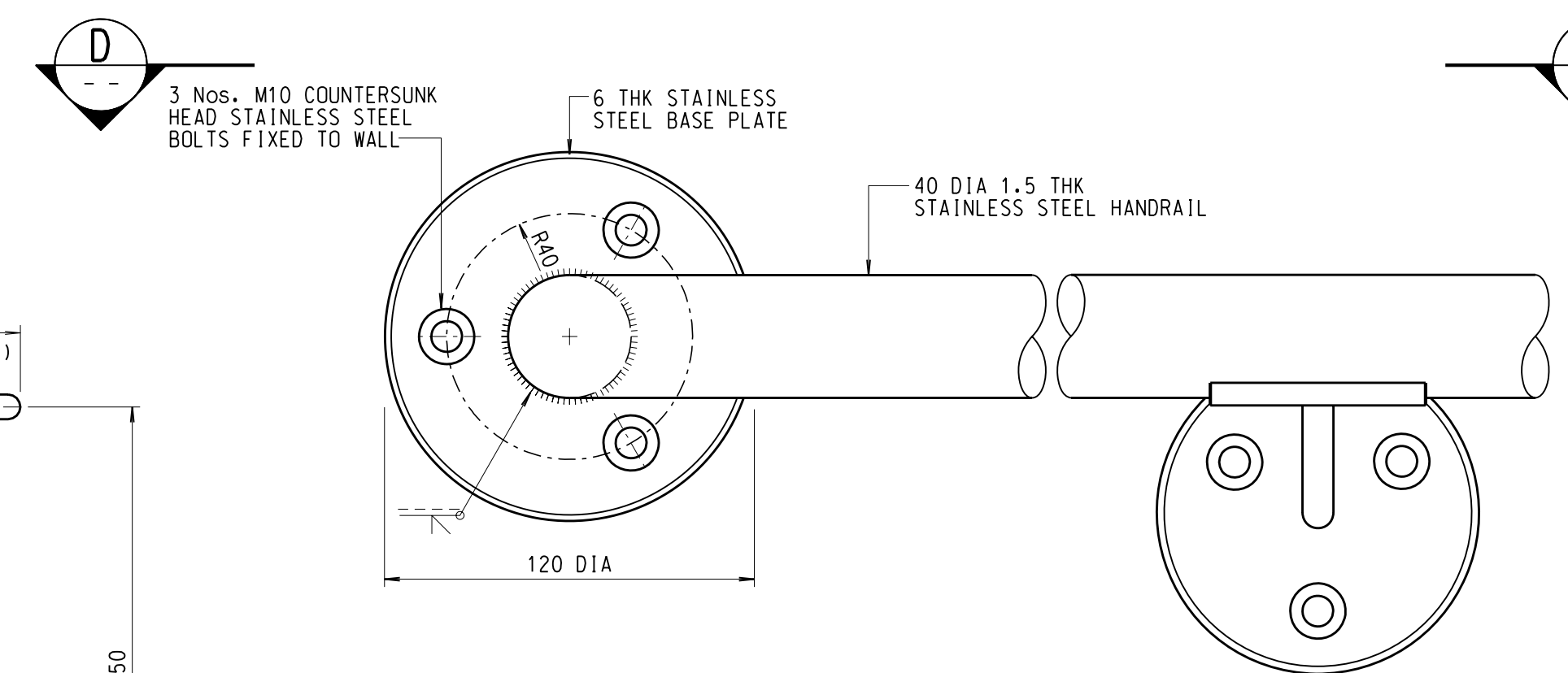
SECTION B
SCALE 1:1



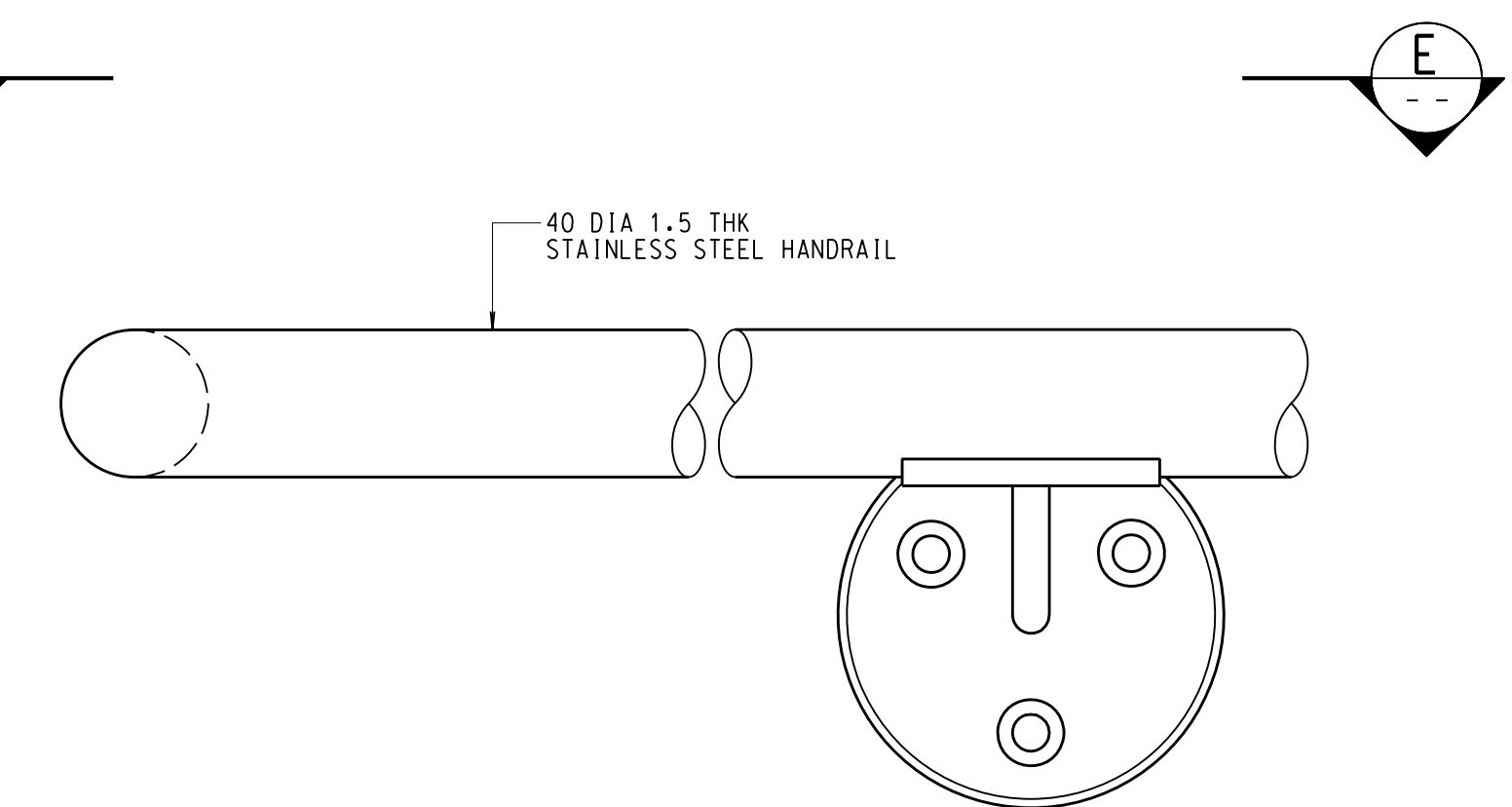
ELEVATION C
SCALE 1:1



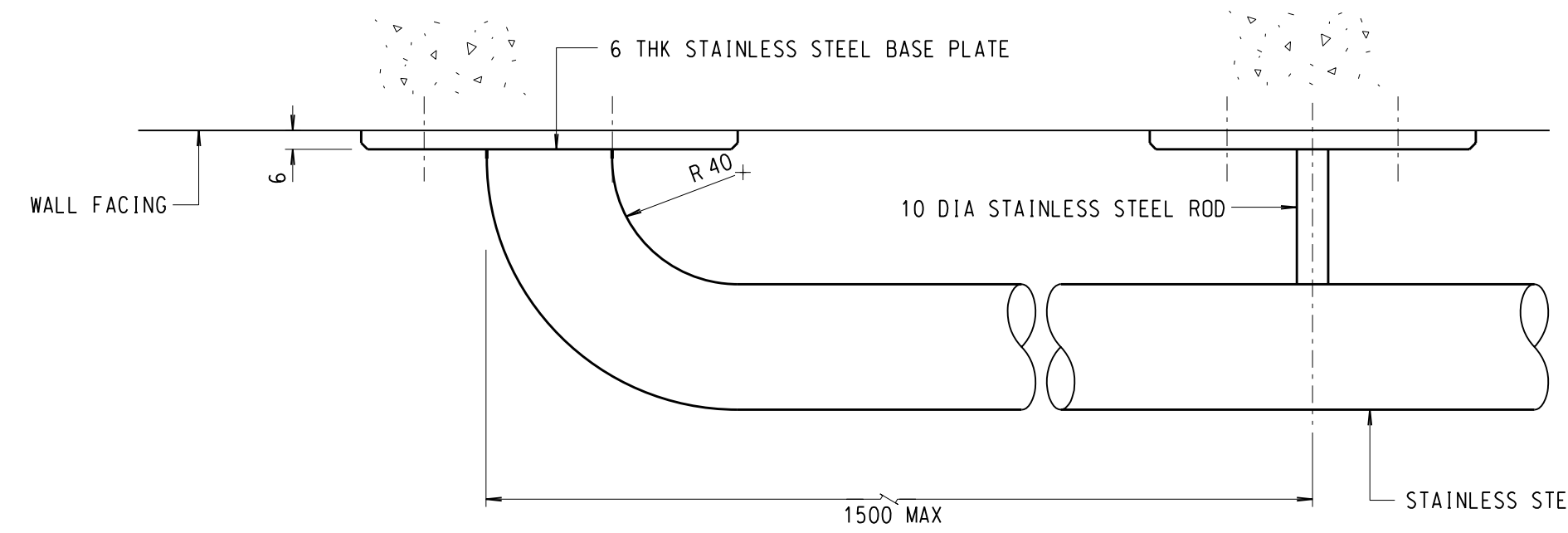
ELEVATION AT STAIRCASE
SCALE 1:10



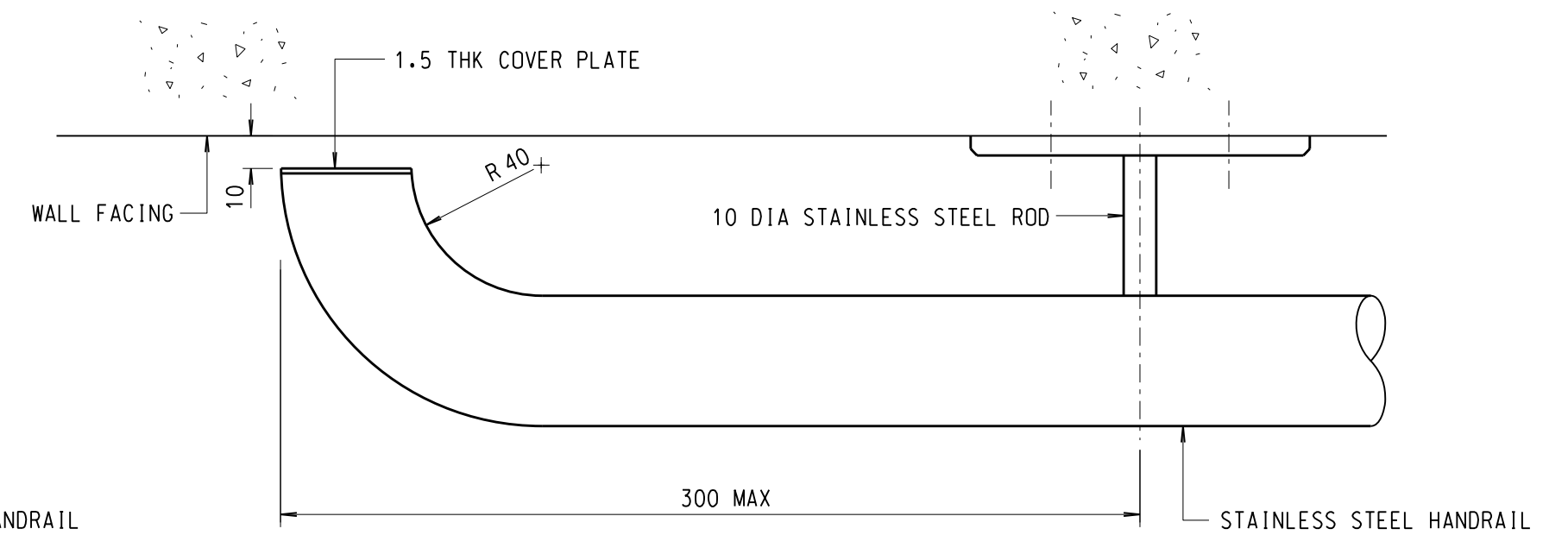
ELEVATION AT HANDRAIL END
SCALE 1:2
(FOR LOCATION PRONE TO VEHICULAR COLLISION)



ELEVATION AT HANDRAIL END
SCALE 1:2
(FOR LOCATION NOT PRONE TO VEHICULAR COLLISION)



PLAN D
SCALE 1:2



PLAN E
SCALE 1:2

- NOTES:
- ALL DIMENSIONS ARE IN MILLIMETRES.
 - SEATING BRACKETS TO BE INSTALLED AT APPROXIMATELY 1500 C/C.
 - ALL JOINTS WELDED AND GROUND SMOOTH.
 - ALL STAINLESS BOLTS AND NUTS TO BE GRADE A4-70.
 - ALL STAINLESS STEEL PLATE AND SECTION TO BE GRADE 316 S33.
 - SUBJECT TO THE AGREEMENT OF THE ENGINEER, AN ALTERNATIVE HANDRAIL DIAMETER OF 32mm TO 40mm MAY BE ADOPTED.
 - THE END PORTION MAY BE BENT DOWNWARDS OR AROUND A STRUCTURE TO SUIT SITE CONDITIONS AS DIRECTED BY THE ENGINEER.

no.	date	description	initial
B	09/09	END DETAILS REVISED	SIGNED K.S. LAM, E/P2-2
			SIGNED P.T. LEUNG, SE/P2
A	08/07	GENERAL DETAILS ADDED - DRAWING REDRAWN	SIGNED S.W. NG, E/P2-2
			SIGNED C.K. CHAN, SE/P2

REVISION			
no.	date	description	initial
designed	E/MK 89		SIGNED 02/89
drawn	T. W. LAM		SIGNED 10/05
senior technical officer	S. F. CHAN		SIGNED 10/05
project engineer	M. H. TAM		SIGNED 10/05
senior engineer	C. K. CHAN		SIGNED 10/05
approved		SIGNED P. K. LEE Chief Highway Engineer	18/10/05 date

contract no.
file no.
project no.
contract

drawing title
ADDITIONAL HANDRAIL TO WALL STRUCTURE FOR STAIRCASE & RAMP OF FOOTBRIDGE / SUBWAY

drawing no. **SSD101-B** scale **AS SHOWN**

office **BRIDGES AND STRUCTURES DIVISION** 結構橋樑及
HIGHWAYS DEPARTMENT 路政署
HONG KONG 香港