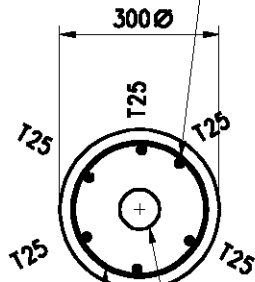


Position of this bar adjust to suit 75 Dia. PVC drain pipe



T8 links
75 Dia. PVC drain pipe

SECTION C - C

6T25

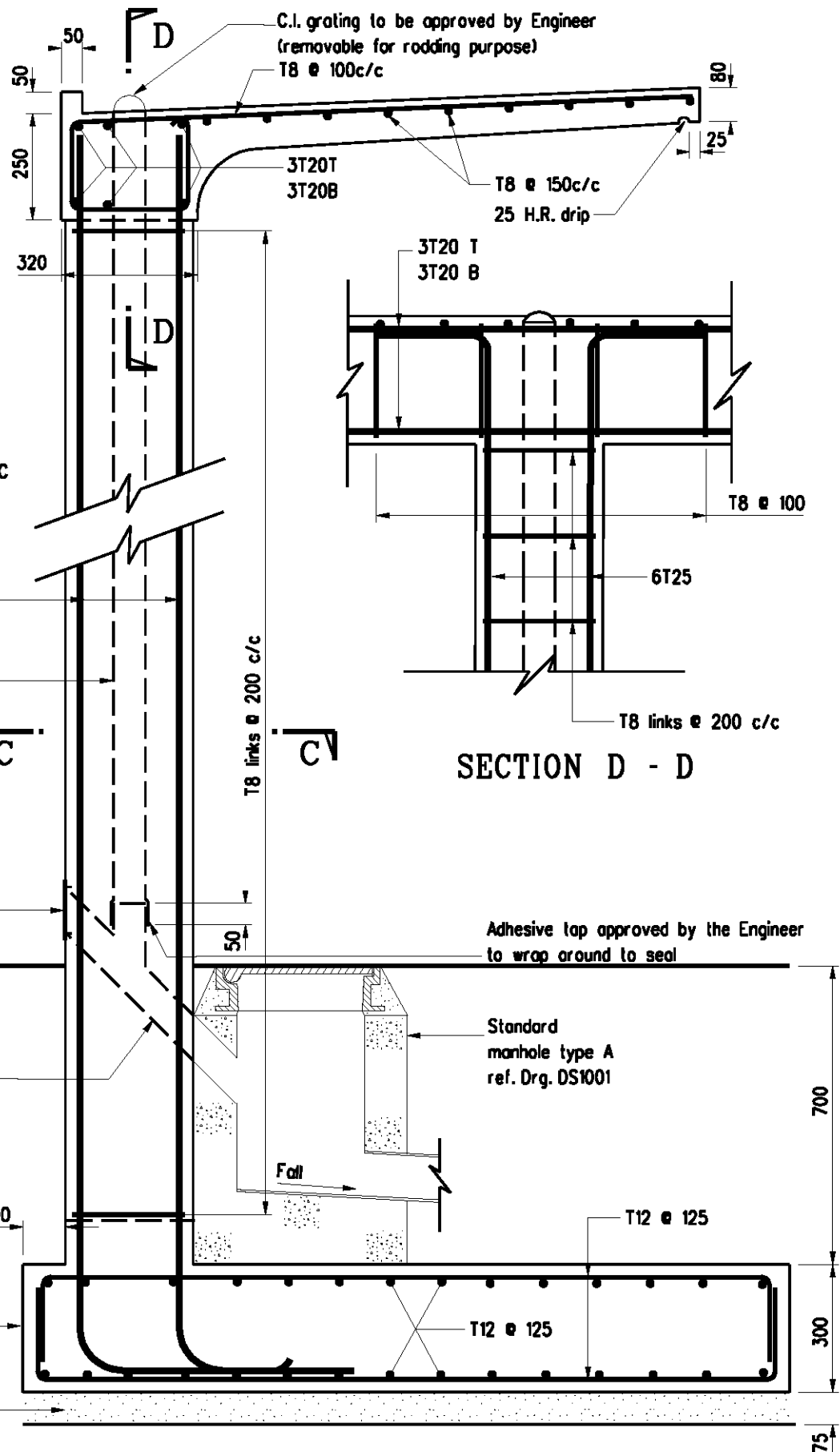
75 Dia. PVC drain pipe in column

180x140x5 thick stainless steel rodding eye cover plate fixed by 8 Nos. 6 Dia. screws see detail in Drg. No. H4115

75 Dia. 2mm thick stainless steel tube cut and welded to shape

1800 X 1800 square foundation

Blinding layer



C.I. grating to be approved by Engineer (removable for rodding purpose)
T8 @ 100c/c

3T20T
3T20B

T8 @ 150c/c
25 H.R. drip

3T20 T
3T20 B

T8 @ 100

T8 links @ 200 c/c

SECTION D - D

Adhesive lap approved by the Engineer to wrap around to seal

Standard manhole type A ref. Drg. DS1001

Fall

T12 @ 125

T12 @ 125

| | | | |
|---|----------|-----------|------|
| Former Drg. No. H2039/3 with general revision | | June 94 | |
| REF. | REVISION | SIGNATURE | DATE |

BUS SHELTER - TYPE 'B'

HIGHWAYS DEPARTMENT

| | | |
|-----------|-------------|-----|
| REFERENCE | DRAWING No. | CAD |
| SCALE | H 4111 | |
| 1:15 | | |