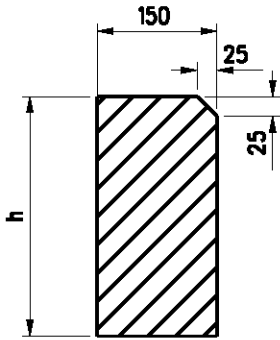
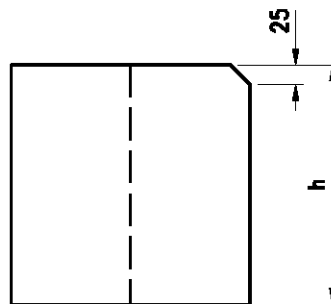
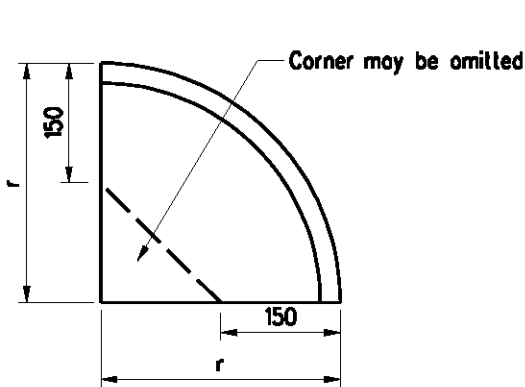


# 1. STRAIGHT KERBS



Dimension h = 150 ~ 300 as required

# 2. QUADRANT KERBS



h = 150 ~ 300 as required

r = 200 ~ 300 as required

PLAN VIEW

END VIEW

**Notes:**

1. The length of a straight kerb unit shall be at least 600 mm.
2. Kerbs shall be chisel-dressed to a depth of at least 140mm on the front face, at least 75mm on the back face and for the fullwidth of the top face.
3. All dimensions are in millimetres.

	Former Drg. No. H4001 with general revision		June 94
REF.	REVISION	SIGNATURE	DATE

GRANITE KERBS

HIGHWAYS DEPARTMENT

REFERENCE

DRAWING No.

CAD

SCALE

1 : 10

H 4101