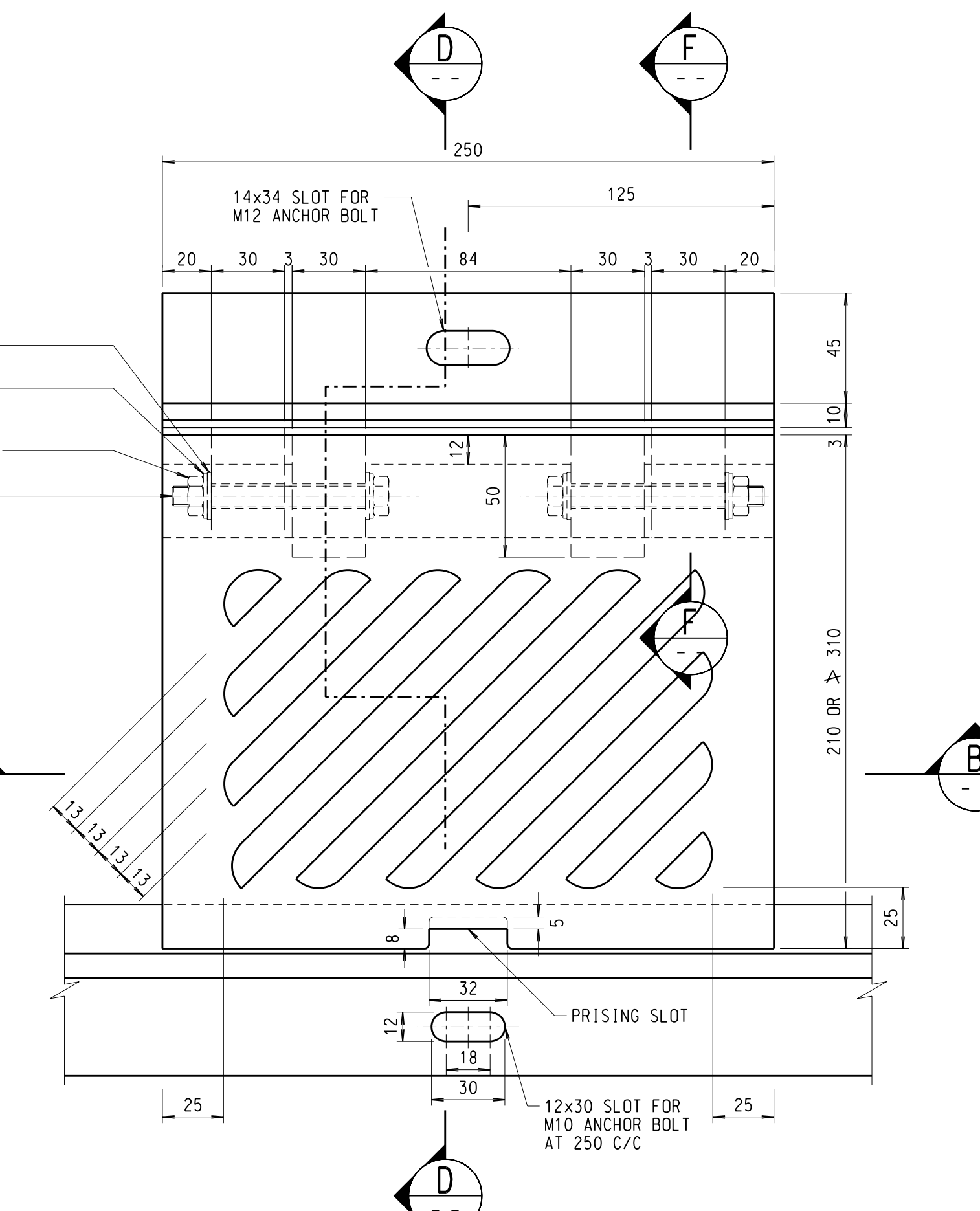


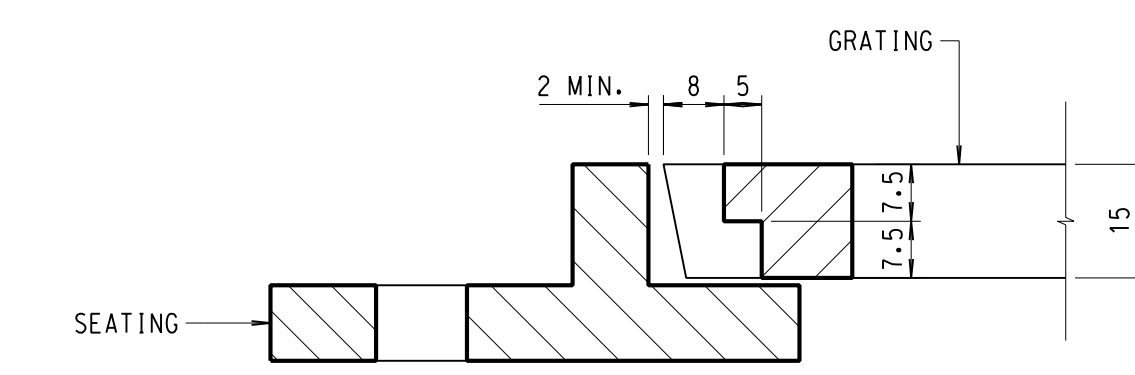
**PLAN OF GRATING**

SCALE 1:2  
(EXACT NO. OF SLOTS AND RIBS TO BE ADJUSTED TO SUIT CHANNEL WIDTH)



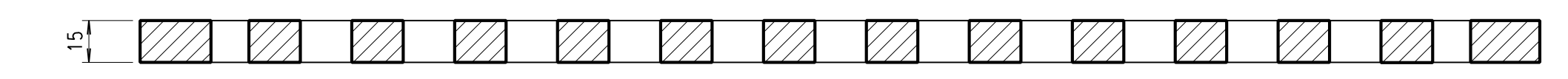
**PLAN OF GRATING - HALF COVER**

SCALE 1:2  
(EXACT NO. OF SLOTS AND RIBS TO BE ADJUSTED TO SUIT CHANNEL WIDTH)



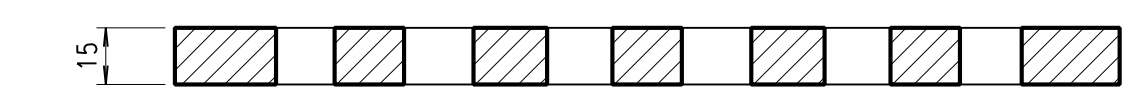
**DETAIL OF PRISING SLOT**

SCALE 1:1



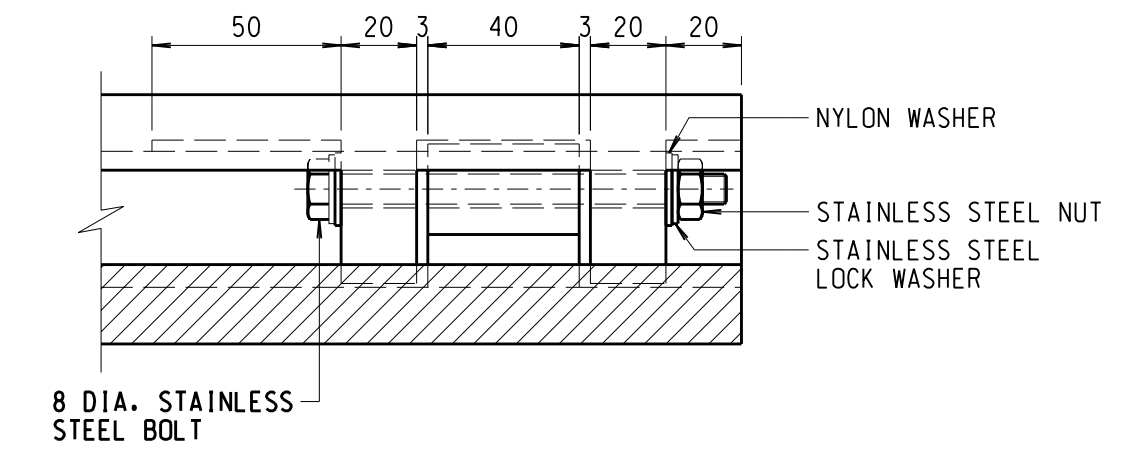
**SECTION A**

SCALE 1:2



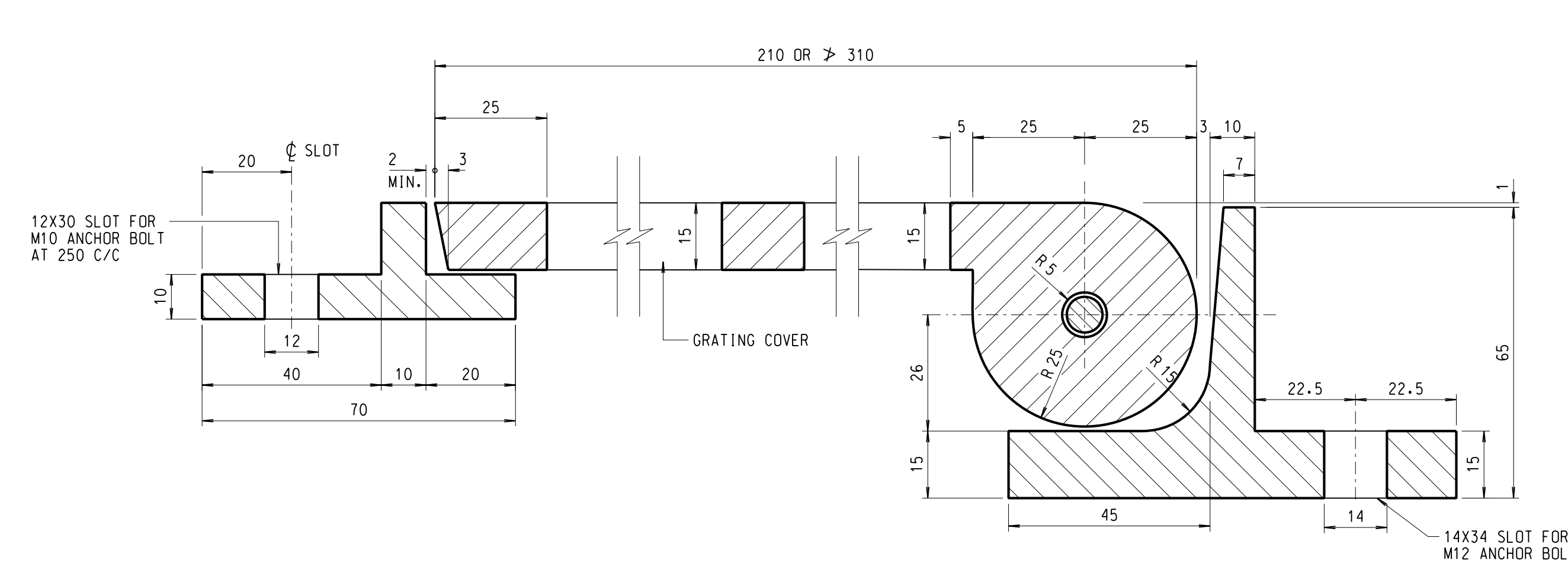
**SECTION B**

SCALE 1:2



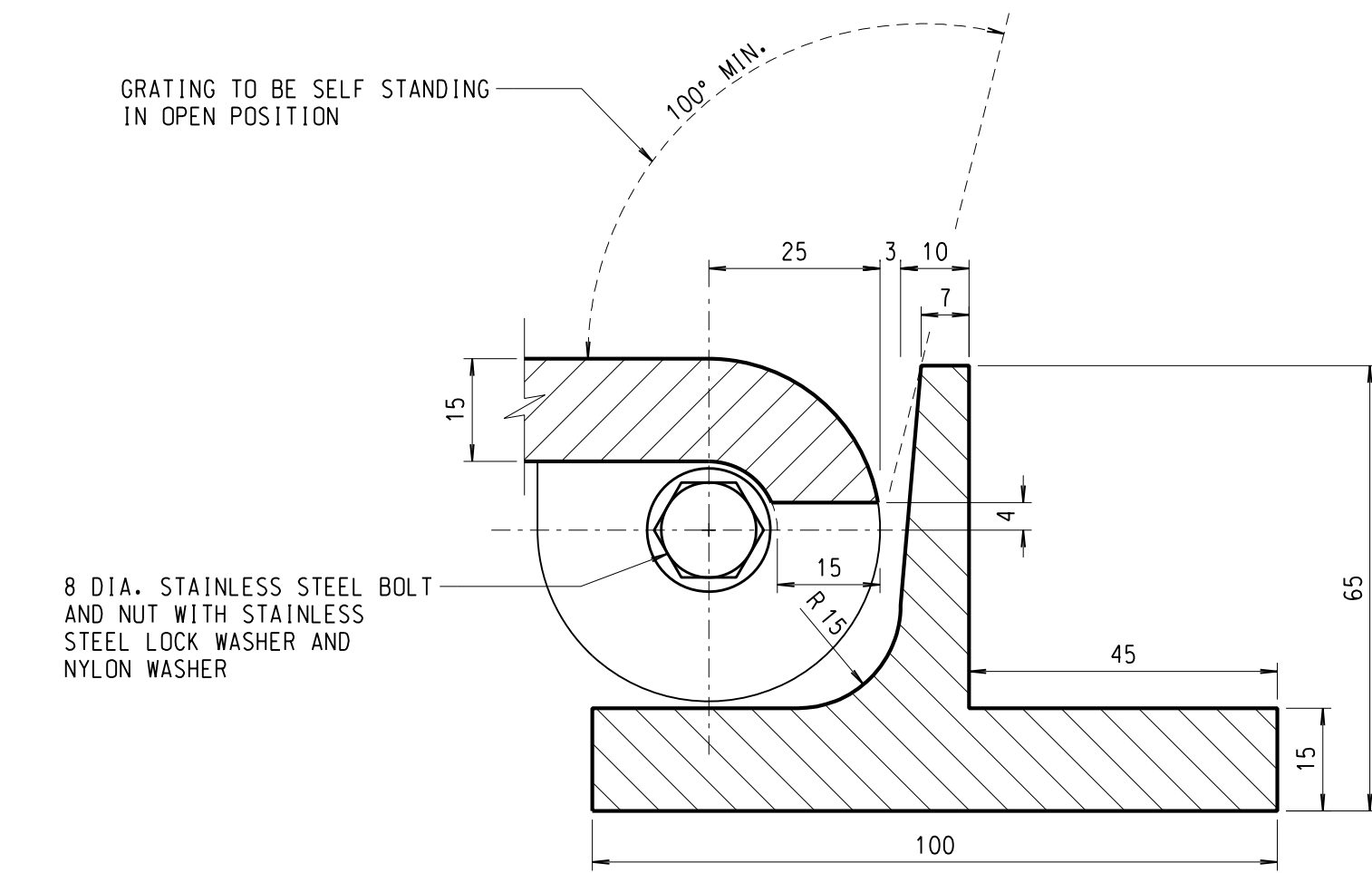
**SECTION C**

SCALE 1:2



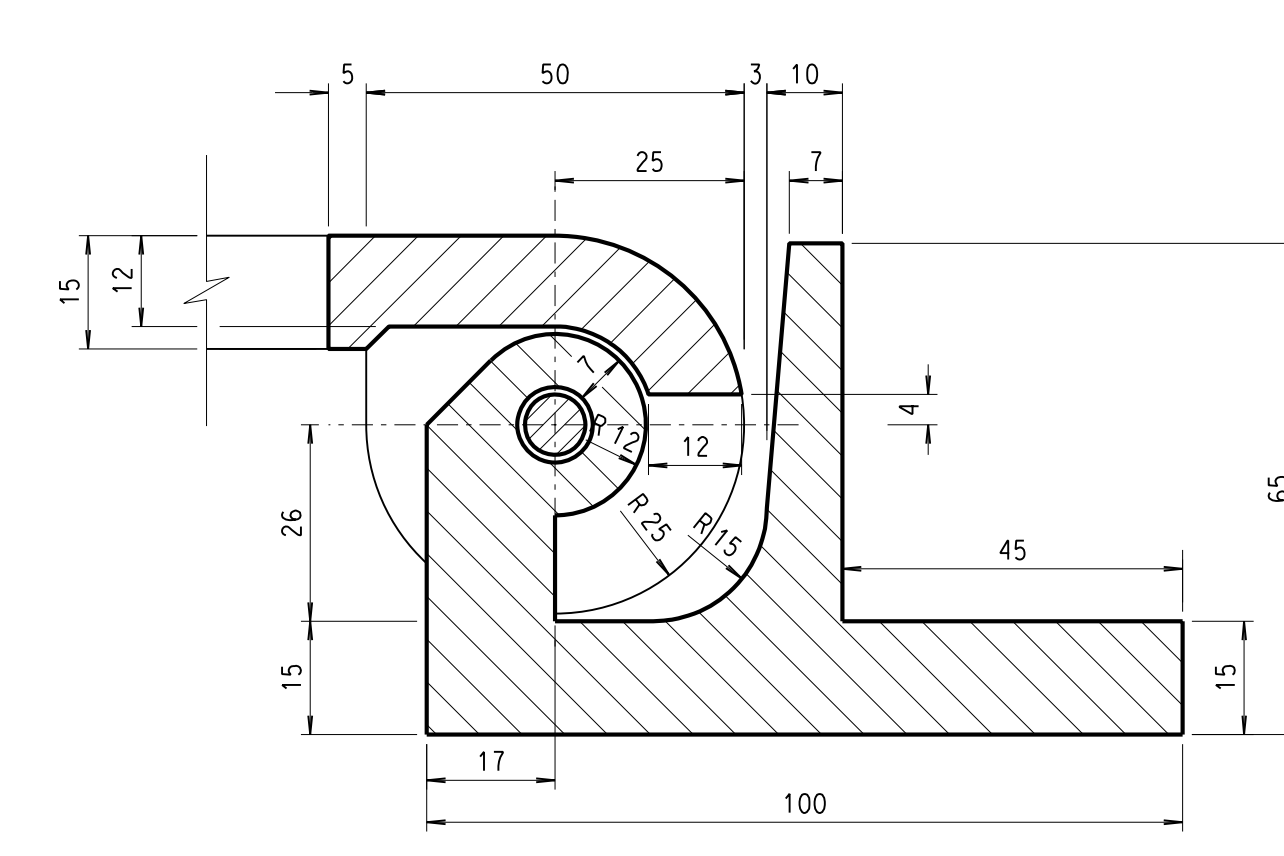
**SECTION D**

SCALE 1:1



**SECTION E**

SCALE 1:1



**SECTION F**

SCALE 1:1

- NOTES:
- ALL DIMENSIONS ARE IN MILLIMETRES UNLESS OTHERWISE SPECIFIED.
  - ALL GRATING CORNERS SHALL BE ROUNDED TO APPROXIMATELY 2.
  - GRATINGS AND FRAMES SHALL BE CAST IRON CONFORMING TO GRADE 150 OF B.S.1452.
  - GRATINGS AND FRAMES ARE DESIGNED FOR USE WITH 150 TO 250 HALF-ROUND OR 'U' CHANNELS.
  - ALL CAST IRON UNITS SHALL BE COATED WITH A BITUMEN COATING.
  - GAPS BETWEEN GRATING UNITS SHALL NOT EXCEED 3. THE OVERALL LENGTH OF CHANNEL GRATING SHALL MAKE DUE ALLOWANCE FOR GAPS BETWEEN UNITS.
  - GRATINGS WITH OBLIQUE BARS PATTERN SHALL NOT BE SUBJECT TO VEHICULAR LOAD.
  - GRATINGS TO BE USED ON CYCLE TRACKS SHALL REFER TO HIGHWAYS DEPARTMENT STRUCTURES STANDARD DRAWING NO. SSD 166.

**ABBREVIATIONS:**

- C/C CENTRE TO CENTRE  
DIA. DIAMETER  
EQ. EQUAL  
MIN. MINIMUM  
NO. NUMBER  
R RADIUS  
≥ NOT EXCEEDING

| no. | date  | description   | initial                                       |
|-----|-------|---|---|
| E   | 09/09 | DRAWING RE-DRAWN WITH GRATING SLOTS AND DRAWING TITLE REVISED | SIGNED<br>K.S.LAM, E/P2-2<br>P.T.LEUNG, SE/P2 |
| D   | 02/91 | STAINLESS BOLT AND HALF COVER REVISED                         | SIGNED<br>H.Y.HO                              |
| C   | 05/88 | GENERAL REVISION  | SIGNED<br>H.Y.HO                              |
| B   | 02/88 | DIRECTION OF THE FLOW AND NOTE 6 ADDED                        | SIGNED<br>H.Y.HO                              |
| A   | 01/88 | SEATING STEM REVISED AND PRISING SLOT DETAIL ADDED            | SIGNED<br>H.Y.HO                              |

| REVISION                 |         |           |       |
|--------------------------|---------|-----------|-------|
| no.                      | name    | signature | date  |
| designed                 | H.Y. HO | SIGNED    | 10/87 |
| drawn                    | P.Y. MA | SIGNED    | 10/87 |
| senior technical officer | H.Y. HO | SIGNED    | 10/87 |
| project engineer         | E.      | SIGNED    | 05/88 |
| senior engineer          | S. E.   | SIGNED    | 05/88 |

approved  
SIGNED  
J. A. KESSLER  
Chief Highway Engineer  
date

contract no.  
file no.  
project no.  
contract

drawing title  
**HINGED CHANNEL GRATING FOR FOOTWAY ON STRUCTURES**

drawing no. **SSD 94-E** scale **AS SHOWN**

office **BRIDGES AND STRUCTURES DIVISION** 結構樑部及  
**HONG KONG DEPARTMENT OF HIGHWAYS** 香港路政署

