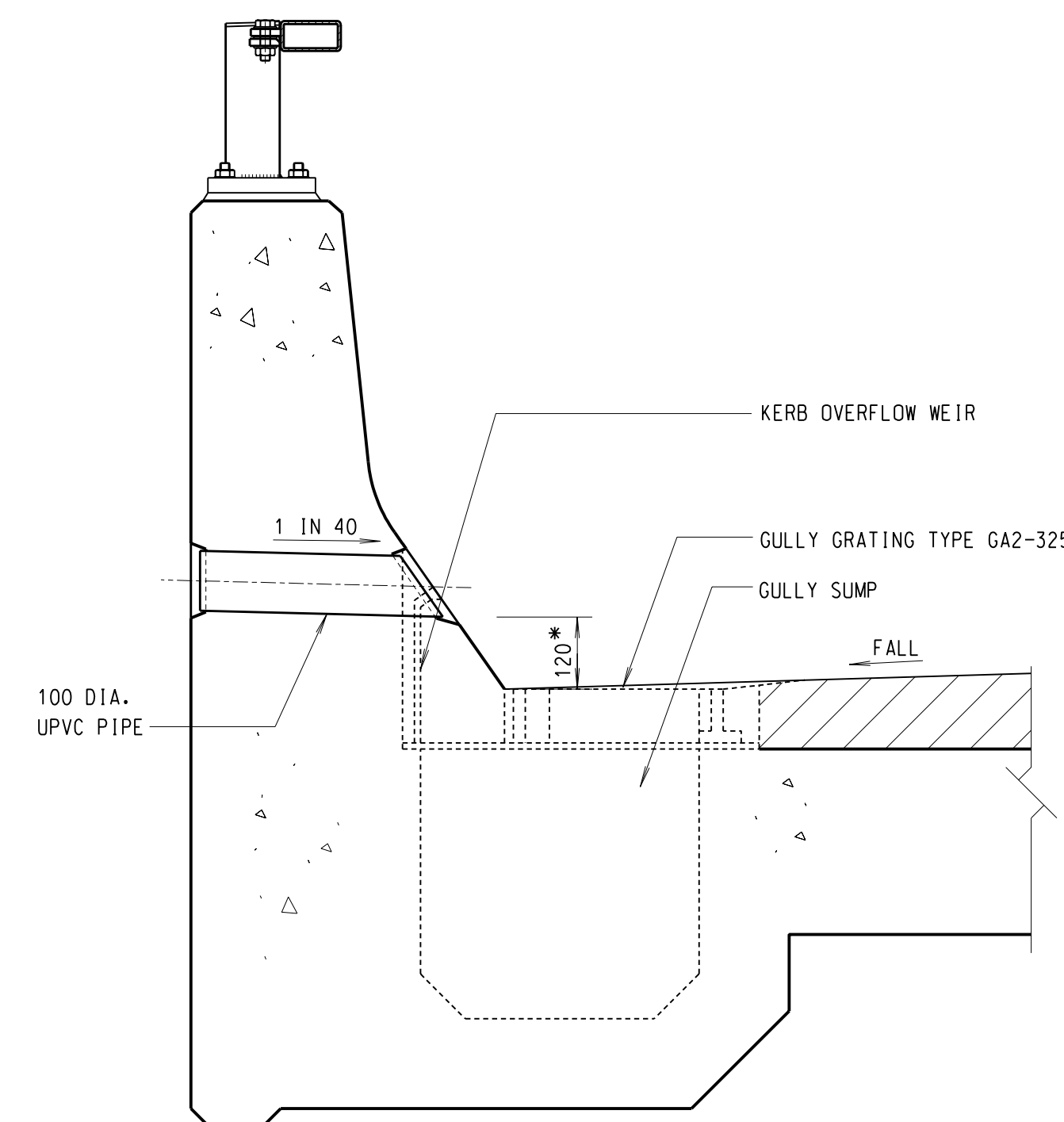
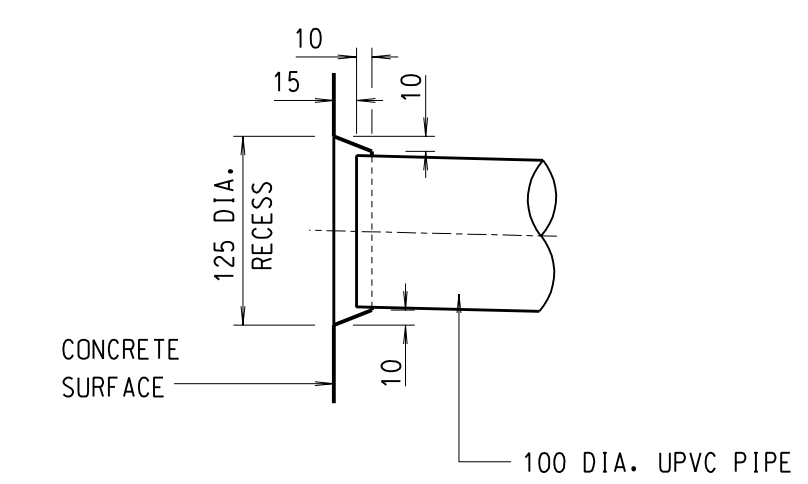


FRONT ELEVATION  
SCALE 1:10



\* TO BE INCREASED WHERE CROSS FALL EXCEEDS 3%  
DUE TO SUPERELEVATION OR ANY OTHER REASONS,  
IN ORDER TO PREVENT PRE-MATURE DISCHARGE

SECTION A-A  
SCALE 1:10



TYPICAL EMERGENCY DRAIN PIPE DETAIL  
SCALE 1:5

- NOTES:
1. ALL DIMENSIONS ARE IN MILLIMETRES.
  2. THESE OUTLETS ARE TO BE PROVIDED AT SAG ON VIADUCT PRONE TO FLOODING.
  3. THE NUMBER OF EMERGENCY DRAIN HOLES ARE INDICATIVE ONLY. IT SHALL BE DETERMINED ACCORDING TO DRAINAGE REQUIREMENTS.
  4. THIS DRAWING SUPERSEDES SSD DRAWING NOS. SSD12(1) AND SSD12(2), WITH THE LOCATIONS, SIZE AND ORIENTATION OF EMERGENCY DRAIN HOLES REVISED.

no.	date	description	initial
REVISION			
		name	signature
designed		D. S. MA	SIGNED
drawn		T. M. LEE	SIGNED
checked		P. S. CHAN	SIGNED
senior technical officer		P. S. CHAN	SIGNED
project engineer		D. S. MA	SIGNED
senior engineer		C. K. CHAN	SIGNED

approved  
 SIGNED P.C. WONG FEB 2003  
 Chief Highway Engineer date

contract no.

file no.

project no.

contract

drawing title  
 STORMWATER DRAINAGE FOR  
 HIGHWAY STRUCTURES -  
 EMERGENCY STORMWATER  
 OUTLETS THROUGH SOLID  
 PARAPETS

drawing no. SSD155  
 scale AS SHOWN

office  
 STRUCTURES DIVISION

HIGHWAYS 路  
 DEPARTMENT 政  
 HONG KONG 署