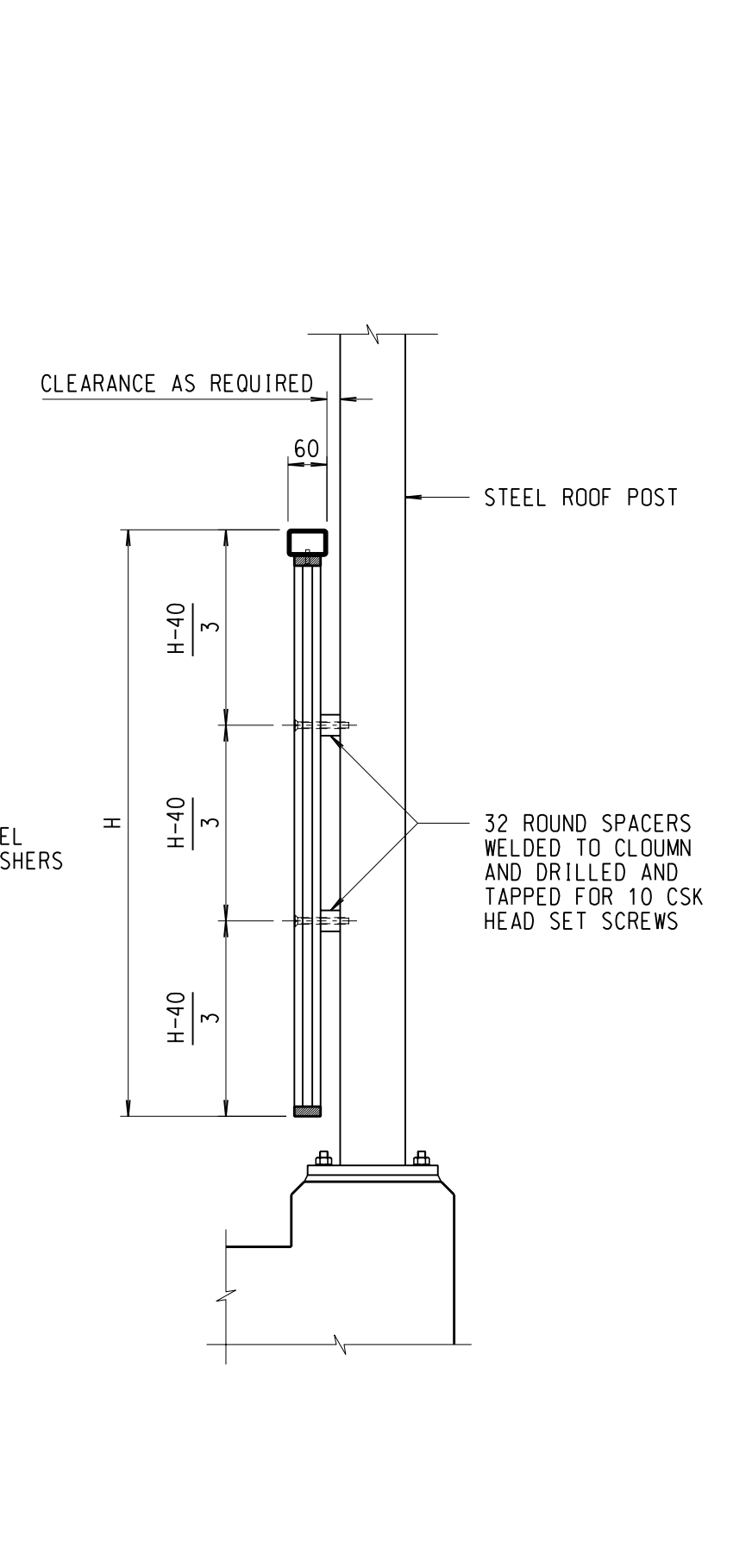
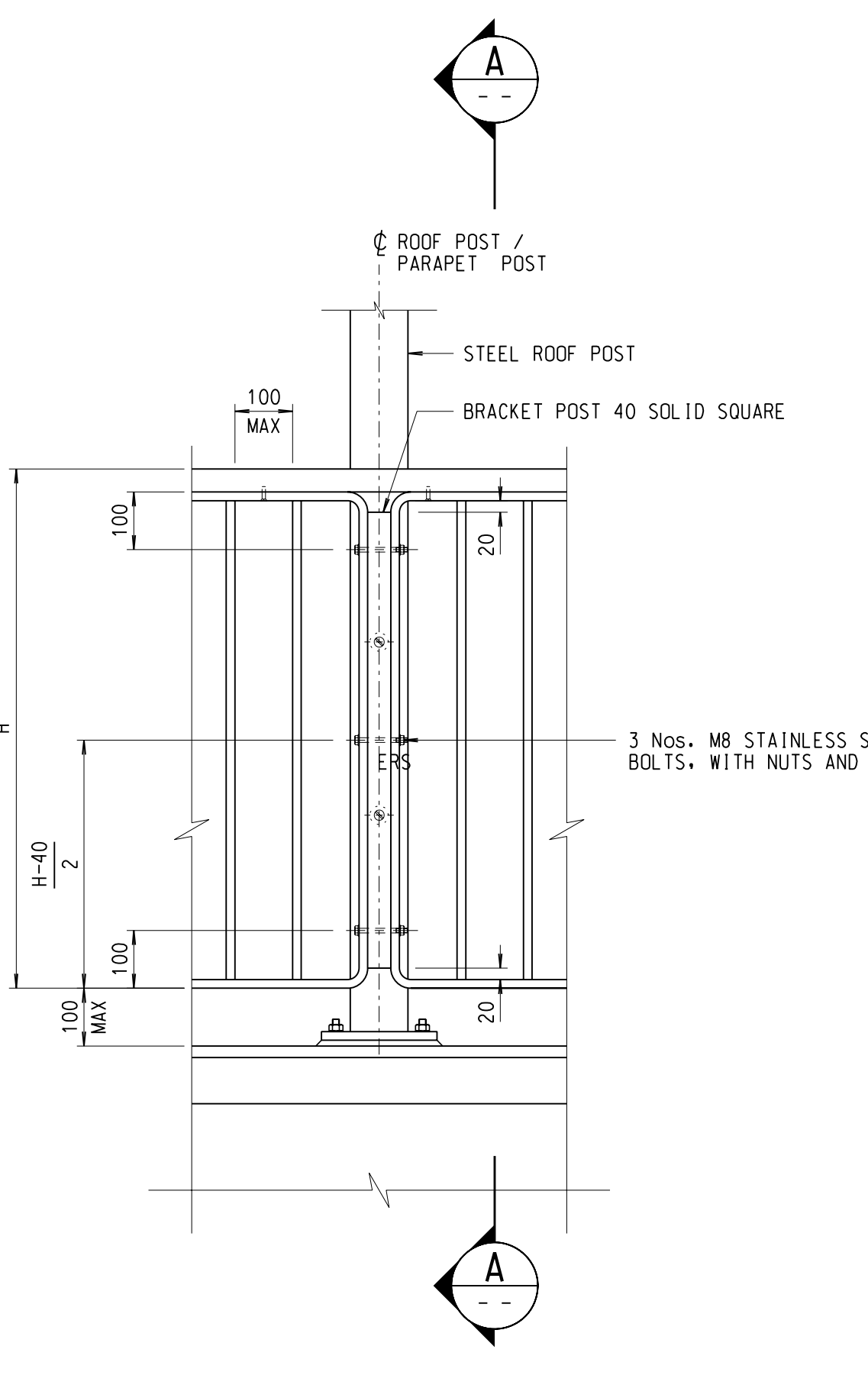
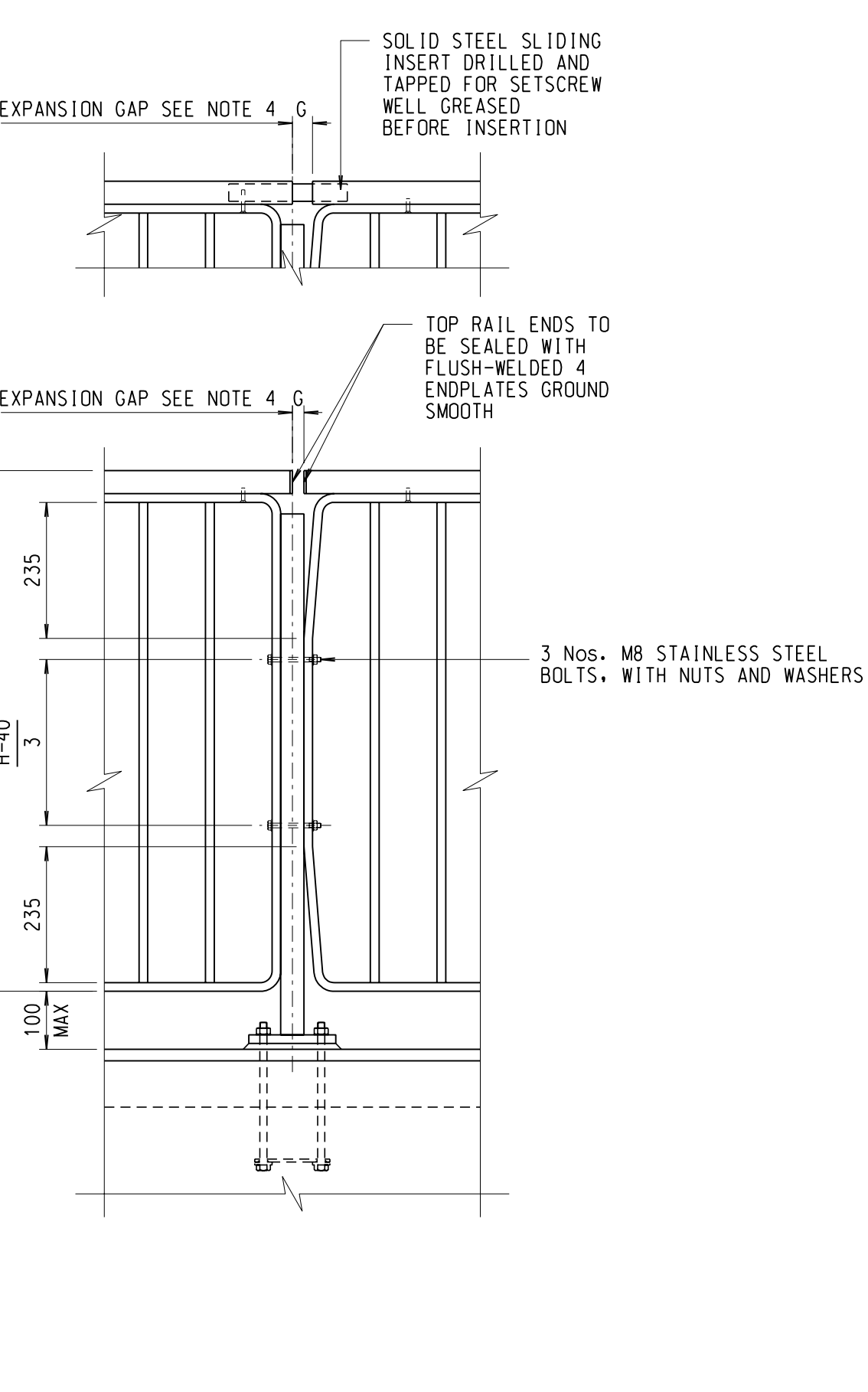
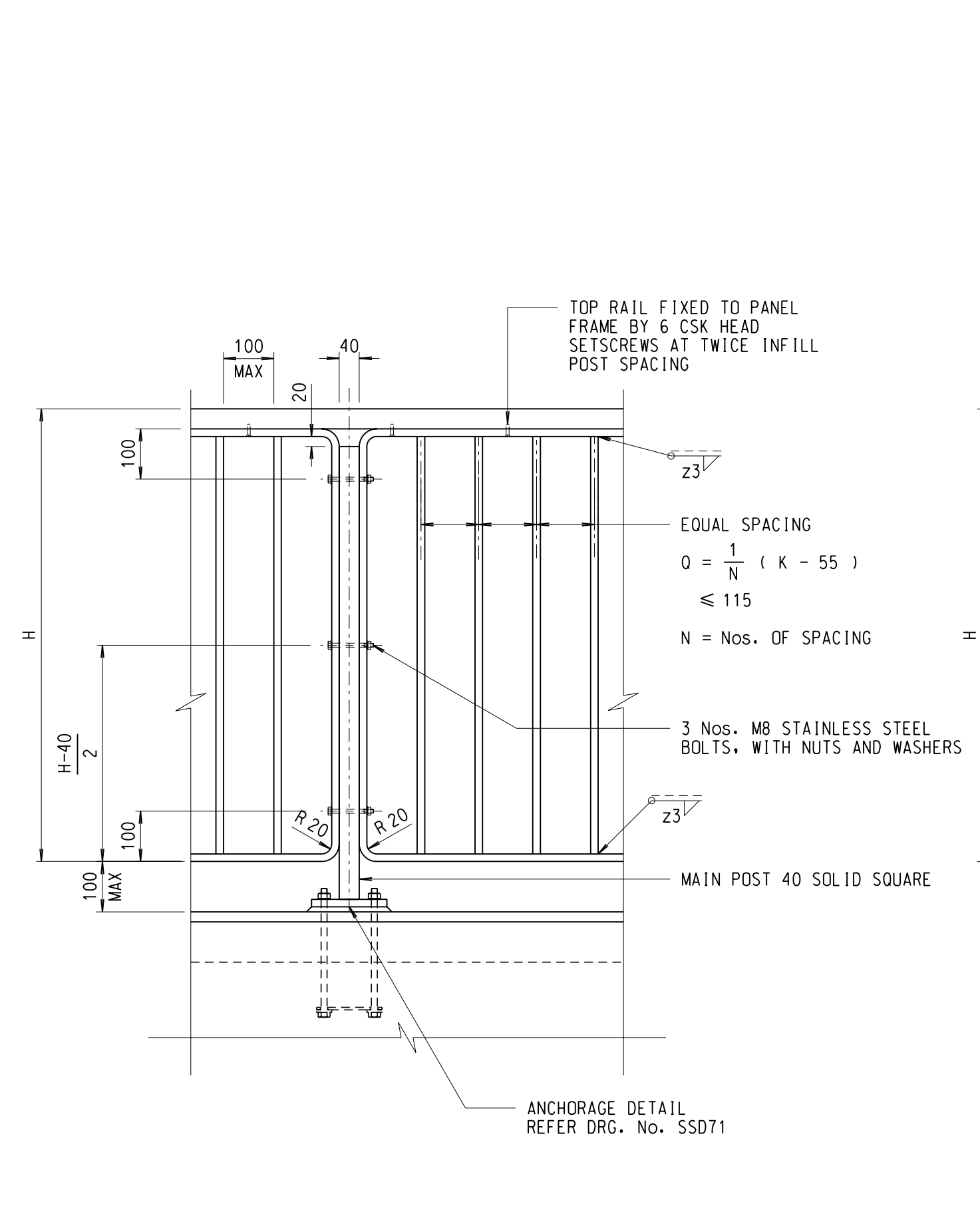
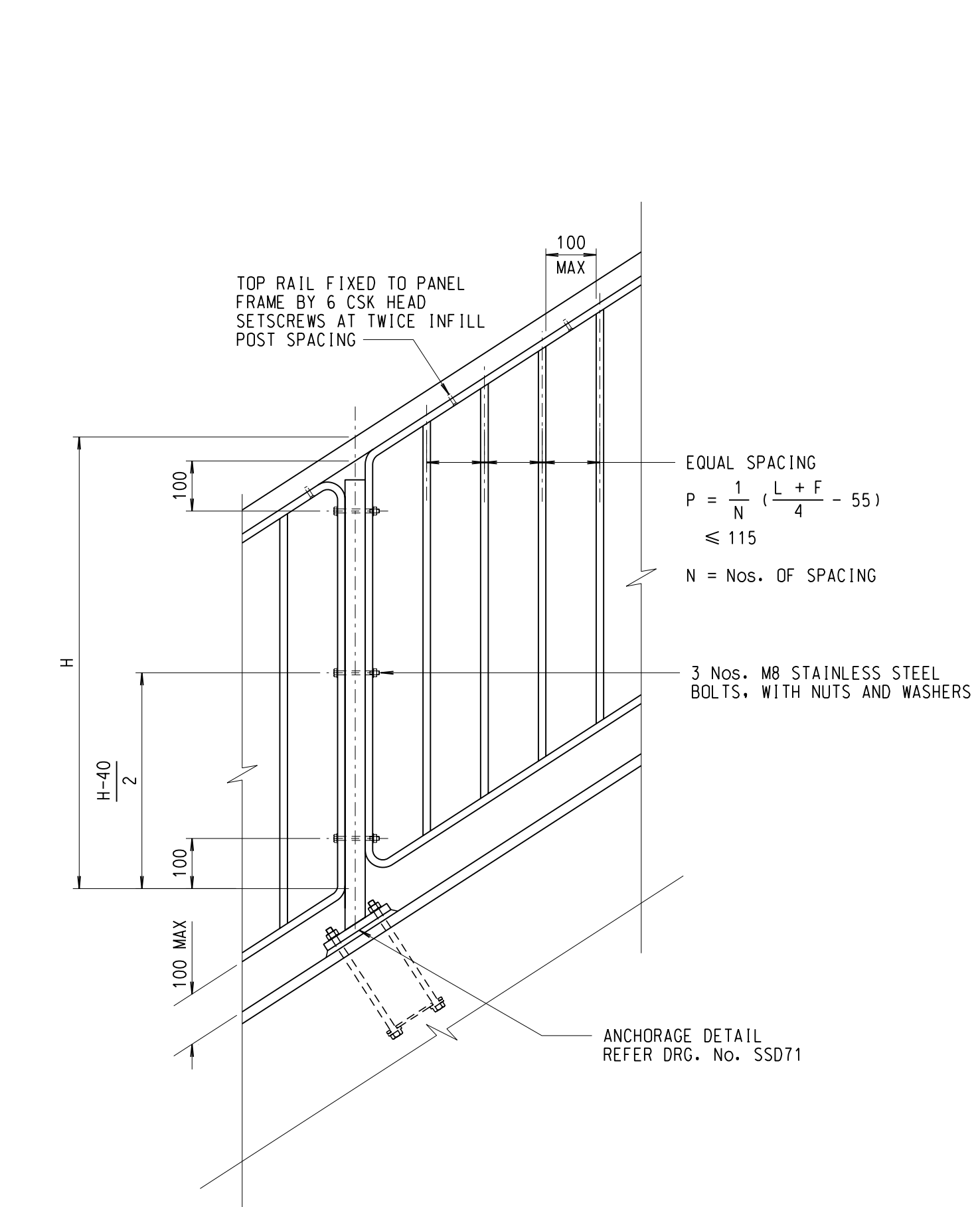
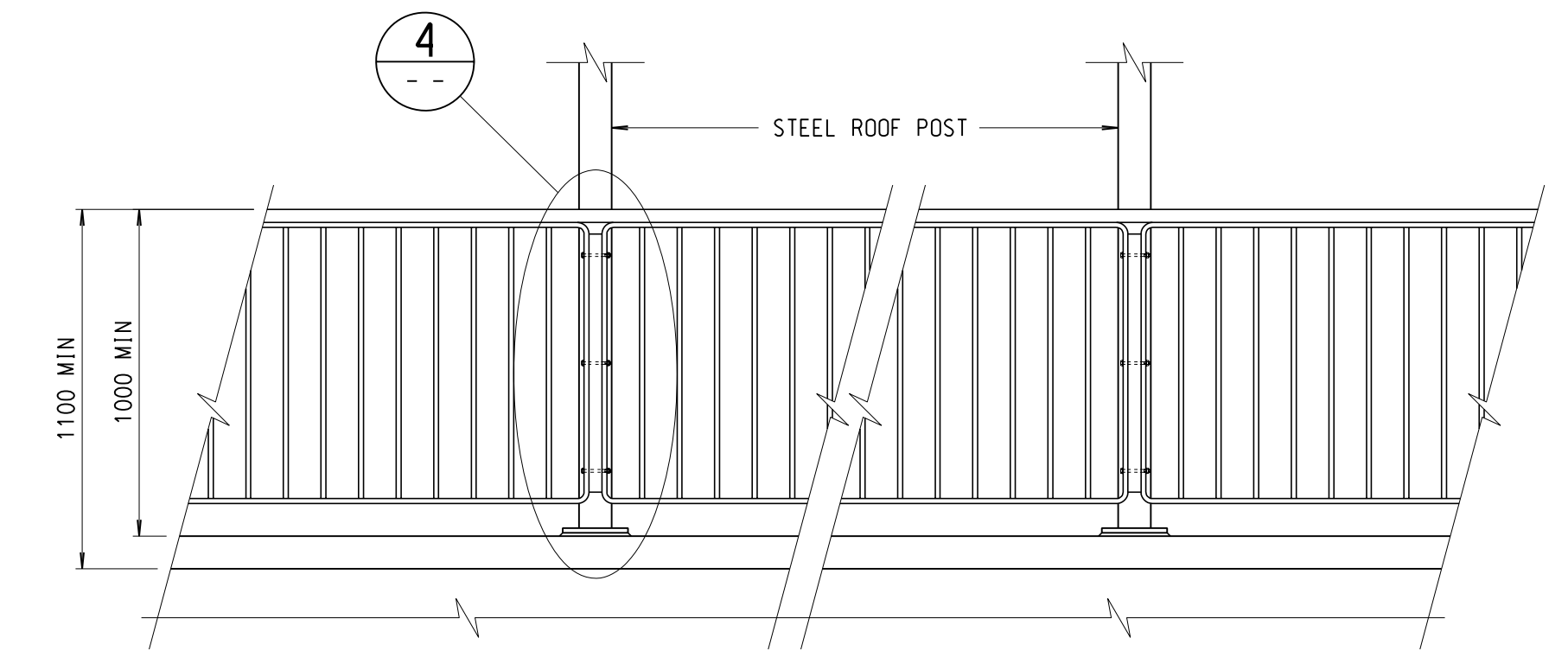
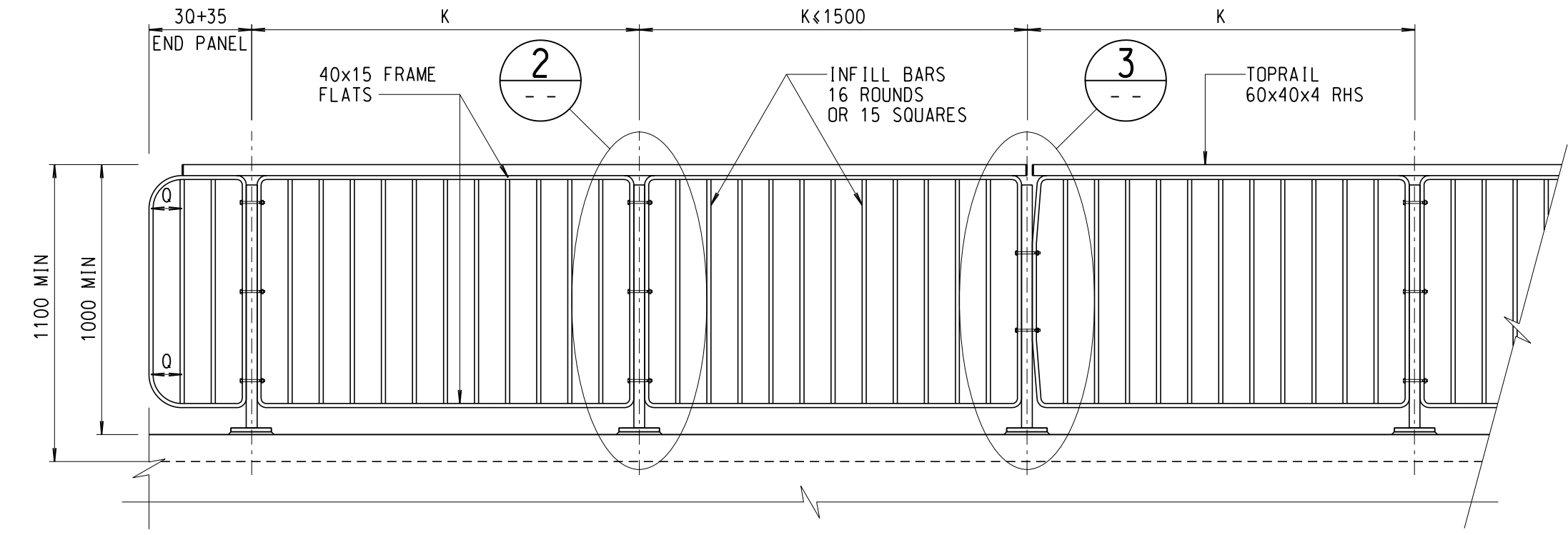
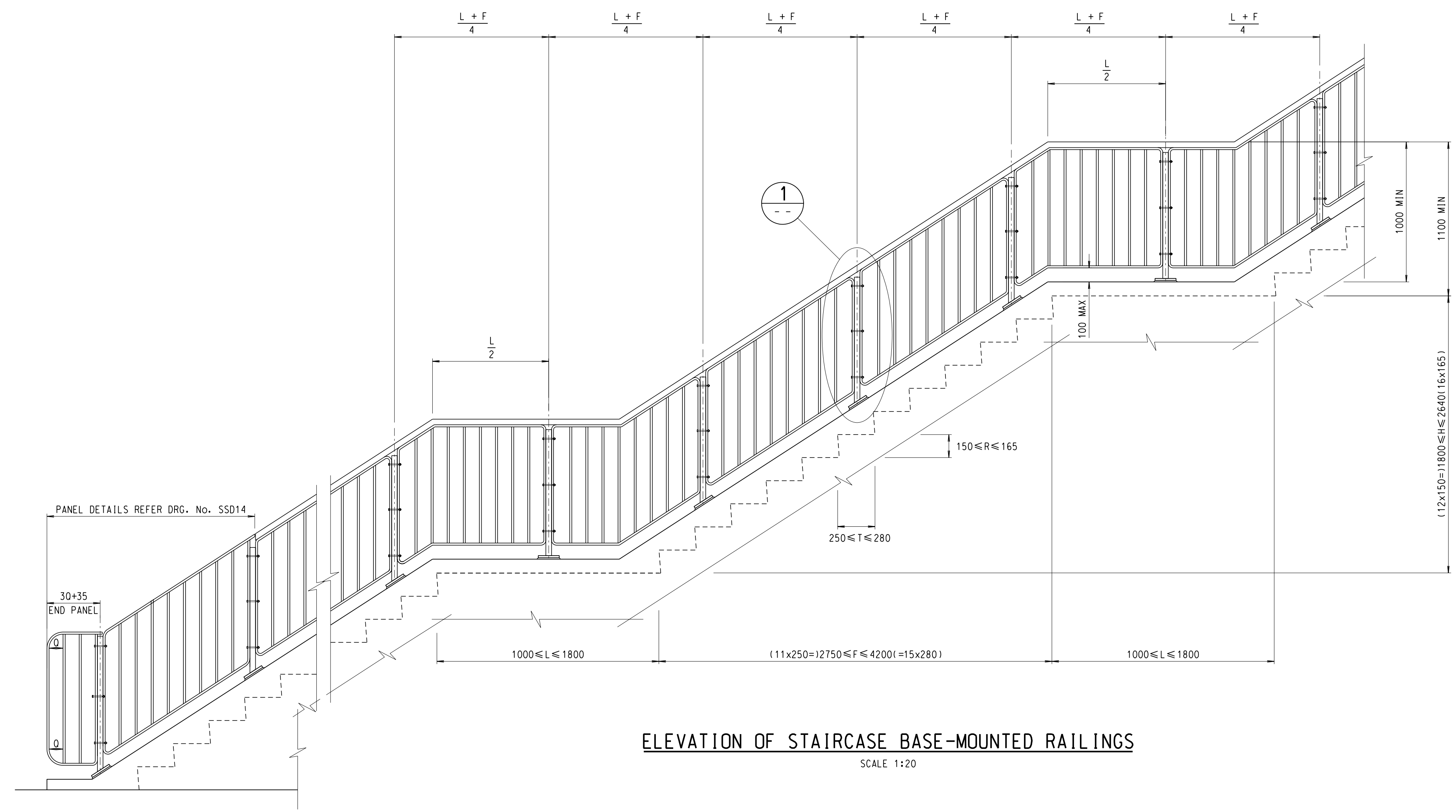


- ALL STAINLESS STEEL BOLTS, NUTS AND WASHERS SHALL BE OF GRADE A4-80 TO BS EN ISO 3506 AND COMPLYING WITH BS 3692.
- ALL STAINLESS STEEL FASTENERS SHALL BE INSULATED FROM THE GALVANISED STEELWORKS BY NYLON WASHERS OR OTHER INSULATING WASHERS APPROVED BY THE ENGINEER.

- NOTES:
- ALL DIMENSIONS ARE IN MILLIMETRES UNLESS OTHERWISE SPECIFIED.
  - STEEL IS TO BE GRADE S275JH TO BS EN 10210 FOR HOLLOW SECTIONS AND S275J0 TO BS EN 10025 FOR OTHER SECTIONS.
  - STEELWORK IS TO BE HOT-DIP GALVANISED TO BS EN ISO 1461 AFTER FABRICATION.
  - EXPANSION GAP 'G' IS TO BE APPROPRIATE FOR THE ANTICIPATED MOVEMENT.
  - WELDING IS TO BE IN ACCORDANCE WITH BS EN 1011-1 & BS EN 1011-2 AND ELECTRODES ARE TO BE IN ACCORDANCE WITH BS EN 499.
  - WELDS ARE TO BE 5mm FILLET WELDS UNLESS OTHERWISE STATED.
  - AFTER ERECTION RAILINGS ARE TO BE PAINTED WITH PAINT SYSTEM  
 PRETREATMENT : TWO-PACK ETCH PRIMER  
 PRIMER : CHLORINATED RUBBER ZINC PHOSPHATE PRIMER, 70 µm MINIMUM TOTAL DRY-FILM THICKNESS  
 UNDERCOAT : MICACEOUS IRON OXIDE CHLORINATED RUBBER UNDERCOAT, 100 µm MINIMUM TOTAL DRY-FILM THICKNESS  
 FINISH : CHLORINATED RUBBER FINISH COAT THAT IS RESISTANT TO FISH OIL AND OTHER ANIMAL AND VEGETABLE OILS, 60 µm MINIMUM TOTAL DRY-FILM THICKNESS
  - DETAILS SHOWN OF ROOF POSTS AND UNDERLYING STRUCTURE ARE ILLUSTRATIVE ONLY AND SHOULD BE CHANGED TO SUIT ACTUAL PROJECTS.
  - FURTHER BASE MOUNTING DETAILS ARE SHOWN ON DRAWING No. SSD 71.
  - EXPANSION JOINTS ARE TO BE PROVIDED TO CORRESPOND WITH MOVEMENT JOINTS IN THE UNDERLYING STRUCTURE.
  - FOR DETAILS OF RAILINGS TO BE USED AT-GRADE, REFER TO HYD STANDARD DRAWING No. H2130.
  - HANDRAILS MUST BE PROVIDED ON BOTH SIDES OF ALL RAMPS AND STAIRWAYS. DETAILS ARE SHOWN ON DRAWING No. SSD 102.



no.	date	description	initial
D	09/09	DRAWING RE-DRAWN BASE MOUNTING AND END PANEL REVISED	SIGNED M.W. CHENG, AS/P2-4 SIGNED P.T. LEUNG, SE/P2
C	07/86	NOTE TO HEIGHT OF PARAPET ADDED	SIGNED
B	05/85	SPACING OF INFILL POSTS REVISED	SIGNED
A	05/83	VALUE OF 'K' DENOTED	SIGNED

REVISION			
	name	signature	date
designed			
drawn	S.K. CHU	SIGNED	29/11/82
checked			
senior technical officer			
project engineer			
senior engineer	H. TUNG	SIGNED	2/2/82

approved  
 SIGNED  
 Chief Highway Engineer  
 3 FEB. 1982  
 date

contract no.  
 file no.  
 project no.  
 contract

drawing title  
**PEDESTRIAN PARAPET TYPE 3**

drawing no. **SSD15-D** scale **AS SHOWN**

office **BRIDGES AND STRUCTURES DIVISION** 結構橋樑部及  
**HIGHWAYS DEPARTMENT** 路政署  
 HONG KONG 香港

